

REVISIONS			
LTR	DESCRIPTION	DATE	APPROVED
A	COMPILED AND REDRAWN ON CAD PER ECN# T-15352	90 DEC 3	ZET

If this document is printed it becomes uncontrolled.
Check for the latest revision.

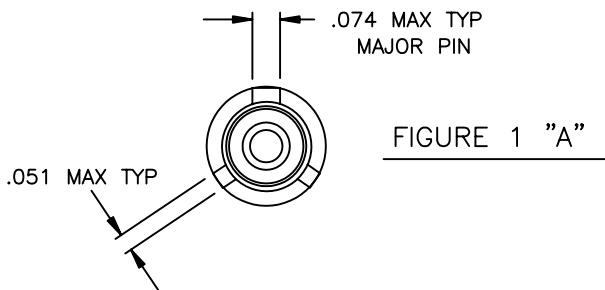


FIGURE 1 "A"

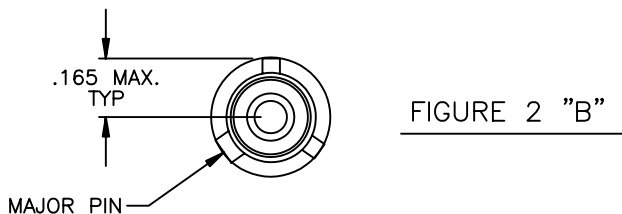


FIGURE 2 "B"

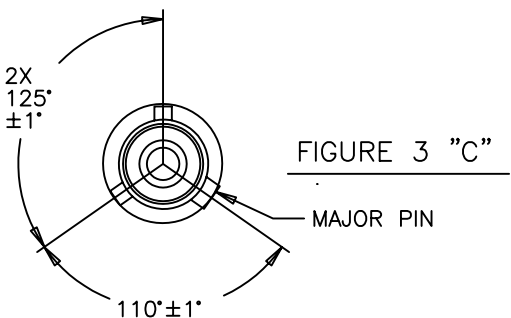


FIGURE 3 "C"

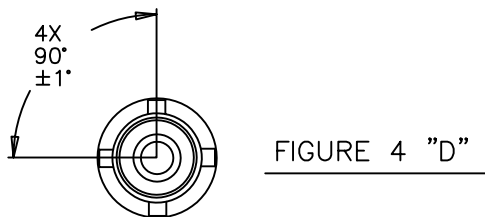
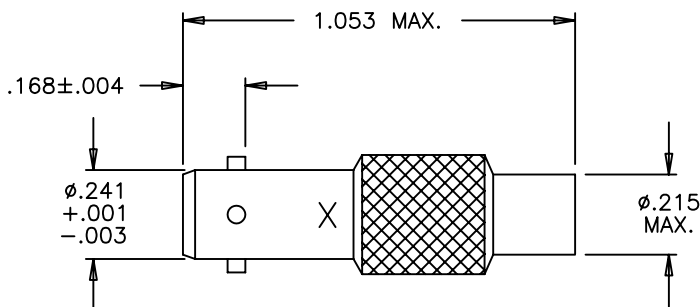


FIGURE 4 "D"

TABULATION			
CONNECTOR	PCN	INTERFACE (X)	FIGURE
D-621-0087	439411	"A"	1
D-621-0088	039292	"B"	2
D-621-0089	522718	"C"	3
D-621-0090	414348	"D"	4



SPECIFICATION CONTROL DRAWING

© Raychem Corporation 1990

UNLESS OTHERWISE SPECIFIED DIMENSIONS ARE IN INCHES. METRIC DIMENSIONS ARE IN BRACKETS. DECIMALS $.XXX \pm \text{---} [\text{---} \text{ mm}]$ $.XX \pm \text{---} [\text{---} \text{ mm}]$ ANGLES $.X \text{ ---} \pm \text{---}$ WEIGHT $\text{---} \text{ lbs} [\text{---} \text{ g}]$	DRAWN J.B.K. 90 NOV 21	 RAYCHEM CORPORATION 300 CONSTITUTION DRIVE MENLO PARK, CALIFORNIA 94025	TITLE CONNECTOR, TRIAXIAL, JACK, SUBMINIATURE, BAYONET COUPLED, INLINE
	CHECKED		
	APPROVED		
	APPROVED ZET 90 DEC 3 CAD NAME 4997-1		
THIRD ANGLE PROJECTION 	SIZE A CODE IDENT. NO. 06090 DWG. NO. D-621-0087/0090 DO NOT SCALE THIS DRAWING	REV A	
		SHEET 1 OF 2	



SEE SHEET 1 FOR REVISION

SPECIFICATIONS

1.0 MATERIALS AND FINISHES

1.1 HOUSING BODY: BeCu ALLOY, ASTM B196, TB00 OR TD04,
TIN PLATED PER MIL-T-10727,
OVER NICKEL PER MIL-C-26074

1.1.1 INSULATION (MIP): POLYETHERSULFONE

2.0 CONTACTS

CABLE TYPE	TRIAxIAL	TWINAXIAL	COAXIAL
CONTACT(S)	D-602-44 (PIN) D-602-45 (SOCKET)	D-602-0126 (PIN) D-602-0127 (SOCKET)	D-610-09 (PIN) D-610-10 (SOCKET)

3.0 SEE ES61162 FOR CABLE ACCOMODATION AND TERMINATION INFORMATION.
ALSO INCLUDED, CABLE 7724C8664 .

4.0 PERFORMANCE REQUIREMENTS

4.1 REFER TO RAYCHEM SPECIFICATION D-6025 FOR PRODUCT PERFORMANCE AND
QUAILIFICATION REQUIREMENTS.

5.0 GENERAL CHARACTERISTICS

- 5.1 OPERATING TEMPERATURE: -65°C TO 125°C
- 5.2 INSULATION RESISTANCE: GREATER THAN 5K MEG
- 5.3 DIELECTRIC STRENGTH: 900 VAC @ 60 Hz
- 5.4 CURRENT RATING: 3 AMPS MAX.
- 5.5 CONTACT RESISTANCE: INITIAL: 8 MILLIOHMS MAX.
- 5.6 MATING COUPLING TORQUE: 10 INCH/LBS MAX.

**If this document is printed it becomes uncontrolled.
Check for the latest revision.**

CAD NAME: 4997-2	DRAWN	J.B.K.	90 NOV 21	SIZE A	CODE IDENT. NO. 06090	DWG. NO. D-621-0087/0090	REV A
	ISSUED			DO NOT SCALE THIS DRAWING		SHEET 2 OF 2	

