



DESIGNED & DIMENSIONED
IN MILLIMETERS [INCHES]

TABLE 1

ITEM	COMPONENT	-H
1	HEX NUT	SMA-NUT-001-F
2	LOCK WASHER	SMA-LWAS-001-F
3	SUB ASSEMBLY	SUB-SMA-J-C-F-ST-BH1
4	PIN	SMA-SKT-001-H
5	OUTER FERRULE	SMA-FER-001-F

DO NOT
SCALE FROM
THIS PRINT

SMA-J-C-X-ST-BH1

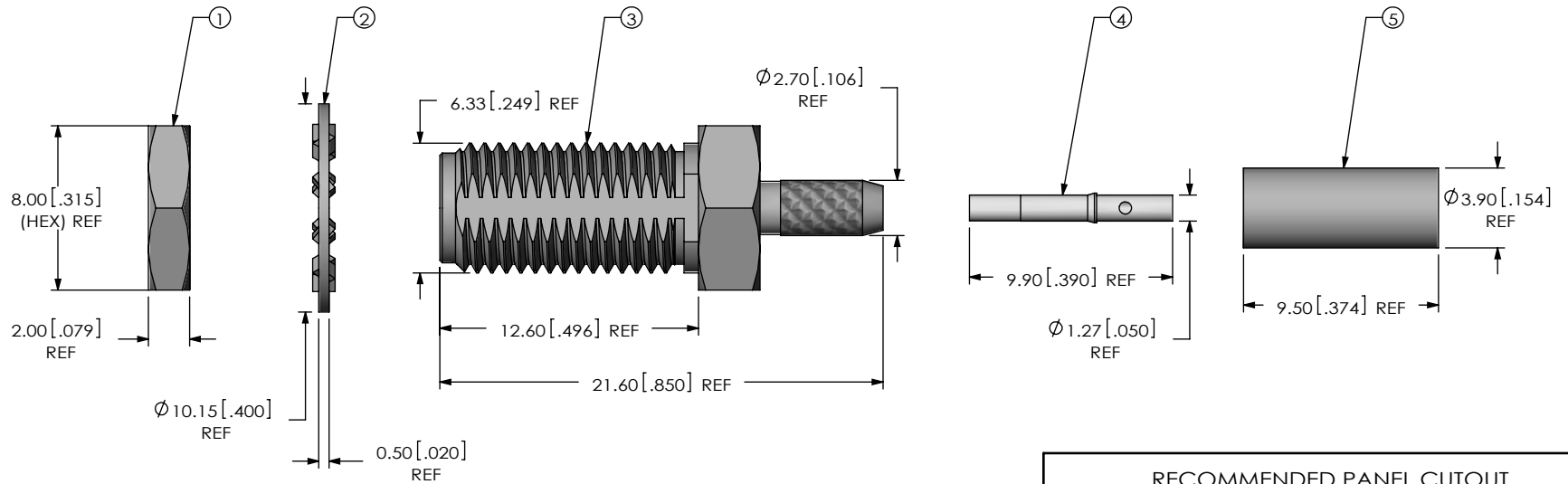
GENDER
-J: JACK

TYPE
-C: CABLE

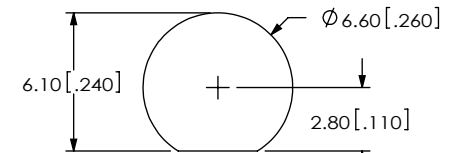
TERMINATION
-BH1: BULKHEAD 1
(RG174 OR RG316)

ORIENTATION
-ST: STRAIGHT

PLATING SPECIFICATION
-H: 30μ" GOLD CENTER CONTACT,
3μ" GOLD OUTER CONTACT
(SEE TABLE 1)



RECOMMENDED PANEL CUTOUT
3.80 [.150] MAX. PANEL THICKNESS



NOTES:

1. Ⓢ REPRESENTS A CRITICAL DIMENSION.
2. CENTER CONTACT PUSHOUT FORCE = 26.69 N [6 LB] MIN.
3. NOTE DELETED.
4. NOTE DELETED.
5. PRODUCT TO BE PACKAGED PER PACKAGING STANDARD CO-HD-WI-3040-M.
6. NOTE DELETED.
7. NOTE DELETED.
8. NOTE DELETED.

UNLESS OTHERWISE SPECIFIED,
DIMENSIONS ARE IN
MILLIMETERS [INCHES].
TOLERANCES ARE:
DECIMALS ANGLES
X.X: ±0.3 [.01] 5°
X.XX: ±0.13 [.005]
X.XXX: ±0.051 [.0020]

PROPRIETARY NOTE

THIS DOCUMENT CONTAINS INFORMATION
CONFIDENTIAL AND PROPRIETARY TO
SAMTEC, INC. AND SHALL NOT BE REPRODUCED
OR TRANSFERRED TO OTHER DOCUMENTS OR
DISCLOSED TO OTHERS OR USED FOR ANY
PURPOSE OTHER THAN THAT WHICH IT WAS
OBTAINED WITHOUT THE EXPRESSED WRITTEN
CONSENT OF SAMTEC, INC.



520 PARK EAST BLVD, NEW ALBANY, IN 47150
PHONE: 812-944-6733 FAX: 812-948-5047
e-Mail: info@SAMTEC.com code: 55322

MATERIAL: DO NOT SCALE DRAWING SHEET SCALE: 4:1

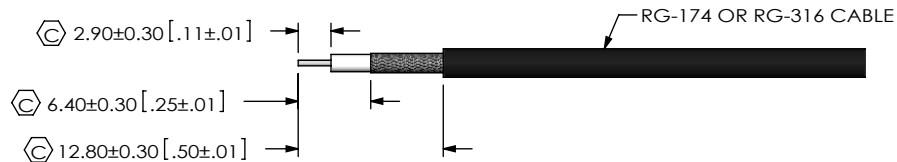
SHELL, FERRULE, NUT, WASHER: BRASS
CONTACT: COPPER ALLOY
DIELECTRIC: PTFE

DESCRIPTION:
SMA STR JACK BULKHEAD, RG174 & RG316- 50 OHM

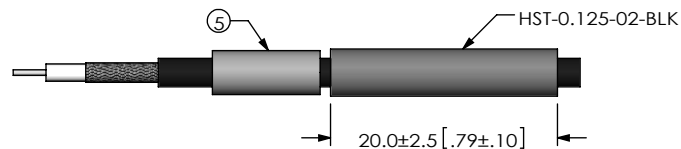
DWG. NO.
SMA-J-C-X-ST-BH1

BY: R MUSSER 01/14/2008 SHEET 1 OF 2

REVISION M



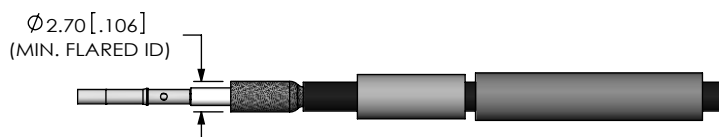
IN PROCESS 1
STRIP AND TIN INNER CONDUCTOR



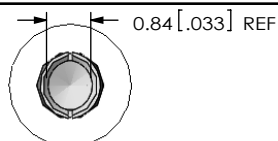
IN PROCESS 2
ADD HEAT SHRINK TUBE AND FERRULE



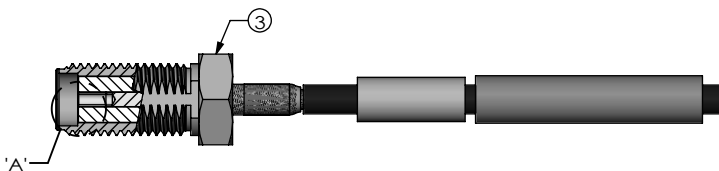
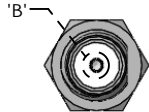
IN PROCESS 3
SOLDER SIGNAL SOCKET



IN PROCESS 4
FLARE SHIELD

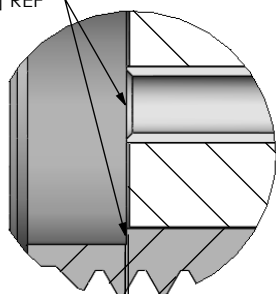


DETAIL 'B'
SCALE 7 : 1



IN PROCESS 5
ADD SUBASSEMBLY

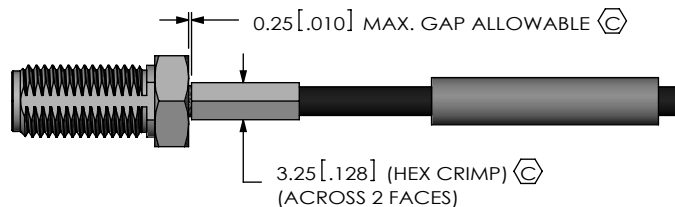
TIP OF CONTACT TO BE FLUSH WITH REFERENCE PLANE OR RECESSED 0.10 [.004] REF



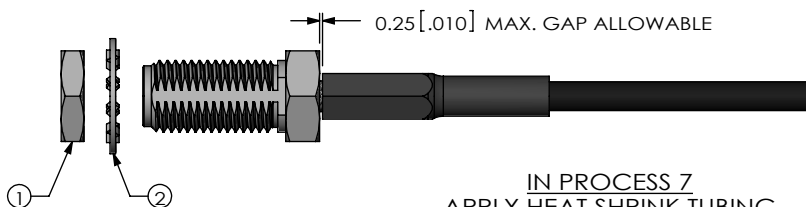
0.05 [.002] REF (TO INSULATOR)

REFERENCE PLANE

DETAIL 'A'
SCALE 8 : 1



IN PROCESS 6
CRIMP FERRULE
(USE RF CRIMP HAND TOOL # CAT-HT-126667-21 OR EQUIVALENT)



IN PROCESS 7
APPLY HEAT SHRINK TUBING

PROPRIETARY NOTE

THIS DOCUMENT CONTAINS INFORMATION CONFIDENTIAL AND PROPRIETARY TO SAMTEC, INC. AND SHALL NOT BE REPRODUCED OR TRANSFERRED TO OTHER DOCUMENTS OR DISCLOSED TO OTHERS OR USED FOR ANY PURPOSE OTHER THAN THAT WHICH IT WAS OBTAINED WITHOUT THE EXPRESSED WRITTEN CONSENT OF SAMTEC, INC.

DO NOT SCALE DRAWING

SHEET SCALE: 1.5:1



520 PARK EAST BLVD, NEW ALBANY, IN 47150
PHONE: 812-944-6733 FAX: 812-948-5047
e-Mail: info@SAMTEC.com code: 55322

DESCRIPTION:
SMA STR JACK BULKHEAD, RG174 & RG316- 50 OHM

DWG. NO.

SMA-J-C-X-ST-BH1

BY: R MUSSER 01/14/2008 SHEET 2 OF 2