

# PRODUCT DATA DRAWING

CAD GENERATED DRAWING	DCN CONTROLLED DOCUMENT	DWG. NO.  5050-0125
-----------------------------	-------------------------------	---------------------------

## ENG. FILE COPY

**MATERIAL:**

**BODY & INSERT:** BRASS PER ASTM-B-16, ALLOY UNS C36000, H02.

**CONTACT:** BERYLLIUM COPPER PER ASTM-B-196, ALLOY C17300, COND. TD04.

**INSULATOR:** TEFLON PER ASTM-D-1457.

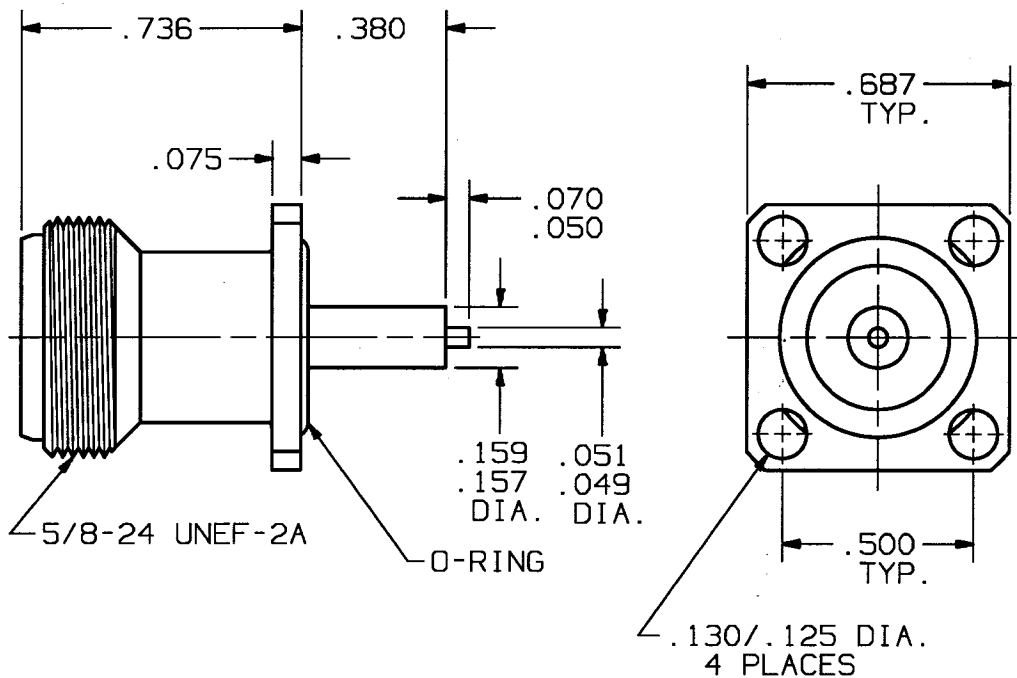
**O-RING:** SILICONE RUBBER PER ZZ-R-765, CLASS IIB, GRADE 50/60.

**FINISH:**

**BODY & INSERT:** NICKEL PER QQ-N-290, GRADE G, CLASS 1.

**CONTACT:** GOLD PER MIL-G-45204, TYPE I, GRADE C, CLASS 1; OVER NICKEL PER QQ-N-290, CLASS 1.

**IMPEDANCE:** 50 OHMS  
**FREQ. RANGE:** DC-12.4 GHz  
**D.W.V.:** 3000 VRMS  
**INSUL. RES.:** 5000 MEGOHMS MIN.



SYM.	DESCRIPTION	DATE	APPR.	UNLESS OTHERWISE SPECIFIED: 1) ALL DIMENSIONS ARE AFTER PLATING. 2) BREAK CORNERS & EDGES .005 R. MAX. 3) CHAM. 1st & LAST THDS. 4) SURFACE ROUGHNESS 63 / MIL-STD-10. 5) DIAS. ON COMMON CENTERS TO BE CONCENTRIC WITHIN .005 T.I.R. 6) REMOVE ALL BURRS.	DIMENSIONS ARE IN INCHES			Soltron Vector Microwave 3301 ELECTRONICS WAY WEST PALM BEACH, FL. 33407
					TOLERANCES:			
-	REL. DCN 23763	9/9	AA		DECIMALS	FRACTIONAL	ANGULAR	DWG. NO. 5050-0125
					.X ±.030		X° ±1°0'	
					.XX ±.015	±1/64	X°X' ±15'	
					.XXX ±.005			
				DRAWN: BRT 9/09/97	MATERIAL: SEE ABOVE			
				CHECKED: <i>AA 9/10/97</i>	FINISH: SEE ABOVE	AREA: N/A		
				APPROVED: <i>AA 9/14/97</i>	SIZE	CAGE NO.	SCALE	
					A	95077	2X	