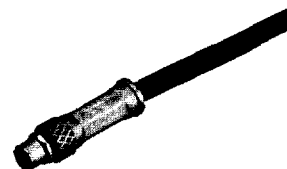
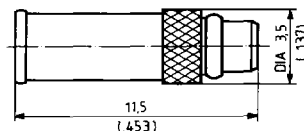


MMCX-Plugs

Cable plugs for flexible cables

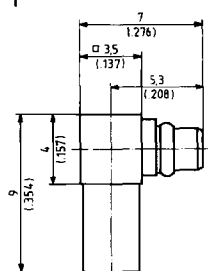
straight plugs
SUHNER full crimp



SUHNER TYPE	Ident. no.	Suitable cables	Crimp size	Weight	Assembly instruction
11 MMCX-50-1-1c	645298	RG 178 B/U RG 196 A/U	0.75 / 2.67 .030 / .105	0.5 g / .018 oz.	9169
11 MMCX-50-1-2c	645296	K 01152-7	0.75 / 2.67 .030 / .105	0.5 g / .018 oz.	9169

right angle plugs
crimp (inner conductor soldered)

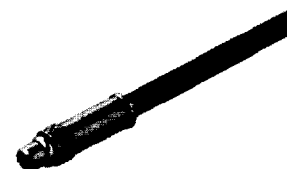
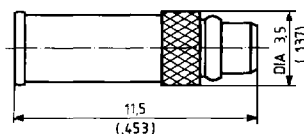
recommended tool for decoupling
and cap mounting: 76 Z-0-0-225



SUHNER TYPE	Ident. no.	Suitable cables	Crimp size	Weight	Assembly instruction
16 MMCX-50-1-1c	645955	RG 178 B/U RG 196 A/U	2.67 / .105	0.65 g / .023 oz.	9175
16 MMCX-50-1-2c	645956	K 01152-7	2.67 / .105	0.65 g / .023 oz.	9175

Cable plugs for semi-rigid cables

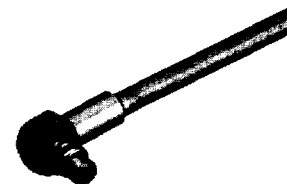
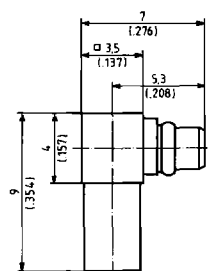
straight plugs
cable entry soldered
inner conductor crimped



SUHNER TYPE	Ident. no.	Suitable cables	Crimp size	Weight	Assembly instruction
11 MMCX-50-1-3c	648893	EZ 47	cavity 0.75 / cavity .030	0.5 g / .018 oz.	9078
11 MMCX-50-2-1c	645297	EZ 86 (RG 405/U) Sucoform 86	cavity 0.75 / cavity .030	0.5 g / .018 oz.	9170

right angle plug
cable entry and inner
conductor soldered

recommended tool for decoupling
and cap mounting: 76 Z-0-0-225



SUHNER TYPE	Ident. no.	Suitable cables	Crimp size	Weight	Assembly instruction
16 MMCX-50-1-4c	649182	EZ 47	--	0.65 g / .023 oz.	9077
16 MMCX-50-2-1c	645957	EZ 86 (RG 405/U) Sucoform 86	--	0.65 g / .023 oz.	9176