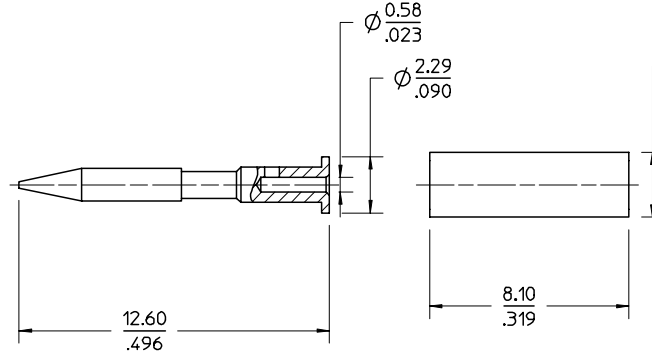
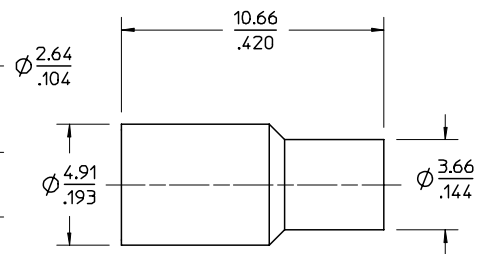


BNC ASSEMBLY



CENTER CONTACT

SLEEVE



CRIMP TUBE

FINISH:

- COUPLING NUT ----- NICKEL PLATING (70 MICROINCH MINIMUM)
- CONNECTOR BODY ----- NICKEL PLATING (70 MICROINCH MINIMUM)
- CENTER CONTACT ----- GOLD PLATING (15 MICROINCH MINIMUM)
- CRIMP TUBE ----- NICKEL PLATING (70 MICROINCH MINIMUM)

MECHANICAL & ELECTRICAL CHARACTERISTICS:

PER PRODUCT SPECIFICATION PS-73598-0015

PACKAGING FOR 73101-0164:

- 50 INDIVIDUAL UNMARKED PLASTIC BAGS EACH CONTAINING ONE CRIMP TUBE, SLEEVE, CENTER CONTACT, AND BNC ASSEMBLY
- 50 INDIVIDUAL PLASTIC BAGS SHALL BE PLACED IN ONE LARGER PLASTIC BAG.
- MARK LARGER PLASTIC BAG WITH "10-074-01LF".
- NO OTHER MARKING ON BAG ALLOWED.

PACKAGE 10 LARGER BAGS IN SHIPPING BOX.
 MARK BOX WITH "10-074-01LF"
 BOX CAN BE MARKED WITH "MOLEX"

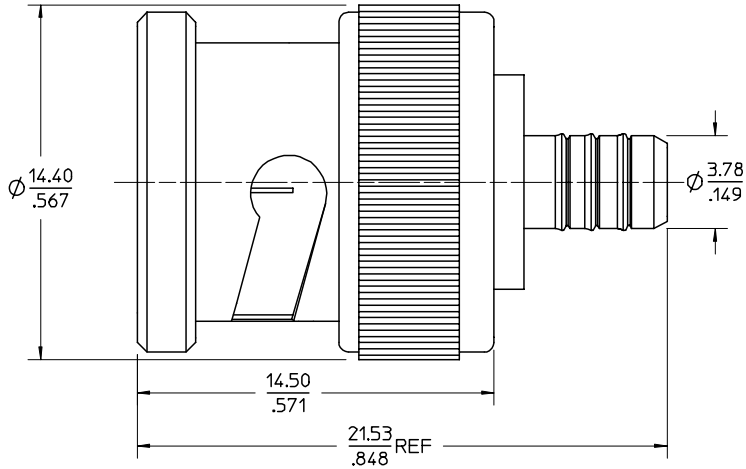
CABLE ATTACHMENT:

- INNER CONTACT ATTACHMENT & OUTER CONDUCTOR ---- CRIMP
- (USE AMP TOOL: PRO-CRIMPER II HAND TOOL ASSEMBLY #318450-1
- WITH DIE ASSEMBLY #318450-2)
- ASSEMBLY INSTUCTIONS ----- AS-89678-0100

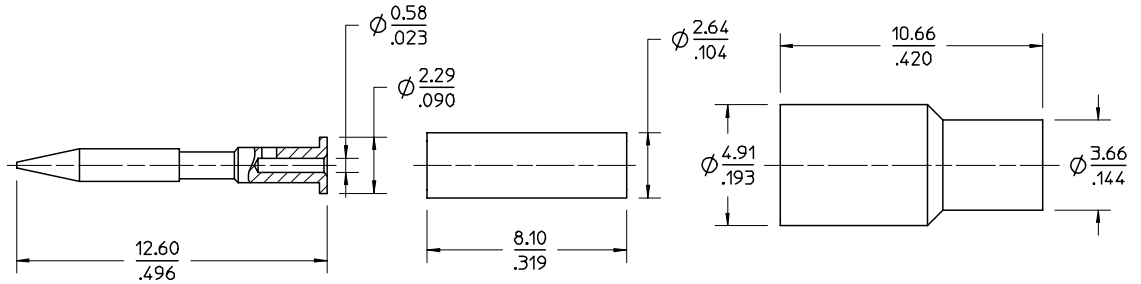
CONSTRUCTION:

- COUPLING NUT ----- ZINC ALLOY
- CONNECTOR BODY ----- BRASS
- DIELECTRIC ----- TEFLON
- CENTER CONTACT ----- BRASS
- SLEEVE ----- TEFLON
- SPRING WASHER ----- PHOSPHOR BRONZE
- WASHER ----- BRASS
- GASKET ----- SILICONE RUBBER
- CRIMP TUBE ----- COPPER ALLOY

ADD LF TO CUST PN EC NO: JRF2008-0282 DRWN: JWIENER 2007/11/26 CHKD: SSSHAH 2007/11/27 APPR: JWIENER 2007/11/27	QUALITY SYMBOLS ▽=0 ▽=0	GENERAL TOLERANCES (UNLESS SPECIFIED)		DIMENSION STYLE MM/IN		SCALE ---	DESIGN UNITS METRIC	THIRD ANGLE PROJECTION			
		4 PLACES ± --- ± .0005	3 PLACES ± --- ± .005	2 PLACES ± --- ± .01	1 PLACE ± --- ± .1	ANGULAR ± 2 °	DRAWN BY EMILY	DATE 10/09/97	TITLE BNC 750HM PLUG CABLE FOR MHR CABLE BNC-PC		
		DRAFT WHERE APPLICABLE MUST REMAIN WITHIN DIMENSIONS		APPROVED BY GMH		DATE 12/16/98	MATERIAL NO. 73101-0164		DOCUMENT NO. SD-73101-016		SHEET NO. 1 OF 3
		THIS DRAWING CONTAINS INFORMATION THAT IS PROPRIETARY TO MOLEX INCORPORATED AND SHOULD NOT BE USED WITHOUT WRITTEN PERMISSION									



BNC ASSEMBLY



CENTER CONTACT

SLEEVE

CRIMP TUBE

FINISH:

- COUPLING NUT ----- NICKEL PLATING (70 MICROINCH MINIMUM)
- CONNECTOR BODY ----- NICKEL PLATING (70 MICROINCH MINIMUM)
- CENTER CONTACT ----- GOLD PLATING (15 MICROINCH MINIMUM)
- CRIMP TUBE ----- NICKEL PLATING (70 MICROINCH MINIMUM)

MECHANICAL & ELECTRICAL CHARACTERISTICS:

PER PRODUCT SPECIFICATION PS-73598-0015

PACKAGING:

- PACKAGE 50 EACH BNC ASSEMBLIES IN ONE BAG
- PACKAGE 50 EACH CENTER CONTACTS IN ONE BAG
- PACKAGE 50 EACH SLEEVES IN ONE BAG
- PACKAGE 50 EACH CRIMP TUBES IN ONE BAG
- MARK BAG WITH *10-074-01*.
- NO OTHER MARKING ALLOWED ON BAG
- PACKAGE 20 OF EACH INDIVIDUAL BAGS IN A BOX.
- MARK BOX WITH *10-074-01*
- BOX CAN BE MARKED WITH *MOLEX*

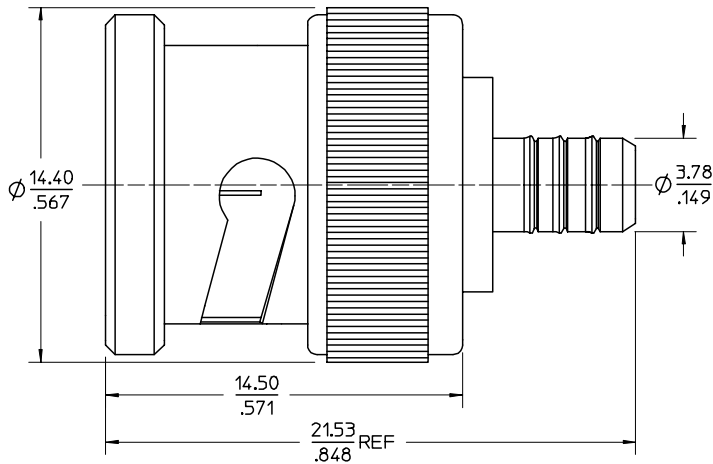
CABLE ATTACHMENT:

- INNER CONTACT ATTACHMENT & OUTER CONDUCTOR ---- CRIMP
- (USE AMP TOOL: PRO-CRIMPER II HAND TOOL ASSEMBLY #318450-1
- WITH DIE ASSEMBLY #318450-2)
- ASSEMBLY INSTRUCTIONS ----- AS-89678-0100

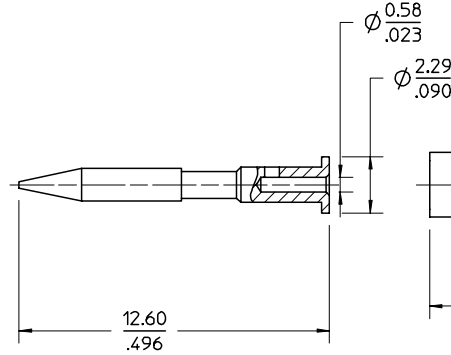
CONSTRUCTION:

- COUPLING NUT ----- ZINC ALLOY
- CONNECTOR BODY ----- BRASS
- DIELECTRIC ----- TEFLON
- CENTER CONTACT ----- BRASS
- SLEEVE ----- TEFLON
- SPRING WASHER ----- PHOSPHOR BRONZE
- WASHER ----- BRASS
- GASKET ----- SILICONE RUBBER
- CRIMP TUBE ----- COPPER ALLOY

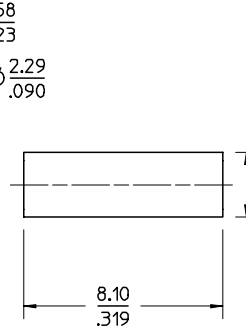
SEE SHEET ONE EC NO: URF2008-0282 DRWN: JWIENER 2007/11/26 CHKD: SSSHAH 2007/11/27 APPR: JWIENER 2007/11/27	QUALITY SYMBOLS ▽=0 ▽C=0	GENERAL TOLERANCES (UNLESS SPECIFIED)		DIMENSION STYLE MM/IN		SCALE ---	DESIGN UNITS METRIC	THIRD ANGLE PROJECTION			
		4 PLACES ± --- ± .0005	3 PLACES ± --- ± .005	2 PLACES ± --- ± .01	1 PLACE ± --- ± .1	ANGULAR ± 2 °	DRAWN BY EMILY	DATE 10/09/97	TITLE BNC 750HM PLUG CABLE FOR MHR CABLE BNC-PC		
		DRAWN BY EMILY		DATE 10/09/97		CHECKED BY DHG		DATE 12/16/98		APPROVED BY GMH	
		DATE 12/16/98		DATE 12/16/98		MATERIAL NO. 73101-0166		DOCUMENT NO. SD-73101-016		SHEET NO. 2 OF 3	
DRAFT WHERE APPLICABLE MUST REMAIN WITHIN DIMENSIONS		SIZE A3		THIS DRAWING CONTAINS INFORMATION THAT IS PROPRIETARY TO MOLEX INCORPORATED AND SHOULD NOT BE USED WITHOUT WRITTEN PERMISSION							



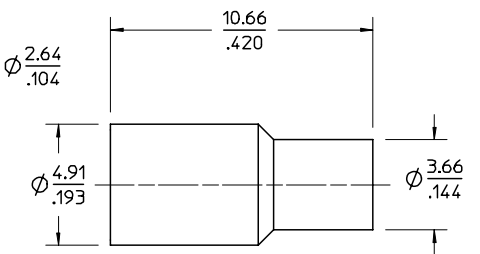
BNC ASSEMBLY



CENTER CONTACT



SLEEVE



CRIMP TUBE

FINISH:

- COUPLING NUT ----- NICKEL PLATING (70 MICROINCH MINIMUM)
- CONNECTOR BODY ----- NICKEL PLATING (70 MICROINCH MINIMUM)
- CENTER CONTACT ----- GOLD PLATING (15 MICROINCH MINIMUM)
- CRIMP TUBE ----- NICKEL PLATING (70 MICROINCH MINIMUM)

MECHANICAL & ELECTRICAL CHARACTERISTICS:

PER PRODUCT SPECIFICATION PS-73598-0015

PACKAGING:

- 200 INDIVIDUAL PLASTIC BAGS EACH CONTAINING ONE CRIMP TUBE, SLEEVE, CENTER CONTACT, AND BNC ASSEMBLY
- PACKAGE EACH CONTAINING CRIMP TUBE, SLEEVE, CENTER CONTACT, 5 PLASTIC BAGS IN SMALL BOX.
- PACKAGE EACH CONTAINING 5 PLASTIC BAGS BNC ASSEMBLY IN SMALL BOX.

PACKAGE BNC ASSEMBLY SMALL BOX AND COMPONENT SMALL BOX IN SHIPPING BOX.

BOX CAN BE MARKED WITH "MOLEX"

CABLE ATTACHMENT:

- INNER CONTACT ATTACHMENT & OUTER CONDUCTOR ---- CRIMP
- (USE AMP TOOL: PRO-CRIMPER II HAND TOOL ASSEMBLY #318450-1 WITH DIE ASSEMBLY #318450-2)
- ASSEMBLY INSTRUCTIONS ----- AS-89678-0100

CONSTRUCTION:

- COUPLING NUT ----- ZINC ALLOY
- CONNECTOR BODY ----- BRASS
- DIELECTRIC ----- TEFLON
- CENTER CONTACT ----- BRASS
- SLEEVE ----- TEFLON
- SPRING WASHER ----- PHOSPHOR BRONZE
- WASHER ----- BRASS
- GASKET ----- SILICONE RUBBER
- CRIMP TUBE ----- COPPER ALLOY

CHG: SEE SHEET ONE EC NO: URF2008-0282 DRWN: JWIENER 2007/11/26 CHKD: SSSHAH 2007/11/27 APPR: JWIENER 2007/11/27	QUALITY SYMBOLS ▽=0 ▽=0	GENERAL TOLERANCES (UNLESS SPECIFIED)		DIMENSION STYLE MM/IN		SCALE ---	DESIGN UNITS METRIC	THIRD ANGLE PROJECTION			
		4 PLACES ± --- ±.0005	3 PLACES ± --- ±.005	2 PLACES ± --- ±.01	1 PLACE ± --- ±.1	ANGULAR ± 2 °	DRAWN BY EMILY	DATE 10/09/97	TITLE BNC 750HM PLUG CABLE FOR MHR CABLE BNC-PC		
							CHECKED BY DHG	DATE 12/16/98	APPROVED BY GMH		
							DATE 12/16/98	MOLEX MOLEX INCORPORATED			
D	REV	DRAFT WHERE APPLICABLE MUST REMAIN WITHIN DIMENSIONS			SIZE A3	MATERIAL NO. 73101-0167		DOCUMENT NO. SD-73101-016	SHEET NO. 3 OF 3		