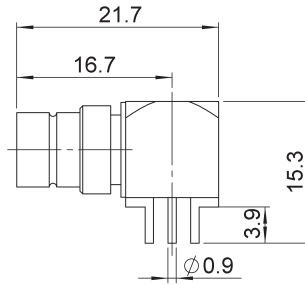
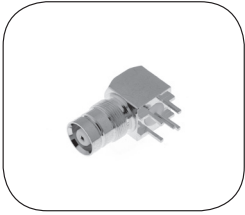


RIGHT ANGLE PCB FEMALE RECEPTACLE



Part number	Panel drilling	Note
R129A 666 000	P02	ECO version

IN SERIES ADAPTERS

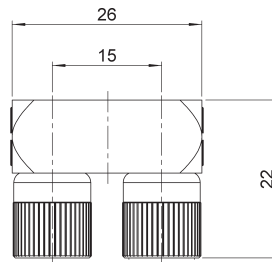
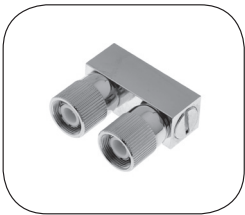


Fig. 1

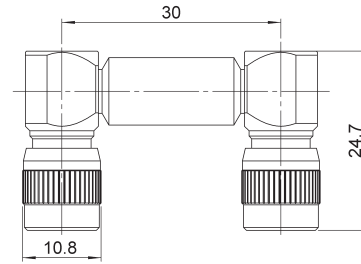
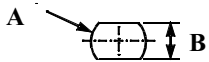


Fig. 2

Part number	Fig	Note
R129A 790 000	1	U type male - male ECO version
R129 796 215	2	U type male - male

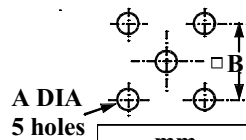
PANEL DRILLING

P01



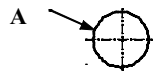
	mm	
	Maxi	mini
A	9.3	9.2
B	8.3	8.2

P02



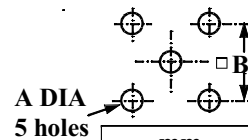
	mm	
	Maxi	mini
A	1.4	1.3
B	5.2	5.0

P03



	mm	
	Maxi	mini
A	9.3	9.2

P04



	mm	
	Maxi	mini
A	1.3	1.2
B	5.21	5.11

To download data sheets and assembly instructions, visit www.radiall.com & enter the part number in the Search box. **Bold** part numbers represent products typically in stock & available for immediate shipment. See page 8 and 9 for packaging information.