

Features

- Frequency Range: 6.0~18.0GHz
- Custom design available
- The film,high reliable
- Connectorized package available
- Operating Temperature Range: -55°C~+85°C

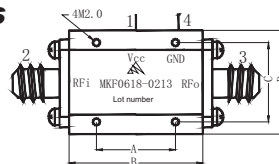
Electrical (50 Ω , T_A=-55°C~+85°C)

Parameter	MKF0618-0113		MKF0618-0213		MKF0618-0313	
	Typical	Guaranteed	Typical	Guaranteed	Typical	Guaranteed
Frequency Range f _L ~f _H (GHz)	6.0~18.0		6.0~18.0		6.0~18.0	
Gain GP (dB)	14	12	20	18	28	26
Gain Flatness ΔGP (dB)	±0.5	±2.0	±1.0	±2.0	±1.0	±2.0
Input VSWR VSWR _i	1.8	2.5 Δ	1.8	2.5 Δ	1.8	2.5 Δ
Output VSWR VSWR _o	1.8	2.5 Δ	2.0	2.5 Δ	2.0	2.5 Δ
Noise Figure NF(dB)	4.0	5.0 Δ	4.0	5.0 Δ	4.0	5.0 Δ
For 1dB Compression P-1(dBm)	14	13 Δ	14	13 Δ	14	13 Δ
DC Current Vdd/Idd(V/mA)	12/70		12/100		12/130	
Package	3C		3C		4C	

Note: “*” f=12 GHz.“ Δ ”T_A=24±1°C.

Maximum Ratings

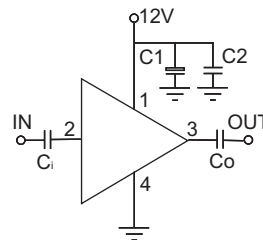
- Power supply: +14V_{DC}
- RF input: +10dBm
- Storage Temp: +125°C



mm	2C	3C	4C
A	9.0	13	16
B	17	22	27
C	13.0	13.0	13.0
D	17	17	17
H	8	8	8

Application Notes

1. Typical application shown as right, C₁=3.3~22 μF, C₂=1000~3300pF.
2. Connectorized package available.
3. See assembly section for outline and mounting information.



Typical Curves (MKF0618-0213)

