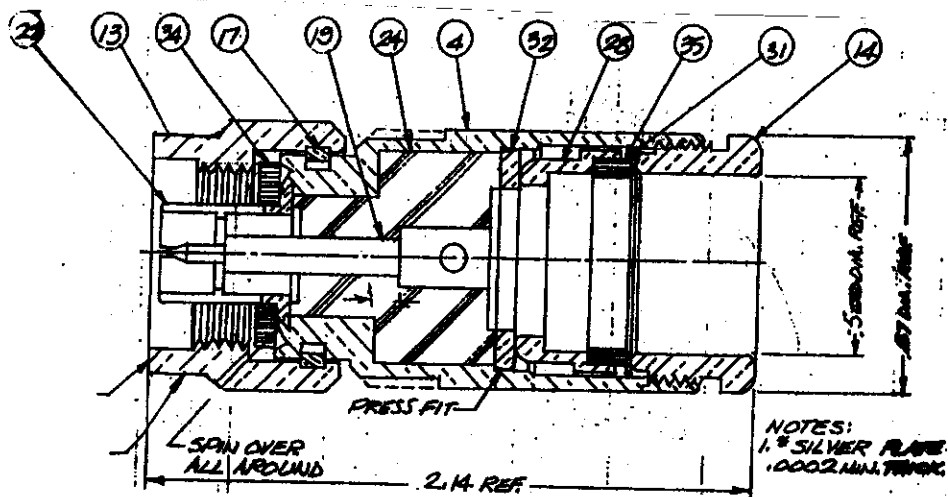


REV. STATUS SHEETS	REV. LTR.	REVISIONS			
	SHEET NO	LTR	DESCRIPTION	DATE	BY
	1	-	Released	6/06/96	JCL



**Materials & Finishes**

Center Contact: Gold Plated Brass  
 Outer Contact: Silver Plated Beryllium Copper  
 Other Metal Parts: Silver Plated Brass  
 Dielectric: Teflon  
 Gasket: Silicone Rubber

**Electrical Properties**

Impedance: 50 Ohms  
 Working Voltage: 1000 Volts (RMS max)  
 VSWR: 1.25:1 (max) up to 3 GHz  
 Insertion Loss: <0.15 dB up to 3 GHz

Unless otherwise specified dimensions in inches. Tolerances are applicable when specified.	Approvals			TIMES MICROWAVE SYSTEMS Wallingford, CT 06492		
	Drawn	JCL	6/06/96	TC-500-NMC Type N Male Clamp Connector for LMR-500		
	Check			Size	Code Ident	Dwg.No.
	PrjMg			A	68999	3190-377
	PrdMg			Scale: NA	Sheet: 1 of 1	
	QAMgr					