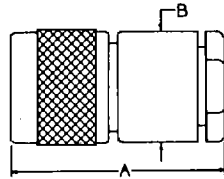


N SERIES



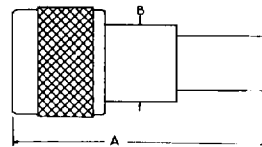
**SPECIALTY
CONNECTOR CO., INC.**

N PLUG



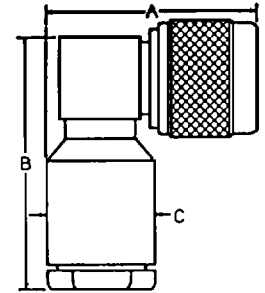
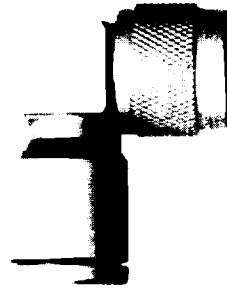
S/C Part No.	UG-U No.	Cable RG-U	Dimension		Engr. Data	Assy. Inst.
			A	B		
25P100-1	UG-21D/U	8,8A,9,9A,213,214	1-1/2	3/4		
25P104-1		1/2 dia	1-1/2	3/4	Plug-in, Semi-Rigid Cable	AI-21
25P104-2		3/8 dia	1-1/2	3/4	Plug-in, Semi-Rigid Cable	AI-21
25P106-1		8,11,213	1-1/2	3/4	Straight Cut Hardware	AI-81
25P106-2		9,13,214	1-1/2	3/4	Straight Cut Hardware	AI-81
25P107-1		58	1-3/8	1/2	Straight Cut Hardware	AI-12
25P107-2		223	1-3/8	1/2	Straight Cut Style	AI-12
25P107-4		180,195	1-3/8	1/2	Straight Cut Style	AI-12
25P107-6		303	1-3/8	1/2	Straight Cut Style	AI-12
25P107-7		59,62	1-3/8	1/2	Straight Cut Style	AI-12
25P110-1	UG-21E/U	8,9,213,214	1-1/2	3/4		
25P114-1	UG-536/U	55,58	1-3/8	1/2		
25P117-1	UG-21G/U	8,8A,9,9A,213,214	1-1/2	3/4		
25P121-1	UG-536B/U	55,58,141,142,223	1-3/8	1/2		
25P124-1		.141 S.R.	1-31/64	1/2	Plug-in Style	AI-21
25P148-1		58,223	1-3/8	1/2	Captive Contact	
25P153-1		178,196	1-3/8	1/2	Straight Cut Style	AI-55
25P153-2		174,316	1-3/8	1/2	Straight Cut Style	AI-55
25P157-1		393	1-1/2	3/4	Captive Contact	
25P173-1		Belden 8214	1-1/2	3/4	Straight Cut Style	AI-81

N PLUG — CRIMP ON



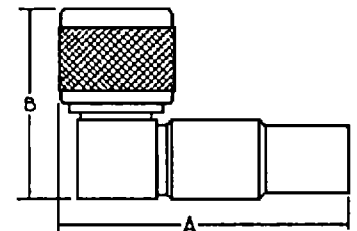
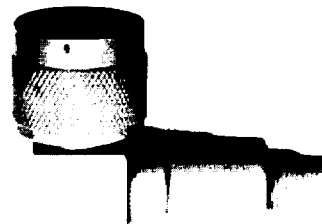
S/C Part No.	Cable RG-U	Dimension		Engr. Data
		A	B	
25P158-1	8,213	1-35/64	9/16	Crimp Captive Contact
25P158-2	9,214	1-35/64	9/16	Crimp Captive Contact
25P158-4	58	1-35/64	9/16	Crimp Captive Contact

N PLUG — RIGHT ANGLE



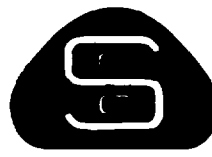
S/C Part No.	UG-U No.	Cable RG-U	Dimension			Engr. Data	Assy. Inst.
			A	B	C		
25P109-1		55,58	1-9/32	1-5/8	1/2		
25P109-2		59,62,71	1-9/32	1-5/8	1/2		
25P112-1		8,9,213,214	1-3/8	1-23/32	3/4		
25P119-1		5,21,212,222	1-5/8	1-9/16	3/4	Has Access Cap	
25P119-2		8,9,213,214	1-5/8	1-9/16	3/4	Has Access Cap	
25P127-1	UG-594B/U	8,9,213,214	1-3/8	1-19/32	3/4		AI-71
25P134-1		58	1-19/32	1-5/16	1/2	Has Access Cap	AI-19
25P135-1		500 dia S.R.	1-3/8	2-1/32	3/4	Plug-in Style	AI-21
25P135-2		.375 dia S.R.	1-3/8	2-1/32	3/4	Plug-in Style	AI-21
25P143-1		8,213	1-3/8	1-19/32	3/4	Straight Cut Style	AI-81
25P143-2		9,214	1-3/8	1-19/32	3/4	Straight Cut Style	AI-81
25P144-1		58	1-9/32	1-9/16	1/2	Straight Cut Style	AI-81
24P144-2		223	1-9/32	1-9/16	1/2	Straight Cut Style	AI-81

N PLUG — RIGHT ANGLE — CRIMP ON



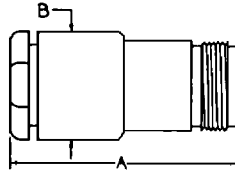
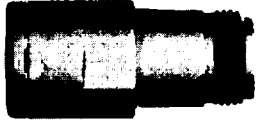
S/C Part No.	Cable RG-U	Dimension		Engr. Data
		A	B	
25P168-1	8,213	2-1/8	1-9/32	Crimp Captive Contact
25P168-2	9,214	2-1/8	1-9/32	Crimp Captive Contact
25P168-3	58	2-1/32	1-9/32	Crimp Captive Contact

N SERIES



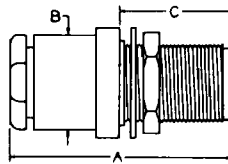
**SPECIALTY
CONNECTOR CO., INC.**

N JACK



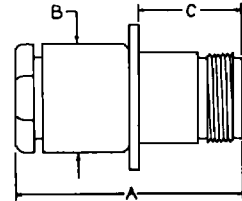
S/C Part No.	UG-/U No.	Cable RG-/U	Dimension		Engr. Data	Assy. Inst.
			A	B		
25J102-1	UG-23F/U	8,9,11,213,214	1-9/16	3/4		
25J103-1	UG-23D/U	8,9,11,13,213,214,216	1-9/16	3/4		
25J106-1		55,58	1-9/16	3/4		
25J111-1		8,11,213	1-19/32	3/4	Straight Cut Style	AI-81
25J111-2		9,13,214	1-19/32	3/4	Straight Cut Style	AI-81
25J112-1		58	1-25/64	1/2	Straight Cut Style	AI-12
25J112-2		223	1-25/64	1/2	Straight Cut Style	AI-12
25J112-5		303	1-25/64	1/2	Straight Cut Style	AI-12
25J112-6		59	1-25/64	1/2	Straight Cut Style	AI-12
25J115-1		.500 dia S.R.	2-1/32	3/4	Plug-in Style	AI-21
25J115-2		.375 dia S.R.	2-1/32	3/4	Plug-in Style	AI-21
25J122-1		58	1-25/64	1/2	Improved Hardware	

N JACK — SINGLE HOLE MOUNT



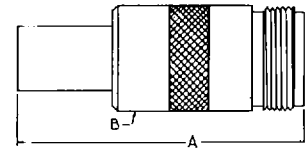
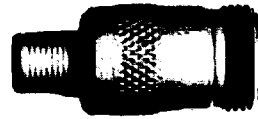
S/C Part No.	UG-/U No.	Cable RG-/U	Dimension			Mtg. Hole	Engr. Data	Assy. Inst.
			A	B	C			
25JS100-1		8,11,213	1-3/4	3/4	59/64	DD1	Straight Cut Hardware	AI-81
25JS100-2		9,13,214	1-3/4	3/4	59/64	DD1	Straight Cut Hardware	AI-81
25JS103-1		174,179A,187,188	1-41/64	1/2	59/64	DD1		
25JS104-1	UG-5568/U	55,58,141,142,223	1-41/64	1/2	59/64	DD1		AI-93
25JS105-1		188A/U	1-27/32	1/2	59/64	DD1	Herm. Seal	AI-14
25JS107-1	UG-160E/U	8,9,213,214	1-3/4	3/4	59/64	DD1		
25JS110-1	UG-160D/U	8,9,213,214	1-3/4	3/4	59/64	DD1		
25JS116-1		.375 dia S.R.	2-5/16	3/4	59/64	DD1	Plug-in Style	AI-21
25JS116-2		.500 dia S.R.	2-5/16	3/4	59/64	DD1	Plug-in Style	AI-21
25JS118-1	UG-556C/U	55,58	1-41/64	1/2	59/64	DD1		AI-93
25JS121-1		58,223	1-9/16	1/2	59/64	DD1	Captive Contact	
25JS122-1		.085 S.R.	1-41/64	1/2	59/64	DD1	Solder on Bushing	
25JS124-1		.141 S.R.	1-9/16	1/2	59/64	DD1	Plug-in Style	AI-21
25JS126-1		174,316	1-41/64	1/2	59/64	DD1	Captive Contact	
25JS130-2		174,316	1-11/16	1/2	59/64	DD1	Straight Cut Style	AI-66
25JS130-4		58	1-11/16	1/2	59/64	DD1	Straight Cut Style	AI-12
25JS130-6		303	1-11/16	1/2	59/64	DD1	Straight Cut Style	AI-12
25JS130-7		59,62	1-11/16	1/2	59/64	DD1	Straight Cut Style	AI-12

N JACK — FLANGE MOUNT



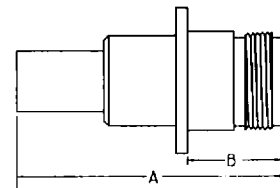
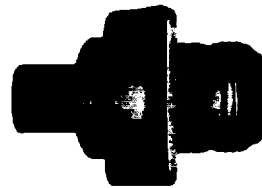
S/C Part No.	UG-/U No.	Cable RG-/U	Dimension			Mtg. Plate	Engr. Data	Assy. Inst.
			A	B	C			
25JF101-1	UG-1095B/U	55,58,141,142,223	1-25/64	1/2	21/32	1A		
25JF102-1	UG-22D/U	8,9,11,13,213,214,216	1-9/16	3/4	21/32	1A		
25JF105-1		58	1-9/16	3/4	21/32	1A	Captive Contact	
25JF108-1		58	1-25/64	1/2	21/32	1A	Straight Cut Style	AI-12
25JF108-2		223	1-25/64	1/2	21/32	1A	Straight Cut Style	AI-12
25JF110-1		250 S.R.	1-9/16	1/2	21/32	1A	Plug-in Style	AI-21
25JF110-2		141 S.R.	1-9/16	1/2	21/32	1A	Plug-in Style	AI-21
25JF111-1		8,213	1-19/32	3/4	21/32	1A	Straight Cut Style	AI-81
25JF111-1		9,214	1-19/32	3/4	21/32	1A	Straight Cut Style	AI-81
25JF112-1	UG1052/U	55,58	1-13/16	11/16	21/32	1A		

N JACK — CRIMP ON



S/C Part No.	Cable RG-/U	Dimension		Engr. Data
		A	B	
25J123-1	8,213	1-5/8	5/8	Crimp Captive Contact
25J123-2	9,214	1-5/8	5/8	Crimp Captive Contact

N JACK — FLANGE MOUNT — CRIMP ON



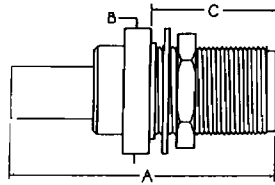
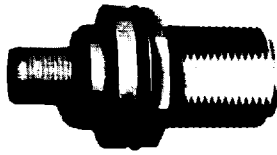
S/C Part No.	Cable RG-/U	Dimension		Mtg. Plate	Engr. Data
		A	B		
25JF113-1	9,214	1-5/8	21/32	1A	Crimp Captive Contact
25JF113-2	8,213	1-5/8	21/32	1A	Crimp Captive Contact

N SERIES



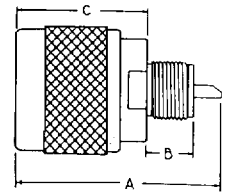
**SPECIALTY
CONNECTOR CO., INC.**

N JACK — SINGLE HOLE MOUNT — CRIMP ON



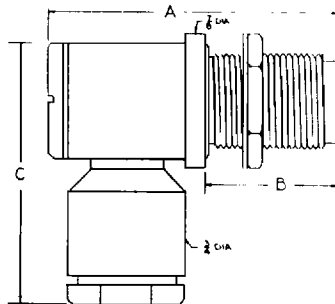
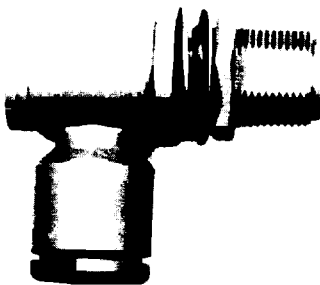
S/C Part No.	Cable RG-U	Dimension			Mtg. Hole	Engr. Data
		A	B	C		
25JS134-1	8,213	1-53/64	7/8	59/64	DD1	Crimp Captive Contact
25JS134-2	9,214	1-53/64	7/8	59/64	DD1	Crimp Captive Contact

N PLUG RECEPTACLE — SCREW MOUNT



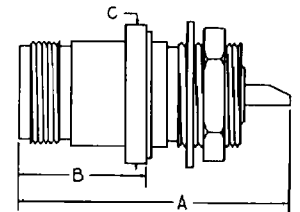
S/C Part No.	Dimension			Engr. Data
	A	B	C	
25PR113-1	1-5/16	19/64	7/8	Screws into 3/8-32 Tapped Hole

N JACK — SINGLE HOLE MOUNT — RIGHT ANGLE



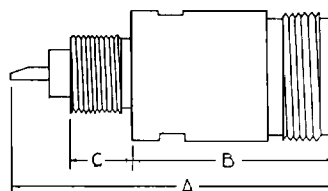
S/C Part No.	Cable RG-U	Dimension			Mtg. Hole	Engr. Data	Assy. Inst.
		A	B	C			
25JS127-2	8,9,213, 214	1-9/16	55/64	1-21/32	DD1		AI-47

N JACK RECEPTACLE — SINGLE HOLE MOUNT



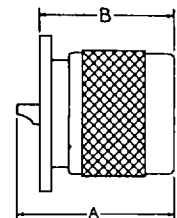
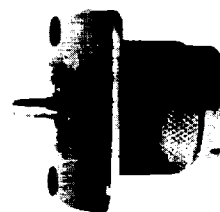
S/C Part No.	UG-U No.	Dimension			Mtg. Hole	Engr. Data
		A	B	C		
25JR129-1	UG-680A/U	1-7/16	45/64	13/16	DD1	Herm. Sealed

N JACK RECEPTACLE — SCREW MOUNT



S/C Part No.	Dimension			Engr. Data
	A	B	C	
25JR140-1	1-25/64	61/64	19/64	Screws into 3/8-32 Tapped Hole
25JR161-1	1-13/64	5/8	19/64	Screws into 3/8-32 Tapped Hole

N PLUG RECEPTACLE — FLANGE MOUNT



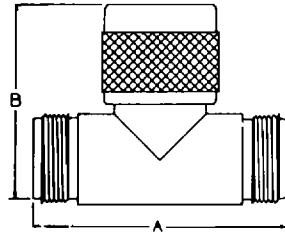
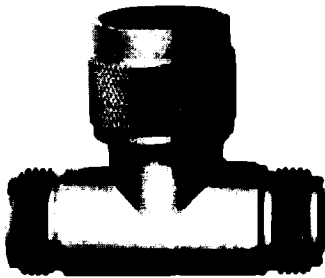
S/C Part No.	UG-U No.	Dimension		Mtg. Plate	Engr. Data
		A	B		
25PR102-2		1-1/64	7/8	1A	

N SERIES



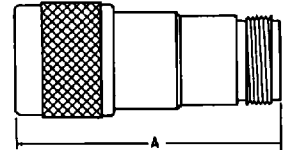
**SPECIALTY
CONNECTOR CO., INC.**

N ADAPTER TEE



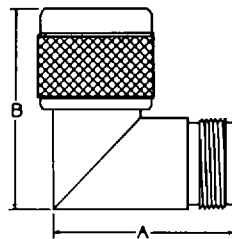
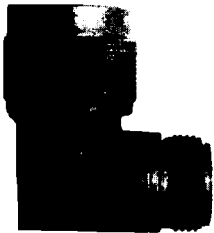
S/C Part No.	UG-/U No.	Adapter Ends	Dimension		Engr. Data
			A	B	
25AT101-1	UG-107B/U	Jack-Plug-Jack	1-3/4	1-29/64	

N ADAPTER



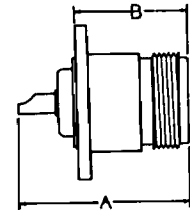
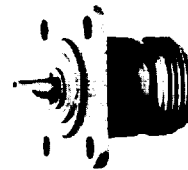
S/C Part No.	Adapter Ends	Dimension	Engr. Data
		A	
25A102-1	Plug-Jack	1-11/16	50 Ohm Plug - 75 Ohm Jack

N ADAPTER — RIGHT ANGLE



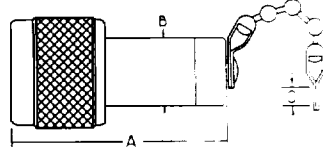
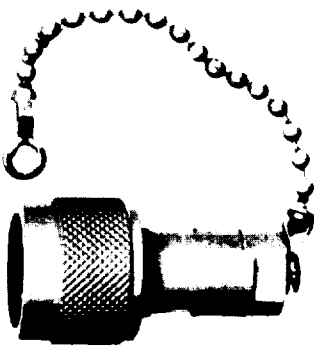
S/C Part No.	UG-/U No.	Adapter Ends	Dimension		Engr. Data
			A	B	
25AR101-1	UG-27B/U	Plug-Jack	1-3/16	1-3/8	Mitre Style
25AR102-1	UG-27D/U	Plug-Jack	1-17/64	1-9/32	Cube Style
25AR102-2	UG-27C/U	Plug-Jack	1-17/64	1-9/32	Cube Style

N JACK RECEPTACLE — FLANGE MOUNT



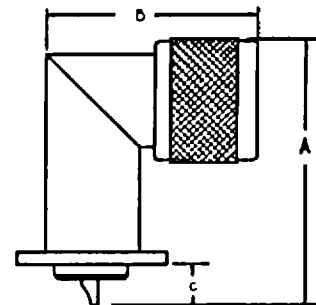
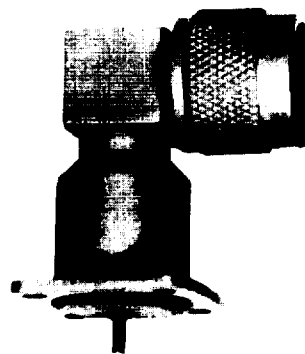
S/C Part No.	UG-/U No.	Dimension		Mtg. Plate	Engr. Data
		A	B		
25JR109-1	UG-58A/U	1-1/8	47/64	1A	

N PLUG TERMINATION



S/C Part No.	Resistor		Dimension			Engr. Data
	Ohm	Watt	A	B	C	
25PO100-1	51	1/2	1-1/2	1/2	.144	3-1/2" Bead Chain
25PO105-1	51	1/2	1-1/2	1/2		No Chain

N PLUG RECEPTACLE — RIGHT ANGLE — FLANGE MOUNT



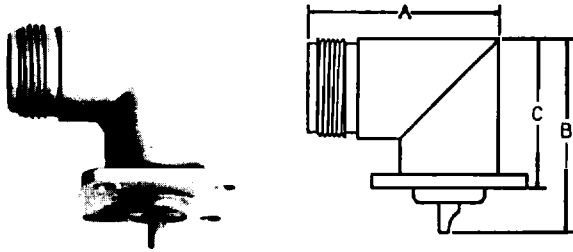
S/C Part No.	Dimension			Mtg. Plate	Engr. Data
	A	B	C		
25PR122-1	1-35/64	1-21/64	5/16	1A	

N SERIES



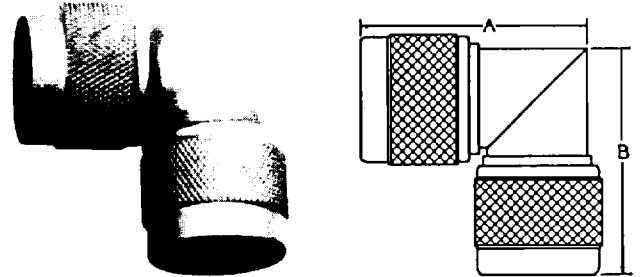
**SPECIALTY
CONNECTOR CO., INC.**

N JACK RECEPTACLE — RIGHT ANGLE — FLANGE MOUNT



S/C Part No.	UG-U No.	Dimension			Mtg. Plate	Engr. Data
		A	B	C		
25JR117-1	UG-997A/U	1-7/32	1-29/64	1-9/64	1A	

N ADAPTER — RIGHT ANGLE



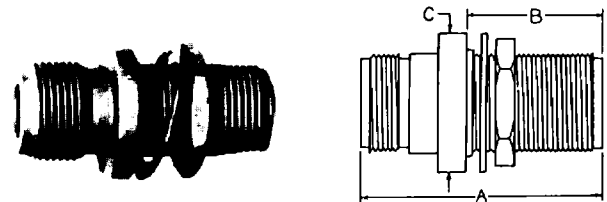
S/C Part No.	UG-U No.	Adapter Ends	Dimension		Engr. Data
			A	B	
25AR100-1		Plug-Plug	1-3/8	1-3/8	

N ADAPTER



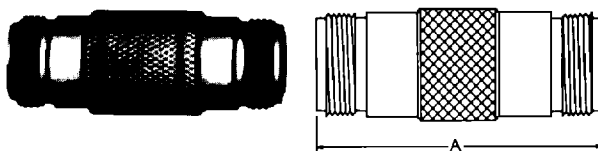
S/C Part No.	UG-U No.	Adapter Ends	Dimension	Engr. Data
			A	
25A100-1	UG-57B/U	Plug-Plug	1-19/32	Precision
25A107-2		Plug-Plug	1-19/32	

N ADAPTER — SINGLE HOLE MOUNT



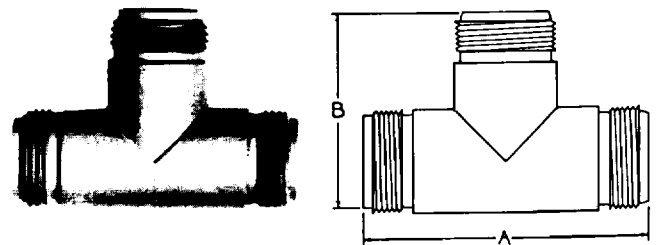
S/C Part No.	UG-U No.	Adapter Ends	Dimension			Mtg. Hole	Engr. Data
			A	B	C		
25AS100-1	UG-30D/U	Jack-Jack	1-35/64	55/64	7/8	DD1	Herm. Seal
25AS102-1	UG-30E/U	Jack-Jack	1-35/64	55/64	7/8	DD1	Herm. Seal

N ADAPTER



S/C Part No.	UG-U No.	Adapter Ends	Dimension	Engr. Data
			A	
25A101-1	UG-29B/U	Jack-Jack	1-3/4	Precision
25A108-2		Jack-Jack	1-7/8	

N ADAPTER TEE



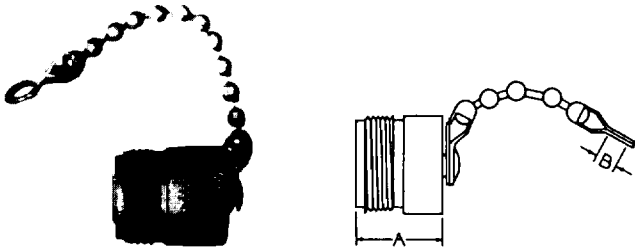
S/C Part No.	UG-U No.	Adapter Ends	Dimension		Engr. Data
			A	B	
25AT100-1	UG-28A/U	Jack-Jack-Jack	1-3/4	1-7/32	

N SERIES



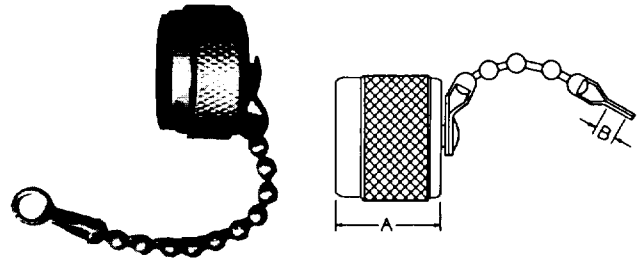
**SPECIALTY
CONNECTOR CO., INC.**

N JACK CAP & CHAIN



S/C Part No.	UG-U No.	Dimension		Engr. Data
		A	B	
25JC100-1		11:16	.144	2-1/2" Bead Chain
25JC103-1		11:16		Shorting Cap - No Chain

N PLUG CAP



S/C Part No.	UG-U No.	Dimension		Engr. Data
		A	B	
25PC100-1	MX-913-U	7:16	.144	2-1/2" Bead Chain
25PC101-2		7:16		No Chain
25PC103-1		47:64		Shorting Cap - No Chain