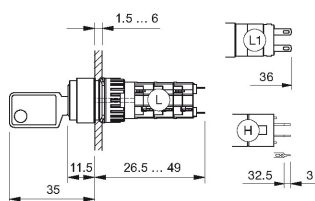


EAO – Your Expert Partner for Human Machine Interfaces

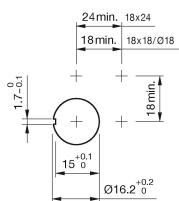
51-498.025D2 - Keylock switch 2 positions

Dimensions

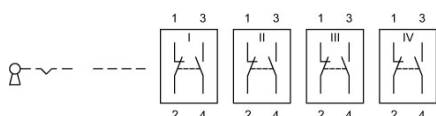


H = Universal terminal 2.0 x 0.5 mm

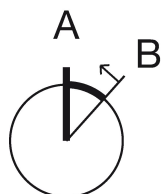
Mounting cut-outs



Wiring diagram



Switching positions



Additional information

Standard lock: DOM 311

Two keys are supplied with each key lock switch

Optional lock numbers on request

Legend

Contacts: NC = Normally closed, NO = Normally open

Switching action: A = Rest, B = Momentary