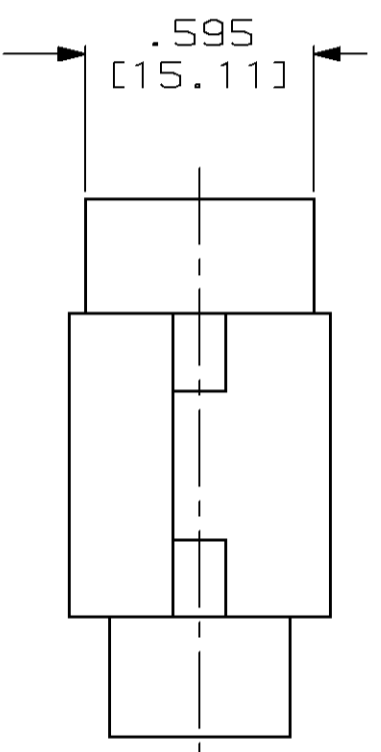
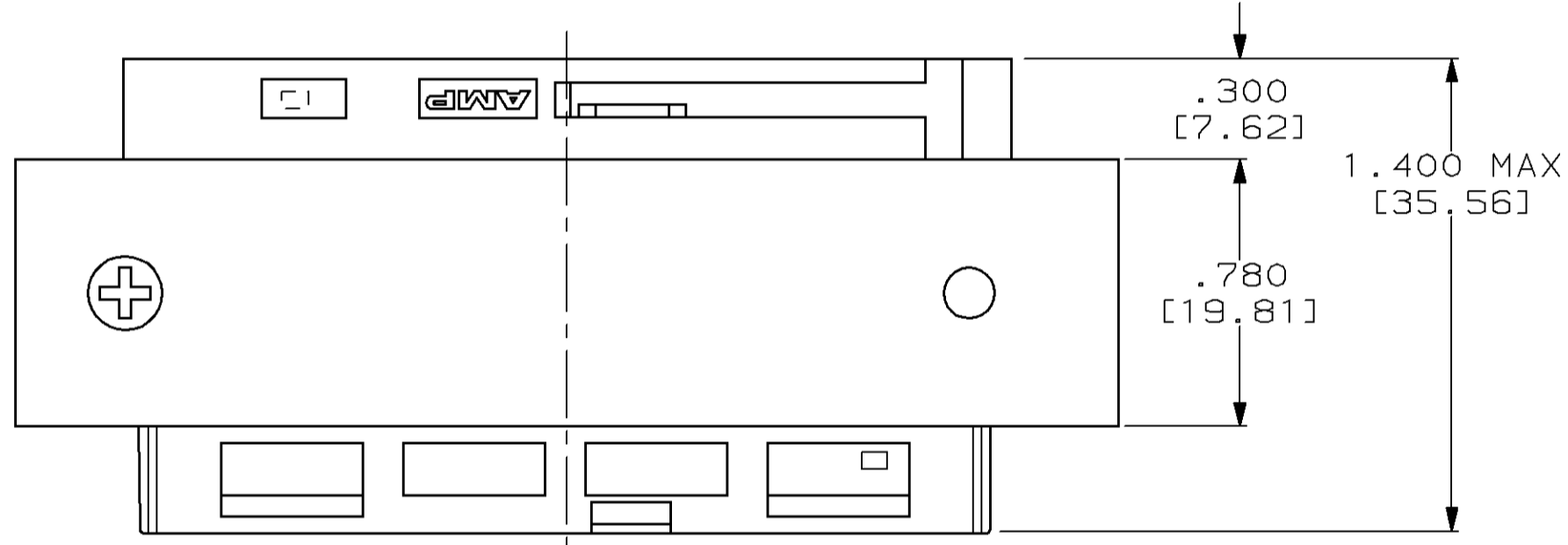
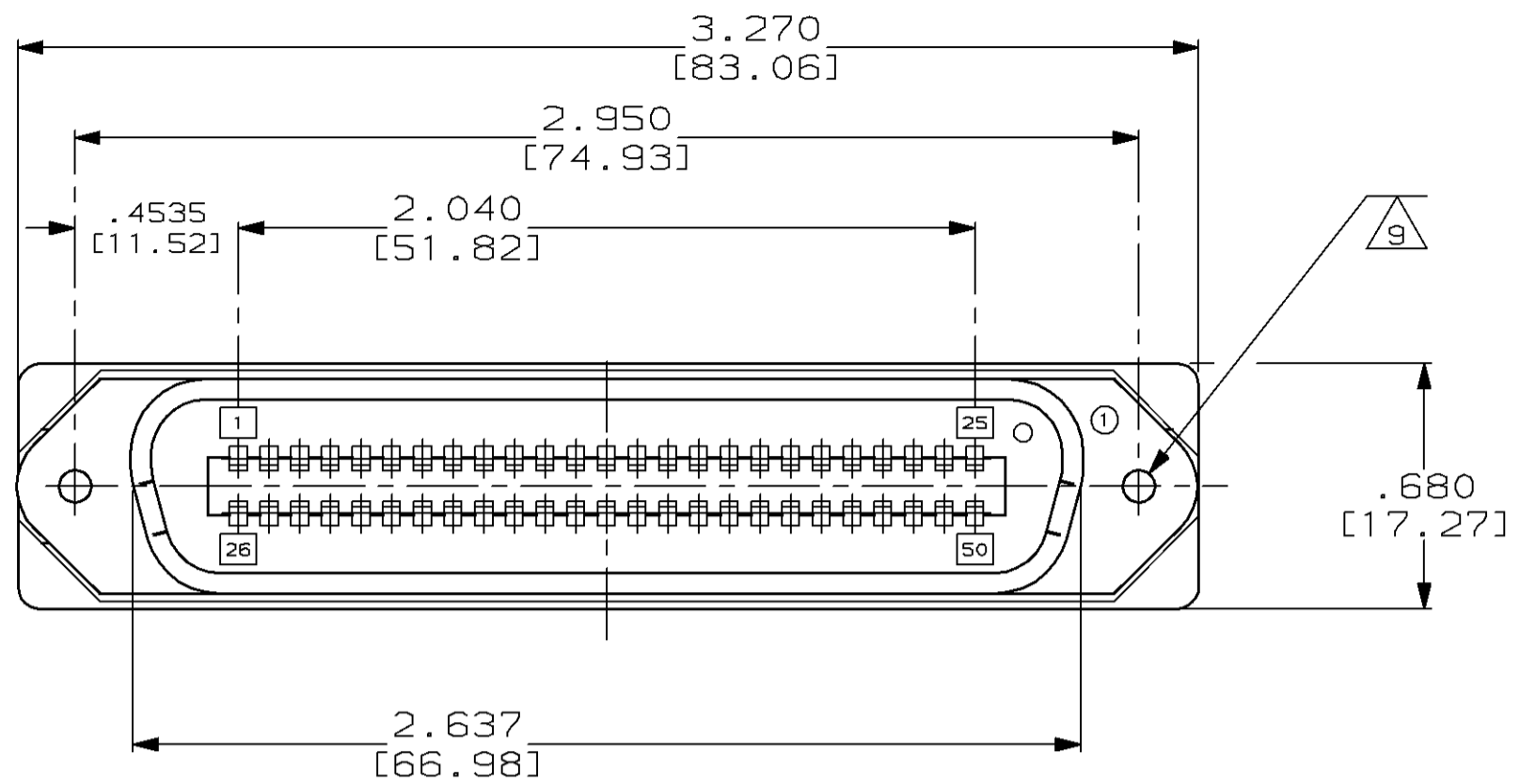


THIS DRAWING IS UNPUBLISHED. RELEASED FOR PUBLICATION
 © COPYRIGHT 19 BY AMP INCORPORATED. ALL INTERNATIONAL RIGHTS RESERVED.

PROD 1862
 CODE EN 80

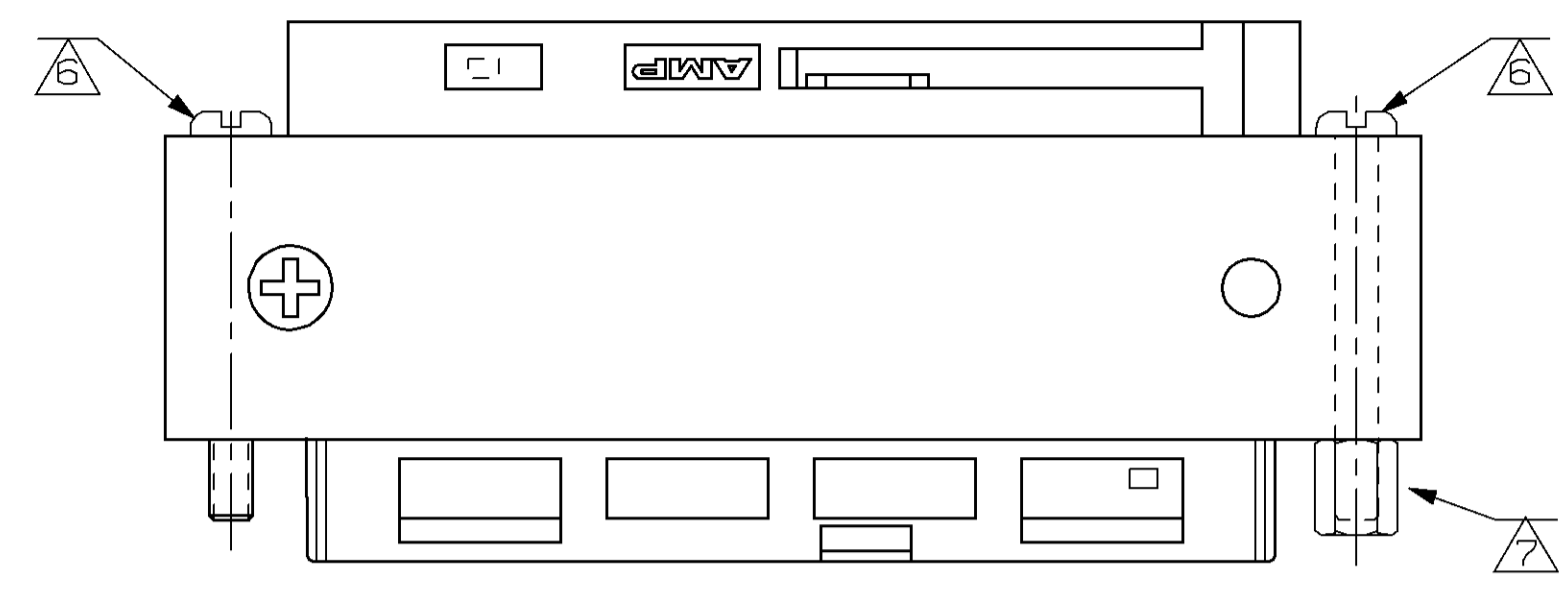
REVISIONS						
P	F	ZONE	LTR	DESCRIPTION	DATE	APPD
			O	RELEASE PER PR 0B70-0107	2-23-95	SM
			A	REVISED PER EC 0B70-0059-95	3-30-95	SM
			B	REVISED PER EC 0B70-0130-95	7-10-95	SM
			C	ADDED -6 PER EC 0B70-0190-95	10-12-95	SM
			D	REVISED PER EC 0B70-0199-95	10-25-95	SEM
			E	REVISED PER EC 0B70-0209-95	10-25-95	SEM
			F	REVISED PER EC 0B70-0246-95	11-6-95	SEM
			G	REVISED PER EC 0B70-0261-95	11-29-95	SEM
			H	REVISED PER EC 0B70-0285-95	2-7-96	GRL
			J	REVISED PER EC 0B70-0203-96	03 JUN 96	SLB
			K	ADDED -9 PER EC 0B70-0215-96	27 JUN 96	GRL
			L	RLSD 1--0 PER EC 0B70-0307-98	01 OCT 98	MR



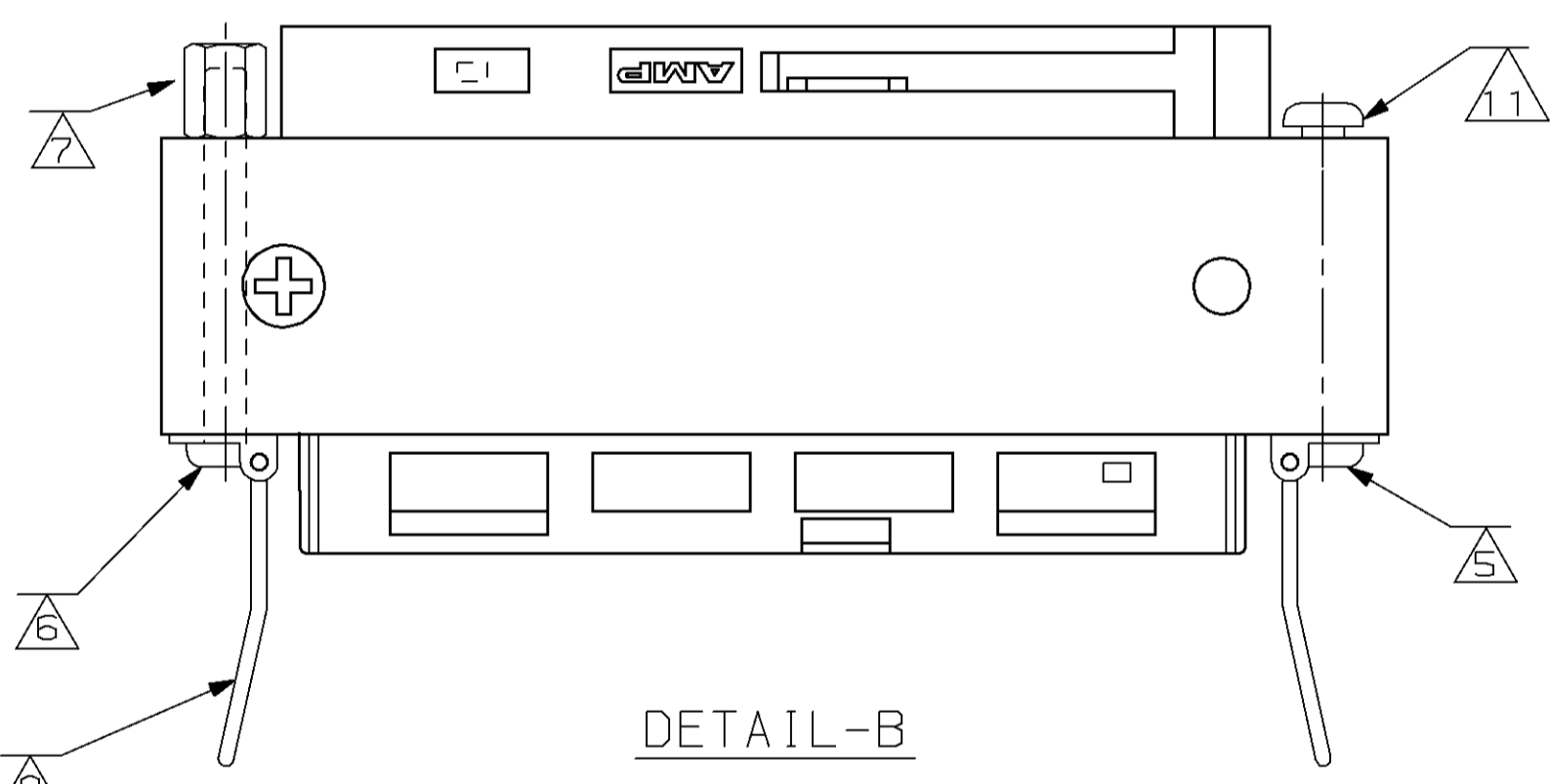
30 MICROINCHES	1000 VAC	NO HARDWARE	100 pf ±15%	1-93993-0
30 MICROINCHES	1000 VAC	DETAIL D	100 pf ±15%	93993-9
30 MICROINCHES	1000 VAC	12, 14	820 pf ±15%	93993-8
30 MICROINCHES	1000 VAC	DETAIL C	820 pf ±15%	93993-7
30 MICROINCHES	1000 VAC	13	820 pf ±15%	93993-6
30 MICROINCHES	1000 VAC	12, 14	100 pf ±15%	93993-5
30 MICROINCHES	1000 VAC	14	470 pf ±15%	93993-4
30 MICROINCHES	1000 VAC	DETAIL B 10	470 pf ±15%	93993-3
30 MICROINCHES	1000 VAC	DETAIL A 14	100 pf ±15%	93993-2
30 MICROINCHES	1000 VAC	DETAIL A 14	470 pf ±15%	93993-1

GOLD PLATING THICKNESS	DWV	HARDWARE MOUNTING	CAPACITANCE	PART NO
DO NOT SCALE PRINT. UNLESS SPECIFIED DIMENSIONS IN INCHES [mm] TOLERANCES ON : 2 PLC DEC ± - 3 PLC DEC ± .005 [0.13] ANGLES ± 0°30'				
MATERIAL		DR K. TOBIAS 02-17-95	AMP AMP INCORPORATED Harrisburg, Pa. 17105 ADAPTER, 50 POSITION, FILTERED, CHAMP™	
1 2		CHK S. MINICH 02-17-95		
		APPD V. RAMAN 02-17-95		
FINISH		APPD K. TOBIAS 02-23-95	NAME	
		PRODUCT SPEC 108-1500		
		APPLICATION SPEC -	SIZE C	CAGE CODE 00779
		WEIGHT -	SCALE 2:1	DRAWING NO 93993
			SHEET 1 of 2	

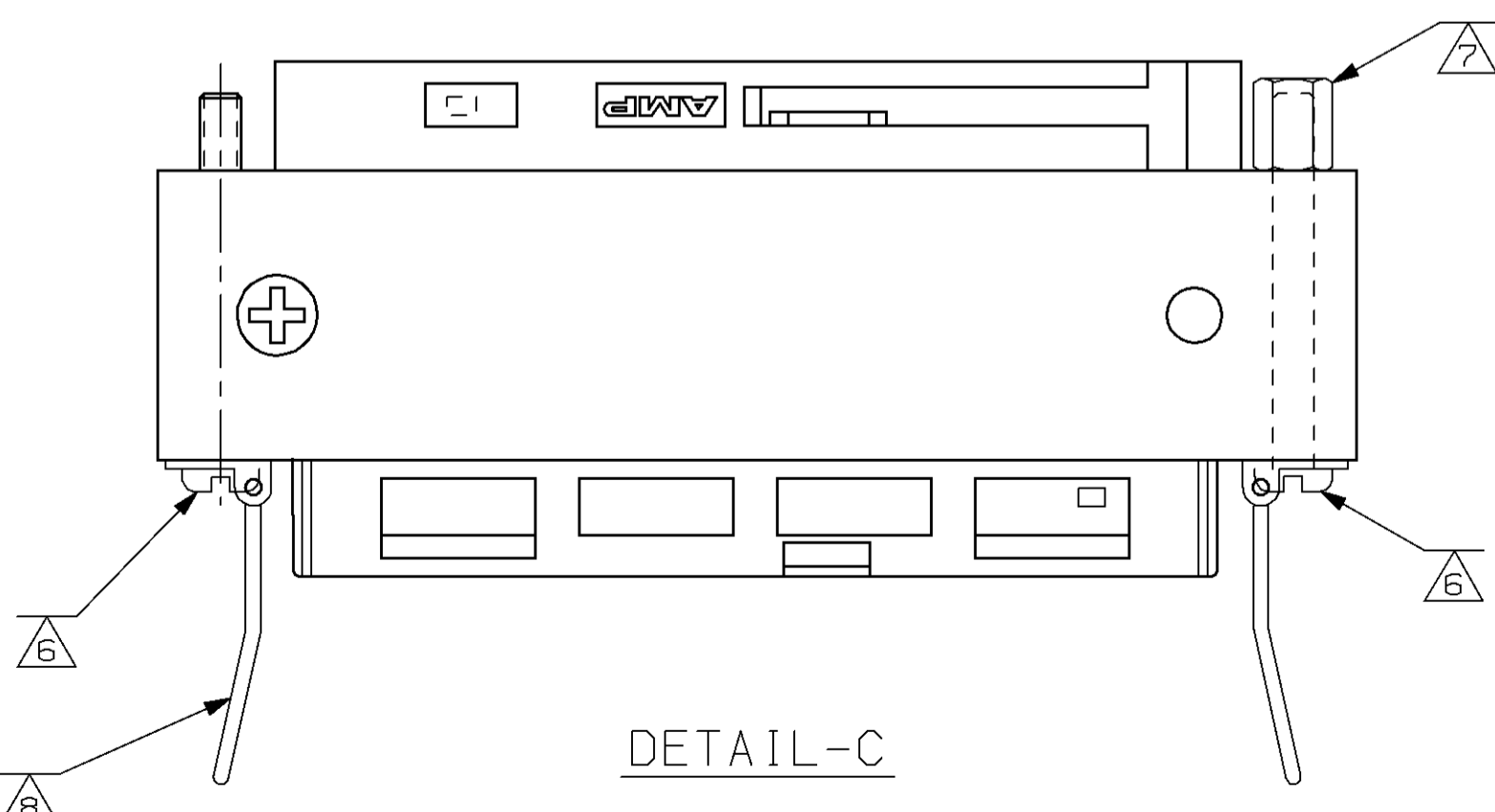
PROD 1862 CODE	LOC EN	DIST 80	P	F	REVISIONS			DATE	APPD
					ZONE	LTR	DESCRIPTION		
					L		SEE SHEET #1		



DETAIL-A

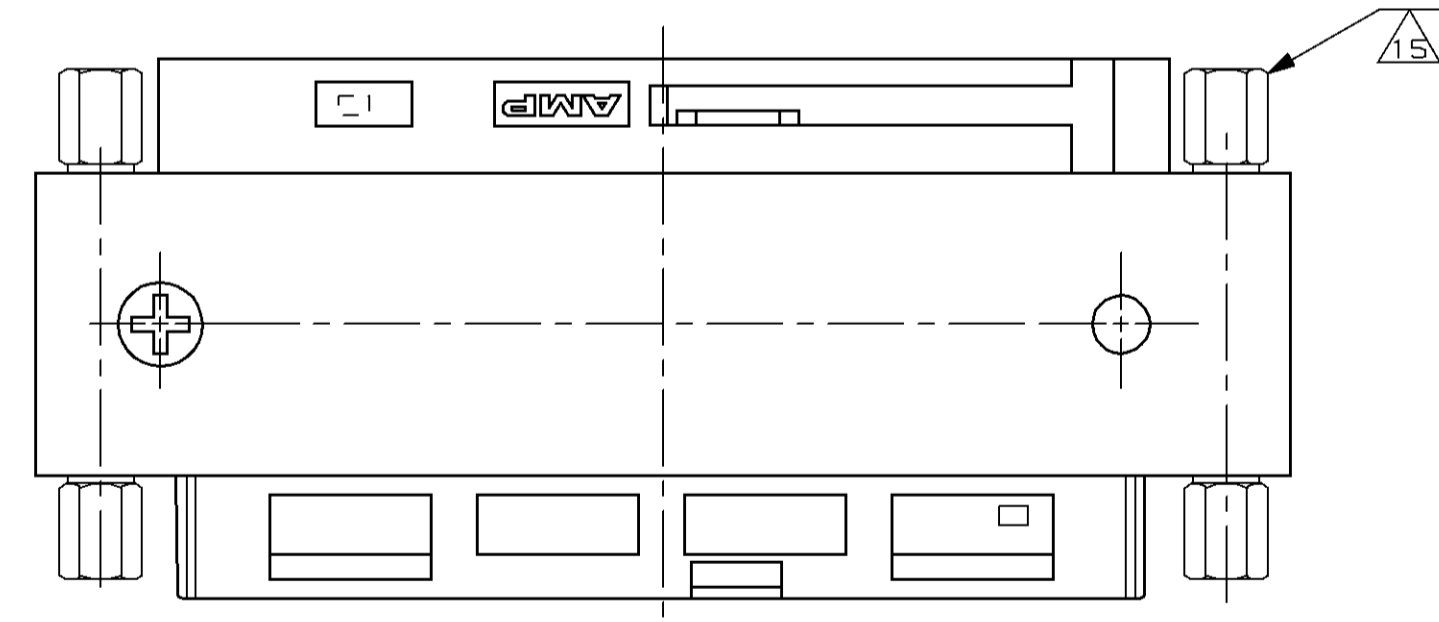


DETAIL-B



DETAIL-C

- 1 HOUSING: THERMOPLASTIC, UL 94V-0 RATING, BLACK
 TERMINAL: HIGH STRENGTH COPPER ALLOY
 COVER: ZINC
- 2 TERMINAL: GOLD PLATE (SEE TABLE FOR THICKNESS) OVER 100μIN NICKEL
 PLATE IN CONTACT AREA; BRIGHT TIN OVER NICKEL IN
 TERMINATING AREA.
 COVER: NICKEL PLATED
- 3. CONNECTOR MATES WITH IEEE-488 STYLE CONNECTORS
- 4. ELECTRICAL SPECIFICATION,
 WORKING VOLTAGE: 500 VDC
 INSULATION RESISTANCE: 1 GIGOHM MIN. @100VDC
 DWV: (SEE TABLE)
 CAPACITANCE: (SEE TABLE)
 DISSIPATION FACTOR: 2.5% MAX
- 5 #4-40 x 0.38 SCREW
- 6 #4-40 x 1.00 SCREW
- 7 STANDOFF
- 8 BAIL LOCK ASSEMBLY (2-PLACES)
- 9 #4-40 TAP, 2 PLACES (PLASTIC HOUSINGS ARE NOT TAPPED, METAL COVER
 IS TAPPED ALL THE WAY THROUGH).
- 10 MOUNTING SCREWS HAVE PHILLIPS HEAD
- 11 #4-40 x 0.50 SCREW
- 12 TWO ONE INCH LONG #4-40 SCREWS & TWO STANDOFFS SHIPPED LOOSE.
- 13 CLEARANCE HOLES FOR MOUNTING HARDWARE.
- 14 ASSEMBLY HAS INTEGRAL LATCHES.
- 15 4-40 SCREW/STANDOFF WITH #4 LOCKWASHER.



DETAIL-D

DO NOT SCALE PRINT. UNLESS SPECIFIED DIMENSIONS IN INCHES [mm] TOLERANCES ON : 2 PLC DEC ± - 3 PLC DEC ± .005 (0.13) ANGLES ± 0°30'		DR K. TOBIAS 02-17-95	PART NO	
MATERIAL	1	CHK S. MINICH 02-17-95	AMP INCORPORATED Harrisburg, Pa. 17105	
FINISH	2	APPD V. RAMAN 02-17-95	NAME	
		APPD K. TOBIAS 02-23-95	ADAPTER, CHAMP, FILTERED 50 POSN	
		PRODUCT SPEC 108-1500	SIZE C	CAGE CODE 00779
		APPLICATION SPEC -	DRAWING NO 93993	
		WEIGHT -	SCALE 2:1	SHEET 2 of 2