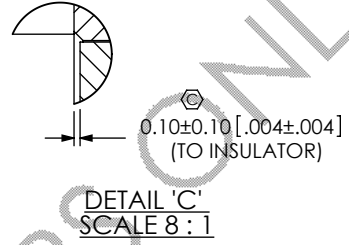
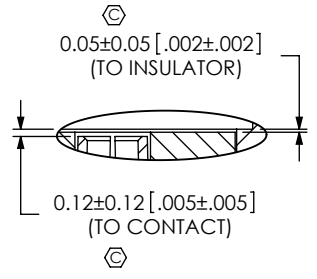
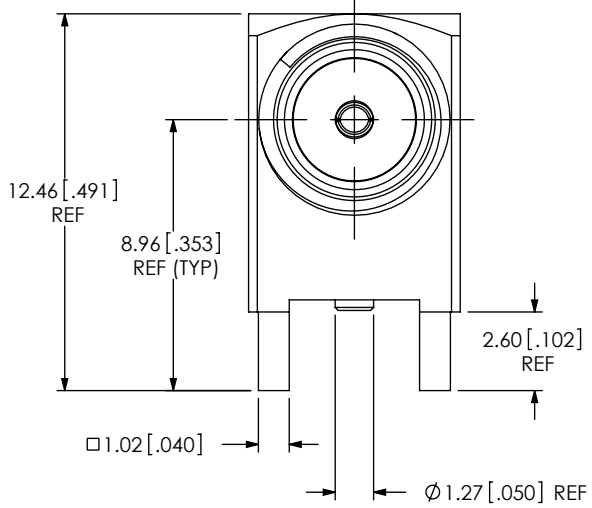


**THIS PRODUCT MANUFACTURED WITH LEAD-FREE PROCESSING**

**DESIGNED & DIMENSIONED IN MILLIMETERS [INCHES]**

**SMA-J-P-XX-RA-MT1**

DO NOT SCALE FROM THIS PRINT



GENDER  
-J: JACK

TYPE  
-P: PCB

TERMINATION  
-MT1: MIXED TECHNOLOGY

ORIENTATION  
-RA: RIGHT ANGLE

PLATING SPECIFICATION  
-HF: 30µ" GOLD CENTER CONTACT, 3µ" GOLD OUTER CONTACT  
-GF: 10µ" GOLD CENTER CONTACT, 3µ" GOLD OUTER CONTACT  
-H: 30µ" GOLD CENTER CONTACT, 3µ" GOLD OUTER CONTACT (SEE TABLE 1)

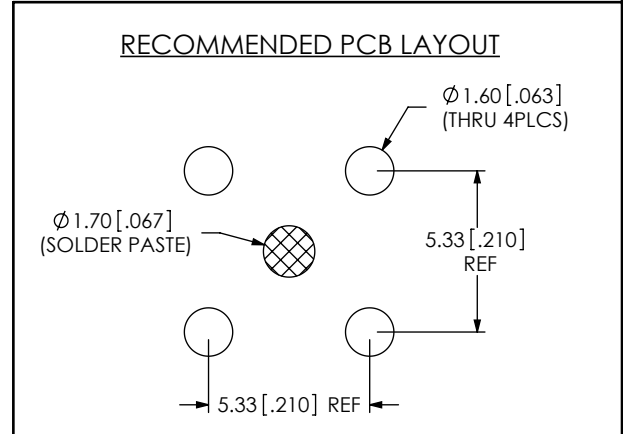
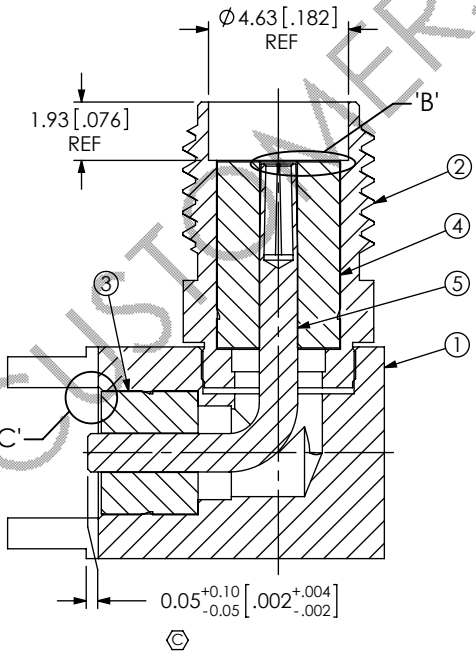
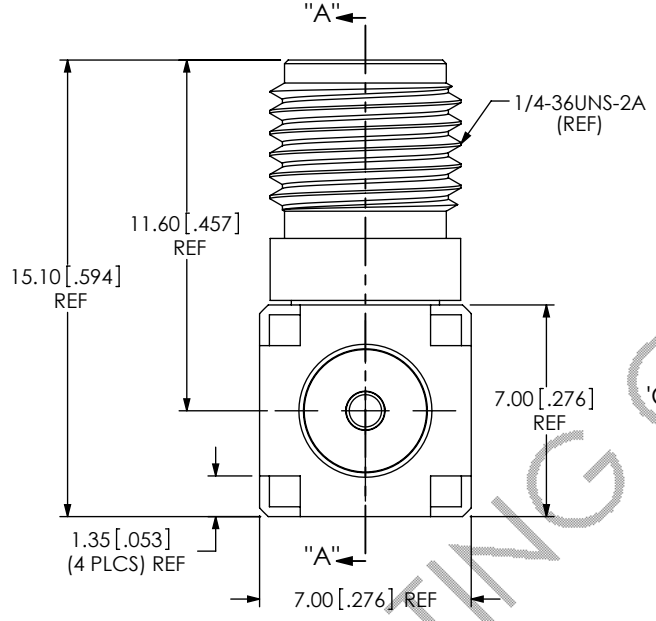
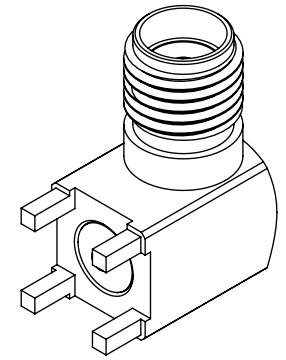


TABLE 1

ITEM	COMPONENT	-HF	-GF	-H
1	BODY	SMA-J-P-F-RA-MT1-BDY		
2	SHELL	SMA-J-P-F-RA-SM1-SHL		
3	INSULATOR 1	SMA-INS-023		
4	INSULATOR 2	SMA-INS-024		
5	SOCKET	SMA-J-P-H-RA-SM1-SKT	SMA-J-P-G-RA-SM1-SKT	SMA-J-P-H-RA-SM1-SKT

NOTES:

- ⊕ REPRESENTS A CRITICAL DIMENSION.
- PRODUCT TO BE PACKAGED PER PACKING STANDARD CO-HD-WI-3040-M. TRAY: TY-SMA001-1; COVER: TY-SMA-001-2. 1 PCS PER POCKET, 100 PCS PER TRAY.
- RoHS COMPLIANT.

SECTION "A"-"A"

UNLESS OTHERWISE SPECIFIED, DIMENSIONS ARE IN MILLIMETERS. TOLERANCES ARE:  
DECIMALS ANGLES  
X.X: ±0.3 [.01] 5°  
X.XX: ±0.13 [.005]  
X.XXX: ±0.051 [.0020]

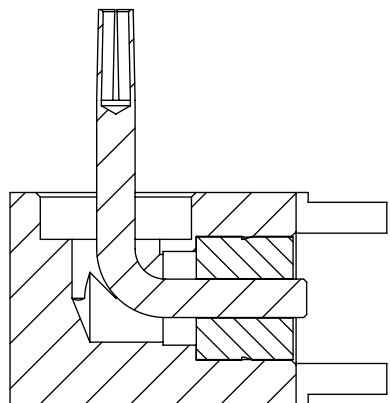
**PROPRIETARY NOTE**  
THIS DOCUMENT CONTAINS INFORMATION CONFIDENTIAL AND PROPRIETARY TO SAMTEC, INC. AND SHALL NOT BE REPRODUCED OR TRANSFERRED TO OTHER DOCUMENTS OR DISCLOSED TO OTHERS OR USED FOR ANY PURPOSE OTHER THAN THAT WHICH IT WAS OBTAINED WITHOUT THE EXPRESSED WRITTEN CONSENT OF SAMTEC, INC.

**samtec**  
520 PARK EAST BLVD, NEW ALBANY, IN 47150  
PHONE: 812-944-6733 FAX: 812-948-5047  
e-Mail: info@SAMTEC.com code 55322

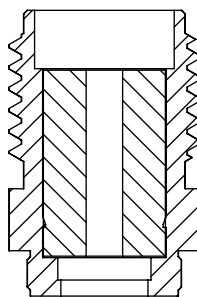
MATERIAL: DO NOT SCALE DRAWING SHEET SCALE: 4:1  
BODY AND SHELL: BRASS  
CONTACT: COPPER ALLOY  
INSULATOR: PTFE

DESCRIPTION: SMA RIGHT ANGLE, JACK, 50 OHM

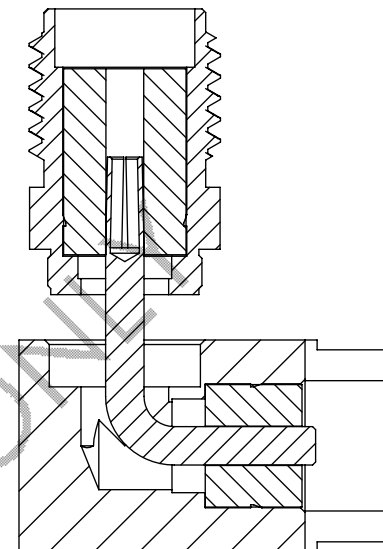
DWG. NO. SMA-J-P-XX-RA-MT1



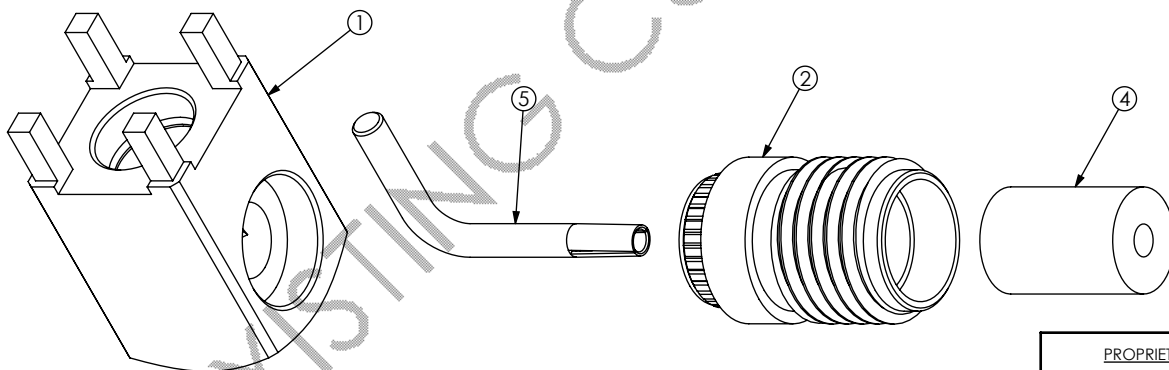
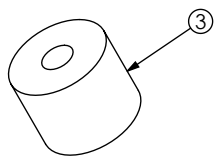
IN-PROCESS 1  
INSERT CONTACT & INSULATOR (1)



IN-PROCESS 2  
ADD INSULATOR (2)



IN-PROCESS 3  
PRESS SHELL INTO BODY



PROPRIETARY NOTE

THIS DOCUMENT CONTAINS INFORMATION CONFIDENTIAL AND PROPRIETARY TO SAMTEC, INC. AND SHALL NOT BE REPRODUCED OR TRANSFERRED TO OTHER DOCUMENTS OR DISCLOSED TO OTHERS OR USED FOR ANY PURPOSE OTHER THAN THAT WHICH IT WAS OBTAINED WITHOUT THE EXPRESSED WRITTEN CONSENT OF SAMTEC, INC.

DO NOT SCALE DRAWING

SHEET SCALE: 4:1

**samtec**

520 PARK EAST BLVD, NEW ALBANY, IN 47150  
PHONE: 812-944-6733 FAX: 812-948-5047  
e-Mail: info@SAMTEC.com code 55322

DESCRIPTION:  
SMA RIGHT ANGLE, JACK, 50 OHM

DWG. NO.  
SMA-J-P-XX-RA-MT1

BY: EMMA CHEN 10/27/2011 SHEET 2 OF 2