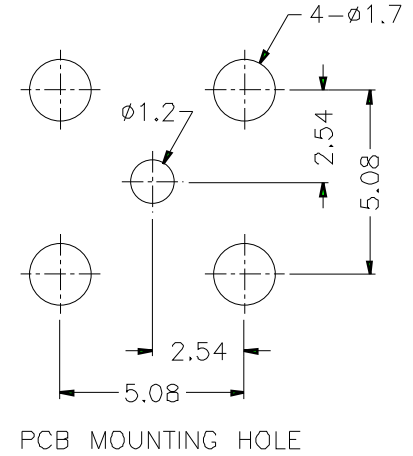
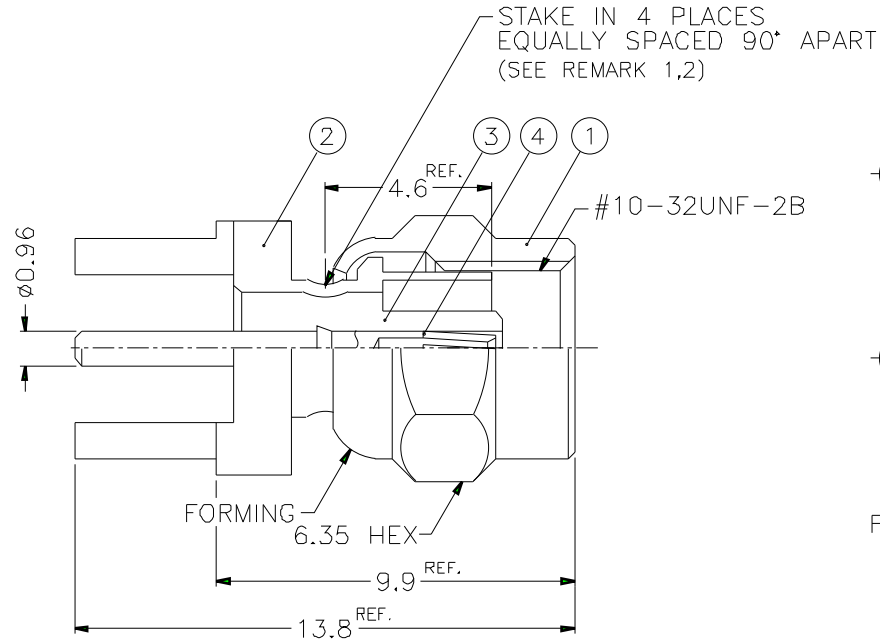
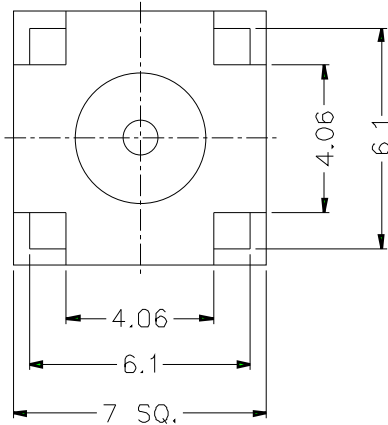


| ISS | | ZONE | | REVISIONS | | DESCRIPTION\PER REQUEST\DATE | |
|-----|--|------|--|-----------|--|------------------------------|--|
| | | | | | | | |



NOTES: FINISH (PLATING THICKNESS IN MICRO-INCHES)

1. BRASS PER QQ-B-626
2. GOLD PL. 3 MIN. THICK OVER NICKEL PL. 100 MIN. THICK OVER COPPER STRIKE
3. BERYLLIUM COPPER PER QQ-C-530
4. GOLD PL. 30 MIN. THICK OVER NICKEL PL. 100 MIN. THICK OVER COPPER STRIKE
5. TEFLON MIL-P-19468

- REMARK:1. NO.3 MUST WITHSTAND A 4 lbs. MIN. PUSHOUT FORCE FROM NO.2 AFTER STAKING OPERATION
 2. REMARK1 IS MAINTAINED BY STAMPING THE FOUR POINTS SHOWN ON THE DRAWING WITHOUT PUNCTURING NO.2

| | | | | | |
|--|--|--|--|------------------------------|----------------|
| DIMENSIONS ARE IN MILLIMETERS | | | | PART NO. SMC6251B1-3GT30G-50 | |
| UNLESS OTHERWISE SPECIFIED TOLERANCES 0.5-6 = ±0.2 6-30 = ±0.4 30-120 = ±0.6 120-315 = ±1 315-1000 = ±1.6 1000-2000 = ±2.4 | | | | APPROVED | DATE 10-11-01' |
| | | | | CHECKED | DATE 10-11-01' |
| | | | | DRAWN | DATE 10-11-01' |
| | | | | SCALE | 5/1 |

| | |
|---------------------------------------|--|
| Amphenol | |
| TITLE SMC P.C. MOUNT PLUG | |
| DRAWING NO. KJ-SMC6251B1-3GT30G-50 | |
| ITEM NO. | |

| NO | DESCRIPTION | MATERIAL | FINISH | Q'TY | DRAWING NO. |
|----|-------------|----------|---------|------|-------------|
| 4 | CONTACT PIN | NOTE 3 | NOTE 4 | 1 | SMC6252B1-4 |
| 3 | INSULATOR | NOTE 5 | NATURAL | 1 | SMC6251B1-3 |
| 2 | BODY | NOTE 1 | NOTE 2 | 1 | SMC6251B1-2 |
| 1 | SHELL | NOTE 1 | NOTE 2 | 1 | SMC6121A1-1 |

1 2 3 4 5 6 7 8