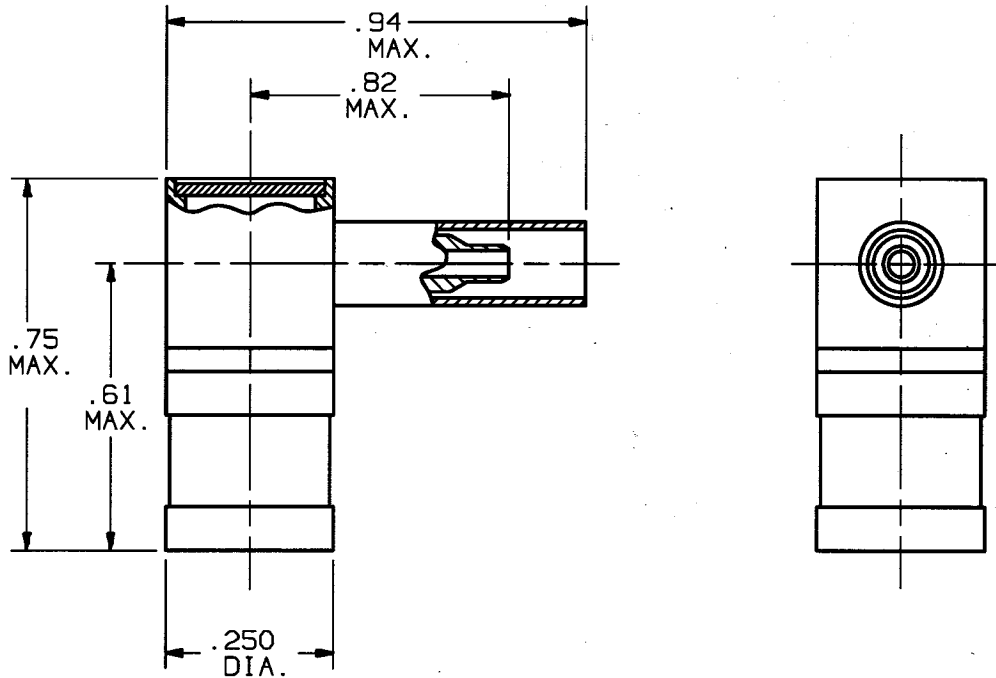


# ENG. FILE COPY

## CONFIGURATION (TOLERANCE +/- .005 UNLESS OTHERWISE SPECIFIED)



"SMB" RIGHT ANGLE, CRIMP TYPE PLUG FOR M17/93-RG178 AND M17/169-00001 CABLES

DWG. NO.

M39012/69B0008

### ELECTRICAL:

NOMINAL IMPEDANCE (OHMS)	50
FREQUENCY RANGE (GHZ)	DC TO 4.0
VOLTAGE RATING (MAX. VRMS)	250
VSWR (MAX.)	1.45 + .06f
INSERTION LOSS (DB MAX.)	.60 DB MAX. at 1.5 GHz
RF LEAKAGE (MIN. DB DOWN)	-55
RF HIGH POTENTIAL (MAX. VRMS)	500 AT 5 MHz
DIELECTRIC WITHSTANDING VOLT. (MAX. VRMS)	750
INSULATION RESISTANCE (MIN. MEGOHMS)	1000
CONTACT RESISTANCE:	
CENTER CONTACT (MAX. MILLIOHMS)	12.0
OUTER CONTACT (MAX. MILLIOHMS)	1.0

### MECHANICAL:

PER MIL-C-39012/69B SERIES.	
INTERFACE DIMENSIONS MIL-STD-348 & S/V MD-121	
RECOMMENDED MATING TORQUE	N/A
CENTER CONTACT AXIAL FORCES:	
INSERTION (MAX. POUNDS)	2.5
WITHDRAWAL (MIN. OUNCES)	1.0
CONNECTOR DURABILITY (MIN. CYCLES)	500
CONNECTOR ENGAGEMENT & DISENGAGEMENT (MAX. LBS.)	14.0
CENTER CONTACT RETENTION:	4 LBS. MIN. AXIAL FORCE

### ENVIRONMENTAL:

TEMP. RATING (DEGREES CENTIGRADE)	-65°C TO +165°C
VIBRATION (MIL-STD-202, METHOD 204, CONDITION B)	
SHOCK (MIL-STD-202, METHOD 213, COND. B)	
TEMP. CYCLING (MIL-STD-202, METHOD 107, COND. B, -65c TO 200° C)	
BAROMETRIC PRESSURE (ALTITUDE) MIL-STD-202, METHOD 105, COND. C, 70,000 FT.,	185 VRMS
HERMETICITY	N/A

CABLE ASSEMBLY INSTRUCTIONS PER S/M 300-80-510.

### MATERIAL & FINISH:

BODIES, SLEEVE & CAP: BRASS PER ASTM B 16, ALLOY 360, UNS C36000, TEMPER H02; GOLD PLATED PER MIL-G-45204, TYPE 1, GRADE C, CLASS 1 OVER COPPER PER MIL-C-14550, CLASS 4.  
 CONTACT: BERYLLIUM COPPER PER ASTM B 196, COND. TD04, ALLOY UNS-C17300, GOLD PLATED PER MIL-G-45204, TYPE 1, GRADE C, CLASS 1; OVER NICKEL PER QQ-N-290, CLASS 1.  
 SPRING: BERYLLIUM COPPER PER ASTM B 196, COND. TD04, ALLOY UNS-C17300, GOLD PLATED PER MIL-G-45204, TYPE 1, GRADE C, CLASS 1; OVER COPPER PER MIL-C-14550, CLASS 4.  
 CRIMP RING: COPPER PER ASTM B 88-88A, TYPE K, TEMPER H; GOLD PLATED PER MIL-G-45204, TYPE 1, GRADE C, CLASS 1 OVER COPPER PER MIL-C-14550, CLASS 4.  
 INSULATOR: TEFLON PER ASTM-D-1457.

SYM.	DESCRIPTION	DATE	APPR.	DRAWN:	APPROVED:
—	REL. 22562	5/96	JRW	J. R. G.	[Signature]
				DATE 5/23/96	DATE 5/28/96

**SOLITRON/VECTOR  
MICROWAVE**

3301 ELECTRONICS WAY  
WEST PALM BEACH, FL. 33407

DWG. NO.

M39012/69B0008