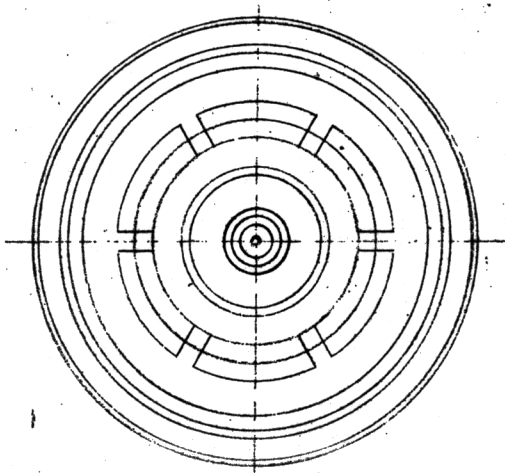
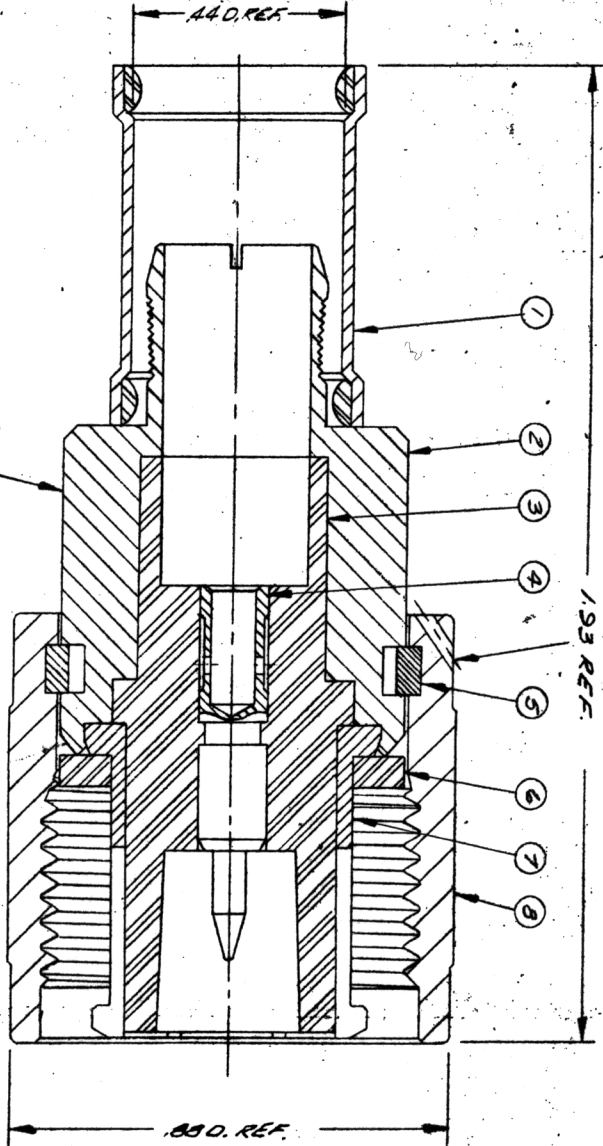


DASH NO.

DESCRIPTION

MADE FROM



STAMP: KINGS KH-59-65
PAT. 3195098

- NOTES:
1. FOR USE WITH RG-98, 214/U & BA-6903 CABLE.
 2. FOR CABLING INSTRUCTIONS SEE CP-5403.
 3. FOR CABLE TRIMMING USE KTU-154 & KTD-137.
 4. FOR FORKING USE CRIMP DIE SIZE 79.
 5. ITEMS ①, ② AND ③ TO HAVE TR-S FINISH.

- UNLESS OTHERWISE SPECIFIED:
1. TOLERANCES: FRACTIONS & 2 PLACE DECIMALS ±.010
 2. 3 PLACE DECIMALS ±.004
 3. ANGLES 90° ±.30°
 4. NO FILLETS PERMITTED.
 5. SURFACE ROUGHNESS 63 MICRONS RMS MAX. EXCEPT THAT THE SUM OF THEIR TOLERANCES.
 6. ALL DIMENSIONS PRIOR TO PLATING.

ITEM	REQ'D	DESCRIPTION	PART NO.
8	1	COUPLING NUT	
7	1	OUTER CONTACT	
6	1	GASKET	
5	1	C-RING	
4	1	NONCAPTIVE CRIMP CONTACT	1-843-3-1M9
3	1	INSULATOR	
2	1	K-GRIP BODY	
1	1	W/P K-GRIP SLEEVE	N-57-140-6-M06

KH-59-65

REVISIONS	
ISSUE	CHANGES
0.	ER 14990 JL 22 NOV 75
1	CN 15700 MJB 20 APR 76

HN PLUG

DRAWN: JL DATE: 6 NOV 75

APPR: SB DATE: 22 NOV 75

KINGS ELECTRONICS
40 MARLBOROUGH ROAD
TUCKAHOE, N. Y. 10707

KH-59-65

USED ON:

REF:

FINISH:

SPEC:

MATL:

SPEC: