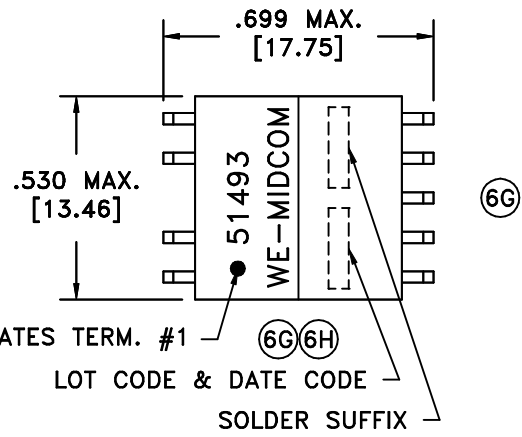
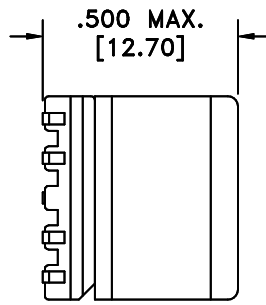
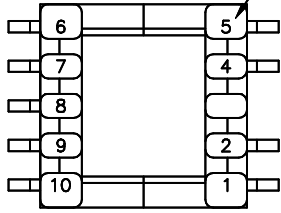


TERM. NO.'s FOR REF. ONLY

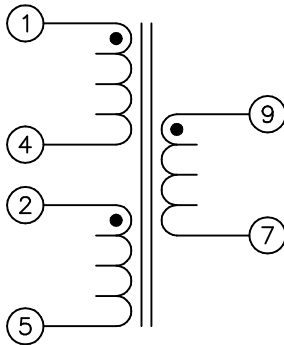


DOT LOCATES TERM. #1

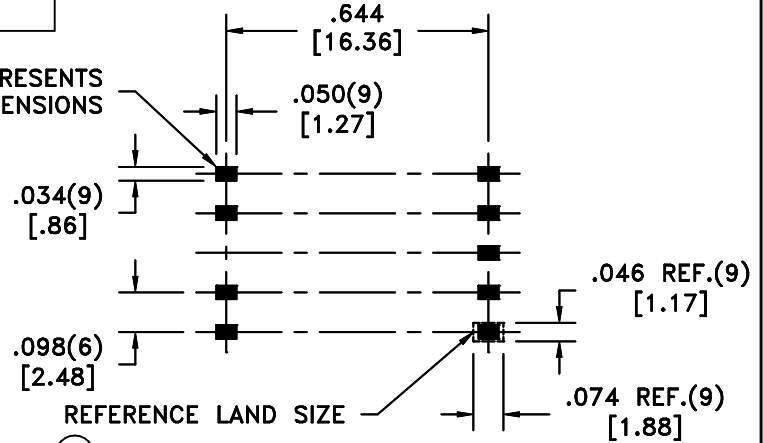
LOT CODE & DATE CODE
SOLDER SUFFIX

SOLDER SUFFIX	CUSTOMER TERMINAL	RoHS	LEAD(Pb)-FREE
	Sn63%, Pb37%	No	No
LF1	Sn96%, Ag4%	Yes	Yes

(6H)



AREA REPRESENTS
TERMINAL PAD DIMENSIONS



REFERENCE LAND SIZE
(6D) CUSTOMER TO DETERMINE LAND LAYOUT

ELECTRICAL SPECIFICATIONS @ 25°C unless otherwise noted:

- LONGITUDINAL BALANCE: 45dB min., 10k - 400kHz, per ITU Method (L->M).
- D.C. RESISTANCE (@20°C):
1-4, 3.25 ohms ±10%.
2-5, 3.25 ohms ±10%.
9-7, 2.15 ohms ±10%.
- INSERTION LOSS: 1.0dB max., 100kHz, 41.7 ohm load.
- DIELECTRIC RATING: 2000VAC for 1 second between 1-9(tie 2+4).
- INDUCTANCE: 2.75mH ±6%, 10kHz, 100mVAC, 0/100mADC, 1-5(tie 2+4), Ls.
- LEAKAGE INDUCTANCE: 15uH max., 100kHz, 100mVAC, 1-5(tie 2+4, 7+9), Ls.
- RETURN LOSS: 16dB min., 30k - 400kHz, 41.7 ohm load, tie(2+4).
- URNS RATIO: (1-5):(9-7) = 1.8:1, tie(2+4), ±2%.
- INTERWINDING CAPACITANCE: 100pF max., 100kHz, 100mVAC, 1-9(tie 2+4), Cs.
- TOTAL HARMONIC DISTORTION: -80dB max., 10kHz, 1.6Vrms, 41.7 ohm load, 135 ohm input, tie(2+4).
- OPERATING TEMPERATURE RANGE: -40°C to +85°C.

Designed to comply with the following requirements as defined by IEC60950, EN60950, UL60950/CSA60950 and AS/NZS60950:
- Supplementary insulation for a primary circuit at a working voltage of 250Vrms.

DETAILS SUBJECT TO CHANGE

(6B)

AGENCY NUMBER	
BABT	NC/011599
UL60950	E205930
CSA60950 (Via CUL)	E205930
IEC60950	NO.30670*
ACA/AUSTEL	NO.30670*
JAPAN	NO.30670*
*DEMONSTRATES TO COMPLY VIA NEMKO TEST REPORT.	

Unless otherwise specified:
Tolerances:
Angles: ±1°
Fractions: ±1/64
Decimals: ±.005[.13]

This drawing is dual dimensioned.
Dimensions in brackets are in millimeters.

DRAWING TITLE
TRANSFORMER

eiSos p/n:

REVISIONS: SEE SHEET 1

Midcom WE
www.midcom-inc.com

DRAWING NO. **51493R/-V/-LF1**

SCALE --- SHEET 2 OF 6

REV. 6J 6/06

DWG.# 51493R/-V/-LF1