

Insulated Terminals Hi Alumina Ceramic Double Turret External Threads

Part No.	"T" Thread	U	W	X	Y	Z	Terminal	DWV
1440A	6-32	.188	.250	.188	.312	.530	1281	2800
1440B	6-32	.188	.250	.250	.312	.530	1281	2800
1440C	6-32	.188	.250	.312	.312	.530	1281	2800
1440D	6-32	.188	.250	.375	.312	.530	1281	2800
1440E	4-40	.188	.250	.188	.312	.530	1281	2800
1440F	4-40	.188	.250	.250	.312	.530	1281	2800
1440G	4-40	.188	.250	.312	.312	.530	1281	2800
1440H	4-40	.188	.250	.375	.312	.530	1281	2800
1460A	6-32	.230	.312	.188	.359	.600	1280	3400
1460B	6-32	.230	.312	.250	.359	.600	1280	3400
1460C	6-32	.230	.312	.312	.359	.600	1280	3400
1460D	6-32	.230	.312	.375	.359	.600	1280	3400
1460E	4-40	.230	.312	.188	.359	.600	1280	3400
1460F	4-40	.230	.312	.250	.359	.600	1280	3400
1460G	4-40	.230	.312	.312	.359	.600	1280	3400
1460H	4-40	.230	.312	.375	.359	.600	1280	3400
1480A	2-56	.141	.188	.125	.203	.360	2030	2200
1480B	2-56	.141	.188	.218	.203	.360	2030	2200
1480C	4-40	.141	.188	.125	.203	.360	2030	2200
1480D	4-40	.141	.188	.218	.203	.360	2030	2200

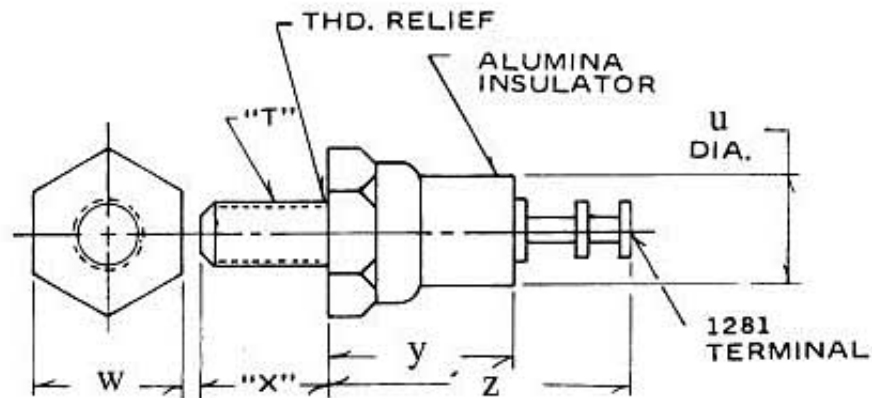


Fig. 1440

Complete this form to get quotation from Staffall (* indicates required information)

USECO parts Select one Part number for quotation

* Suffix Please enter the "suffix" (for ex: "A", "B") or "None" if applicable

* Plating Please enter the plating(s) (for ex: "-4", "-4-12") or "None" if applicable

* Quantity

*Name

*Email Address or Phone #

Comments, specific questions or Information Staffall USECO needs to help process your request:

Close window in order to view other products!