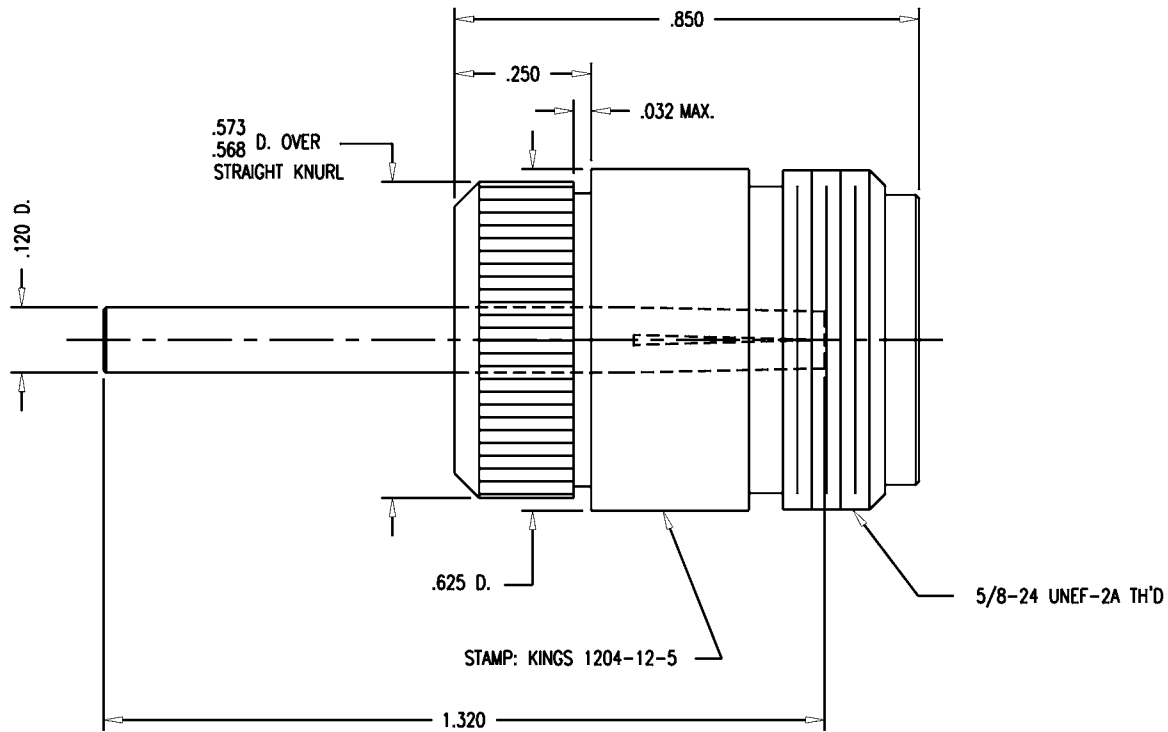


GSD



NOTES:

1. CENTER CONTACT TO BE SUPPLIED UNASSEMBLED.
2. INTERFACE PER MIL-STD-348, FIG. 304-2.
3. MATERIALS:
 INSULATOR-TEFLON, ASTM-D-1457
 CENTER CONTACT-BER. COP., ASTM-B-196
 BODY-BRASS, ASTM-B16
4. FINISHES:
 CENTER CONTACT-GOLD PLATE PER MIL-G-45204
 BODY-SILVER PLATE PER QQ-S-365
5. ELECTRICAL CHARACTERISTICS:
 NOMINAL IMPEDANCE-50 OHMS
 FREQUENCY RANGE-DC TO 11 GHZ
 WORKING VOLTAGE-1000 VRMS
6. WHEN THIS ITEM IS ORDERED BY BARTLEY MACHINE CO.
 PARTS MUST BE SHIPPED IN PARTITION TYPE PACKAGING.
 (WITHOUT INDIVIDUAL BAGS)

1204-12-5

REVISIONS

| ISSUE | CHANGES |
|-------|----------------------------|
| 0 | ER 33968 KH 07/14/92 |
| 1 | CN 35204 D MJB 12/07/93 |
| 2 | CN 35491 C KH 04/14/94 |
| 3 | CN 35585 A KVH 06/07/94 |
| 4 | CN 35982 C MJB 02/07/95 |
| 5 | CN 37220 D KH 02/21/97 |

KAM2121

SCALE 4:1

APPROX SURFACE AREA

WAS: E-17510

USED ON

REF:

RCPT, TYPE "N", (F)

DRAWN KH DATE 07/14/92

DESIGN LI DATE 07/14/92

APPR. DATE

KINGS
 ELECTRONICS CO., INC.
 TUCKAHOE, NEW YORK 10707

GSD

1204-12-5