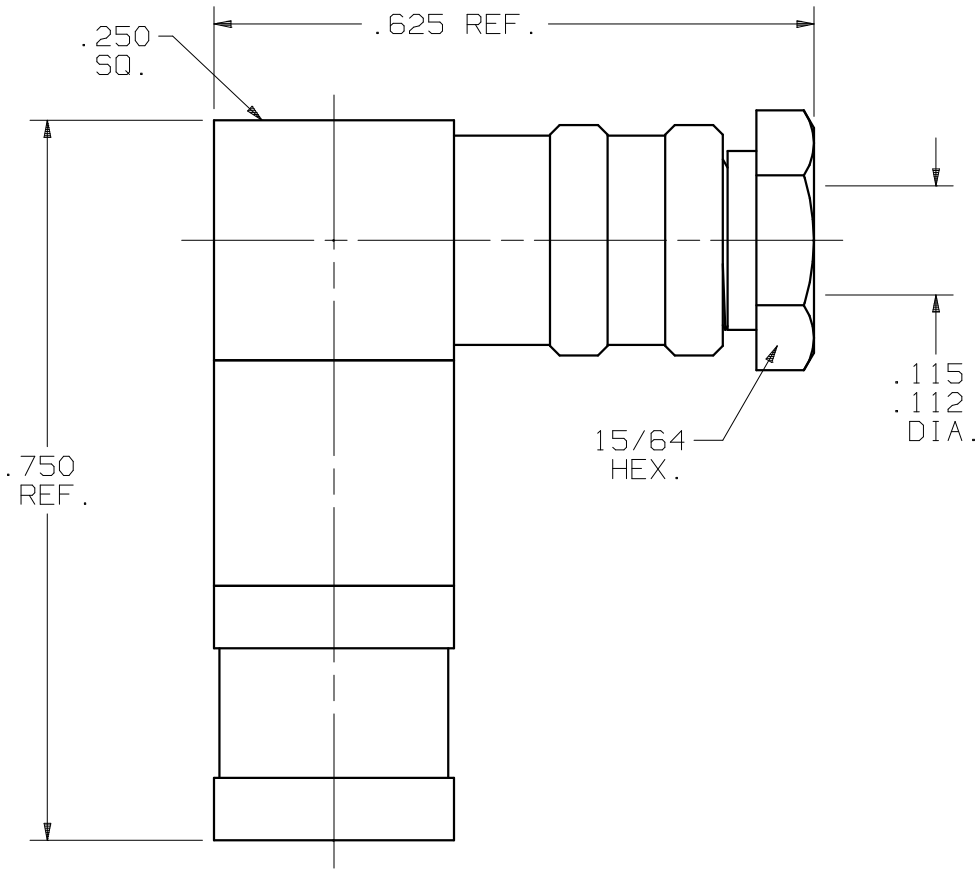


PRODUCT DATA DRAWING

CAD GENERATED DRAWING	DCN CONTROLLED DOCUMENT	DWG. NO. 2310-0012
-----------------------------	-------------------------------	--



MATERIAL:

BODY
CAP
SLEEVE
FERRULE
CLAMP NUT: BRASS PER ASTM-B-16, ALLOY
UNS C36000, H02

CONTACT
SPRING: BERYLLIUM COPPER PER ASTM-B-196,
ALLOY C17300, COND. TD04

INSULATOR: PTFE PER ASTM-D-1710

FINISH:

BODY
CAP
SLEEVE
FERRULE
CLAMP NUT: GOLD PER MIL-G-45204, TYPE I,
GRADE C, CLASS 1; OVER COPPER
PER MIL-C-14550

CONTACT
SPRING: GOLD PER MIL-G-45204, TYPE I,
GRADE C, CLASS 1; OVER COPPER
PER MIL-C-14550

PERFORMANCE:

IMPEDANCE: 50 OHMS
DWV: 750 VRMS
FREQ. RANGE: DC-4.0 GHz
INSUL. RES.: 1000 MEGOHMS, MIN.

SYM.	DESCRIPTION	DATE	APPR.	UNLESS OTHERWISE SPECIFIED: 1) ALL DIMENSIONS ARE AFTER PLATING. 2) BREAK CORNERS & EDGES .005 R. MAX. 3) CHAM. 1s† & LAST THDS. 4) SURFACE ROUGHNESS 63 J MIL-STD-10. 5) DIAS. ON COMMON CENTERS TO BE CONCENTRIC WITHIN .005 T.I.R. 6) REMOVE ALL BURRS.	DIMENSIONS ARE IN INCHES TOLERANCES:			<i>SV Microwave, Inc.</i> 2400 Centrepark West Drive, Suite 100 West Palm Beach, FL 33409
-	REL. DCN 29485	02/03	STW		DECIMALS .X ±.030 .XX ±.015 .XXX ±.005	FRACTIONAL ±1/64	ANGULAR X° ±1°0' X°X' ±15'	
				DRAWN: MEB 02/10/03	MATERIAL: SEE ABOVE			DWG. NO. 2310-0012
				CHECKED: STW 02/10/03	FINISH: SEE ABOVE	AREA: N/A		
				APPROVED: STW 02/10/03	SIZE A	CAGE NO. 95077	SCALE N/A	