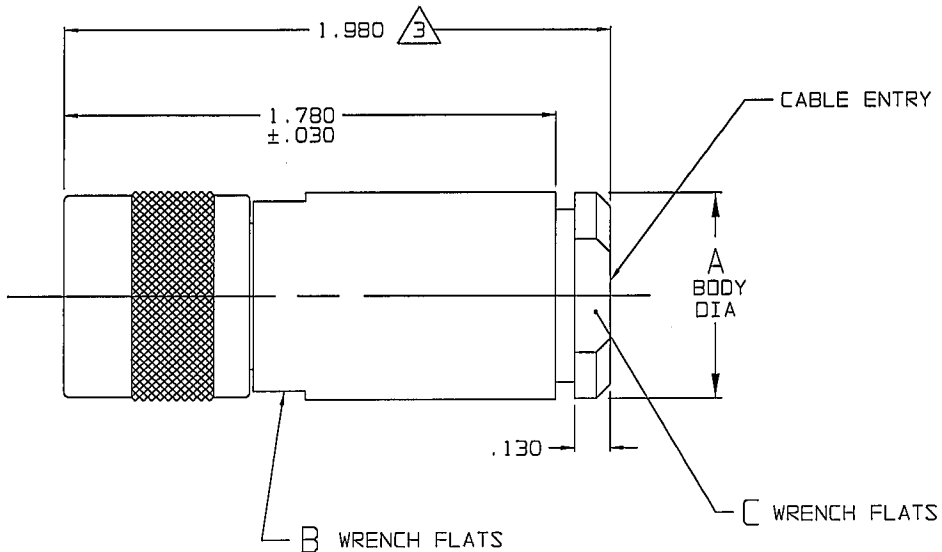
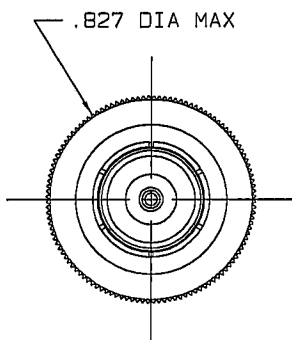


DATA CONTAINED IN THIS DOCUMENT IS PROPRIETARY TO TROMPETER ELECTRONICS INC. AND SHALL NOT BE DISCLOSED, COPIED OR USED FOR PROCUREMENT OR MANUFACTURE WITHOUT EXPRESS WRITTEN PERMISSION OF TROMPETER ELECTRONICS INC.

REVISIONS		3-0103	SH 1
REV	DESCRIPTION	DATE	APPROVED
M	REVISED PER ECO 15097	6/24/03	WSJ

DASH NO	CABLES ACCOMMODATED	A DIA	B FLATS	C FLATS	ASSEMBLE PER			
-7	TRC-50-2/TRC-75-2	.750	.687	.625	TAI-175			
-8	8227, BELDEN				TAI-116			
-9	TWC-7B-2, RG-108, TWC-124-2				TAI-131			
-10	754E, W.E.CO., RG-22				TAI-175			
-11	760A, W.E.CO.				1.000	.937	.875	TAI-116
-12	16PEVL, W.E.CO.							TAI-175
-13	TRF-59, TIMES							TAI-116
-13A	8232, BELDEN							TAI-175
-14	21-529, ESSEX 8233, BELDEN							TAI-124
-14A	TRC-50-4A							TAI-175
-15	21-583, ESSEX							TAI-116
-16	21-950, ESSEX							TAI-175
-26	275-3962, MICRODOT							TAI-116
-29	TWC-124-1A							TAI-175
-32	TRC-50-1	TAI-124						
-33	TRC-75-1	TAI-175						
-42	21-204, ESSEX	.750	.687	.625				TAI-116
-46	9860, BELDEN							TAI-116
-47	M17/176-00002				TAI-175			
-54	89207, BELDEN				TAI-175			
-55	89272, BELDEN				TAI-116			
-61	5012W5812, RAYCHEM				1.000	.937	.875	TAI-175
-62	751BA0811, RAYCHEM							TAI-175

RED INDICATES ORIGINAL



-9 SHOWN

4. THREADED CONCENTRIC TWINAX/TRIAX "TTS" SERIES CABLE PLUG W/SOCKET CENTER CONTACT

3 DIM IS MAX WHEN ASSEMBLED TO CABLE

2. FINISH: TFS-1A (NICKEL)

1. ALL DIM ARE IN INCHES

INTERPRET DRAWING PER MIL-STD-100 DIMENSIONS ARE IN INCHES AND INCLUDE FINISH THICKNESS UNLESS OTHERWISE SPECIFIED		TOL: UNLESS SPECIFIED .XX .XXX ±.005 .XXXX ANGLES			
DRAWN AAH	DATE 6-23-03	MATERIAL:			
CHECKED T. S. [Signature]	DATE 6-23-03	FINISH:		SIZE B	CAGE CODE 14949
QUALITY [Signature]	DATE 6/25/03	SCALE 2/1		DRAWING NO. 3-0103	REV. M
HANDLED [Signature]	DATE 6/24/03	DATE 1-8-84		SHEET 1C	
APPROVED WSJ [Signature]	DATE 6/24/03	DO NOT SCALE DWG			
305-0496 NEXT ASSY	CAD FILE NO. 30103M				