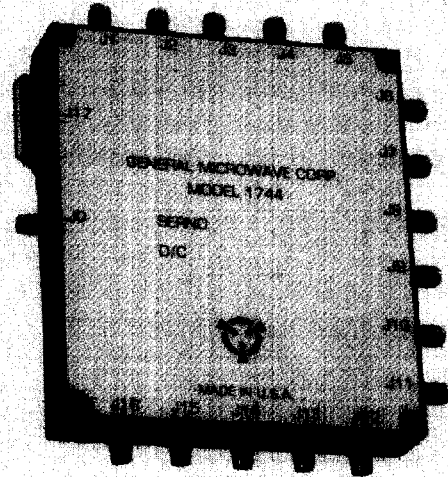


Model 1744 SP16T PIN Diode Switch

General Microwave Corporation's SP16T PIN Diode Switch, Model 1744, covers the 2 to 18 GHz frequency band. The switch exhibits a maximum insertion loss of 6.0 dB and an isolation of 60 dB to 14 GHz and 50 dB to 18 GHz. The switching speed is 500 nsec maximum. This compact unit measures 4.5 x 4.0 x 0.75". Power supply voltages are +5 V and +15 VDC, and it is controlled by 7-bit TTL binary logic. The switch operates over the temperature range of -40°C to +85°C.



SPECIAL ORDER PRODUCT
-CONSULT FACTORY BEFORE ORDERING-

- **Frequency Range: 2-18 GHz**
- **Non-reflective**
- **High Isolation, Low Insertion Loss and VSWR**
- **Switching Speed: 500 nsec**

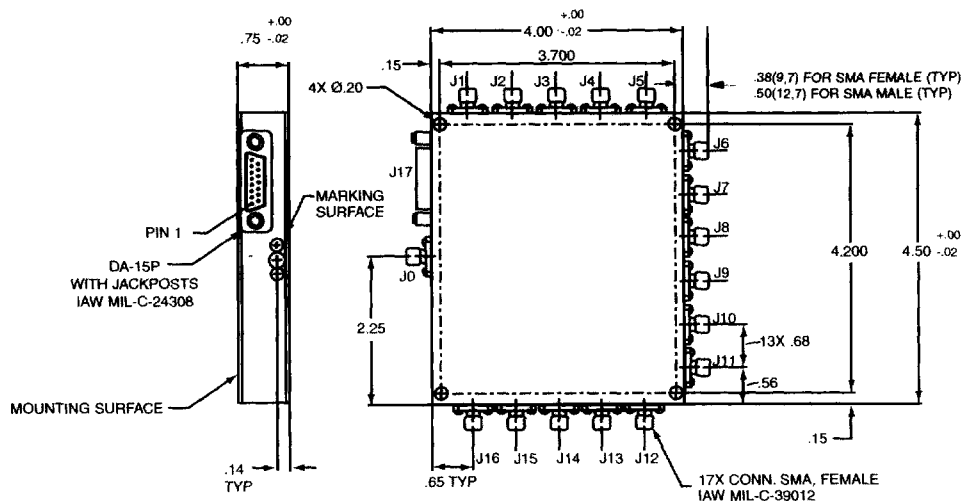


Model 1744 Specifications

PERFORMANCE CHARACTERISTICS

Frequency	2.0 to 18.0 GHz
Insertion Loss	6.0 dB max
VSWR (on or off)	2.0:1 max
Isolation	60 dB min to 14 GHz, 50 dB min to 18 GHz
Switching Speed500 nsec max
Power Handling Capability	
Without Performance Degradation	
Input to any OFF port100mW cw or peak
Input to any ON port1 W cw or peak
Input to common port1 W cw or peak
Survival Power	
Input to any OFF port1 W average, 10 W peak (1 usec max pulse width)
Input to any ON port1 W average, 75 W peak (1 usec max pulse width)
Input to common port1 W average, 75 W peak (1 usec max pulse width)
Power Supply	+5 VDC at 250 mA and +15 VDC at 100 mA
Control Input Impedance	TTL, two unit load. (A unit load is 0.8 mA sink current and 40 uA source current.)
Control Logic5-bit TTL (Decoded Input)
Connector	DA-15P Multipin
Operating Temperature0° to +70° C

DIMENSIONS AND WEIGHT



J17 PIN FUNCTIONS	
PIN	FUNCTION
1	NOT USED
2	+15V
3	NOT USED
4	NOT USED
5	NOT USED
6	CTL-3 (MSB-2)
7	CTL-5 (MSB)
8	CTL-6 (MSB-1)
9	GND
10	GND
11	CTL-2 (LSB+1)
12	NOT USED
13	CTL-1 (LSB)
14	NOT USED
15	+5V

MODEL 1744
Wt. 15 oz. (426 gm.)

Dimensional Tolerances, unless otherwise indicated: .XX ± .02; .XXX ± .005

