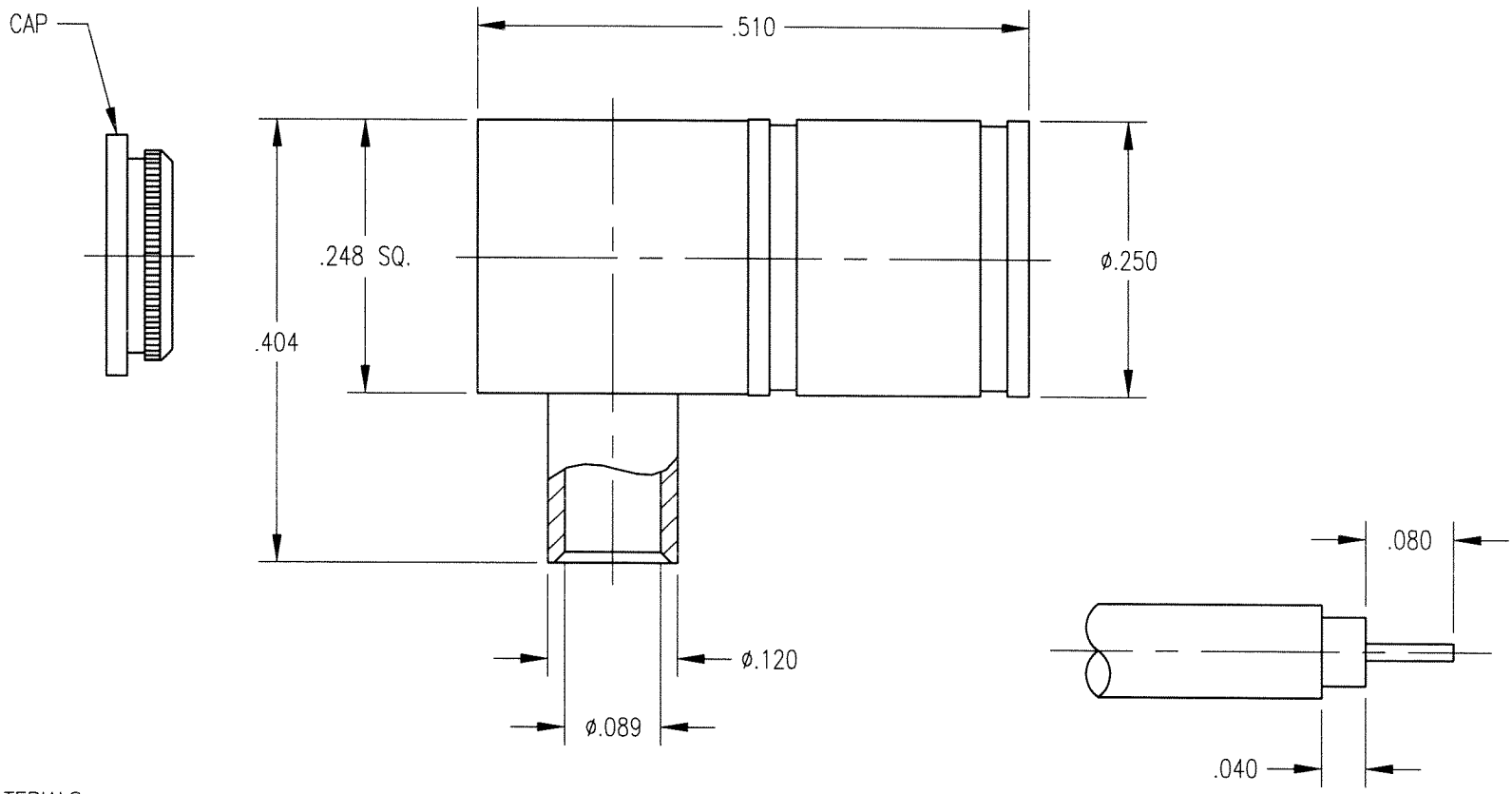


DWG NO.		512-500-0850N	
REV	DESCRIPTION	BY DATE	APPD
C	ECR 6849	LO/1/9 10/1/01	MS



CABLE TRIMMING DIMENSIONS

NOTES:

- MATERIALS:  
 CONTACT: COPPER ALLOY  
 RETAINING RING: BERYLLIUM COPPER PER ASTM B194  
 INSULATOR: TEFLON PER ASTM D1710  
 ALL OTHER METAL PARTS: BRASS PER ASTM B16
- FINISH:  
 BODY: .000015 MIN. GOLD PER MIL-G-45204 OVER  
       .000050 MIN. NICKEL PER QQ-N-290  
 CONTACT: .000030 MIN. GOLD PER MIL-G-45204 OVER  
       .000050 MIN. NICKEL PER QQ-N-290  
 CAP AND SHROUD: .000100 MIN. NICKEL PER QQ-N-290 OVER  
       COPPER FLASH PER MIL-C-14550
- DESIGNED FOR USE WITH .085 SEMI-RIGID CABLE.
- FOR CABLING PROCEDURES USE CAP 5-03 WITH TRIMMING DIMENSIONS SHOWN.

PER ASME Y14.5M-1994 UNLESS OTHERWISE SPECIFIED: DIMENSIONS ARE IN INCHES [MM]				<b>Litton</b>	
TOLERANCES: DECIMALS .xx ± .01/0.254 xxx ± .005/0.127				<b>Winchester/Retconn</b> 400 Park Road Waterbury, Connecticut 06795	
ANGLES ± 2' SCALE: 6:1				TITLE	
<b>CUSTOMER DRAWING</b>				SMB RIGHT ANGLE PLUG .085 S.R.	
DRAWN MJF	DATE 6/1/01	CHECKED <i>[Signature]</i>	DATE 6/27/01	A 512-500-0850N	
APPROVED <i>[Signature]</i>	DATE 6/1/01	APPROVED <i>[Signature]</i>	DATE 6/27/01	SHT. OF 1 1	REV. C