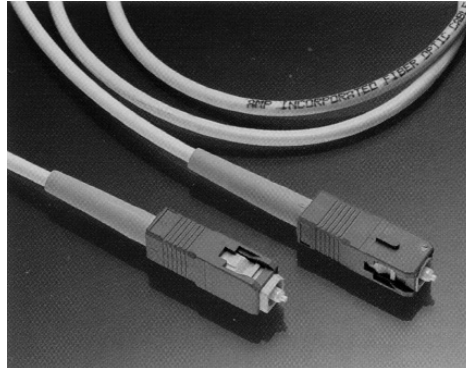


SC & FC Singlemode Cable Assemblies

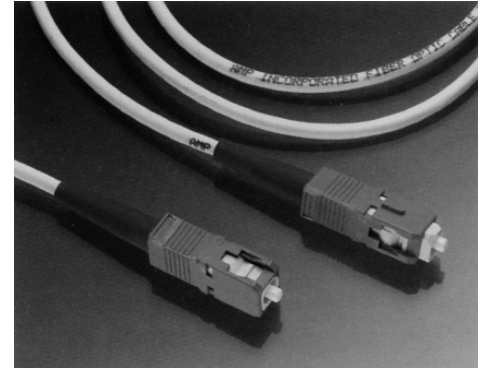
SC-SC Style Cable Assemblies

Product Facts

- Composite body w/ ceramic ferrule
- Compliant with:
 - JIS C-5973
 - ANSI X3T11 Fibre Channel
 - TIA 568
- Insertion Loss:
 - 0.2 dB typical
 - 0.5 dB maximum



SC/APC Connectors

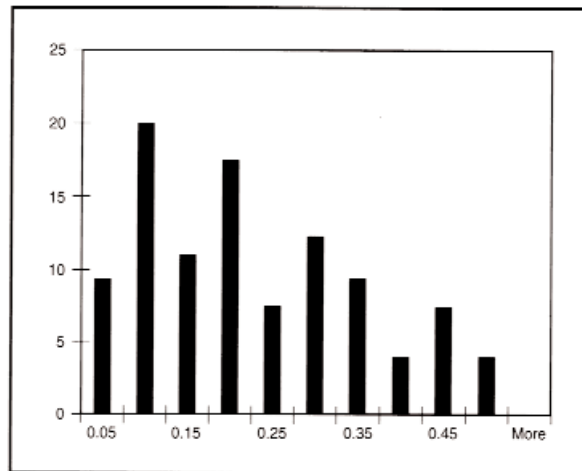


SC/UPC to SC/UPC Cable Assembly

Description	Min. Return Loss	Cable Diameter	Part Numbers				
			Length (m)				
			1	3	5	10	15
Single-Fiber Jumpers							
Simplex SC/APC to SC/APC	65 dB	3.0mm	492188-1	492188-3	492188-5	1-492188-0	1-492188-5
	65 dB	900µm	504678-1	504678-3	504678-4	504678-5	—
	55 dB	3.0mm	492015-1	492015-3	492015-4	492015-5	492015-6
Simplex SC/UPC to SC/UPC	55 dB	2.0mm	1278236-1	1278236-3	1278236-5	1-1278236-0	1-1278236-5
	55 dB	900µm	492276-1	492276-3	492276-5	1-492276-0	—
Simplex SC/UPC to SC/APC	55/65 dB	3.0mm	492191-1	492191-3	492191-5	1-492191-0	1-492191-5
Single-Fiber Pigtails							
Simplex SC/APC	65 dB	3.0mm	492193-1	492193-3	492193-5	1-492193-0	1-492193-5
	55 dB	3.0mm	492081-1	492081-3	492081-5	1-492081-0	1-492081-5
Simplex SC/UPC	55 dB	2.0mm	1278242-1	1278242-3	1278242-5	1-1278242-0	1-1278242-5
	55 dB	900µm	492065-1	492065-3	492065-5	1-492065-0	1-492065-5
Two-Fiber Jumpers — Zipcord							
Duplex SC/UPC to Duplex SC/UPC	55 dB	3.0mm	492019-1	492019-3	492019-4	492019-5	492019-6
(2) Simplex SC/UPC to (2) Simplex SC/UPC	55 dB	3.0mm	492207-1	492207-3	492207-5	1-492207-0	1-492207-5

All cable OFNR (Riser).

Typical Insertion Loss
SC Connector on Singlemode Fiber at 1300 nm



Number of readings: 100
Average reading: 0.20 dB

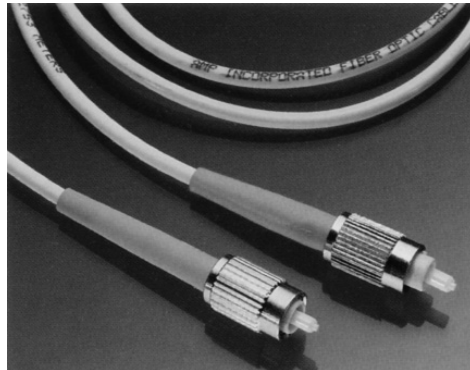
© Copyright 2004 by Tyco Electronics Corporation. All Rights Reserved. Dimensions are in millimeters with inches in brackets unless otherwise specified. Dimensions are shown for reference purposes only.

SC & FC Singlemode Cable Assemblies (Continued)

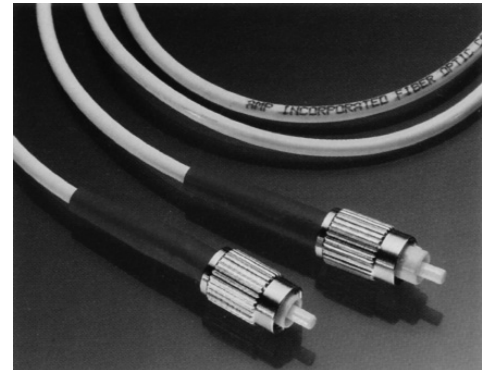
FC-FC Style Cable Assemblies

Product Facts

- Composite body w/ ceramic ferrule
- Compliant with:
 - JIS C-5970
 - IEC 1754-13-1
 - TIA 504.4 (FOCIS-4)
- Insertion Loss:
 - 0.2 dB typical
 - 0.5 dB maximum



FC/APC Connectors

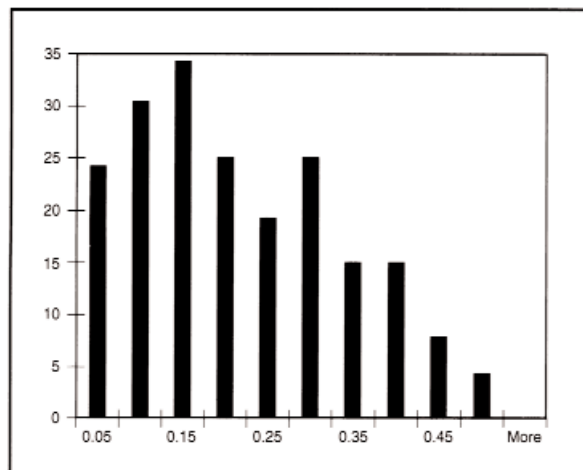


FC/UPC to FC/UPC Cable Assembly

Description	Min. Return Loss	Cable Diameter	Part Numbers				
			Length (m)				
			1	3	5	10	15
Single-Fiber Jumpers							
Simplex FC/APC to FC/APC	65 dB	3.0mm	492187-1	492187-3	492187-5	1-492187-0	1-492187-5
	65 dB	900µm	503868-1	503868-3	503868-5	—	—
Simplex FC/UPC to FC/UPC	55 dB	3.0mm	492014-1	492014-3	492014-4	492014-5	492014-6
	55 dB	2.0mm	1278240-1	1278240-3	1278240-5	1-1278240-0	1-1278240-5
	55 dB	900µm	492230-1	492230-3	492230-5	1-492230-0	—
Simplex FC/UPC to FC/APC	55/65 dB	3.0mm	492190-1	492190-3	492190-5	1-492190-0	1-492190-5
Single-Fiber Pigtailed							
Simplex FC/APC	65 dB	3.0mm	492192-1	492192-3	492192-5	1-492192-0	1-492192-5
	55 dB	3.0mm	492194-1	492194-3	492194-5	1-492194-0	1-492194-5
Simplex FC/UPC	55 dB	2.0mm	1278244-1	1278244-3	1278244-5	1-1278244-0	1-1278244-5
	55 dB	900µm	1278247-1	1278247-3	1278247-5	1-1278247-0	1-1278247-5
Two-Fiber Jumpers — Zipcord							
(2) Simplex FC/UPC to (2) Simplex FC/UPC	55 dB	3.0mm	492022-1	492022-3	492022-4	492022-5	492022-6

All cable OFNR (Riser).

Typical Insertion Loss
FC Connector on Singlemode Fiber at 1300 nm



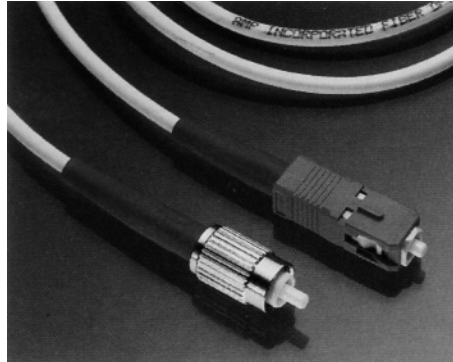
Number of readings: 200
Average reading: 0.20 dB

© Copyright 2004 by Tyco Electronics. All Rights Reserved. AMP and Tyco are trademarks. Dimensions are in millimeters with inches in brackets. Other products, logos, and Company names mentioned herein may be trademarks of their respective owners.

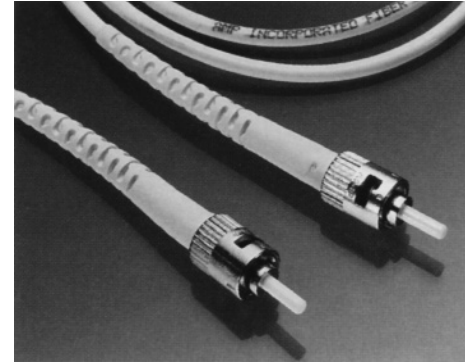
For drawings, technical data or samples, contact your Tyco Electronics sales engineer, call 1-800-522-6752, or visit our Website at: <http://www.tycoelectronics.com/fiberoptics>. Specifications subject to change. Consult Tyco Electronics for latest specifications.

SC & FC Singlemode Cable Assemblies (Continued)

Hybrid FC/SC and Other Cable Assemblies



FC/UPC to SC/UPC Cable Assembly



ST/UPC Cable Assembly

Description	Min. Return Loss	Part Numbers				
		Length (m)				
		1	3	5	10	15
Stocked Assemblies (FC/SC Hybrid)						
Simplex FC/APC to SC/APC	65 dB	492189-1	492189-3	492189-5	1-492189-0	1-492189-5
Simplex FC/UPC to SC/UPC	55 dB	492017-1	492017-3	492017-4	492017-5	492017-6
Other Simplex Assemblies						
Simplex SC/ST	55 dB	492016-1	492016-3	492016-4	492016-5	492016-6
Simplex FC/ST	55 dB	492018-1	492018-3	492018-4	492018-5	492018-6
Simplex ST/ST	55 dB	502796-1	502796-3	502796-5	1-502796-0	1-502796-1
Other Duplex Assemblies						
SC Duplex/FC	55 dB	492021-1	492021-3	492021-4	492021-5	492021-6
SC Duplex/ST Style	55 dB	492020-1	492020-3	492020-4	492020-5	492020-6
ST/ST Style	55 dB	503162-1	503162-3	503162-5	1-503162-0	1-503162-1

Insertion Loss: 0.5 dB Max., 0.2 dB Typical, when measured against a Reference Lead.
All cable 3mm OFNR (Riser).