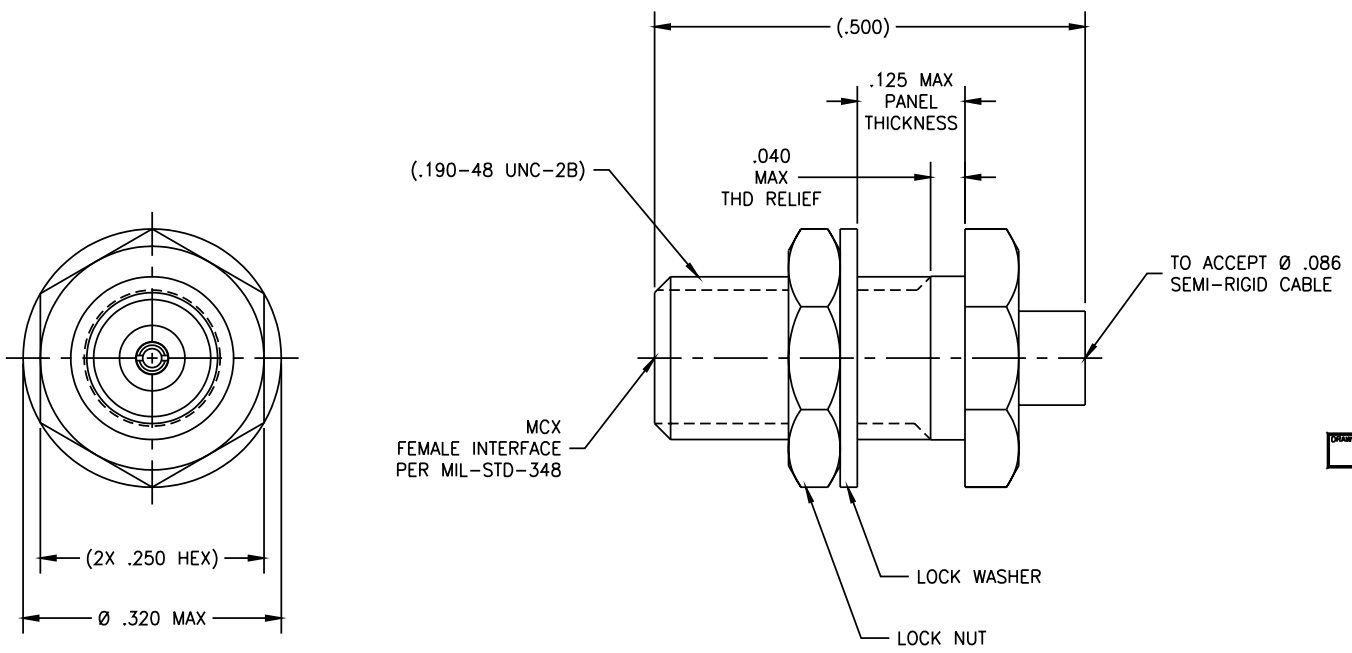


4 3 2 1

REVISIONS				
ZONE	REV	DESCRIPTION	DATE	BY
-	-	-	-	-



DRAWING NO. 3-M097-716-11 REV. -

NOTE(S):

1. MATERIAL(S):
  - 1.1 BODY & LOCKNUT: BRASS PER ASTM B16 OR UNS C36000.
  - 1.2 CENTER CONDUCTOR: BeCu ALLOY PER ASTM B-196.
  - 1.3 LOCKWASHER: PHOSPHOR BRONZE ALLOY PER ASTM B-139 OR QQ-B-750.
  - 1.4 INSULATOR: PTFE PER ASTM D-1710.
2. FINISH(ES):
  - 2.1 BODY, CENTER CONDUCTOR, LOCKNUT AND LOCKWASHER: GOLD PLATED PER ASTM B-488 OVER NICKEL UNDERPLATE PER AMS-QQ-N-290.
  - 2.4 INSULATOR : NONE

**NOTICE**  
 THIS DRAWING EMBODIES A CONFIDENTIAL PROPRIETARY DESIGN ORIGINATED BY TENSOLITE COMPANY AND ALL DESIGN, MANUFACTURING, REPRODUCTION, USE AND SALE RIGHTS REGARDING THE SAME ARE EXPRESSLY RESERVED. IT IS SUBMITTED UNDER A CONFIDENTIAL RELATIONSHIP FOR A SPECIFIED PURPOSE AND THE RECIPIENT AGREES BY ACCEPTING THIS DRAWING, NOT TO SUPPLY OR DISCLOSE ANY INFORMATION REGARDING IT TO ANY UNAUTHORIZED PERSON TO INCORPORATE IN OTHER PRODUCTS ANY SPECIAL FEATURES PECULIAR TO THIS DESIGN. ALL PATENT RIGHTS HERETO ARE EXPRESSLY RESERVED BY TENSOLITE COMPANY, LONG BEACH, CALIFORNIA 90815.

TOLERANCES AND NOTES EXCEPT AS NOTED		SEE NOTE(S)		SEE NOTE(S)		SEE NOTE(S)	
DIMENSIONS ARE IN INCHES		MATERIAL		SIZE		SPECIFICATION	
LINEAR .XX ±.010 HOLE DIA ±.005 FRACTION 1/32		NEXT ASSY		APPROVAL INITIALS		DATE	
1. MACHINE FINISH: .63/RMS		DRAWN BY AGS		DATE 05.19.03		SCALE 10:1	
2. BREAK ALL SHARP EDGES .005 MAX.		CHECKED		QUALITY		SUB-DIRECTORY/FILENAME	
3. MACHINED FILLETS: .005 MAX.		ENGINEERING ATV		DATE 05.19.03		SHEET 1 OF 1	
4. MACHINED SURFACES: SQUARE TO RESPECTIVE AXIS WITHIN .005 INCHES PER INCH.		APPROVED		DATE		DRAWING NO.	
5. MACHINED DIAMETERS CONCENTRIC WITHIN .002 I.R.		DATE		DATE		3-M097-716-11	
6. DIMENSIONS TO BE MET BEFORE PLATING.		DATE		DATE		REV. -	
7. CHAMFER ALL THREADS 45°.		DATE		DATE		REV. -	
8. THREADS PER H-38		DATE		DATE		REV. -	
9. REMOVE FINISHED EDGES ON TEFLON.		DATE		DATE		REV. -	
10. REMOVE ALL BURRS.		DATE		DATE		REV. -	

4 3 2 1