
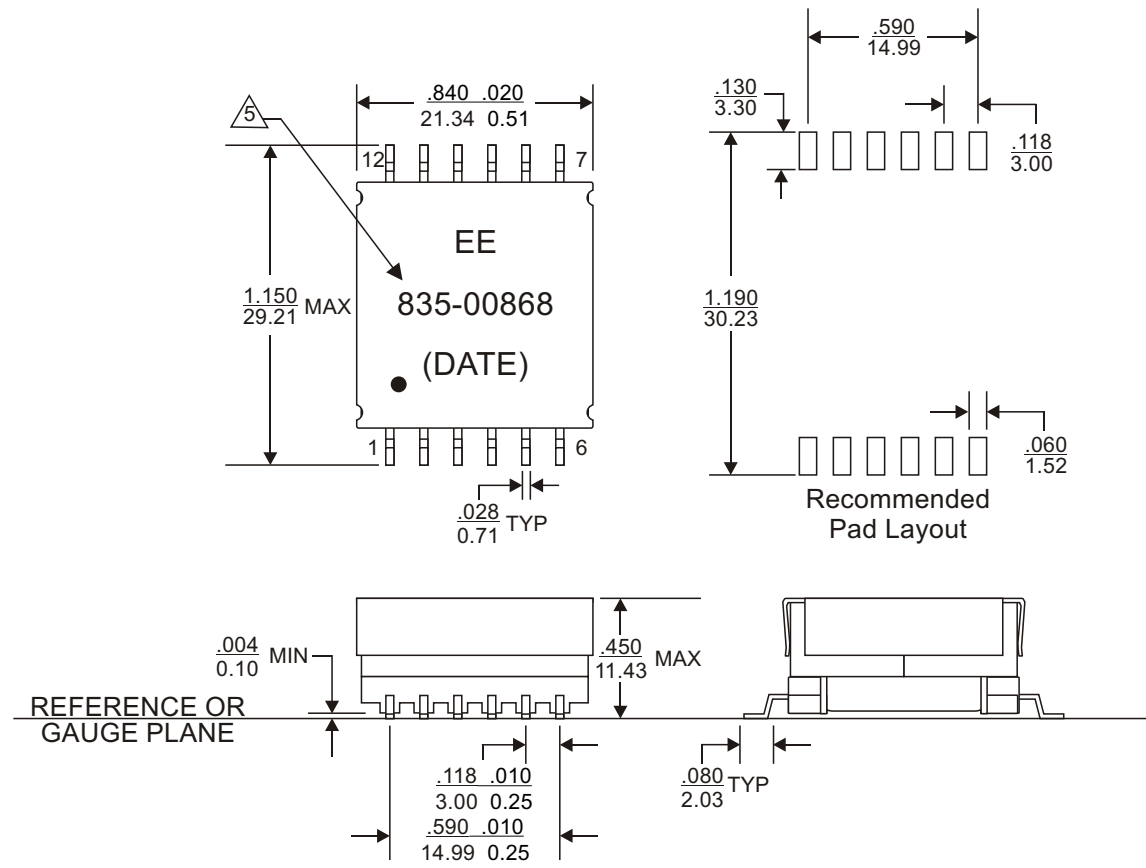


REVISIONS			
REV.	DESCRIPTION	ECN NO.	DATE
01	FIRST RELEASE	N/A	06/21/07
02	UPDATE DRAWING	EE13291	11/23/11

**PAGE 4 IS FOR INTERNAL ONLY**

PART NUMBER		PART DESCRIPTION		TITLE										
835-00868		Standard version, with Lead(Pb)		TRANSFORMER, SMT, 12 PIN										
835-00868F		RoHS compliant per EU Directive 2002/95/EC(without exemption of solder content)												
<p align="center"><b><u>WARNING !</u></b></p> <p>ALL SHEETS OF THIS DOCUMENT ARE CONTROLLED DOCUMENTATION AND ARE NOT TO BE RELEASED OUTSIDE OF E&amp;E OR ITS SUB-CONTRACTORS WITHOUT AUTHORIZATION.</p>	<p>UNLESS OTHERWISE SPECIFIED, DIMENSIONS ARE IN INCH/mm.</p> <p align="center"><u>TOLERANCE ARE:</u></p> <table border="0"> <tr> <td><u>INCH</u></td> <td><u>mm</u></td> <td><u>ANGLE</u></td> </tr> <tr> <td>.XXX .005 .XX .13 X.X 0.3</td> <td></td> <td></td> </tr> <tr> <td>.XX .02 .X .5 X. 1</td> <td></td> <td></td> </tr> </table>	<u>INCH</u>	<u>mm</u>	<u>ANGLE</u>	.XXX .005 .XX .13 X.X 0.3			.XX .02 .X .5 X. 1			APPROVALS		DATE	
		<u>INCH</u>	<u>mm</u>	<u>ANGLE</u>										
		.XXX .005 .XX .13 X.X 0.3												
		.XX .02 .X .5 X. 1												
		DRAWN BY		F. W. NIE		11/23/11								
PROJ. ENG		J. P. AI		11/23/11										
APPROVED BY		V. TSUI		11/23/11										
Q.A.		C.M. TSUI		11/23/11										
 E & E Magnetic Products Ltd.				DRAWING NO./MODEL										
				835-00868										
				SCALE	REV									
				DO NOT SCALE	02									
				PAGE	OF									
				1	4									



## MECHANICAL OUTLINE

1. Dimension are specified in  $\frac{\text{inches}}{\text{mm}}$  with higher precedence in inches.
2. Unless otherwise specified, all tolerances are  $\frac{.010}{0.25}$ .
3. Coplanarity:  $\frac{.006}{0.15}$  max.
4. "(DATE)" includes at least the manufacturing date code(in YYWW format) plus two character country code.
5. For RoHS compliant version, 835-00868F, the part will be marked with "835-00868F", instead of "835-00868".



E & E Magnetic Products Ltd.

DRAWING NO./MODEL

835-00868

REV

02

SCALE

DO NOT SCALE

PAGE

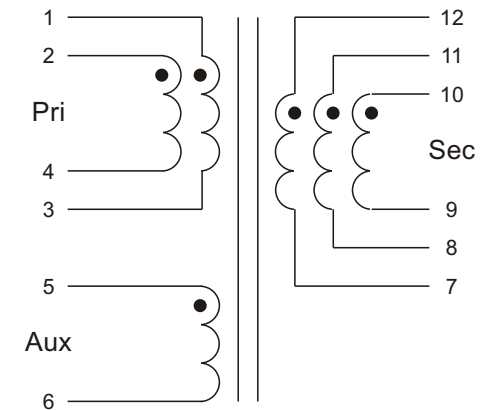
2

OF

4

### ELECTRICAL SPECIFICATION @25 C:

PARAMETERS	UNIT	LIMITS
Turns Ratio(Pri):(Sec):(Aux)	-	1 : 0.56 : 0.33 5%
Polarity	-	Per Schematic
Inductance, Ls(Pri)@250kHz, 0.7Vrms, 0A <sub>dc</sub>	uH	42 10%
Inductance, Ls(Pri)@250kHz, 0.7Vrms, 2.6A <sub>dc</sub>	uH	37.8 Min
LL(Pri), short Sec@250kHz, 0.7Vrms	uH	0.430 Max
DCR(Pri)		0.060 Max
DCR(Sec)		0.037 Max
DCR(Aux)		0.195 Max
HIPOT(Pri):(Sec)	Vrms	1500 Min



**SCHEMATIC**

- Operating temperature range: -40 C to +125 C. The part temperature (ambient temperature + temperature rise) should not exceed the upper limit of the operating temperature under worst case operating conditions. Circuit design, component placement, PWB trace size and thickness, airflow and other cooling provisions all affect the part temperature. Part temperature should be verified in the end application.
- Peak primary current, 2.6A, is drawn at minimum input voltage.
- The transformer is designed for a 250kHz switching frequency with an input of 36-72 volts. Output of the auxiliary winding is 12V, 0.1A. Output of the secondary winding is 19.5V, 1.5A.
- DCR is with the windings connected in parallel. Turns ratio is with the primary and the secondary windings connected in parallel.



E & E Magnetic Products Ltd.

DRAWING NO./MODEL

835-00868

REV

02

SCALE

DO NOT SCALE

PAGE

3

OF

4