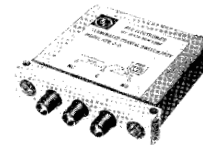


Terminated SPDT Coaxial Switches



This RLC Electronics' Terminated Single Pole, Two Position Coaxial Switch provides proven reliability, long life and excellent electrical performance. It features extremely low insertion loss and VSWR over the entire DC-18GHz range while maintaining

high isolation. Standard RF power rating is 2 watts cw limited by the termination. Terminations can be provided in either an internal or external configuration, or can be replaced by SMA connectors for special applications.

Specifications

STR-2¹⁻²⁻³⁻⁴

Switch Type	SINGLE POLE TWO POSITION		
Frequency Range	DC-18GHz (usable to 26 GHz)		
	DC-4.0	4.0-12.4	12.4-18.0
Insertion Loss (Max dB)	0.1	0.2	0.3
VSWR (Max)	1.2	1.3	1.5
Isolation (dB Min)	80	70	60

Power Rating, RF Cold Switching: 2 watts average
Impedance: 50 Ohms/75 Ohms.*

Operating Power 25°C:

(Failsafe): 12Vdc at 510 ma nom.

28Vdc at 280 ma nom.

115 Vac at 50 ma nom.

(Latching): 12 Vdc at 470 ma nom. 28 Vdc at 300 ma nom. Current applied 10 ms min.cutthroat circuitry(standard), recovery time 100 ms nom.

Connectors, RF: SMA, Female

Connectors, Power: Feed through solder lugs.

Life: 1,000,000 operations.

Switching Time: 25 mS Max.

Weight: 4 oz.

Environmental Conditions: MIL-S-3928

Operating Mode: failsafe or latching.

Switching Sequence: Break before make.

*75 ohm up to 3 GHz.

To designate the switch desired use:

(1) "A" for 115 Vac, "D" for 28 Vdc or "H" for 12 Vdc.

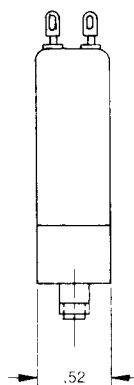
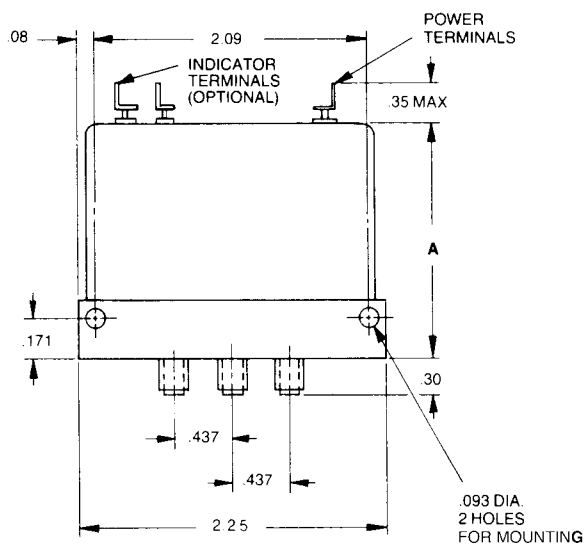
(2) "I" for indicators if desired.

(3) "L" for latching cutthroat if desired.

(4) "TL" for TTL Driver if desired

Example: STR-2-D is a SP2T, 28 Vdc; without indicators, Failsafe switch 50 ohms for 75 ohms STR75-2-

Outline Drawing



OPERATING MODE	A
STR-2-D	2.10
STR-2-D-L	2.28
STR-2-H-I-L-TL	2.75

Tolerances unless otherwise specified are: .xx, ± .02; .xxx, ± .005.

