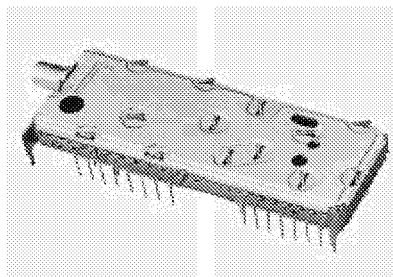


Type : **CT10DS**

Part No.: **ENA4**□0□□□□

Type CT10DS (Double Conversion), high performance for digital/analog Hybrid transmission receiver.



Features

- Low profile / Compact size, Best fit on PC board
- Vertical / Horizontal mounting type
- Low power consumption
- Built-in upstream/downstream data filter circuit

Recommended Applications

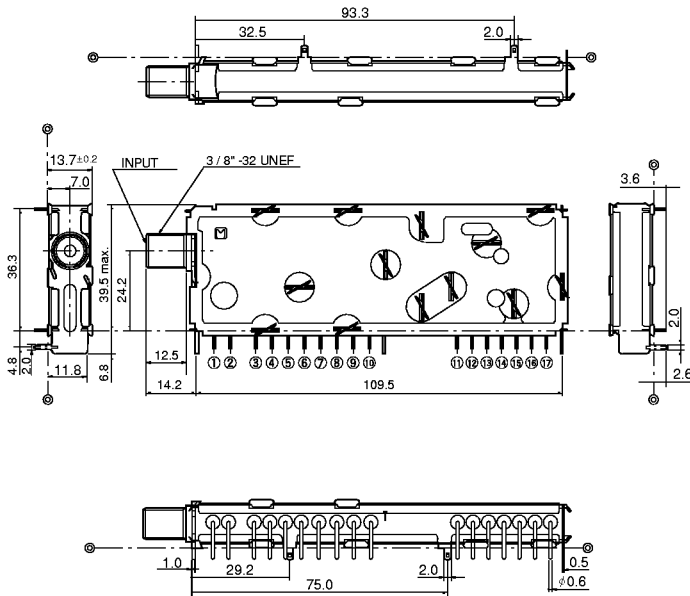
- CATV Set Top Box for digital and analog Hybrid transmission, Cable modem

■ Performance Specifications, Summary

	U.S.A. Channel	Europe Channel	Japan Channel
1. RF Input Frequency	54 to 860 MHz	48 to 860 MHz	90 to 770 MHz
2. RF Input Level	- 15 to + 15 dBmV		
3. RF Input Impedance	75 Ω Unbalanced		
4. PLL Interface	3 wire		
5. Output Frequency (Analog / Digital)	45.75 MHz / 44 MHz	38.9 MHz / 36.15 MHz	58.75 MHz / 57 MHz
6. Gain	35 dB typ.		
7. Power Supply	+ 5 V : 80 mA typ. 100 mA max. + 9 V : 200 mA typ. 250 mA max.		
8. Noise Figure	10 dB max.		
9. Phase Noise	- 80 dBc / Hz @10 kHz offset		
10. Tuning Voltage	0.7 to 28 V		
11. AGC Range	0 to - 20 dB		

■ Dimensions in mm (not to scale)

● CT10DS



■ TERMINAL SUPPLY VOLTAGE

No.	Term. Name	Supply Voltage
1	Up Stream	—
2	Down Stream	—
3	BTL	+ 30.0 V
4	ENABLE 1st	—
5	DATA 1st	—
6	CLOCK 1st	—
7	Fref OUT	—
8	BP	+ 5.0 V
9	AGC	+ 0.5 to + 7.0 V
10	+ B	+ 9.0 V
11	OUT PUT	—
12	BP	+ 5.0 V
13	+ B	+ 9.0 V
14	ENABLE 2nd	—
15	DATA 2nd	—
16	CLOCK 2nd	—
17	Fref IN	—

■ Block Diagram (CT10DS)

