



Electric Double Layer Capacitor

(EDLC/Super Capacitor)

EDLC041720 Series

EDLC041720-050-2F-13	5mF
EDLC041720-100-2F-13	10mF
EDLC041720-150-2F-13	15mF

Caution

**The products in this catalog will be or have been
stopped production**

Discontinue Issue Date

Dec. 14, 2022

Electric Double Layer Capacitor (EDLC/Super Capacitor)

Product compatible with RoHS directive

Overview of EDLC041720 Series

FEATURES

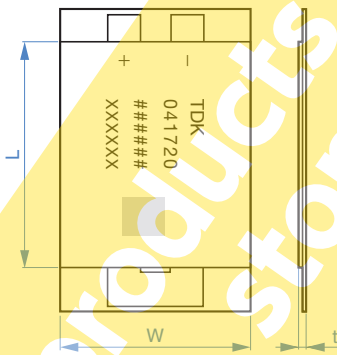
- High capacitance and low impedance.
- Very thin small size.
- High bending strength.
- Long-life.
- Clean materials.
- safety
- Compliant with ISO standards (dimensions, bending, torsion tests)

APPLICATION

- Secondary power supply it has built-in in an IC card
- Storage element of energy harvesting

PART NUMBER CONSTRUCTION

EDLC	04	17	20	-	050	-	2F	-	13
Series name	Thickness dimensionst	Width dimensions W	Vertical dimensions L		Data capacity (mF)		Number of series and voltage		Impedance
					050	5			
					100	10			
					150	15			

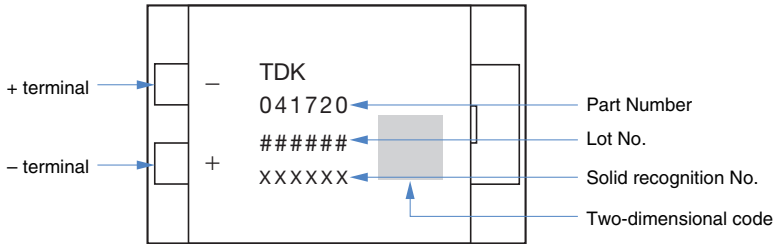


RoHS Directive Compliant Product: See the following for more details.<https://product.tdk.com/info/en/environment/rohs/index.html>

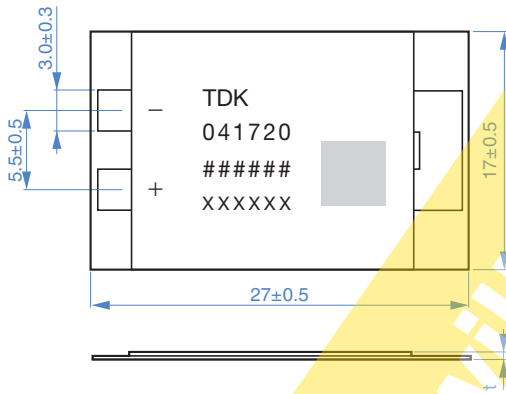
⚠ Please be sure to request delivery specifications that provide further details on the features and specifications of the products for proper and safe use. Please note that the contents may change without any prior notice due to reasons such as upgrading.

EDLC041720 Series

PRODUCT INDICATION



SHAPE & DIMENSIONS

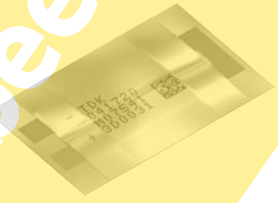



Capacitance	t
5mF	0.45max.
10mF	0.50max.
15mF	0.50max.

Dimensions in mm

Not suitable to connect by soldering. Recommend to connect by anisotropic conductive materials (film, paste etc.)

The products will be or have been stopped production



 Please be sure to request delivery specifications that provide further details on the features and specifications of the products for proper and safe use. Please note that the contents may change without any prior notice due to reasons such as upgrading.

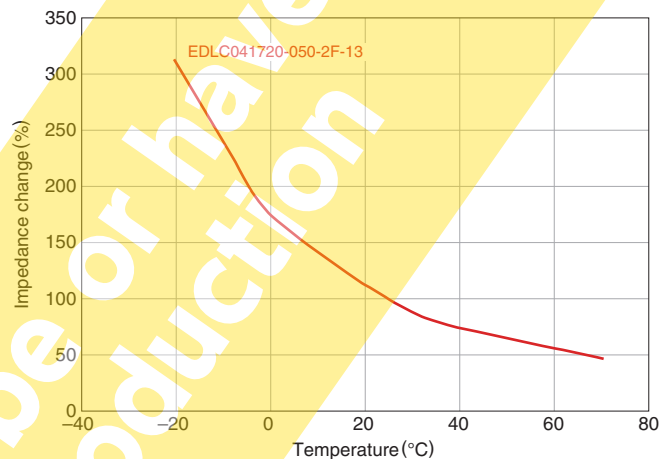
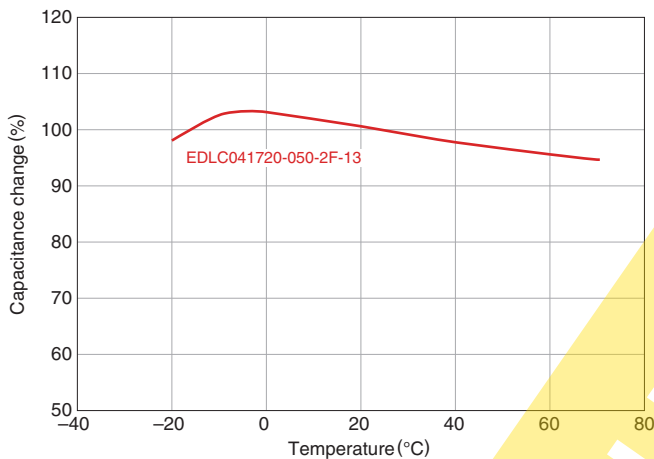
EDLC041720 Series

ELECTRICAL CHARACTERISTICS

CHARACTERISTICS SPECIFICATION TABLES

Part No.	Nominal capacitance	Nominal Impedance [AC 1kHz] (Ω)typ.	Operating voltage	
	(mF)typ.		continuous (V)	peak (V)
EDLC041720-050-2F-13	5	7	3.2	5.0
EDLC041720-100-2F-13	10			
EDLC041720-150-2F-13	15			

EXAMPLE OF THERMAL CHARACTERISTICS



- The graph of THERMAL CHARACTERISTICS mentioned above shows the typical behavior of the product, and does not show the guarantee values.
- It is a value for standard temperature 25°C.

TEMPERATURE RANGE

Part No.	Temperature range	
	Operating temperature (°C)	Storage temperature (°C)
EDLC041720-050-2F-13	-20 to +60°C	-20 to +60°C
EDLC041720-100-2F-13		
EDLC041720-150-2F-13		