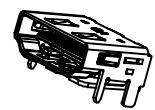
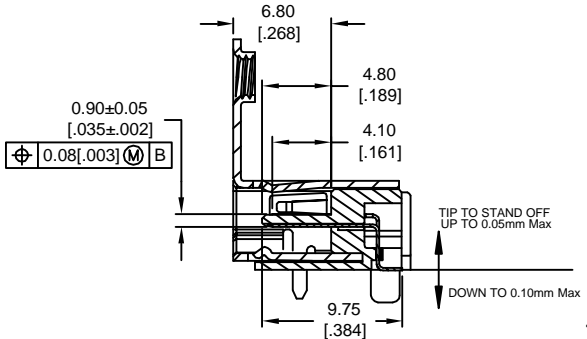
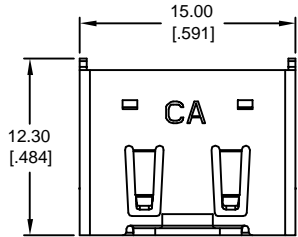


PART NO. CA-19HMSR-X-3XXXX

REVISIONS				
LTR	DESCRIPTION	DATE	APPROVED	
A	INITIAL RELEASE SEE DO 5811	CP 07-11-05	L.F.	
B	SEE DO 5843	CP 08-12-05	A.J.	
C	SEE DO 5981	CP 02-21-06	L.F.	
D	SEE DO 7118	CP 07-05-11	I.M.	
E	SEE DO 7173	CP 02-20-12	I.M.	

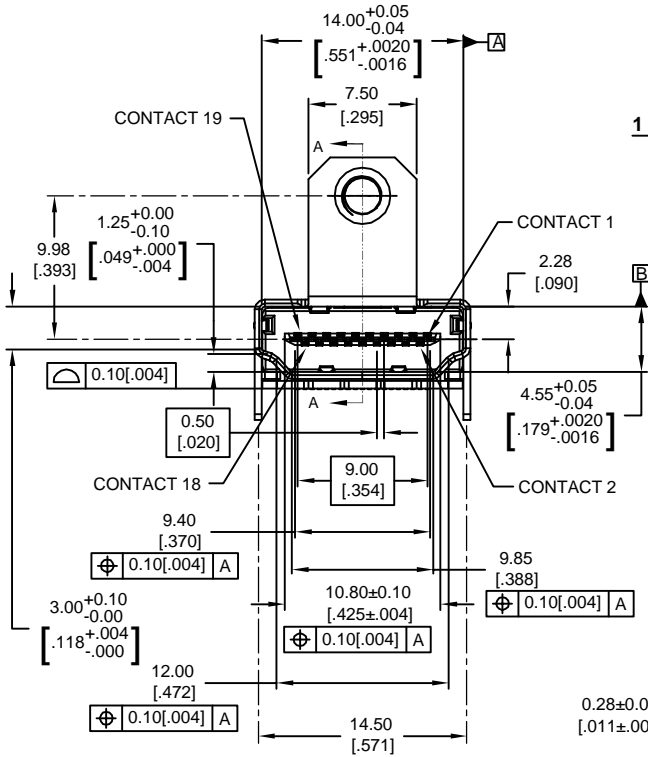
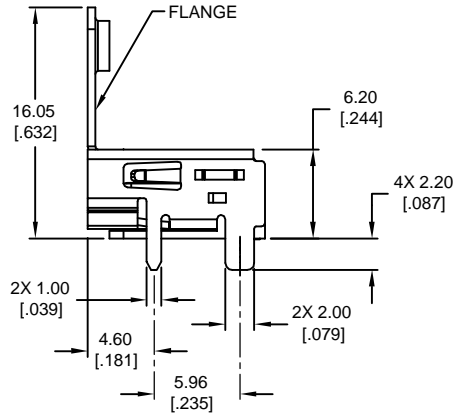


19HMSR-X-301
THRU HOLE PCB RETENTION
WITHOUT FLANGE



19HMSR-X-311
THRU HOLE PCB RETENTION
WITH FLANGE

SECTION A-A
1 = THRU HOLE PCB RETENTION



ORDERING NOMENCLATURE :
CA-19HMSR-X-3 X X XX

NO OF POS.
19 = HDMI TYPE 'A'

HDMI SOCKET

RIGHT ANGLE

CONTACT PLATING

C = .00038 [.000015] Au
F = .00076 [.000030] Au

TAIL TYPE

3 = SURFACE MOUNT (SMT)

MOUNTING FLANGE

0 = NO FLANGE
1 = WITH FLANGE

PCB RETENTION

1 = THROUGH HOLE
2 = SURFACE MOUNTING (SMT)
3 = FORKLOCK

PACKAGING METHOD

BLANK = TRAY
T = TAPE & REEL (WITH MYLAR)
TO = TAPE & REEL (WITHOUT MYLAR)
(SEE SHT 4 OF 4 FOR DETAIL)

1. MATERIAL:
- INSULATOR : LCP 30 % GLASS FILLED, COLOR BLACK
 - CONTACT : PHOSPHOR BRONZE, C5191R-H, THICKNESS : 0.20±0.01[.008±.0004]
 - CONTACT PLATING :
 - CONTACT AREA : SEE ORDERING NOMENCLATURE
 - SOLDER AREA : .00190 [.000075] TIN MIN.
 - UNDER PLATE : .00127 [.000050] NICKEL MIN.
 - SHELL : PHOSPHOR BRONZE, THICKNESS : 0.50 ±0.01[.02±.0004]
 - SHELL PLATING : .00254 [.000100] NICKEL MIN. OVER .00127 [.000050] COPPER

NOTES : UNLESS OTHERWISE SPECIFIED

DIMENSIONS ARE IN MILLIMETERS TOLERANCES ARE:		APPROVALS		DATE
DECIMALS	ANGLES	DRAWN		8-28-06
X ± .25	± 3°	CUONG P.		
XX ± .13		CHECKED		8-28-06
		LEROY FONG		

THE INFORMATION AND DESIGN DISCLOSED HEREIN WAS ORIGINATED BY AND IS THE PROPERTY OF CIRCUIT ASSEMBLY CORPORATION. CIRCUIT ASSEMBLY CORPORATION RESERVES ALL PATENT, PROPRIETARY, DESIGN, MANUFACTURING, REPRODUCTION, USE AND SALES RIGHTS THEREOF, AND TO ANY ARTICLES DISCLOSED HEREIN EXCEPT TO THE EXTENT RIGHTS ARE EXPRESSLY GRANTED TO OTHERS. THE FOREGOING DOES NOT APPLY TO VENDOR PROPRIETARY RIGHTS.

CA CIRCUIT ASSEMBLY CORP.			
18 THOMAS ST., IRVINE, CALIFORNIA 92618-2777			
CONNECTOR ASSEMBLY - HDMI SERIES			
19 POS., SOCKET, R/A, SMT, 'A' TYPE			
SIZE	CODE IDENT NO.	DRAWING NO.	REV.
C	52072	610320	E
SCALE: 4 : 1		SHEET 1 OF 4	

RECOMMENDED PCB LAYOUT
COMPONENT SIDE SHOWN,
PCB THICKNESS : 1.6 [062]

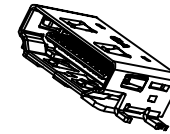
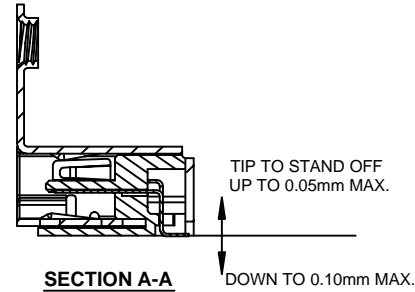
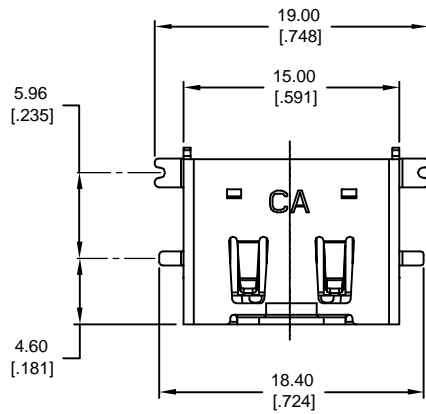
4

3

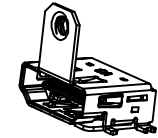
2

1

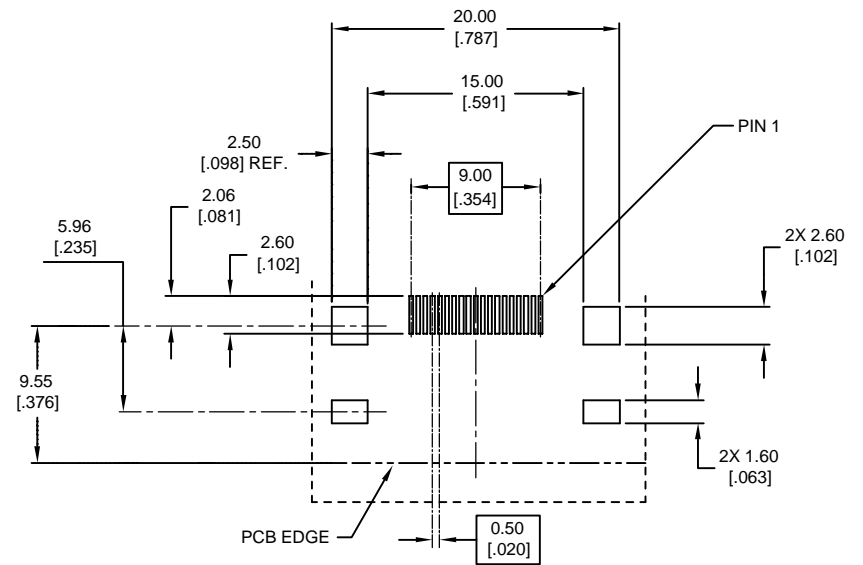
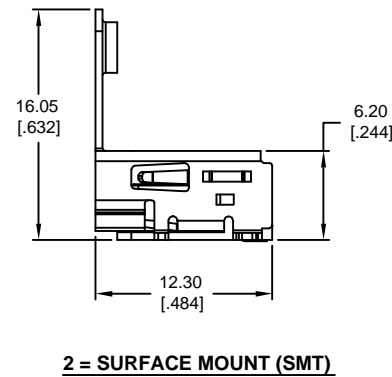
REVISIONS			
LTR	DESCRIPTION	DATE	APPROVED
	SEE SHEET 1 OF 4		



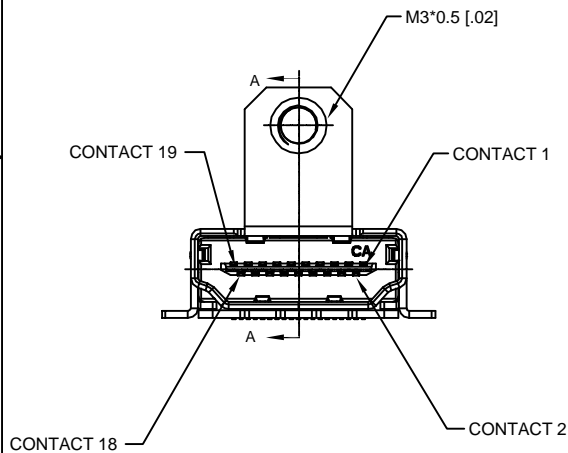
19HMSR-X-302
SMT PCB RETENTION
WITHOUT FLANGE



19HMSR-X-312
SMT PCB RETENTION
WITH FLANGE



RECOMMENDED PCB LAYOUT
COMPONENT SIDE SHOWN
PCB THICKNESS : 1.6 [0.062]



DIMENSIONS ARE IN MILLIMETERS TOLERANCES ARE:		APPROVALS	DATE	CIRCUIT ASSEMBLY CORP. 18 THOMAS ST., IRVINE, CALIFORNIA 92618-2777			
DECIMALS	ANGLES	DRAWN	8-28-05				
X ± .25	±3°	CHECKED	8-28-05	CONNECTOR ASSEMBLY - HDMI SERIES 19 POS., SOCKET, R/A, SMT, 'A' TYPE			
XX ± .13		LERROY FONG					
DIMENSIONS IN BRACKETS [XXX] ARE INCHES		<small>THE INFORMATION AND DESIGN DISCLOSED HEREIN WAS ORIGINATED BY AND IS THE PROPERTY OF CIRCUIT ASSEMBLY CORPORATION. CIRCUIT ASSEMBLY CORPORATION RESERVES ALL PATENT, PROPRIETARY, DESIGN, MANUFACTURING, REPRODUCTION, USE AND SALES RIGHTS THEREFO, AND TO ANY ARTICLES DISCLOSED HEREIN EXCEPT TO THE EXTENT RIGHTS ARE EXPRESSLY GRANTED TO OTHERS. THE FOREGOING DOES NOT APPLY TO VENDOR PROPRIETARY RIGHTS.</small>		SIZE	CODE IDENT NO.	DRAWING NO.	REV.
DECIMALS	ANGLES	C	52072	610320	E		
XX ± .010	±3°	DO NOT SCALE DRAWING		SCALE: 4 : 1	SHEET 2 OF 4		

4

3

2

1

4

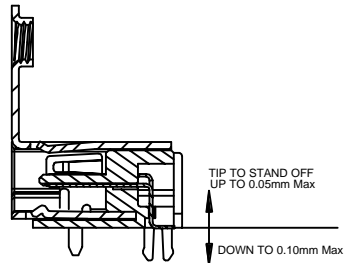
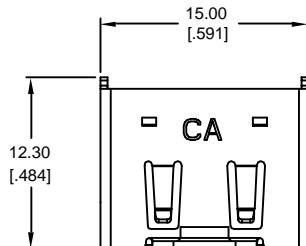
3

2

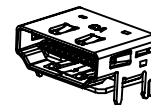
1

REVISIONS			
LTR	DESCRIPTION	DATE	APPROVED
	SEE SHEET 1 OF 4		

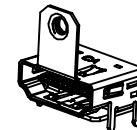
D



SECTION A-A

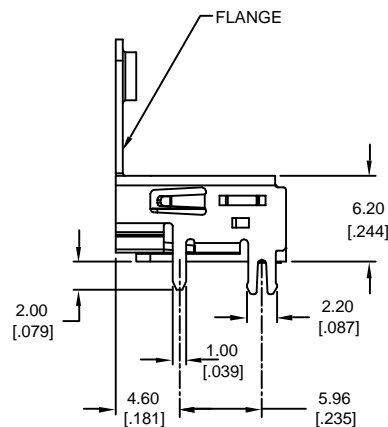
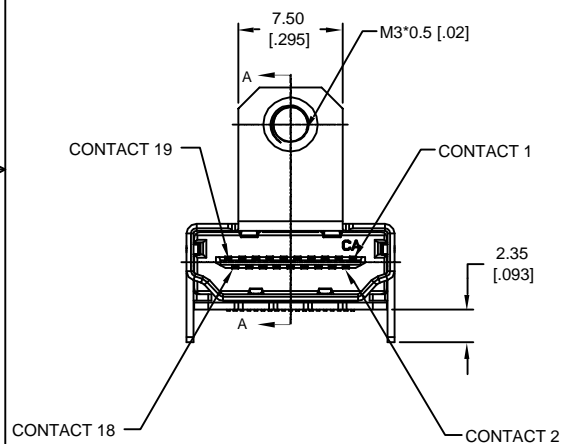


19HMSR-X-303
FORKLOCK PCB RETENTION
WITHOUT FLANGE

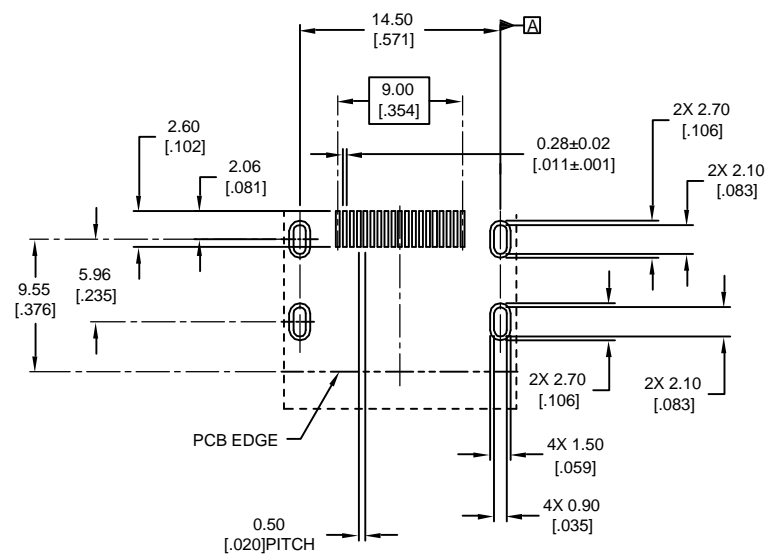


19HMSR-X-313
FORKLOCK PCB RETENTION
WITH FLANGE

C




3 = FORKLOCK PCB RETENTION



RECOMMENDED PCB LAYOUT
COMPONENT SIDE SHOWN
PCB THICKNESS : 1.6 [0.062]

B

A

DIMENSIONS ARE IN MILLIMETERS TOLERANCES ARE:		APPROVALS		DATE	 CIRCUIT ASSEMBLY CORP. 18 THOMAS ST., IRVINE, CALIFORNIA 92618-2777
DECIMALS	ANGLES	DRAWN CUONG P.		6-28-05	
X ±.25	±3°	CHECKED LEROY FONG		6-28-05	CONNECTOR ASSEMBLY - HDMI SERIES 19 POS., SOCKET, R/A, SMT, 'A' TYPE
.XX ±.13		<small>THE INFORMATION AND DESIGN DISCLOSED HEREIN WAS ORIGINATED BY AND IS THE PROPERTY OF CIRCUIT ASSEMBLY CORPORATION. CIRCUIT ASSEMBLY CORPORATION RESERVES ALL PATENT, PROPRIETARY, DESIGN, MANUFACTURING, REPRODUCTION, USE AND SALES RIGHTS THEREIN, AND TO ANY ARTICLE DISCLOSED HEREIN EXCEPT TO THE EXTENT RIGHTS ARE EXPRESSLY GRANTED TO OTHERS. THE FOREGOING DOES NOT APPLY TO VENDOR PROPRIETARY RIGHTS.</small>			
DIMENSIONS IN BRACKETS TOLERANCES ARE:		SIZE	CODE IDENT NO.	DRAWING NO.	REV.
DECIMALS	ANGLES	C	52072	610320	E
XX ±.010	±3°	SCALE: 4 : 1		SHEET 3 OF 4	
XXX ±.005		DO NOT SCALE DRAWING			

4

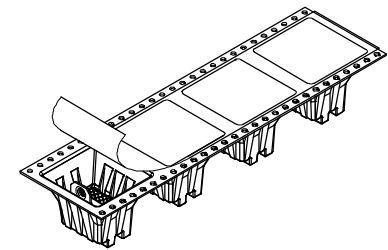
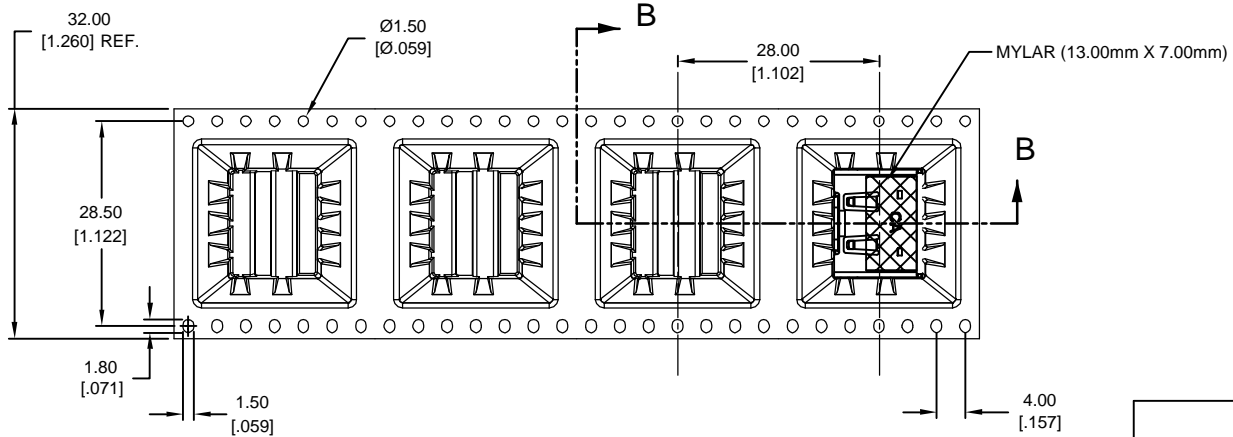
3

2

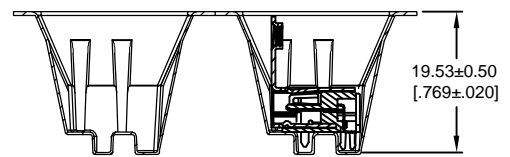
1

REVISIONS			
LTR	DESCRIPTION	DATE	APPROVED
	SEE SHEET 1 OF 4		

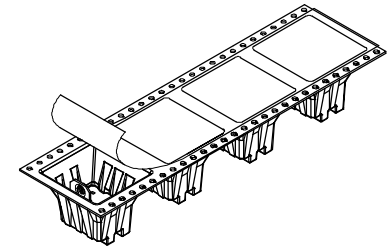
-T = TAPE & REEL FOR CONNECTOR WITH FLANGE (WITH MYLAR 13.00mm X 7.00mm)



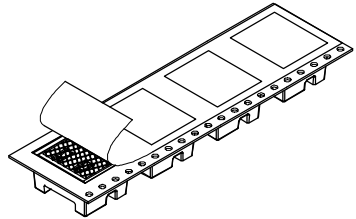
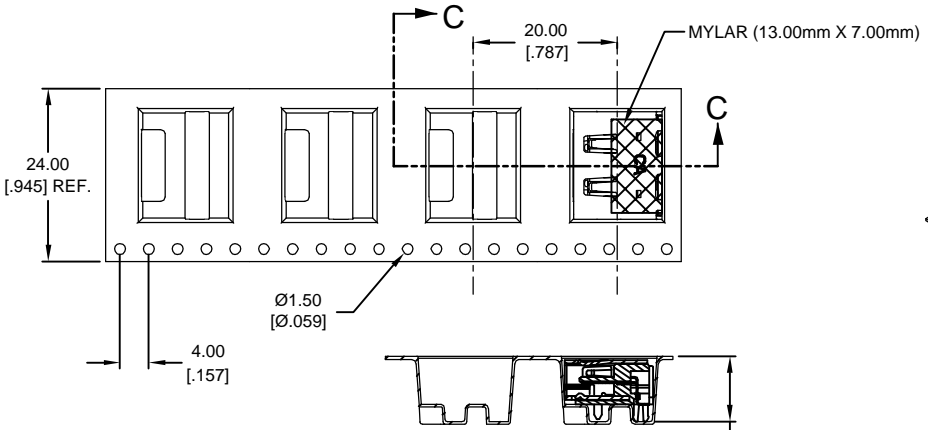
-TO = TAPE & REEL FOR CONNECTOR WITH FLANGE (WITHOUT MYLAR)



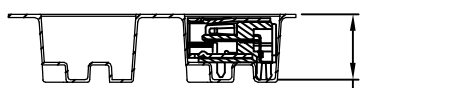
SECTION B-B
SCALE 2 : 1



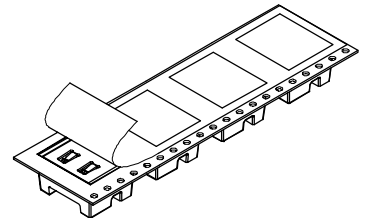
-T = TAPE & REEL FOR CONNECTOR WITHOUT FLANGE (WITH MYLAR: 13.00mm X 7.00mm)




-TO = TAPE & REEL FOR CONNECTOR WITHOUT FLANGE (WITHOUT MYLAR)



SECTION C-C
SCALE 2 : 1



DIMENSIONS ARE IN MILLIMETERS TOLERANCES ARE: DECIMALS ANGLES .X ±.25 ±3° .XX ±.13 DIMENSIONS IN BRACKETS [XXX] ARE INCHES TOLERANCES ARE: DECIMALS ANGLES .XX ±.010 ±3° .XXX ±.005	APPROVALS DRAWN CUONG P. 6-28-05 CHECKED LEROY FONG 6-28-05	DATE 6-28-05	 CIRCUIT ASSEMBLY CORP. 18 THOMAS ST., IRVINE, CALIFORNIA 92618-2777 CONNECTOR ASSEMBLY - HDMI SERIES 19 POS., SOCKET, R/A, SMT, 'A' TYPE	SIZE C	CODE IDENT NO. 52072	DRAWING NO. 610320	REV. E
	DO NOT SCALE DRAWING						

4

3

2

1