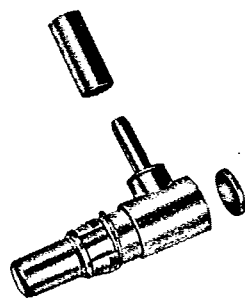


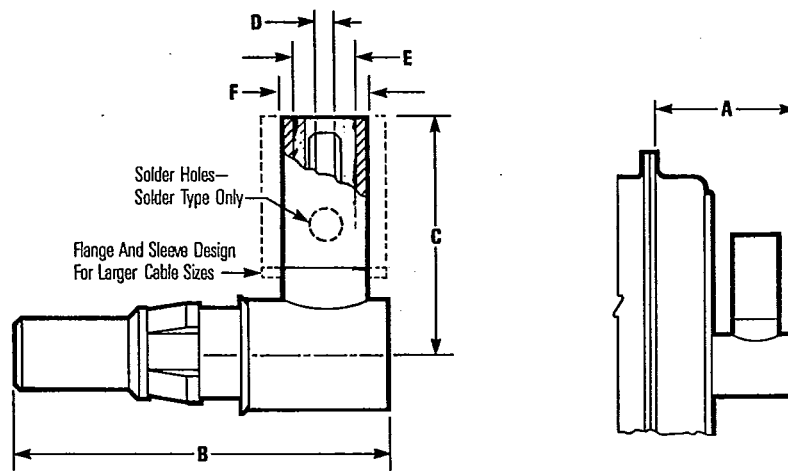
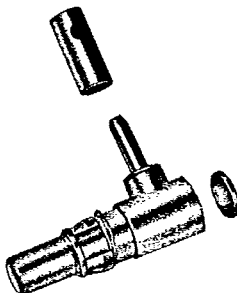
D-Subminiature Coaxial Contacts

Right Angle Plugs

Crimp Braid Contact



Solder Braid Contact



Photos are 1 1/2 x actual size

Ordering Information

Dimensions

Catalog Number Standard Plating	Military Plating	A		B		C		D		E		F		Use With RG Cable or Equivalent
		in	mm	in	mm	in	mm	in	mm	in	mm	in	mm	
Crimp Braid Contact														
CN0962-P01C1	CN0962-P01C2	.530	13.46	.734	18.64	.492	12.50	.040	1.02	.093	2.36	.120	3.05	RG 178 B/U
CN0962-P04C1	CN0962-P04C2	.530	13.46	.734	18.64	.492	12.50	.067	1.70	.120	3.05	.145	3.68	RG 179 B/U RG 316 B/U
CN0962-P07C1	CN0962-P07C2	.530	13.46	.734	18.64	.601	15.27	.110	2.79	.202	5.13	.235	5.97	RG 180 B/U
CN0962-P08C1	CN0962-P08C2	.530	13.46	.734	18.64	.601	15.27	.125	3.18	.202	5.13	.235	5.97	RG 58 B/U

Specials

CN0962-P01C2-01

Description for each of these right angle plugs can be determined by using the Part Number System explained on-page 12.

Catalog Number Standard Plating	Military Plating	A		B		C		D		E		F		Use With RG Cable or Equivalent
		in	mm	in	mm	in	mm	in	mm	in	mm	in	mm	
Solder Braid Contact														
CN0962-P01S1	CN0962-P01S2	.530	13.46	.734	18.64	.492	12.50	.040	1.02	.093	2.36	.125	3.18	RG 178 B/U
CN0962-P04S1	CN0962-P04S2	.530	13.46	.734	18.64	.492	12.50	.067	1.70	.125	3.18	.145	3.86	RG 179 B/U RG 316 B/U
CN0962-P07S1	CN0962-P07S2	.530	13.46	.734	18.64	.601	15.27	.110	2.79	.202	5.13	.235	5.97	RG 180 B/U
CN0962-P08S1	CN0962-P08S2	.530	13.46	.734	18.64	.601	15.27	.125	3.18	.202	5.13	.235	5.97	RG 58 B/U

Specials

CN0962-P02S1
CN0962-P04S1-05
CN0962-P01S13
CN0962-P01S14

CN0962-P01S17
CN0962-P01S1-02
CN0962-P01S8
CN0962-P04S8

CN0962-P04S15
CN0962-P04S2-05
CN0962-P02S17
CN0962-P01S15

Description for each of these right angle plugs can be determined by using the Part Number System explained on page 12.

Reverse Type Right Angle Plugs

The reverse type right angle plug has a plug outer shell but a pin inner contact. All other D-Subminiature features are the same as regular D-Subminiature Coax Contacts.

Description for each of these reverse contacts can be determined by using the Part Number System on page 12.

Catalog Number Reverse Type Rt. Angle Plugs
CN0962-RP07S1