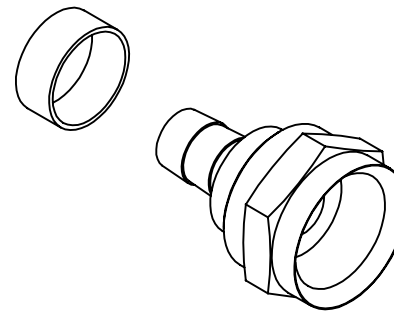
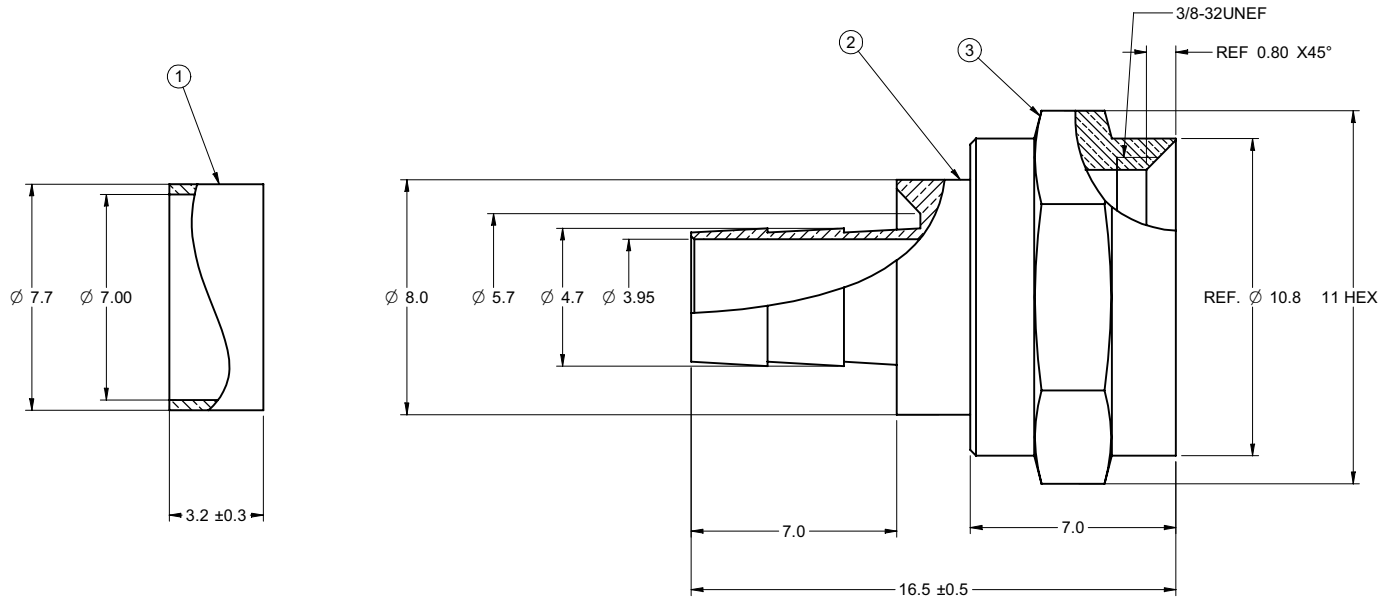


PART NUMBER	ITEM ① SLEEVE	ITEM ② BODY	ITEM ③ NUT
25-7000G	BRASS GOLD PLATED	BRASS GOLD PLATED	BRASS GOLD PLATED

受控 CONTROLLED DOCUMENT			
编号 P/N	25-7000G	版本 Rev	0C
日期 Rel'd Date	Mar 24,08		

DRAWING NO.
25-7000G

REVISIONS			
RELEASE FOR QUATION			
A	04-20-06	Y	W T
CHANGE OVERALL TOLERANCE AND ADD THRED CHAMFER DIM. AND 5&6 NOTES.			
B	12-18-06	L	Y T
UPDATE NOTES.			
C	07-03-07	Z	W T



NOTES:

TECHNICAL REQUIREMENT AND CABLE ASSEMBLY INSTRUCTION REFER TO EMERSON NET WORK POWER CONNECTIVITY SOLUTIONS DOUCUMENT P/N 25-0000.

THIS DRAWING TO BE INTERPRETED PER ANSI Y 14.5M - 1994

COMPANY CONFIDENTIAL

TOLERANCE UNLESS OTHERWISE SPECIFIED		DRAWN BY GARY.ZHG	DATE 07-03-07
DECIMALS	mm	CHECKED BY IVON.WANG	DATE 07-03-07
X	± 0.5	APPROVED BY THOMAS	DATE 08-07-07
X.X	± 0.2		
X.XX	± 0.1		
ANGLES	± 0.5°	U/M	mm

EMERSON Network Power		Connectivity Solutions	
TITLE GOLD F-59 W/SEPARATE 1/8 RING			
SHEET 1 OF 1	DRAWING NO. 25-7000G	SIZE C	

THIS DRAWING WAS PRODUCED BY COMPUTER, DO NOT SCALE DRAWING OR UPDATE MANUALLY.

Thomas Chow
2007-08-10
15:43:55 - 08'00'