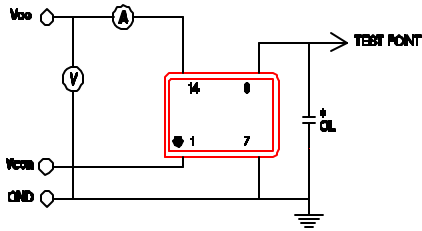
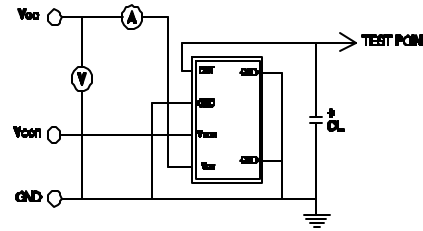


TV4 TCVCXO SERIES

Recommended Test Circuit for TV46 & 67



Recommended Test Circuit for TV48



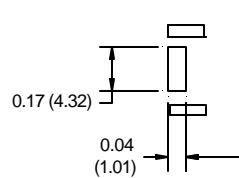
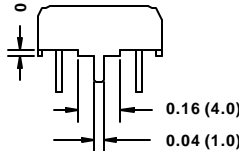
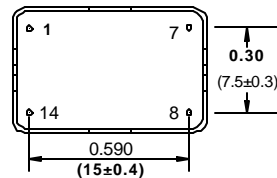
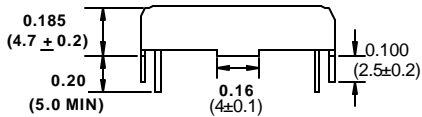
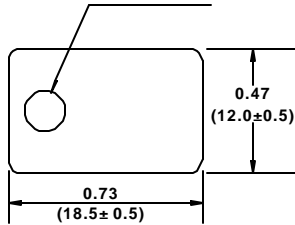
*CL (Capacitive Load): Includes the input capacitance of oscilloscope.

**Add a 20K resistor from output to gnd for Clipped Sine Wave version only (not needed for HCMOS version)

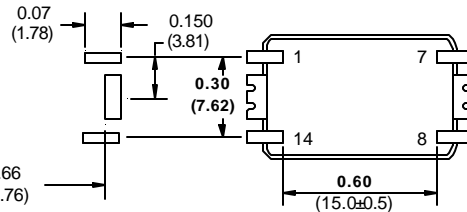
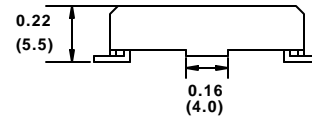
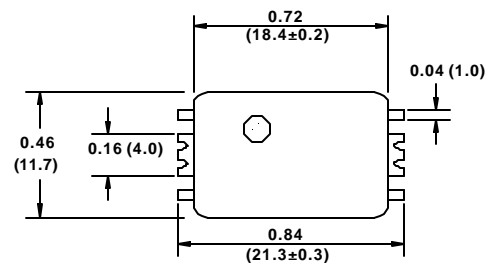
TC4 PACKAGE OUTLINES (NOT TO SCALE)

PACKAGE 6

TRIMMER HOLE FOR FREQUENCY ADJUSTMENT (LOCATION MAY VARY)

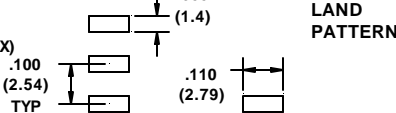
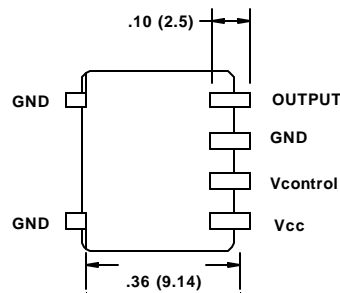
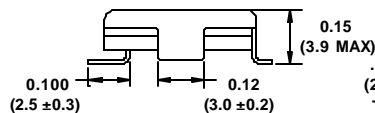
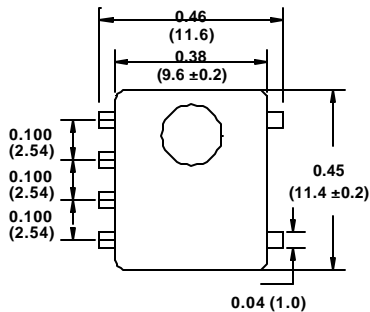


PACKAGE 7



LAND PATTERN

PACKAGE 8



PIN CONNECTIONS	
PIN	CONNECTION
1	Vcontrol
7	GROUND & CASE
8	OUTPUT
14	Vcc

INCHES (MILLIMETERS)