

Electrical

(REV. X)

ELECTRICAL SPECIFICATIONS

URNS RATIO :

TRANSMIT (PRIMARY) : (SECONDARY) : 1 : 2.42 ±3%
 RECEIVE (PRIMARY) : (SECONDARY) : 1 : 1.21 ±3%

INDUCTANCE :

TRANSMIT (PRIMARY) : 1.25mH MIN. @ 0.01V, 10KHz
 RECEIVE (PRIMARY) : 1.25mH MIN. @ 0.01V, 10KHz

LEAKAGE INDUCTANCE:

TRANSMIT (PRIMARY) : (WITH SECONDARY SHORT) : 0.5uH MAX. @ 1MHz
 RECEIVE (PRIMARY) : (WITH SECONDARY SHORT) : 0.5uH MAX. @ 1MHz

INTERWINDING CAPACITANCE:

(PRIMARY) TO (SECONDARY) : 35pf MAX @ 1MHz

D.C. RESISTANCE:

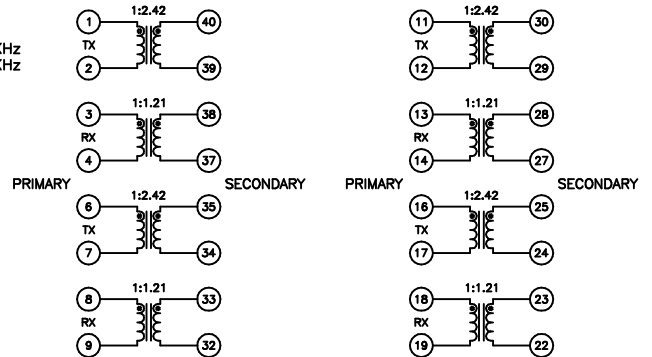
TRANSMIT (PRIMARY) : .5 ohms Max.
 RECEIVE (PRIMARY) : .5 ohms Max.

DIELECTRIC VOLTAGE WITHSTAND:

(PRIMARY) TO (SECONDARY) : 1500VAC for 60 seconds

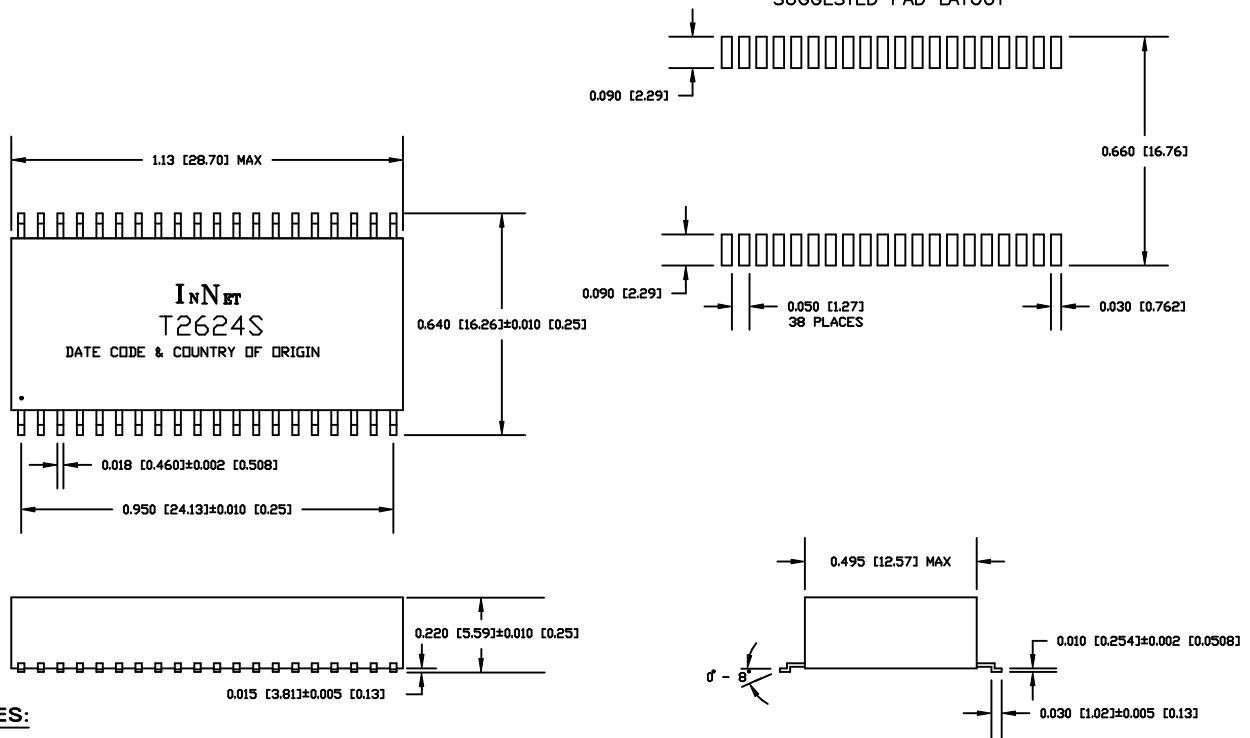
RETURN LOSS:

(WINDING WITH TURNS RATIO 2.42 IS 100 OHM REF.)
 51KHz TO 102KHz : 12dB MIN
 102KHz TO 2.048MHz : 18dB MIN
 2.048MHz TO 3.072MHz : 14dB MIN
 (17 OHM CONNECTED TO THE WINDING WITH TURNS RATIO 1)



Mechanical

SUGGESTED PAD LAYOUT



NOTES:

- LEADS MEET THE SOLDERABILITY REQUIREMENTS TO MIL-STD-202 METHOD 208.
- COPLANARITY OF PINS IS .004 [0.102] MAX.
- THE CASE IS UL 94 V-0 BLACK PLASTIC.