

Color-Keyed®

Connectors for All Copper Cables

Two Hole Lugs - 90° Short Barrel 600V Applications

Material: High Conductivity Wrought Copper
Finish: Electro Tin Plate

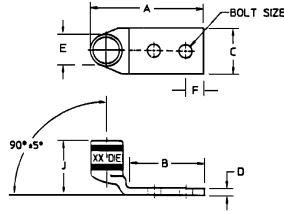


Fig. 1

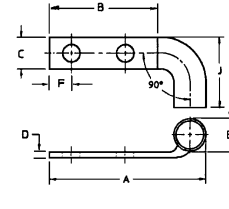
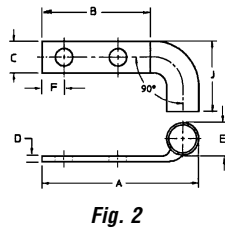
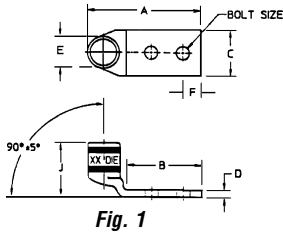


Fig. 2



Wire Size ¹		Cat. No.	Fig. No.	Bolt Size G	Dimensions (in.)								Die Code	Color Key	WP91412 List No.
Code	Flex				A	B	C	D	E	F	J	Spacing			
#14-10 ²		256-31426-141 ^{3,5}	2	#10	1 25/32	1 7/32	3/8	1/16	13/64	1/4	25/32	5/8	N/A	N/A	
		256-31426-6SPH ^{3,4}	1	#10	1 1/2	1 1/4	3/8	1/16	13/64	1/4	5/8	5/8-3/4	N/A	N/A	
		256-31426-6 ^{3,5}	1	#10	1 1/2	1 1/4	3/8	1/16	13/64	1/4	5/8	5/8	N/A	N/A	
		256-31426-6S ^{3,4,5}	1	#10	1 1/2	1 1/4	3/8	1/16	13/64	1/4	5/8	3/4-5/8	N/A	N/A	
#8	#8 37/24	256-30695-1409 ^{3,4}	1	#10	1 1/2	1 3/16	13/32	1/16	17/64	7/32	7/8	5/8-3/4	21	Red	
		256-31426-144 ^{3,5}	2	#10	1 13/16	1 7/32	3/8	1/16	17/64	1/4	15/16	5/8	21	Red	
		256-31426-33UB ^{4,5}	1	#10	1 9/16	1 3/16	13/32	1/16	17/64	7/32	5/8	5/8-3/4	21	Red	
		256-31426-33UBPH ⁴	1	#10	1 9/16	1 3/16	3/8	1/16	17/64	1/4	5/8	5/8-3/4	21	Red	
#6	#6 61/24	256-30695-1411 ^{3,4}	1	#10	1 19/32	1 3/16	7/16	5/64	19/64	7/32	7/8	5/8-3/4	24	Blue	
		256-30695-1183B ⁴	1	#10	1 5/8	1 3/16	7/16	5/64	19/64	1/4	5/8	5/8-3/4	24	Blue	
		256-30695-1356 ^{3,5}	1	#10	1 5/8	1 3/16	7/16	5/64	9/32	7/32	1	5/8	24	Blue	
		256-30695-1014B 54205UB	1	1/4	2 1/16	1 1/2	6/16	5/64	19/64	1/4	1 1/4	1	24	Blue	
		256-30695-252UB	1	1/4	1 3/4	1 9/64	7/16	7/64	19/64	1/4	29/32	1/4	24	Blue	137
#2	125/24	54207UB	1	1/4	1 11/16	1 3/16	19/32	3/32	13/32	1/4	1 1/4	5/8	33	Brown	
2/0 275/24	1/0	54210UB	1	3/8	2 5/8	1 13/16	13/16	9/64	37/64	3/8	1 1/2	1	45	Black	
250 MCM		256-30695-1245B ^{3,5}	1	3/8	3 19/32	2 3/4	1 1/8	9/64	49/64	5/8	2	1	62	Yellow	
		54213UB	1	3/8	3 5/32	1 13/16	1 3/16	3/16	49/64	3/8	1 3/8	1	62	Yellow	
		54868BEUB	1	1/2	4	3	1 3/32	9/64	19/64	1/2	2 3/16	1 3/4	62	Yellow	
	4/0 550/24	58265UB	1	1/2	3 17/32	2 13/16	1 1/4	3/16	27/32	1/2	1 3/8	1 3/4	62	Yellow	
300 MCM		54214UB	1	3/8	3 17/32	1 13/16	1 1/4	3/16	27/32	3/8	1 13/32	1	66	White	
350 MCM		54215UB	1	3/8	2 13/16	1 13/16	1 5/16	7/32	15/16	3/8	1 7/16	1	71	Red	66
		54282UB	1	1/2	4	2 13/16	1 3/8	7/32	29/32	1/2	1 5/32	1 3/4	71	Red	83
	350 925/24	58277UB	1	1/2	3 7/16	2 13/16	1 5/8	1/4	1 3/32	1/2	2	1 3/4	80	N/A	36
500 MCM		256-30695-1221B ^{3,5}	1	3/8	3 19/64	1 59/64	1 39/64	7/32	1 3/32	3/8	2 9/16	1	87	Brown	
		54218UB	1	3/8	3 5/32	1 13/16	1 5/8	1/4	1	3/8	2	1	87	Brown	70
		54286UB	1	1/2	3 15/16	2 9/16	1 5/8	1/4	1 3/32	3/8	2	1 3/4	87	Brown	92
500 1325/24		58281UB	1	1/2	4 1/8	2 13/16	1 25/32	9/32	1 1/4	1/2	2	1 3/4	99	Pink	
		58282UB	1	1/2	4 5/32	2 13/16	1 5/8	7/32	1 7/64	1/2	2	1 3/4	99	Pink	43



Two Hole Lugs - 90° Short Barrel 600V Applications (continued)

Material: High Conductivity Wrought Copper
Finish: Electro Tin Plate

Wire Size ¹		Cat. No.	Fig. No.	Bolt Size G	Dimensions (in.)								Die Code	Color Key	WP91412 List No.
Code	Flex				A	B	C	D	E	F	J	Spacing			
750 MCM		54223UB	1	1/2	4 13/32	2 13/16	1 15/16	15/16	1 21/64	1/2	2 3/16	1 3/4	106	Black	28
900 MCM	750 1925/24	54226UB	1	1/2	4 11/16	2 7/8	2 3/16	11/32	1 1/2	1/2	2 11/16	1 3/4	115	Yellow	50
1000 MCM		54228UB	1	1/2	4 7/8	3	2 17/64	19/64	1 35/64	1/2	2 13/16	1 3/4	125	N/A	

U.L. and C.S.A. listing of T&B connectors is a continual process - please call customer service for the latest listings.

Undrilled tongues are available on many tongue sizes - please call customer service for availability.

1. Call customer service for sizes not listed.
2. #14 - #10 AWG lugs must be crimped with the "C" nest when using the ERG2002 hand tool.
3. Long barrel.
4. Bolt hole slotted to provide range of bolt hole spacing (H).
5. No inspection hole.

For tool and die selection see page F44.