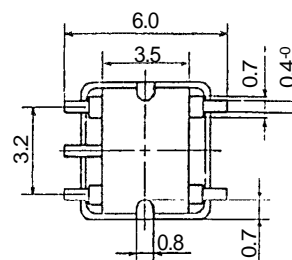
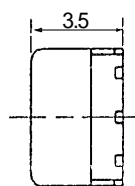
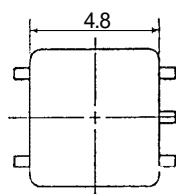


TYPE B4QF

Frequency Range: 1-500MHz



Features

- Phase $90^\circ \pm 1 \sim 5^\circ$
- Insertion Loss: 2.5 to 3.5dB Typ.
- Amplitude Unbalance: 1dB max.
- Impedance: 50ohm

Unit: mm
Tolerance: ± 0.3

Applications

- Antenna networks
- Image rejection mixer systems
- I and Q networks

STANDARD PARTS SELECTION GUIDE

TYPE B4QF

TOKO Part Number	Center Frequency (Fo) MHz	Impedance (Ω)	Phase Max. Deg. at Fo	Insertion Loss Max. dB at Fo	Amplitude Unbalance Max. dB at Fo	Isolation Typ. (dB)	VSWR Typ.
B4QF-1024	1.14	50	90 ± 4.0	4.0	1.0	45	1.03
B4QF-1001	10.7	50	90 ± 2.0	4.0	1.0	39	1.01
B4QF-1004	28.35	50	90 ± 2.0	4.0	1.0	36	1.05
B4QF-1023	36	50	90 ± 2.0	4.0	1.0	32	1.06
B4QF-1028	43.2	50	90 ± 2.0	4.0	1.0	27	1.06
B4QF-1022	71	50	90 ± 2.0	4.0	1.0	30	1.07
B4QF-1009	90	50	90 ± 2.0	4.0	1.0	25	1.13
B4QF-1006	98	50	90 ± 2.0	4.0	1.0	26	1.11
B4QF-1008	110	50	90 ± 2.0	4.0	1.0	28	1.08
B4QF-1016	118	50	90 ± 2.0	4.0	1.0	28	1.10
B4QF-1007	140	50	90 ± 2.0	4.0	1.0	25	1.08
B4QF-1010	150	50	90 ± 2.0	4.0	1.0	25	1.10
B4QF-1020	215	50	90 ± 2.0	4.0	1.0	23	1.15
B4QF-1005	240	50	90 ± 2.0	4.0	1.5	20	1.17
B4QF-1019	403	50	90 ± 3.0	4.2	1.0	16	1.26
B4QF-1018	430	50	90 ± 3.0	4.2	1.0	16	1.20
B4QF-1021	455	50	90 ± 3.0	4.2	1.0	15	1.26