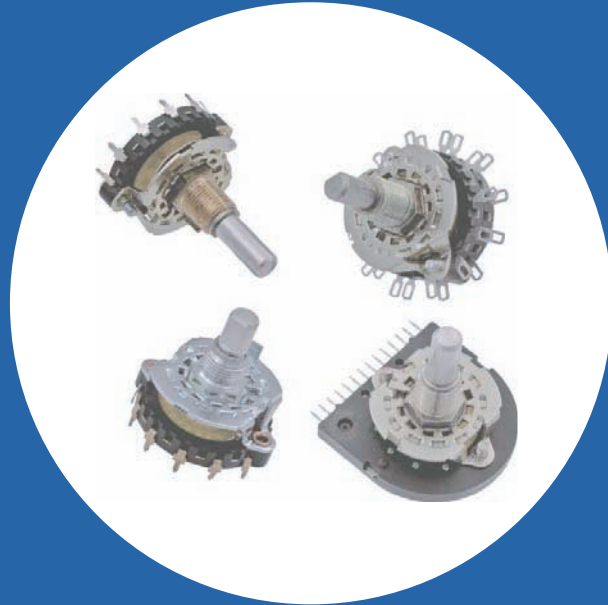


# Industrial Rotary Switch

### Features

- Hill and valley detent
- Balanced double bump detent spring
- 30° or 60° indexing
- Spring return styles available
- Adjustable stop available
- Solder lug and printed circuit terminals available
- Molded stator prevents solder from flowing into the circuit
- Custom switching patterns available
- Index or wafers are available separately
- RoHS compliant



### Electrical and Mechanical Specifications

#### Indexing

Double bump spring hill and valley detent with standard 30° indexing for 2 through 12 positions or with special 60° indexing from 2 to 6 positions.  
Special 90° indexing consult CTS

#### Voltage and Current Rating

UL Rating: 3/4 amp at 125 VAC (shorting type only)  
Special Rating: 1/4 amp at 28 VDC (shorting or non shorting)  
1 amp at 28 VDC (shorting type only)

#### Contact Resistance

.015 ohm max. when measured from adjacent terminals

#### Stop Strength

15 in-lb (17.3 Kgf-cm)

#### Torque

Up to 48 in-oz. (3.4 Kgf-cm)

#### Detent Rotational Life

25,000 cycles

#### Materials

Shaft: Aluminum or unplated brass at CTS option  
Bushing: Brass  
Detent Spring: Spring brass or nickel silver depending on torque requirements  
Front Plate: Zinc plated or nickel plated steel  
Rotor Contacts, Stator Contacts and Terminals:  
Silver plated brass standard  
Stator Insulator: Glass reinforced thermoset material

#### Bushing Lengths

Standard: 3/8"-32 UNEF-2A Thread, 1/4" (6.35mm) or 3/8" (9.53mm) long.  
Special Lengths: Available as required

#### Locating Lugs

Standard: Left side .531" (13.5mm) radius  
Special: Right side .531" (13.5mm) radius or no lug

#### Shaft Trim

Standard: Plain round, Flat, Slot, Knurl, or mixed (Flat with Slot)  
Special: Available as request

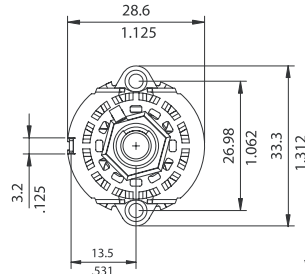
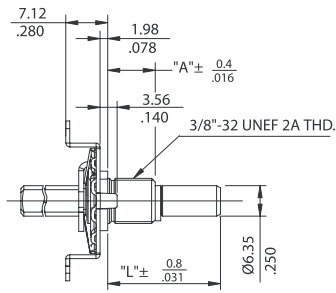
#### Frames

Machine screw, bolt & nut, or rivet construction

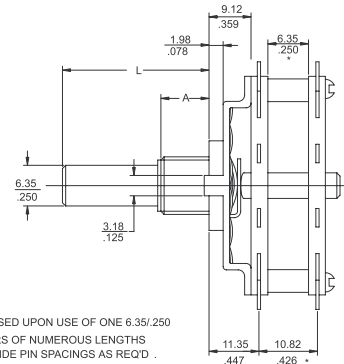
#### Panel Seal

Available with bushing and shaft seal

# Physical Dimensions



\* NOTE :  
10.82/426 DIMENSION BASED UPON USE OF ONE 6.35/250  
NO SPACERS OR SPACERS OF NUMEROUS LENGTHS  
ARE AVAILABLE TO PROVIDE PIN SPACINGS AS REQ'D .

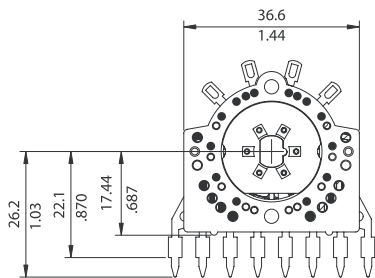


DIMENSION:  $\frac{mm}{inch}$

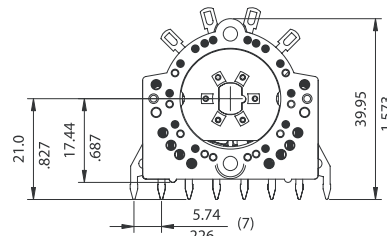
Detent Only

Typical Assembled Switch

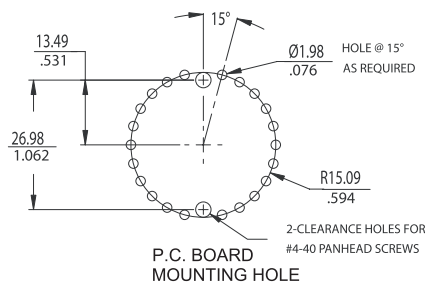
# Available Terminal Styles



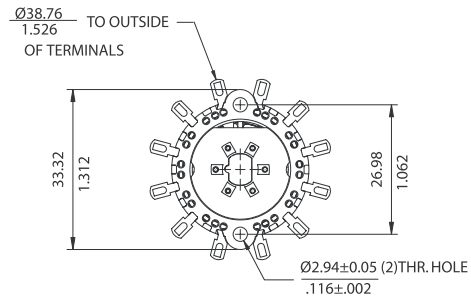
Y-Style



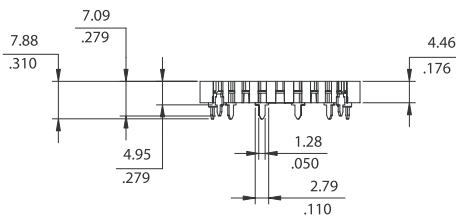
X-Style



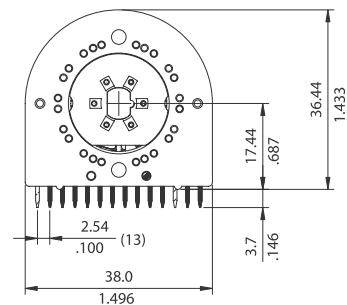
P.C. BOARD MOUNTING HOLE



T-Style



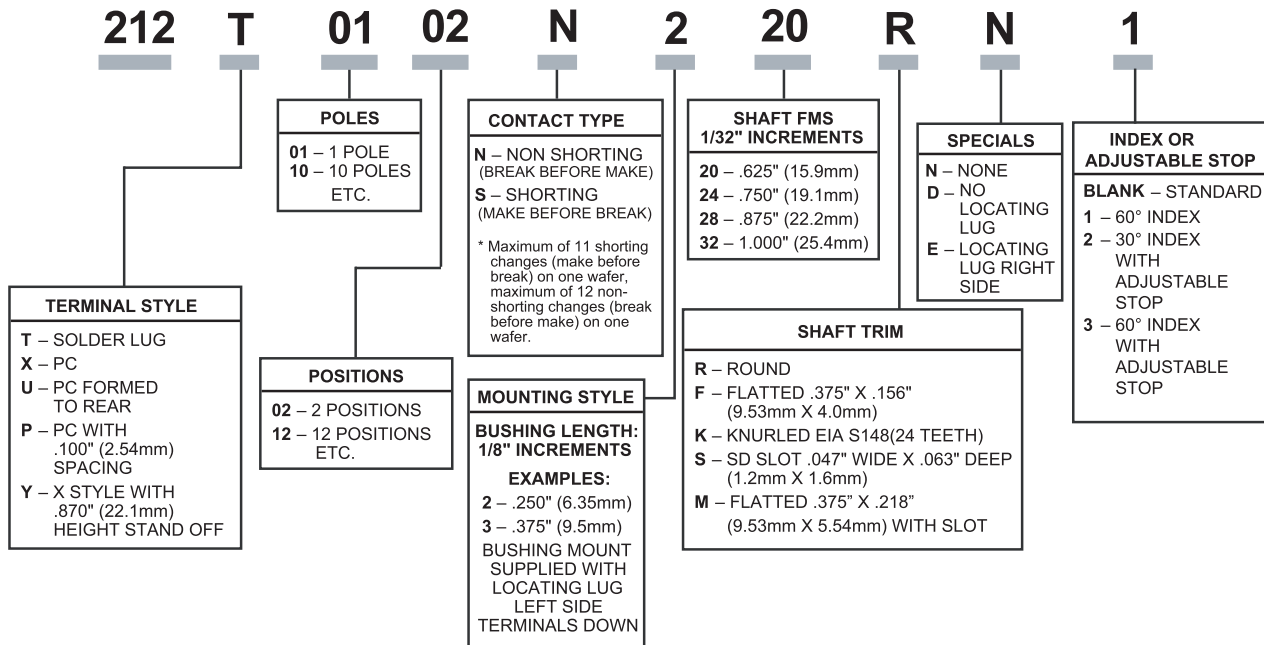
U-Style



P-Style

DIMENSION:  $\frac{mm}{inch}$

## Ordering Information



### Note:

Consult CTS for other common standard features not listed.