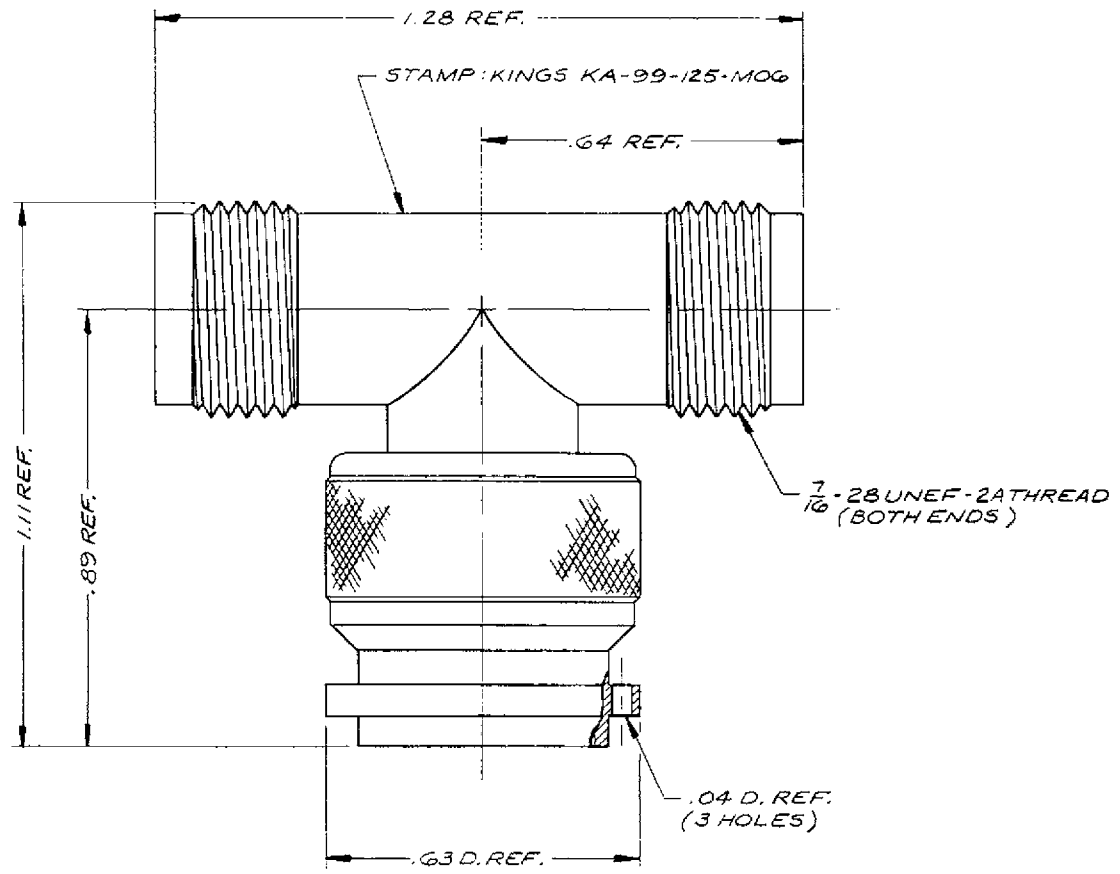


DASH NO. M CODE MADE FROM



- NOTES:
1. CONNECTOR TO HAVE TR-5 FINISH. CENTER CONTACTS TO BE HARD GOLD PLT.
 2. SAME AS KA-99-64 EXCEPT FOR CONTACT FINISH & MARKING.
 3. MARK PACKAGE: KINGS KA-99-125-MOG XXXX (DATE CODE)

- UNLESS OTHERWISE SPECIFIED:
1. TOLERANCES: FRACTIONS & 2 PLACE DECIMALS $\pm .010$
3 PLACE DECIMALS $\pm .004$ ANGLES $\pm 0^{\circ}30'$
T. I. R. CONCENTRICITY OF ANY 2 DIAMETERS MAY NOT EXCEED HALF THE SUM OF THEIR TOLERANCES.
 2. REMOVE ALL BURRS. BREAK SHARP EDGES .005 MAX.
 3. NO FILLETS PERMITTED.
 4. SURFACE ROUGHNESS 63 MICROINCHES RMS MAX.
 5. ALL DIMENSIONS PRIOR TO PLATING.
 6. ALL PLATING IN ACCORDANCE WITH KER 10004.

KA-99-125-MOG S-D

REVISIONS	
ISSUE	CHANGES
1	CN 31044 C JCA 9 AUG 89
2	CN 38247 BDH 12 MAR 01

SCALE: 4:1
USED ON
REF.
TNC TEE ADAPTER F-M-F
DRAWN: MJB DATE: 9 FEB 80
APPR: [Signature] DATE: 12 FEB 80
 <small>KINGS ELECTRONICS CO., INC. ISLANDIA, NEW YORK 11749</small>
KA-99-125-MOG S-D