

Product Data Sheet

hm2.0 Male connector, type L,
Part No. 243-51000

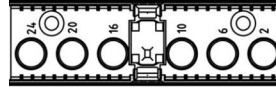
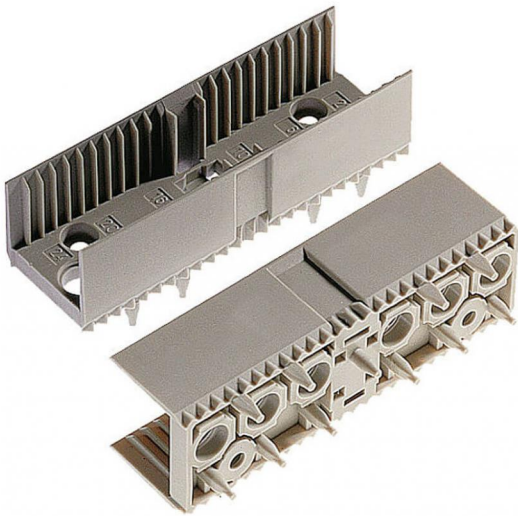


Illustration similar



Perpendicular



Press-fit



Power

- for PCB ≥ 1.44 mm
- tested according to IEC 61076-4-101



» to product on www.ept.de



» to product group hm 2.0

Product Data Sheet

hm2.0 Male connector, type L,
Part No. 243-51000



Technical Specifications

Basics

Specification	IEC 61076-4-101
Operating Temperature Range	-55°C to +125°C

Material

Insulator Material	PBT glass filled, UL 94 V-0
CTI value <i>IEC 60112</i>	200

Approval / Compliance

UL file	E130314
Environment	RoHS compliant

Product Data Sheet

hm2.0 Male connector, type L,
Part No. 243-51000



Accessories

- » hm2.0 High power contact for type L, M and N
Part Number 915-61011
- » hm2.0 Coding key male connector
Part Number 243-8031
- » hm2.0 Coding key male connector
Part Number 243-8014

Drawings

Component data for this product you can request through sales@ept.de