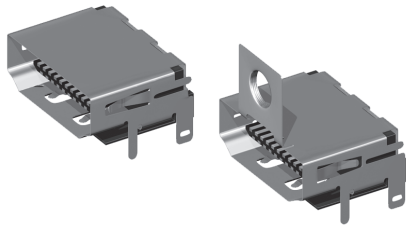


**HDMI FEMALE**  
**ID: 398**

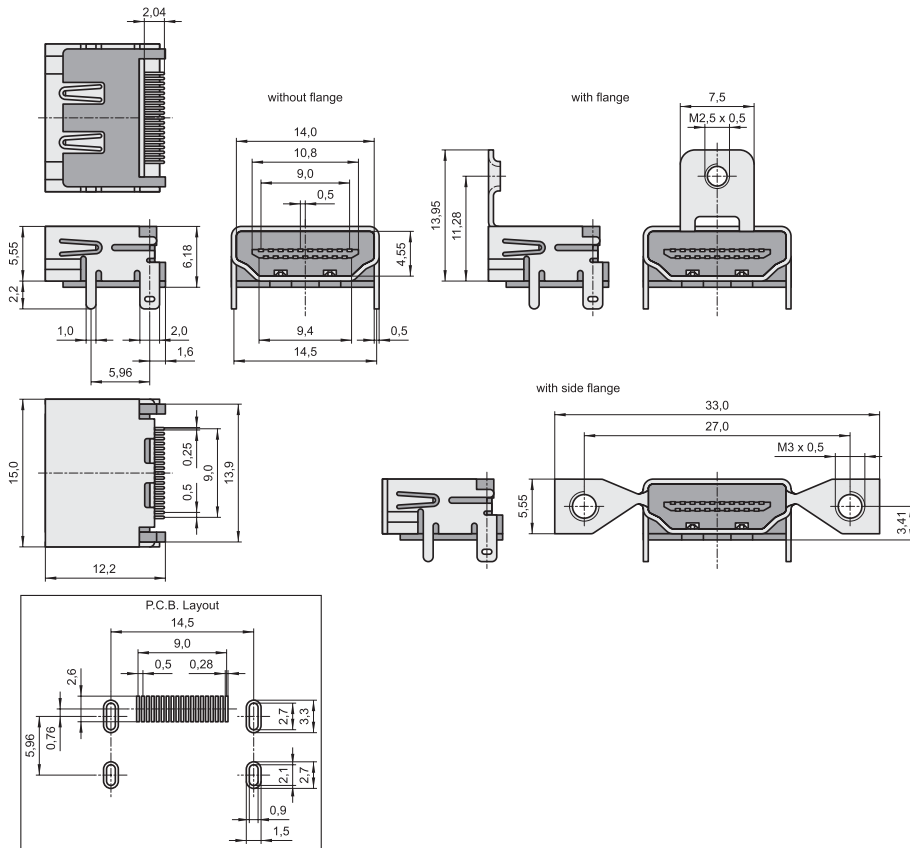
BL - HDMI - 1220 PGT

Series 730



**TECHNICAL DATA**

Pitch	0,50 mm
Insulating Material	high temp. thermoplast UL94V-0
Contact Material	phosphor bronze
Rated Current	0,5 Amp.
Rated Voltage	40 V
Withstanding Voltage	500 V <sub>AC</sub>
Operating Temperature	-25°C to +85°C
Maximum Soldering Temperature	260°C for 10 seconds



All dimensions in mm.  
Other versions upon request.

**BL-HDMI - 1220 P GT - XF - 019 U**

1220: mounting height 12,20mm

P: parallel version

GT: sel. Au

XF: 0F = without flange  
1F = with flange  
2F = with side flanges

RoHS: U = RoHS-compliant with high temp. plastic

019: 19 contacts