



NATIONAL HYBRID, INC.

2200 Smithtown Avenue, Ronkonkoma, NY 11779
(631) 981-2400 FAX 631-981-8888

Mil-Std-1553/1760 Products NHI-15479 Ceramic Package Series +5V Monolithic Dual Transceivers

Features:

- Compliant to Mil-Std-1553A & B, Mil-Std-1760
- Single +5V Supply !!
- 1.5 Watts Maximum Power Dissipation @ 100% Duty Cycle !!
- Output Driver Withstands Short Circuit Fault
- Proprietary Monolithic Design Provides Superior Reliability, with outstanding Thermal Impedance Characteristics !!
- Superior Noise Performance Characteristics
- Compatible with the NHI-1559 family devices

Description:

The NHI-15479 series of Mil-Std-1553/1760 monolithic dual transceivers are available in 1.850" x .600", 36 pin plug-in and flatpack ceramic packages. It operates off of a single +5V power supply with very low standby power dissipation.

Each receiver converts the 1553 bus bi-phase data to complementary RX and RX_L TTL digital outputs for use by the manchester decoder. The device provides independent receiver enables for each channel.

The transmitters will output bi-phase manchester to the coupling transformer when the TX and TX_L inputs are driven by complementary TTL digital data. The device provides an independent transmitter inhibit TXINH for each channel.

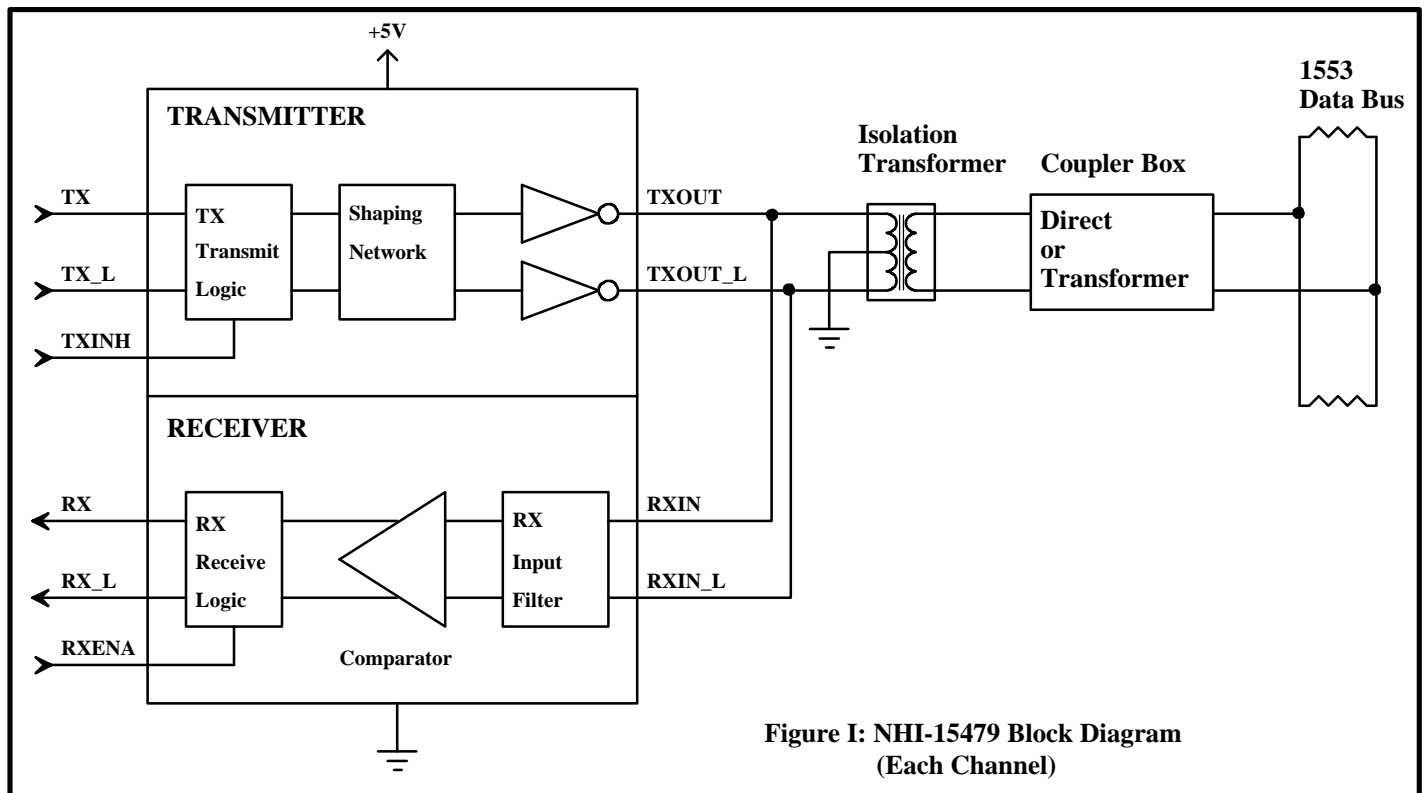


Figure I: NHI-15479 Block Diagram
(Each Channel)

NHi-15479 Series

TABLE I: Electrical Specifications

Parameter	Condition	Symbol	Min	Typ	Max	Units
POWER SUPPLY REQUIREMENT		Vcc	4.7		5.5	V
TOTAL SUPPLY CURRENT	Vcc=5.0V, Not Transmitting	Icc1		70	80	mA
	Vcc=5.0V, Transmit one channel @ 50% duty cycle	Icc2		320	340	mA
	Vcc=5.0V, Transmit one channel @ 100% duty cycle	Icc3		570	615	mA
POWER DISSIPATION	Vcc=5.0V, Not Transmitting	Pd1			0.4	W
	Vcc=5.0V, Transmit one channel @ 100% duty cycle	Pd2			0.95	W
OPERATING TEMPERATURES	Junction	Tj	-55		165	°C
		Tc	-55		125	°C
	Storage	Ts	-55		165	°C
THERMAL IMPEDANCE	Junction to Case	qjc			4	°C/W
LOGIC I/O						
RXENA_A, TXA, TXA_L, TXINH_A, RXENA_B, TXB, TXB_L, TXINH_B	Vcc= 5.5V, Vil= 0.0V	Iil			-0.4	mA
	Vcc= 4.7v, Vih= 2.7V	Iih			20	uA
RXA, RXA_L, RXB, RXB_L	Vcc= 5.5V, Iol= -4mA	Vol			0.4	V
	Vcc= 4.7v, Ioh= 400 uA	Voh	2.7			V
RECEIVER						
Input Resistance	Differential	Rin	20			k W
Input Capacitance	Differential	Cin			5	pF
Common Mode Rejection Ratio		CMRR	40			dB
Input Level	Differential	Vin			40	Vpp
Receiver Delay	Zero crossing on bus to RX or RX_L	t _{RD}		250	350	nS
TRANSMITTER						
Output Voltage	Across 140 W load	V _{out}	29		36	Vpp
Rise/Fall Time	10% to 90% of peak to peak output	t _r , t _f	100	150	300	nS
Transmitter Delay	TX or TX_L edge to bus zero crossing	t _{TD}		125	150	nS
Output Dynamic Offset Voltage	Across 35 W load	Vdyn	-90		90	mV
Output Noise	Differential	Vnpp			10	mVpp
Output Resistance	Differential, not transmitting	Rout	10			kΩ

Note: Typical receiver threshold is 0.9v pk-pk, reference to the bus.

NHi-15479 Series

Table II: Pin Functions

Pin#	Function	Pin#	Function
1	TXOUT_A	36	TXA_L
2	TXOUT_A_L	35	TXA
3	GND_A	34	TXINH_A
4	NC	33	+5V_A
5	RXA	32	NC
6	RXENA_A	31	GND_A
7	GND_A	30	RXIN_A_L
8	RXA_L	29	RXIN_A
9	NC	28	NC
10	TXOUT_B	27	TXB_L
11	TXOUT_B_L	26	TXB
12	GND_B	25	TXINH_B
13	NC	24	+5V_B
14	RXB	23	NC
15	RXENA_B	22	GND_B
16	GND_B	21	RXIN_B_L
17	RXB_L	20	RXIN_B
18	NC	19	NC

Transformer Requirements:

The NHi-15479 series requires a transformer with a turns ratio of 1:2.5 for Direct Coupling, and a turns ratio of 1:1.79 for Transformer Coupling to the Mil-Std-1553 Bus. Technitrol part number Q1553-45 or equivalent is recommended. The center tap on the transceiver side of the isolation transformer must be grounded.

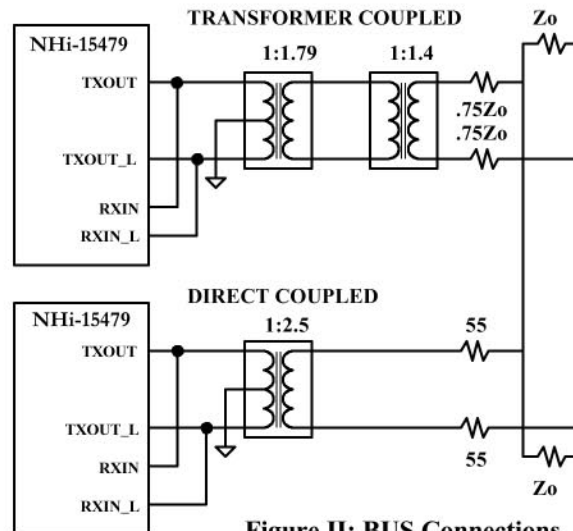
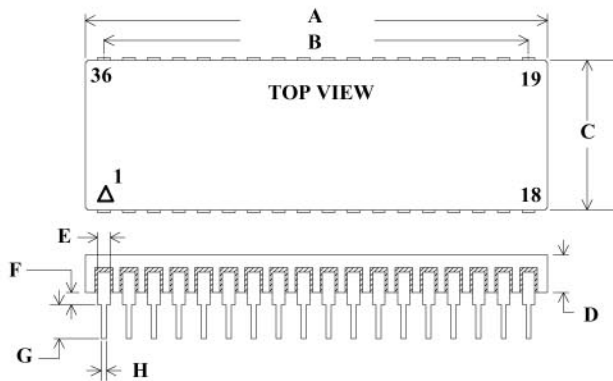


Figure II: BUS Connections

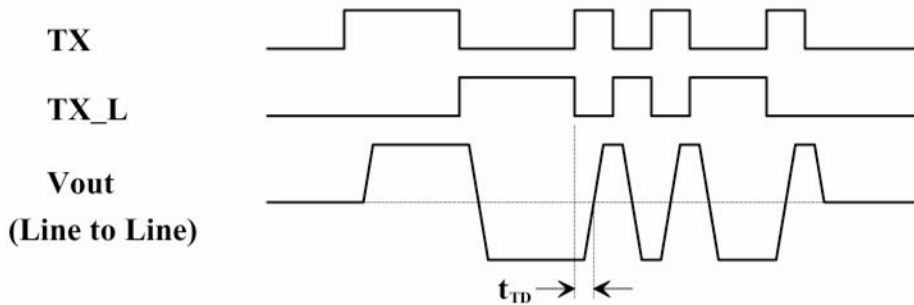


DIM	TYP (inches)	TOL (+/- inches)
A	1.850 SQ	0.015
B	17 EQ SP @	0.100 = 1.700
C	0.600	0.010
D	0.140	MAX
E	0.050	0.002
F	0.050	0.010
G	0.150	MIN
H	0.018	0.002

36 Pin Ceramic Plug-In Package Detail

NHI-15479 Series

Transmit Waveforms



Transmitter Operation:

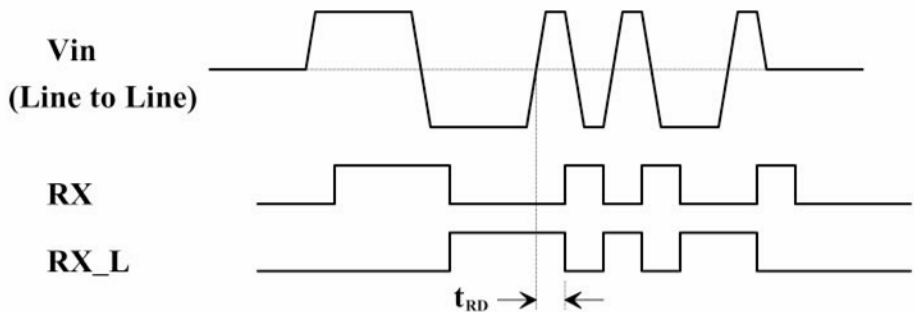
A high level input on TXINH will inhibit the transmitter outputs. If the TX & TX_L transmitter inputs are both high or both low, the transmitter is also inhibited. The transmitter TTL inputs should not be driven with steady state complimentary inputs. In the steady state condition, both TTL inputs must be at the same logic levels, both either high or low.

Receiver Operation

A low level input on RXENA will disable the receiver outputs RX & RX_L regardless of bus activity. The receiver output compatibility may be specified as logic 0 or logic 1 when in standby mode.

** See Ordering Information

Receive Waveforms



Ordering Information:

NHI-15479 FP / 883

Reliability Grade

883 = Fully Compliant with Mil-Std-883

M = Screened to Mil-Std-883, -55 to +125 °C

Blank = Industrial, -40 to +85 °C

Package Style

Blank = Plug-In

Transceiver Type and Decoder Compatibility

479 = Mil-Std-1553, RX & RX_L, Standby = Logic 0

480 = Mil-Std-1553, RX & RX_L, Standby = Logic 1

See QML-38534 for NHI's Manufacturer Qualification Under Mil-PRF-38534

The information provided in this document is believed to be accurate. No responsibility is assumed by National Hybrid Inc. for its use, and no licence or rights are granted by implication or otherwise in connection therewith. Specifications are subject to change without notice.