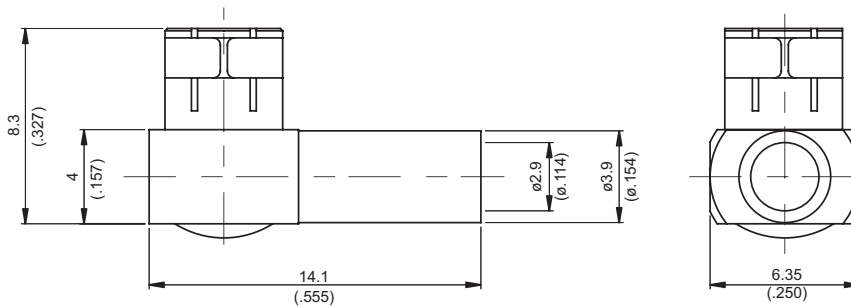


SMB3100G-9316

SMB Plug Crimp Right Angle 50Ω



Parts	Material	Plating (Micro-inch)
Cover	Brass	Nickel 100 Over Copper 50
Insulator	Teflon	
Plug	Beryllium Copper	Nickel 100 Over Copper 50
Contact Pin	Beryllium Copper	Gold 20 Over Nickel 50 Over Copper 50
Body	Brass	Nickel 100 Over Copper 50

Weight: 2.33 g

Suitable Cables: RG174, RG188, RG316, RG316-E, RG316-FEP

This part number complies with RoHS.

Notice: JYEBAO reserves the right to make modifications deemed appropriate.

CABLE ASSEMBLY INSTRUCTION

SMB3100G-9316

JYE BAO CO., LTD.

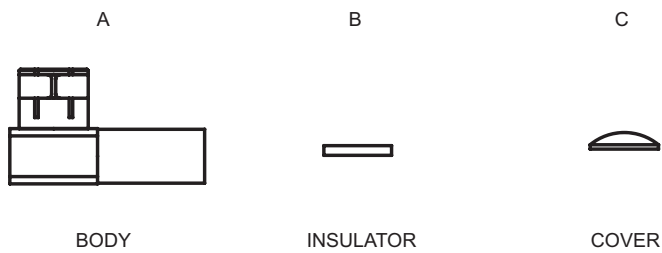


DIAGRAM	ASSEMBLY INSTRUCTION
	<p>Step 1: STRIP JACKET.</p>
	<p>Step 2: MOVE BRAIDING BACK WARDS. Step 3: STRIP INSULATOR.</p>
	<p>Step 4: SLIDE CENTER CONDUCTOR ON THE CONTACT PIN OF CONNECTOR "A" AND SOLDER IN "Y" Step 5: SOLDER IN "X".</p>
	<p>Step 6: PRESS ON THE TOP OF "B" AND "C" WITH JIGS.</p>

This part number complies with RoHS.

Notice: JYEBAO reserves the right to make modifications deemed appropriate.