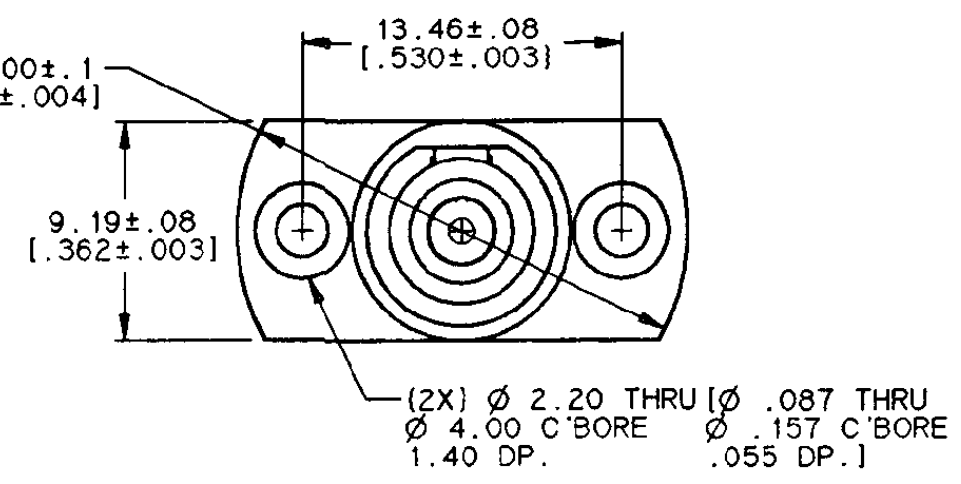
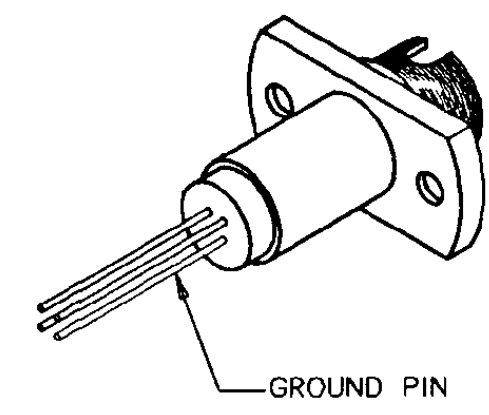
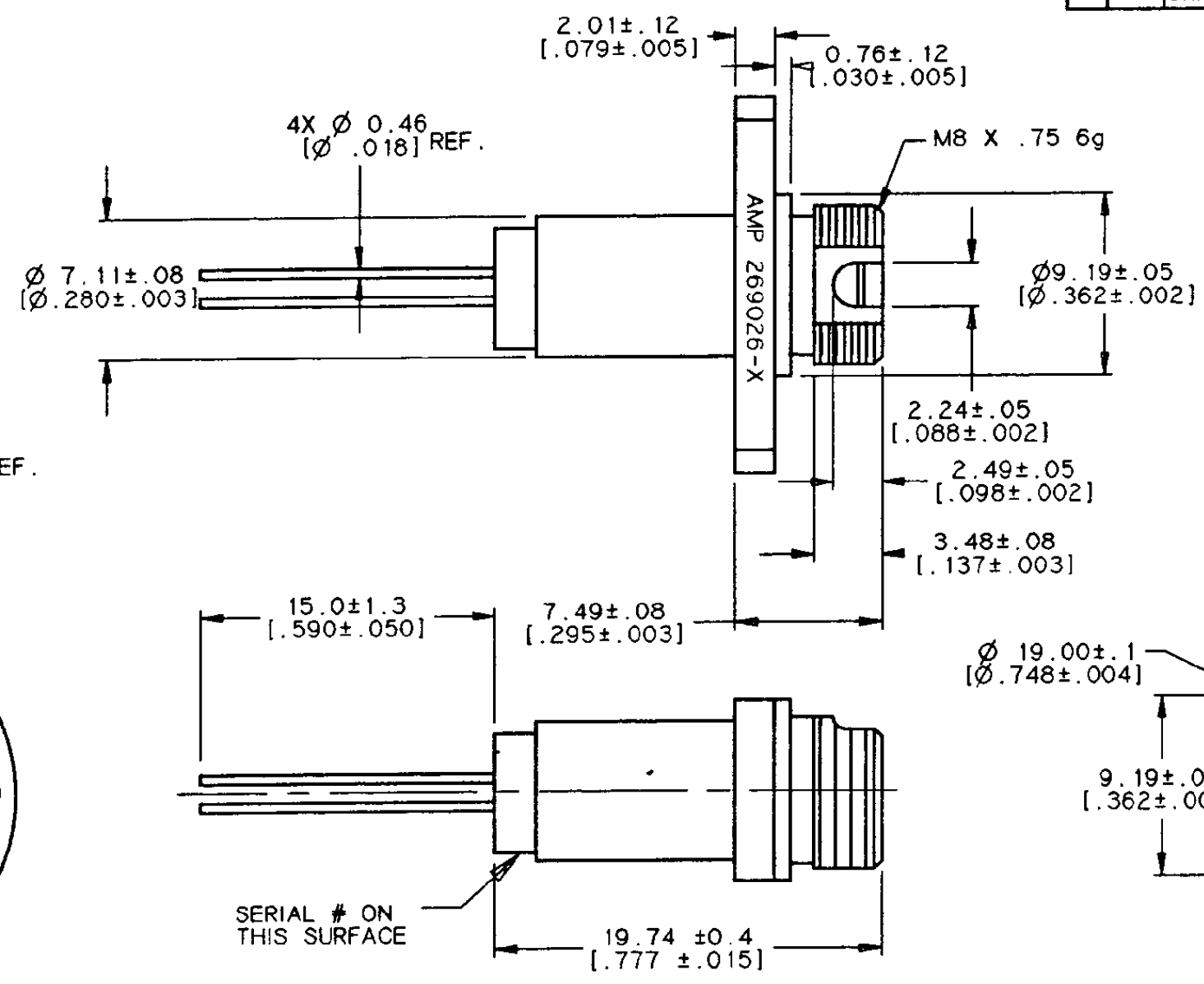
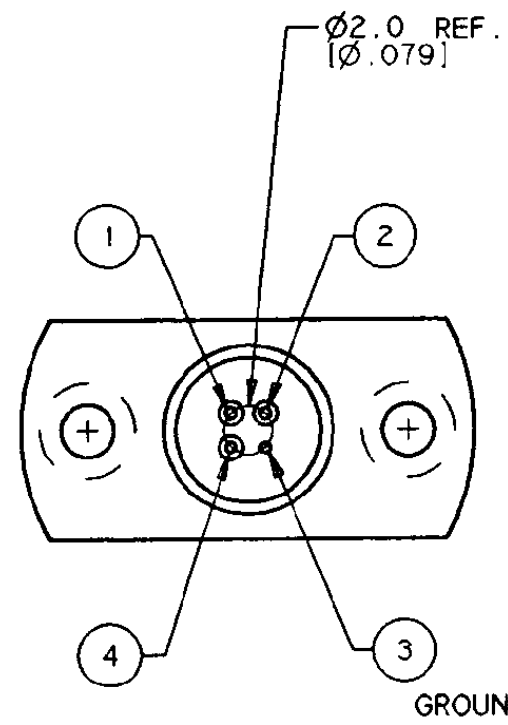
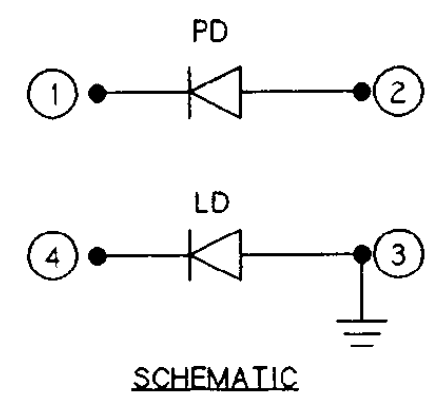


LOC	DIST	REVISIONS					
DR	01	P	LTR	DESCRIPTION	DATE	DWN	APVD
		0		ORIGINAL RELEASE	27-SEP-95	-	-



NOTES:

- CONNECTOR TYPE IS FC/PC PER JIS-C-5970.
- OPTICAL REFERENCE SURFACE PER JIS-C-5970.
- LEADS ARE SOLDERABLE PER MIL-STD-883D METHOD 2003.7
- PARTS ARE NOT COMPATIBLE WITH ANY AUTOMATIC SOLDERING TECHNIQUES SUCH AS WAVE SOLDERING AND AQUEOUS RINSING.
- MAXIMUM SOLDERING CONDITIONS 270°C. 10 SECONDS.
- EACH UNIT SERIALIZED.

0.2	-7	269026-1
0.5	-3	269026-2
1.0	0	269026-3
0.1	-10	269026-4
Po nom (mW)	Po nom (dBm)	PART No.

THIS DRAWING IS A CONTROLLED DOCUMENT FOR AMP INCORPORATED. IT IS SUBJECT TO CHANGE AND THE CONTROLLING ENGINEERING ORGANIZATION SHOULD BE CONTACTED FOR THE LATEST REVISION.		DWN. T. GARCIA	<b>AMP</b> AMP Incorporated Harrisburg, PA 17105-3608	
DIMENSIONS: mm [Inches]		CHK. R. RUBBO		
TOLERANCES UNLESS OTHERWISE SPECIFIED: 1 PLC. DEC. ±0.25 [.010] 2 PLC. DEC. ±0.13 [.005] ANGLES ±0.5 DEG.		APVD. <i>R. Rubbo 10/3/95</i>	NAME FC HIGH TEMPERATURE LASER	
MATERIAL:		PRODUCT SPEC. 108-55006	DRAWING NO. 3737DC	
FINISH:		APPLICATION SPEC.	SIZE A3	CAGE CODE -
WEIGHT:		CUSTOMER DRAWING	DRAWING NO. ©-269026	
			SCALE: 3:1 SHEET 1 OF 2 REV. 0	

4

3

2

1

THIS DRAWING IS UNPUBLISHED.

RELEASED FOR PUBLICATION .19

© COPYRIGHT 19

BY AMP INCORPORATED. ALL RIGHTS RESERVED.

LOC DR DIST 01

REVISIONS

P	LTR	DESCRIPTION	DATE	DWN	APVD
0		ORIGINAL RELEASE	27-SEP-95	-	-

SPECIFICATIONS AT 25°C

PARAMETER	SYMBOL	TEST CONDITIONS	UNITS	MIN.	TYP.	MAX.
THRESHOLD CURRENT	$I_{th}$		mA	---	12	22
FORWARD VOLTAGE	$V_F$	$P_o$	V	---	1.2	1.6
FORWARD CURRENT	$I_{DRIVE}$	$P_o$	mA	---	30	50
OPTICAL OUTPUT POWER	$P_o$	CW	mW			
-1				---	0.2	---
-2				---	0.5	---
-3				---	1.0	---
-4				---	0.1	---
CENTER WAVELENGTH	$\lambda$	$P_o$	nm	1295	1315	1335
RISE/FALL TIME	$T_R, T_F$	10 - 90%	ns	---	---	0.5
DIFFERENTIAL EFFICIENCY	$\eta$					
-1				0.01	---	---
-2				0.02	---	---
-3				0.05	---	---
-4				0.008	---	---
TRACKING ERROR	$E_1$	-40 TO 85°C	dB	---	±0.5	±1.0
MONITOR PHOTOCURRENT	$I_{mon}$	$P_o$	mA	0.1	---	1.0

NOTES:

- 7. ESD PRECAUTIONS MUST BE EXERCISED BEFORE HANDLING COMPONENT.
- 8. THIS MODULE IS A CLASS III B LASER MODULE.
- 9. UNIT IS SUPPLIED WITH A DUST CAP AND DATA SHEET.
- 10. FORWARD CURRENT =  $I_{TH} + I_{MOD}$
- 11. FOR ADDITIONAL INFORMATION REFER TO PRODUCT SPECIFICATION 108-55006.
- 12. EACH SHIPMENT IS SUPPLIED WITH TABULATED DATA (THRESHOLD CURRENT, MONITOR CURRENT, SLOPE EFFICIENCY, AND WAVELENGTH).

ABSOLUTE MAXIMUM RATINGS

PARAMETER	SYMBOL	TEST CONDITIONS	MIN.	MAX.	UNITS
FORWARD CURRENT	$I_F$	---	---	80	mA
REVERSE VOLTAGE	$V_R$	---	---	2	V
OPERATING TEMP.	$T_C$	---	-40	85	°C
STORAGE TEMP.	$T_{STG}$	---	-40	85	°C

0.2	-7	269026-1
0.5	-3	269026-2
1.0	0	269026-3
0.1	-10	269026-4
$P_o$ nom (mW)	$P_o$ nom (dBm)	PART No.

THIS DRAWING IS A CONTROLLED DOCUMENT FOR AMP INCORPORATED. IT IS SUBJECT TO CHANGE AND THE CONTROLLING ENGINEERING ORGANIZATION SHOULD BE CONTACTED FOR THE LATEST REVISION.		DWN. T. GARCIA	<b>AMP</b> AMP Incorporated Harrisburg, PA 17105-3608
DIMENSIONS: mm [inches]		CHK. R. RUBBO	
TOLERANCES UNLESS OTHERWISE SPECIFIED: 1 PLC. DEC. ±0.25 [.010] 2 PLC. DEC. ±0.13 [.005] ANGLES ±0.5 DEG.		APVD. <i>John R. Rubbo 10/19/95</i>	NAME FC HIGH TEMPERATURE LASER
MATERIAL:		PRODUCT SPEC. 108-55006	3738DC
FINISH:		APPLICATION SPEC.	SIZE A3
		WEIGHT.	CAGE CODE -
		CUSTOMER DRAWING	DRAWING NO. ©-269026
			SCALE: 3:1 SHEET 2 OF 2 REV. 0