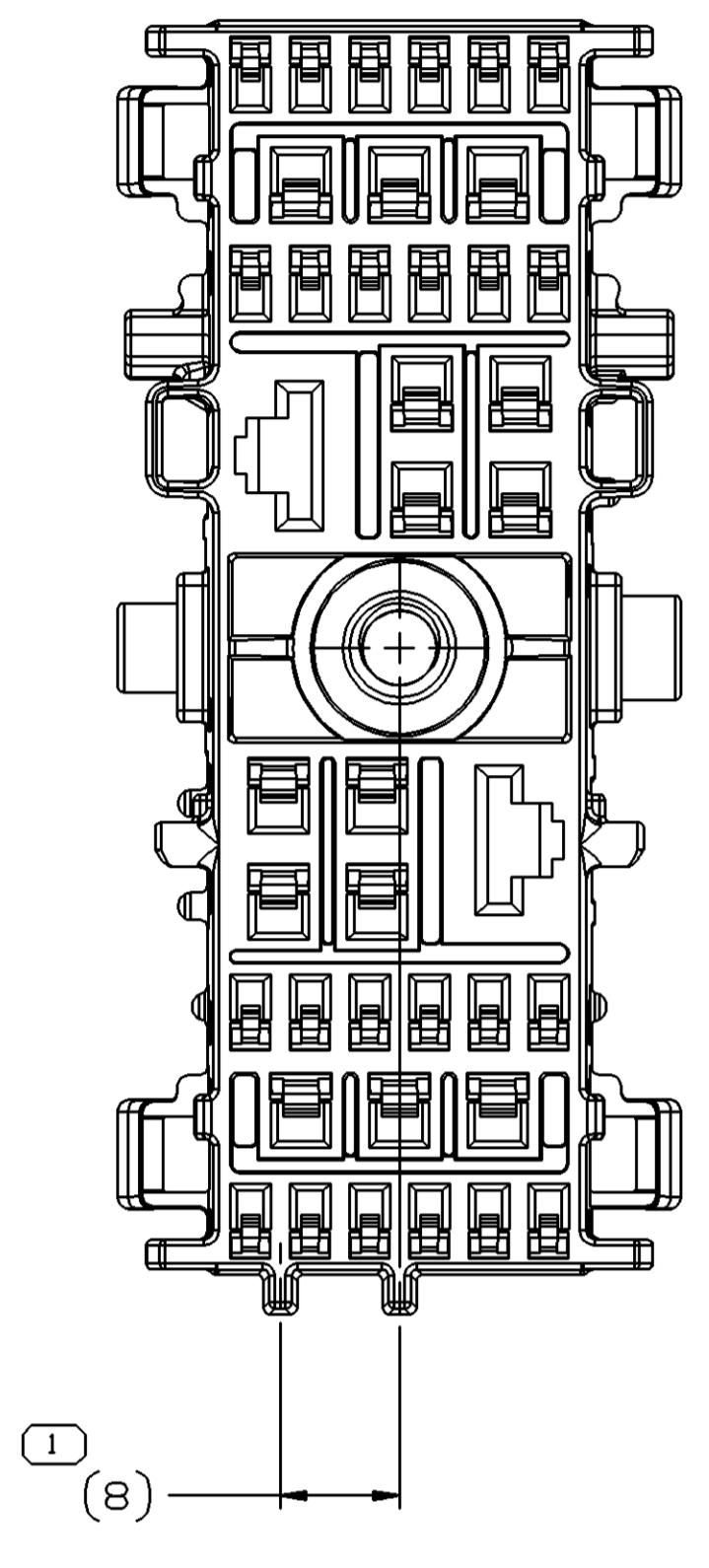
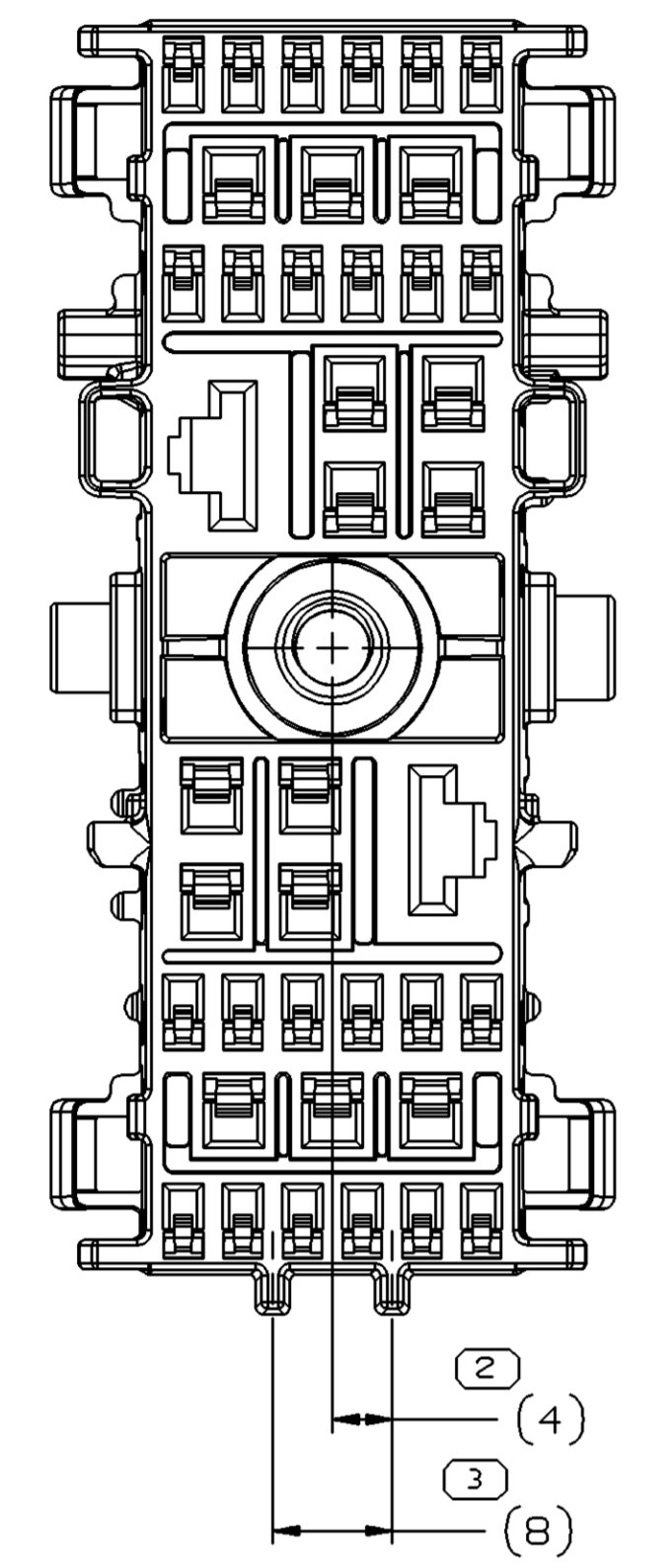


SYMBOL DEFINITION		MISSING SYMBOLS	
A DIMENSION WITHOUT AN INSPECTION REPORT SYMBOL DOES NOT REQUIRE INSPECTION. IT MAY BE CONTROLLED ON THE INDIVIDUAL COMPONENT DRAWING.	TOTAL NO OF INSPECTIONS REQUIRED	NO MISSING SYMBOL NUMBER	
	LAST NO. USED		

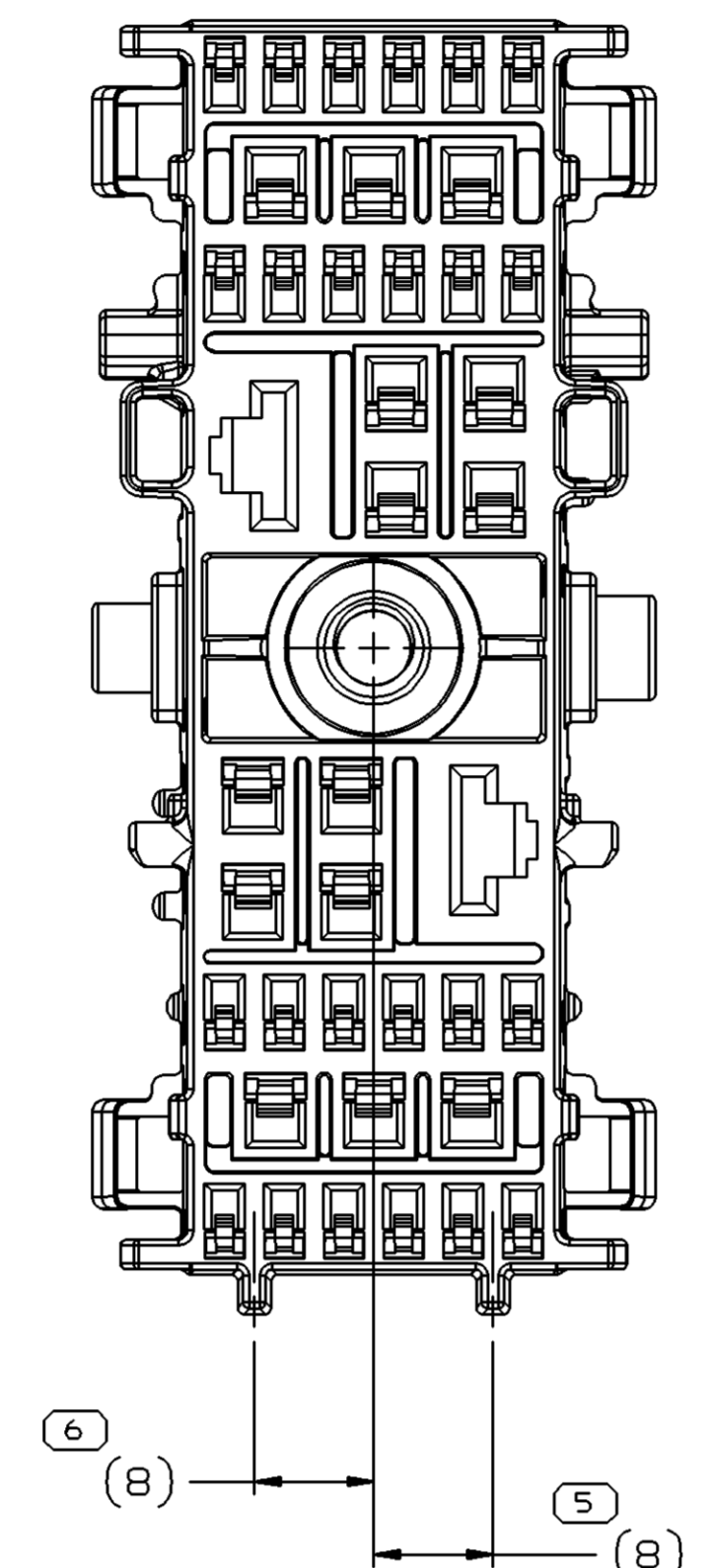
DWO STATUS				REVISION HISTORY				AUTH	DR	APVD	APVD
DATE	STG	REV	N/P	CHO	ZONE						
28MY05	R	01	-	-	-	ALL PARTS - RELEASED			268337	RCH	RCH SD



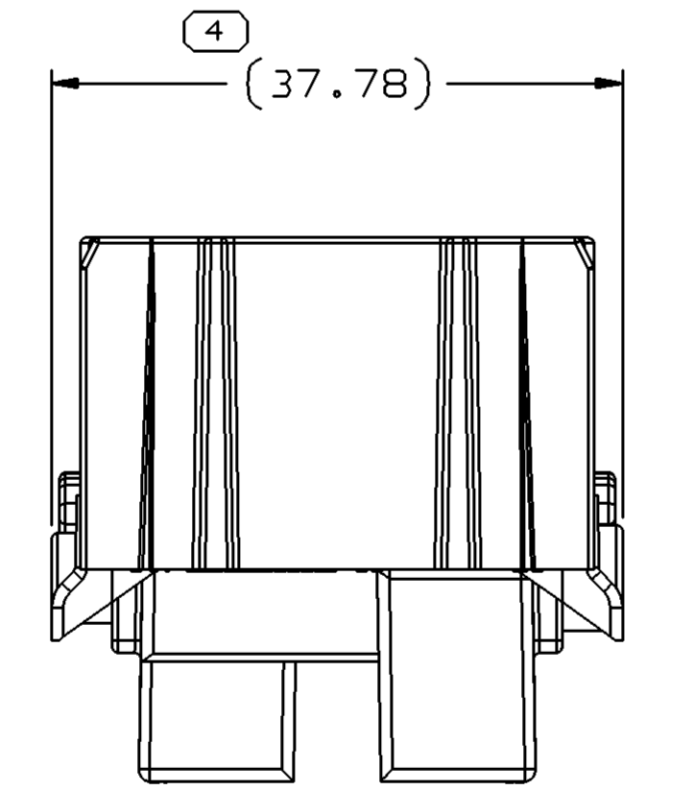
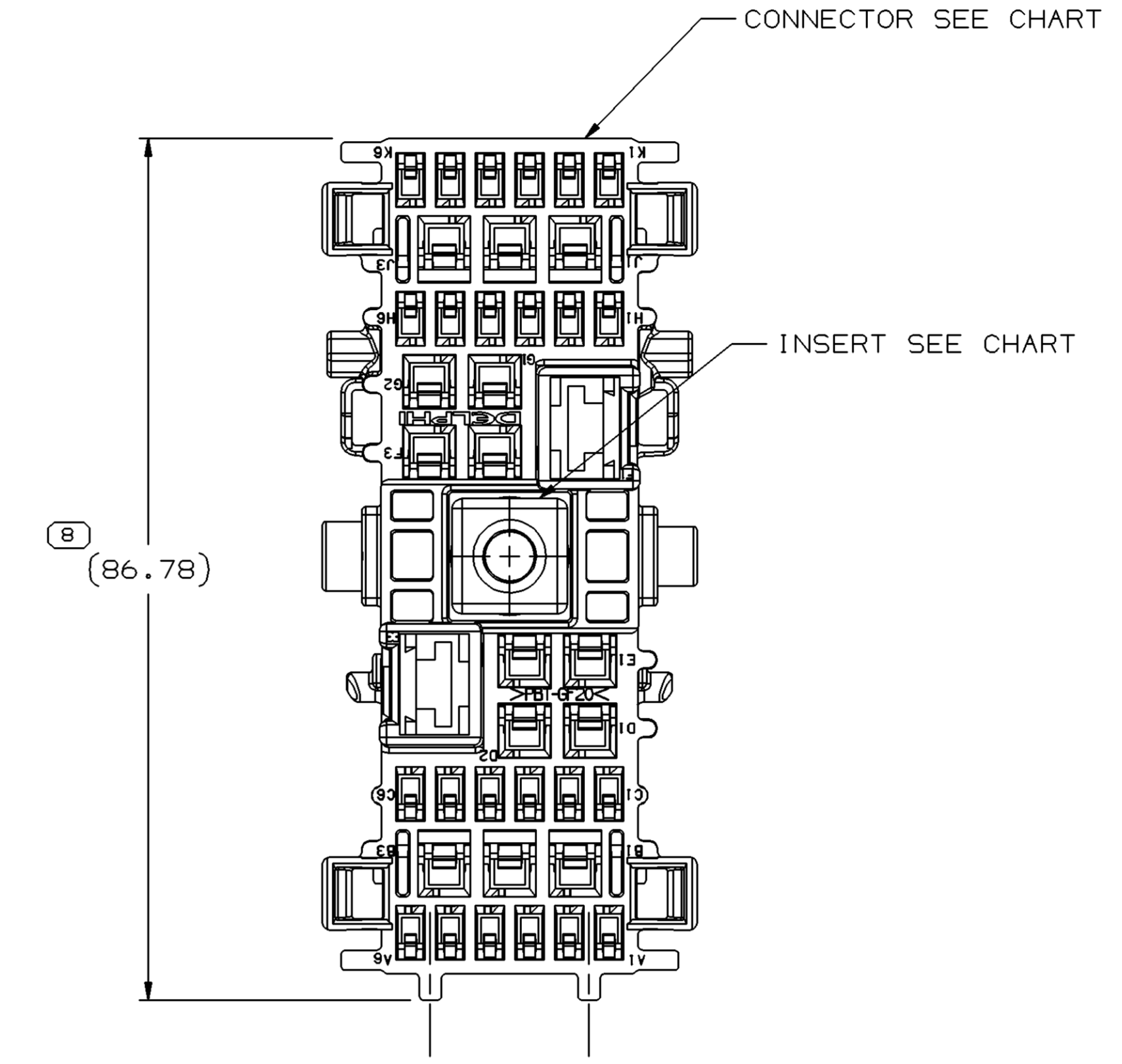
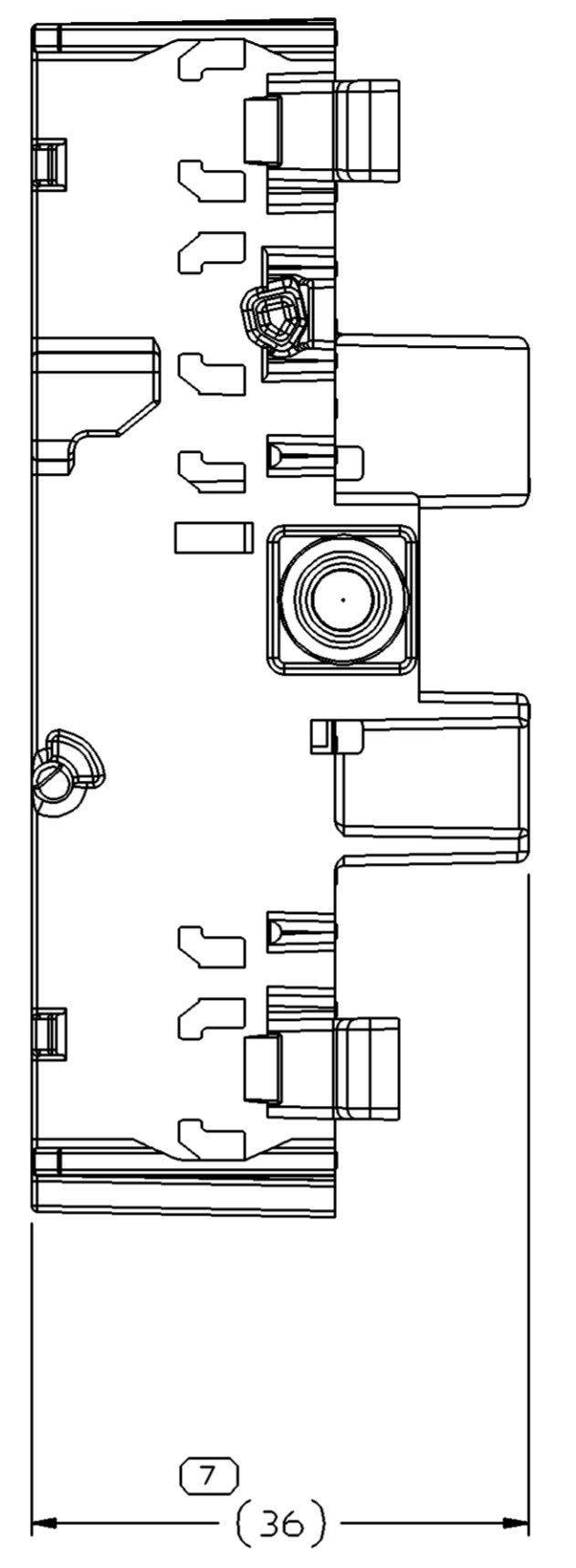
TYPE 103
SAME AS TYPE 101
EXCEPT AS SHOWN



TYPE 102
SAME AS TYPE 101
EXCEPT AS SHOWN

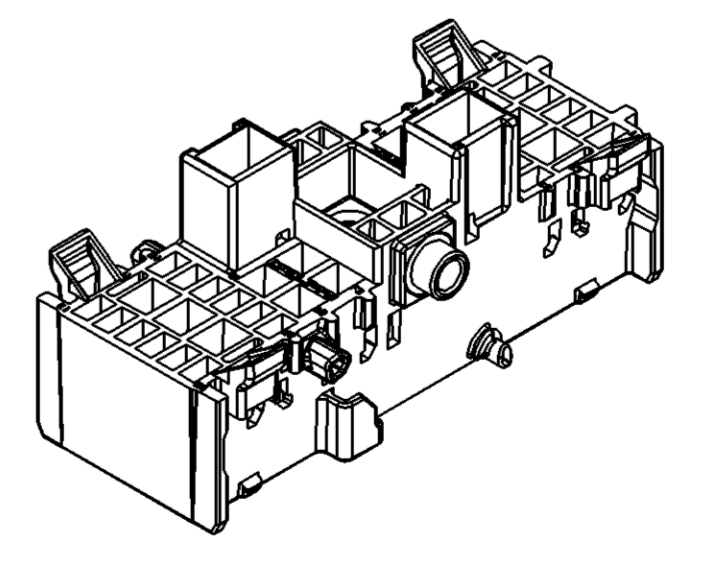


TYPE 101



NOTES

- UNLESS OTHERWISE SPECIFIED AND/OR INDICATED: DIMENSIONS ARE TO FACE OF VIEW SHOWN AND AUTOMATICALLY ROUNDED BY COMPUTER FOR INSPECTION (SEE MATH MODEL FOR PRECISE DIMENSIONS). FOR ALL OTHER DIMENSIONS NOT SHOWN BUT REQUIRED FOR TOOL BUILD, SEE MATH MODEL FOR PRECISE TOOL PATH DATA.
- SEALING CODE 0 - UNSEALED
- THIS PART ACCEPTS THE FOLLOWING COMPONENTS OR EQUIVALENT: CAVITIES A1 TO A6, C1 TO C6, H1 TO H6 & K1 TO K6 TO ACCEPT 12191811 TERMINAL. MAX INSULATION CRIMP MUST BE LESS THAN XX HIGH AND XX WIDE. CAVITIES B1, B2, B3, D1, D2, E1, E2, F2, F3, G1, G2, J1, J2 & J3 TO ACCEPT 15304711 TERMINAL. MAX INSULATION CRIMP MUST BE LESS THAN XX HIGH AND XX WIDE. CAVITIES E3 & F1 TO ACCEPT 12065915 TERMINAL. MAX INSULATION CRIMP MUST BE LESS THAN X HIGH AND X WIDE. SECONDARY TERMINAL LOCK 15477824. WIRE DRESS COVER 13552248.
- ASSEMBLY NUT INSERT PUSH OUT FORCE IS 800 N MINIMUM. ASSEMBLY NUT SHALL NOT RATLLE AFTER CRIMP PROCESS.



TYPE 101

PART NO	REV	N/P	STATUS	TYPE	CONNECTOR	INSERT
13528108	01	-	-	103	13552256	15410323
13528107	01	-	-	102	13552255	15410323
13528106	01	-	-	101	13552254	15410323

DWO TYPE PART DRAWING		STYLE																					
VOLUME (CM³)	DISTR CODE	D																					
UNLESS OTHERWISE SPECIFIED																							
THIS DOCUMENT IS IN ACCORDANCE WITH ASME Y14.5M-1994 AS AMENDED BY THE DIMENSIONING AND TOLERANCING ADDENDUM-2003. SEPARATE PATTERNING OF FEATURES MAY BE GIVEN SEPARATELY REGARDLESS OF DATUM REFERENCES.																							
ALL DIMENSIONS ARE IN MILLIMETERS																							
REFERENCE		THIRD ANGLE PROJECTION																					
<p>PROCESS SENSITIVE DIMENSION</p> <p>DIMENSIONS ENCLOSED IN () INDICATE REFERENCE DIMENSIONS AND NO TOLERANCE LIMITS ARE ESTABLISHED</p>																							
<table border="1"> <thead> <tr> <th>DIMENSIONAL RANGE (MM)</th> <th>TOLERANCE</th> </tr> </thead> <tbody> <tr> <td>FROM > 0 TO > 20</td> <td>±0.15</td> </tr> <tr> <td>> 20 TO > 30</td> <td>±0.2</td> </tr> <tr> <td>> 30 TO > 70</td> <td>±0.3</td> </tr> <tr> <td>> 70 TO > 100</td> <td>±0.4</td> </tr> <tr> <td>> 100 TO > 150</td> <td>±0.5</td> </tr> <tr> <td>> 150 TO > 200</td> <td>±0.6</td> </tr> <tr> <td>> 200 TO > 250</td> <td>±0.8</td> </tr> <tr> <td>> 250 TO > 300</td> <td>±1</td> </tr> <tr> <td>> 300 TO > 400</td> <td>±1.2</td> </tr> </tbody> </table>		DIMENSIONAL RANGE (MM)	TOLERANCE	FROM > 0 TO > 20	±0.15	> 20 TO > 30	±0.2	> 30 TO > 70	±0.3	> 70 TO > 100	±0.4	> 100 TO > 150	±0.5	> 150 TO > 200	±0.6	> 200 TO > 250	±0.8	> 250 TO > 300	±1	> 300 TO > 400	±1.2	<p>DO NOT SCALE</p>	
DIMENSIONAL RANGE (MM)	TOLERANCE																						
FROM > 0 TO > 20	±0.15																						
> 20 TO > 30	±0.2																						
> 30 TO > 70	±0.3																						
> 70 TO > 100	±0.4																						
> 100 TO > 150	±0.5																						
> 150 TO > 200	±0.6																						
> 200 TO > 250	±0.8																						
> 250 TO > 300	±1																						
> 300 TO > 400	±1.2																						

DELPHI
DELPHI PACKARD ELECTRIC SYSTEMS
WARREN, OH

DR	DATE
APVD1 R. CHACON	28MY05
APVD2 R. CHACON	28MY05
APVD3 S. DOMHOFF	30MY05
APVD4	
APVD5	

SUBSTANCES OF CONCERN AND RECYCLED CONTENT PER DELPHI 10949001

MATERIAL SEC. CHART

DRAWING NAME
TAXI ASM CONN 40 F 6T 150 280 N/P 800

DRAWING NUMBER
13530526

SIZE A0 SCALE 2:1 FRAME NO 1 OF 1 SHEET NO 1 OF 1 STG REV N/P 1 R 01