



Series 8XXX Elevator Sockets with Bifurcated Contacts

FEATURES:

- Ideal for elevating devices (displays, switches, etc.) to desired level with .260 to 1.250 [6.60 to 31.75] height extension.

SPECIFICATIONS:

- Standard socket body is red UL 94-HB Glass-filled Nylon.
- High temp socket body is black UL 94V-0 4/6 Nylon.
- Bifurcated contacts are Grade A Phosphor Bronze per QQ-B-750.
- Contact plating is 50-150 μ [1.27-3.81 μ m] 60/40 Tin/Lead Alloy over 50 μ [1.27 μ m] min. Nickel per QQ-N-290. 10 μ [.25 μ m] min. Gold per MIL-G-45204 also available (consult factory).
- Contact current rating=1 Amp.
- Insertion Force=110 grams/pin average; Withdrawal Force=75 grams/pin average.
- Operating temperature=221°F [105°C].
- Accepts flat leads up to .014 thk. x .020 wide [.36-.51], round leads up to .020 [.51] in diameter.
- Socket accepts lead lengths from seating plane .075-.160 [1.91-4.06].

MOUNTING CONSIDERATIONS:

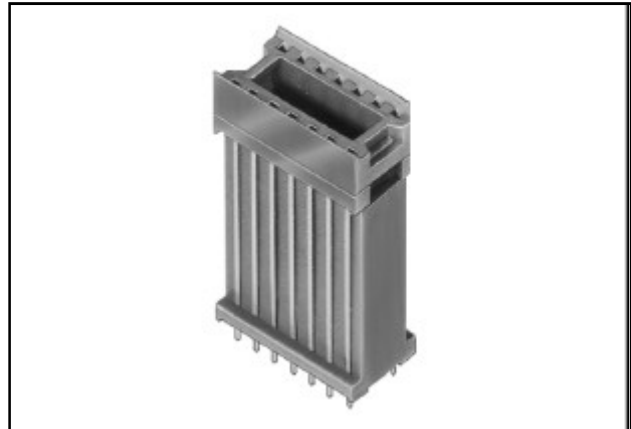
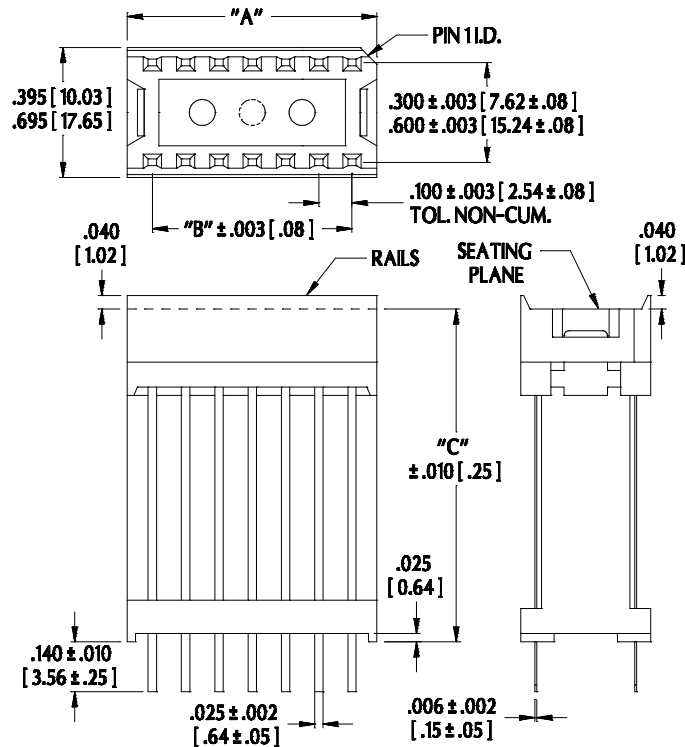
- Suggested PCB hole size=.035 \pm .002 [.89 \pm .05] dia.

ALL DIMENSIONS: INCHES [MILLIMETERS]

All tolerances \pm .005 [.13] unless otherwise specified

"A"=(NO. OF PINS PER ROW X .100 [2.54]) + .050 [1.27]

"B"=(NO. OF PINS PER ROW - 1) X .100 [2.54]



Note: Aries specializes in custom design and production. In addition to the standard products shown on this page, special materials, platings, sizes, and configurations can be furnished, depending on quantities. Aries reserves the right to change product specifications without notice.

ORDERING INFORMATION

XX - X8 XXX - 10 XX

No. of pins:
14, 16, 18

Row-to-row spacing:
8= .300 [7.62] centers
(14 & 16 pin)
68= .600 [15.24] centers
(18 pin only)

Optional suffix:
WR=without rails
V0=UL 94V-0
plastic

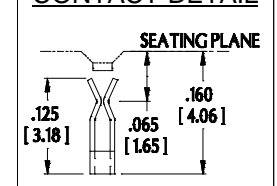
Tin plated solder
tail pin

Dim. "C": seating plane
height (see table)

Part no.	Dim. "C"
10-28440-10	.440 [11.18]
14-8260-10	.260 [6.60]
14-8350-10	.350 [8.89]
14-8400-10	.400 [10.16]
14-8435-10	.440 [11.17]
14-8470-10	.470 [11.93]
14-8510-10	.510 [12.95]
14-8620-10	.620 [15.74]
14-8770-10	.770 [19.55]
14-8870-10	.870 [22.09]
14-81000-10	1.000 [25.40]
14-81100-10	1.100 [27.94]
14-81187-10	1.180 [29.97]
14-81250-10	1.250 [31.75]
16-8430-10	.430 [10.92]
16-8480-10	.480 [12.19]
16-8700-10	.700 [17.78]
16-8810-10	.810 [20.57]
16-81250-10	1.250 [31.75]
18-68500-10	.500 [12.70]
18-68587-10	.587 [14.90]
18-68660-10	.660 [16.76]
18-681250-10	1.250 [31.75]

Elevator sockets with
collet contacts also
available. Consult
Data Sheet Nos.
13007 and 13008.

CONTACT DETAIL



http://www.arieselec.com • info@arieselec.com

NORTH AMERICA
Frenchtown, NJ USA
TEL: (908) 996-6841
FAX: (908) 996-3891



EUROPE
TEL: +44 870 240 0249
FAX: +44 871 919 6033
europe@arieselec.com

13006
REV.D