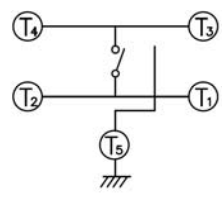
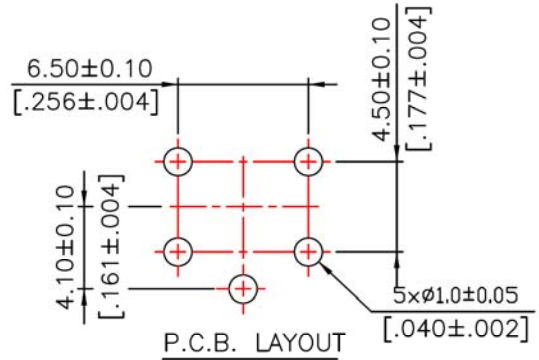


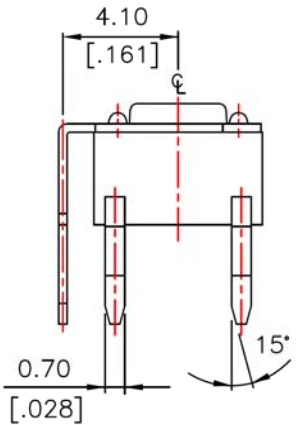
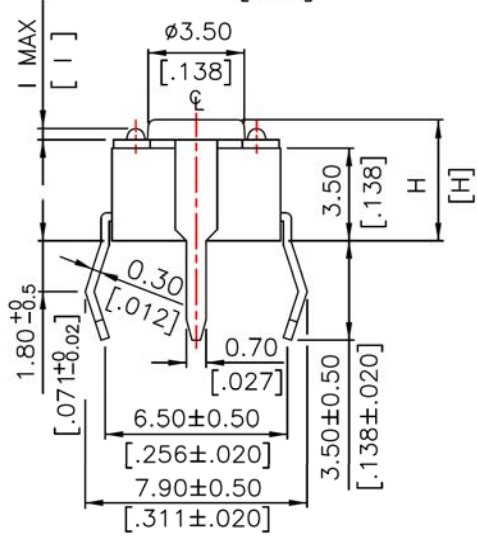
**NOTE:**  
 1.ALL DIMENSIONS ARE IN MILLIMETERS,BRACKETED DIMENSIONS ARE IN INCHES.  
 2.GENERAL TOLERANCES MAX.±0.20mm.



CIRCUIT DIAGRAM



P.C.B. LAYOUT



Series	Type	DIM (mm) H/I	Operating Force/ Color
SWT	DTSG6	X	X
Switch	Tactile Switch with Ground Terminal	1=4.3/0.4 2=5.0/0.5 3=7.0/0.5 5=9.5/0.5 6=13.0/0.5	K=100g, Black N=160g, Brown R=260g, Red S=320g, Salmon Y=520g, Yellow

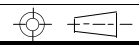
RoHS compliant

Rev.	Description	Date	Approved	Drawing	Name	Date
				Approved	Howard	06/27/12
				Checked	Lizzy	06/27/12
				Drawn	Tina	06/27/12
				0.0 ± 0.35	0.00 ± 0.20	Angles ± 3'

**Central Components Manufacturing**  
 440 Lincoln Blvd., Middlesex, New Jersey 08846  
 Phone 732 469-5720 888 288-5152 Fax 732 469-1919

Part No.: **SWT-DTSG6-X-X**

Description: Tactile Switch with Ground Terminal



UNIT: mm