

To our customers,

---

## Old Company Name in Catalogs and Other Documents

---

On April 1<sup>st</sup>, 2010, NEC Electronics Corporation merged with Renesas Technology Corporation, and Renesas Electronics Corporation took over all the business of both companies. Therefore, although the old company name remains in this document, it is a valid Renesas Electronics document. We appreciate your understanding.

Renesas Electronics website: <http://www.renesas.com>

April 1<sup>st</sup>, 2010  
Renesas Electronics Corporation

Issued by: Renesas Electronics Corporation (<http://www.renesas.com>)

Send any inquiries to <http://www.renesas.com/inquiry>.

## Notice

1. All information included in this document is current as of the date this document is issued. Such information, however, is subject to change without any prior notice. Before purchasing or using any Renesas Electronics products listed herein, please confirm the latest product information with a Renesas Electronics sales office. Also, please pay regular and careful attention to additional and different information to be disclosed by Renesas Electronics such as that disclosed through our website.
2. Renesas Electronics does not assume any liability for infringement of patents, copyrights, or other intellectual property rights of third parties by or arising from the use of Renesas Electronics products or technical information described in this document. No license, express, implied or otherwise, is granted hereby under any patents, copyrights or other intellectual property rights of Renesas Electronics or others.
3. You should not alter, modify, copy, or otherwise misappropriate any Renesas Electronics product, whether in whole or in part.
4. Descriptions of circuits, software and other related information in this document are provided only to illustrate the operation of semiconductor products and application examples. You are fully responsible for the incorporation of these circuits, software, and information in the design of your equipment. Renesas Electronics assumes no responsibility for any losses incurred by you or third parties arising from the use of these circuits, software, or information.
5. When exporting the products or technology described in this document, you should comply with the applicable export control laws and regulations and follow the procedures required by such laws and regulations. You should not use Renesas Electronics products or the technology described in this document for any purpose relating to military applications or use by the military, including but not limited to the development of weapons of mass destruction. Renesas Electronics products and technology may not be used for or incorporated into any products or systems whose manufacture, use, or sale is prohibited under any applicable domestic or foreign laws or regulations.
6. Renesas Electronics has used reasonable care in preparing the information included in this document, but Renesas Electronics does not warrant that such information is error free. Renesas Electronics assumes no liability whatsoever for any damages incurred by you resulting from errors in or omissions from the information included herein.
7. Renesas Electronics products are classified according to the following three quality grades: “Standard”, “High Quality”, and “Specific”. The recommended applications for each Renesas Electronics product depends on the product’s quality grade, as indicated below. You must check the quality grade of each Renesas Electronics product before using it in a particular application. You may not use any Renesas Electronics product for any application categorized as “Specific” without the prior written consent of Renesas Electronics. Further, you may not use any Renesas Electronics product for any application for which it is not intended without the prior written consent of Renesas Electronics. Renesas Electronics shall not be in any way liable for any damages or losses incurred by you or third parties arising from the use of any Renesas Electronics product for an application categorized as “Specific” or for which the product is not intended where you have failed to obtain the prior written consent of Renesas Electronics. The quality grade of each Renesas Electronics product is “Standard” unless otherwise expressly specified in a Renesas Electronics data sheets or data books, etc.
  - “Standard”: Computers; office equipment; communications equipment; test and measurement equipment; audio and visual equipment; home electronic appliances; machine tools; personal electronic equipment; and industrial robots.
  - “High Quality”: Transportation equipment (automobiles, trains, ships, etc.); traffic control systems; anti-disaster systems; anti-crime systems; safety equipment; and medical equipment not specifically designed for life support.
  - “Specific”: Aircraft; aerospace equipment; submersible repeaters; nuclear reactor control systems; medical equipment or systems for life support (e.g. artificial life support devices or systems), surgical implantations, or healthcare intervention (e.g. excision, etc.), and any other applications or purposes that pose a direct threat to human life.
8. You should use the Renesas Electronics products described in this document within the range specified by Renesas Electronics, especially with respect to the maximum rating, operating supply voltage range, movement power voltage range, heat radiation characteristics, installation and other product characteristics. Renesas Electronics shall have no liability for malfunctions or damages arising out of the use of Renesas Electronics products beyond such specified ranges.
9. Although Renesas Electronics endeavors to improve the quality and reliability of its products, semiconductor products have specific characteristics such as the occurrence of failure at a certain rate and malfunctions under certain use conditions. Further, Renesas Electronics products are not subject to radiation resistance design. Please be sure to implement safety measures to guard them against the possibility of physical injury, and injury or damage caused by fire in the event of the failure of a Renesas Electronics product, such as safety design for hardware and software including but not limited to redundancy, fire control and malfunction prevention, appropriate treatment for aging degradation or any other appropriate measures. Because the evaluation of microcomputer software alone is very difficult, please evaluate the safety of the final products or system manufactured by you.
10. Please contact a Renesas Electronics sales office for details as to environmental matters such as the environmental compatibility of each Renesas Electronics product. Please use Renesas Electronics products in compliance with all applicable laws and regulations that regulate the inclusion or use of controlled substances, including without limitation, the EU RoHS Directive. Renesas Electronics assumes no liability for damages or losses occurring as a result of your noncompliance with applicable laws and regulations.
11. This document may not be reproduced or duplicated, in any form, in whole or in part, without prior written consent of Renesas Electronics.
12. Please contact a Renesas Electronics sales office if you have any questions regarding the information contained in this document or Renesas Electronics products, or if you have any other inquiries.

(Note 1) “Renesas Electronics” as used in this document means Renesas Electronics Corporation and also includes its majority-owned subsidiaries.

(Note 2) “Renesas Electronics product(s)” means any product developed or manufactured by or for Renesas Electronics.



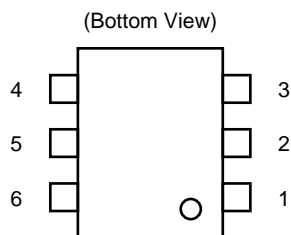
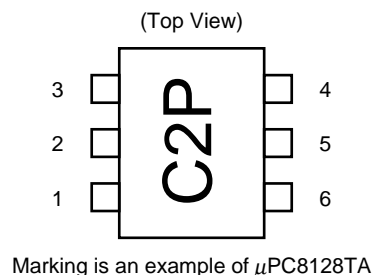
**ORDERING INFORMATION**

Part Number	Package	Marking	Feature	Supplying Form
$\mu$ PC8128TA-E3	6-pin minimold	C2P	2.8 mA Low I <sub>CC</sub>	Embossed tape 8 mm wide. 1, 2, 3 pins face the perforation side of the tape. Qty 3 kpcs/reel.
$\mu$ PC8151TA-E3		C2U	4 mA High P <sub>O</sub>	
$\mu$ PC8152TA-E3		C2V	5 mA High G <sub>P</sub>	

**Remark** To order evaluation samples, please contact your local NEC sales office.

(Part number for sample order:  $\mu$ PC8128TA,  $\mu$ PC8151TA,  $\mu$ PC8152TA)

**PIN CONNECTIONS**



Pin No.	Pin Name
1	INPUT
2	GND
3	GND
4	OUTPUT
5	GND
6	V <sub>CC</sub>

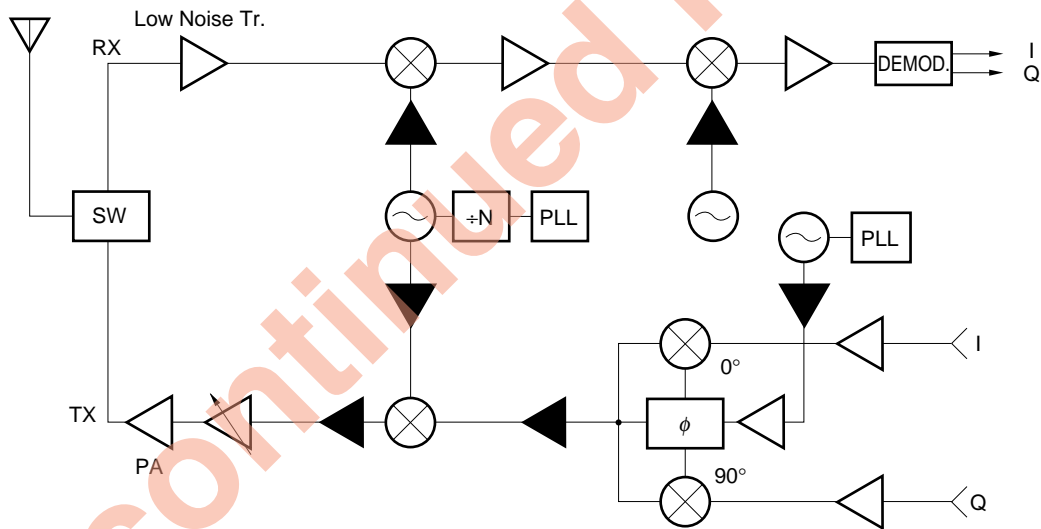
★ **PRODUCT LINE-UP** ( $T_A = +25\text{ }^\circ\text{C}$ ,  $V_{CC} = V_{out} = 3.0\text{ V}$ ,  $Z_S = Z_L = 50\ \Omega$ )

Parameter Part No.	I <sub>cc</sub> (mA)	1.00 GHz output port matching frequency			1.66 GHz output port matching frequency			1.90 GHz output port matching frequency			Package	Marking
		G <sub>P</sub> (dB)	ISL (dB)	P <sub>O</sub> (1 dB) (dB)	G <sub>P</sub> (dB)	ISL (dB)	P <sub>O</sub> (1 dB) (dB)	G <sub>P</sub> (dB)	ISL (dB)	P <sub>O</sub> (1 dB) (dB)		
$\mu$ PC8128TA	2.8	12.5	39	-4.0	13	39	-4.0	13	37	-4.0	6-pin minimold	C2P
$\mu$ PC8128TB											6-pin super minimold	
$\mu$ PC8151TA	4.2	12.5	38	+2.5	15	36	+1.5	15	34	+0.5	6-pin minimold	C2U
$\mu$ PC8151TB											6-pin super minimold	
$\mu$ PC8152TA	5.6	23	40	-4.5	19.5	38	-8.5	17.5	35	-8.5	6-pin minimold	C2V
$\mu$ PC8152TB											6-pin super minimold	

**Remark** Typical performance. Please refer to ELECTRICAL CHARACTERISTICS in detail.

**SYSTEM APPLICATION EXAMPLE**

Location examples in digital cellular



These ICs can be added to your system around ▲ parts, when you need more isolation or gain. The application herein, however, shows only examples, therefore the application can depend on your kit evaluation.

PIN EXPLANATION

Pin No.	Pin Name	Applied Voltage (V)	Pin Voltage (V) <sup>Note</sup>	Function and Applications	Internal Equivalent Circuit
1	INPUT	–	0.90 ----- 1.06 ----- 0.80	Signal input pin. A internal matching circuit, configured with resistors, enables 50 $\Omega$ connection over a wide band. This pin must be coupled to signal source with capacitor for DC cut.	<p><math>\mu</math>PC8128TA, <math>\mu</math>PC8151TA</p>
2 3 5	GND	0	–	Ground pin. This pin should be connected to system ground with minimum inductance. Ground pattern on the board should be formed as wide as possible. All the ground pins must be connected together with wide ground pattern to decrease impedance difference.	
4	OUTPUT	voltage as same as Vcc through external inductor	–	Signal output pin. This pin is designed as collector output. Due to the high impedance output, this pin should be externally equipped with LC matching circuit to next stage. For L, a size 1005 chip inductor can be chosen.	<p><math>\mu</math>PC8152TA</p>
6	Vcc	2.4 to 3.3	–	Power supply pin. This pin should be externally equipped with bypass capacitor to minimize its impedance.	

**Note** Pin voltage is measured at Vcc = 3.0 V. Above:  $\mu$ PC8128TA, Center:  $\mu$ PC8151TA, Below:  $\mu$ PC8152TA

**ABSOLUTE MAXIMUM RATINGS**

Parameter	Symbol	Conditions	Ratings	Unit
Supply Voltage	V <sub>CC</sub>	T <sub>A</sub> = +25°C, Pin 4, Pin 6	3.6	V
Total Circuit Current	I <sub>CC</sub>	T <sub>A</sub> = +25°C	15	mA
Total Power Dissipation	P <sub>D</sub>	Mounted on double sided copper clad 50 × 50 × 1.6 mm epoxy glass PWB (T <sub>A</sub> = +85°C)	280	mW
Operating Ambient Temperature	T <sub>A</sub>		-40 to +85	°C
Storage Temperature	T <sub>stg</sub>		-55 to +150	°C
Input Power	P <sub>in</sub>	T <sub>A</sub> = +25°C	+5	dBm

**RECOMMENDED OPERATING CONDITIONS**

Parameter	Symbol	MIN.	TYP.	MAX.	Unit	Remarks
Supply Voltage	V <sub>CC</sub>	2.4	3.0	3.3	V	The same voltage should be applied to pin 4 and pin 6.
Operating Ambient Temperature	T <sub>A</sub>	-40	+25	+85	°C	
Operating Frequency	f	0.1	-	1.9	GHz	Matched output port with external LC

Discontinued Product

**ELECTRICAL CHARACTERISTICS (Unless otherwise specified,  $T_A = +25^\circ\text{C}$ ,  $V_{CC} = V_{out} = 3.0\text{ V}$ ,  $Z_s = Z_L = 50\ \Omega$ , at LC matched frequency)**

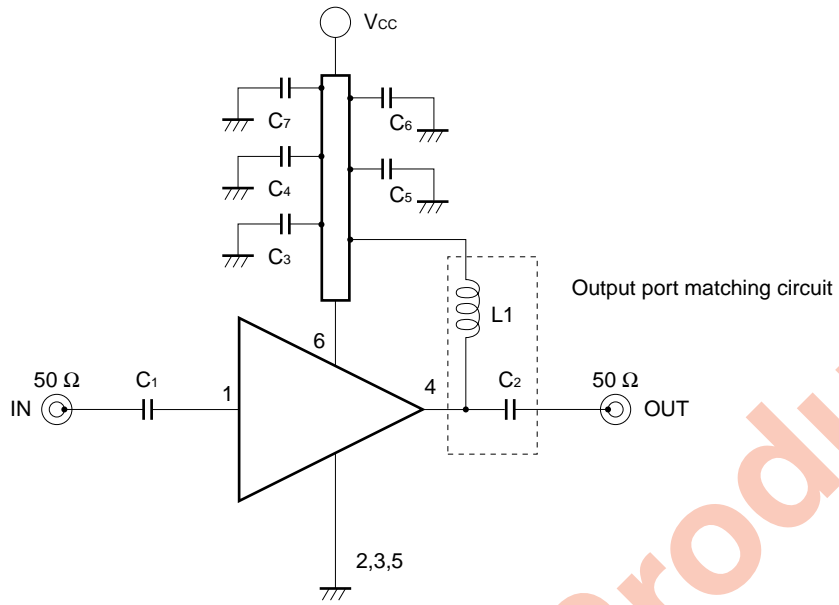
Parameter	Symbol	Conditions	$\mu$ PC8128TA			$\mu$ PC8151TA			$\mu$ PC8152TA			Unit
			MIN.	TYP.	MAX.	MIN.	TYP.	MAX.	MIN.	TYP.	MAX.	
Circuit Current	$I_{CC}$	No signal	1.8	2.8	3.8	2.8	4.2	5.8	4.2	5.6	7.1	mA
Power Gain	$G_P$	$f = 1.00\text{ GHz}$	9.5	12.5	14.5	9.5	12.5	14.5	20	23	25	dB
		$f = 1.66\text{ GHz}$	10	13	15	12	15	17	16.5	19.5	21.5	
		$f = 1.90\text{ GHz}$	10	13	15	12	15	17	14.5	17.5	19.5	
Isolation	ISL	$f = 1.00\text{ GHz}$	34	39	–	33	38	–	35	40	–	dB
		$f = 1.66\text{ GHz}$	34	39	–	31	36	–	33	38	–	
		$f = 1.90\text{ GHz}$	32	37	–	29	34	–	30	35	–	
Gain 1 dB Compression Output Power	$P_{O(1\text{ dB})}$	$f = 1.00\text{ GHz}$	–7.5	–4.0	–	–1.0	+2.5	–	–7.5	–4.5	–	dBm
		$f = 1.66\text{ GHz}$	–8.5	–4.0	–	–2.5	+1.5	–	–11.5	–8.5	–	
		$f = 1.90\text{ GHz}$	–8.5	–4.0	–	–3.0	+0.5	–	–11.5	–8.5	–	
Saturated Output Power <sup>Note</sup> ( $P_{in} = -6\text{ dBm}$ )	$P_{O(sat)}$	$f = 1.00\text{ GHz}$	–	–	–	–	–	–	–2.5	+0.5	–	dBm
		$f = 1.66\text{ GHz}$	–	–	–	–	–	–	–5.5	–2.5	–	
		$f = 1.90\text{ GHz}$	–	–	–	–	–	–	–6.0	–3.0	–	
Noise Figure	NF	$f = 1.00\text{ GHz}$	–	6.0	7.5	–	6.0	7.5	–	3.5	5.0	dB
		$f = 1.66\text{ GHz}$	–	6.0	7.5	–	6.0	7.5	–	4.0	5.5	
		$f = 1.90\text{ GHz}$	–	6.0	7.5	–	6.0	7.5	–	4.5	6.0	
Input Return Loss (Without matching circuit)	$RL_{in}$	$f = 1.00\text{ GHz}$	2	5	–	2	5	–	8.5	11.5	–	dB
		$f = 1.66\text{ GHz}$	2	5	–	1	4	–	7.5	10.5	–	
		$f = 1.90\text{ GHz}$	2.5	5.5	–	1	4	–	8.5	11.5	–	

**Note** Saturated output power is specified only in  $\mu$ PC8152TA which has flat saturated region.

**STANDARD CHARACTERISTICS (Unless otherwise specified,  $T_A = +25^\circ\text{C}$ ,  $V_{CC} = V_{out} = 3.0\text{ V}$ ,  $Z_s = Z_L = 50\ \Omega$ , at LC matched frequency)**

Parameter	Symbol	Conditions	Reference Value			Unit
			$\mu$ PC8128TA	$\mu$ PC8151TA	$\mu$ PC8152TA	
Output Return Loss (With external matching circuit)	$RL_{out}$	$f = 1.00\text{ GHz}$	10	10	15	dB
		$f = 1.66\text{ GHz}$	25	18	7.5	
		$f = 1.90\text{ GHz}$	14	12	7	
3rd Order Intermodulation Distortion ( $P_{O(\text{each})} = -20\text{ dBm}$ )	$IM_3$	$f_1 = 1.000\text{ GHz}$ , $f_2 = 1.001\text{ GHz}$	–50	–62	–51	dBc
		$f_1 = 1.660\text{ GHz}$ , $f_2 = 1.661\text{ GHz}$	–46	–56	–43	
		$f_1 = 1.900\text{ GHz}$ , $f_2 = 1.901\text{ GHz}$	–46	–54	–42	

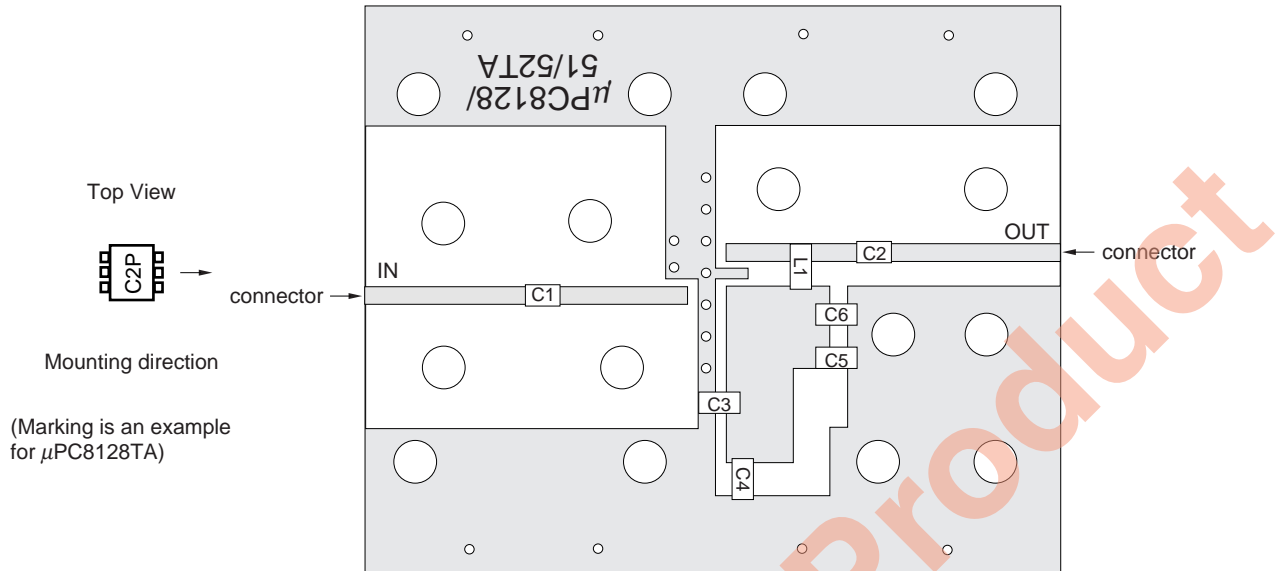
TEST CIRCUIT



Discontinued Product

ILLUSTRATION OF THE TEST CIRCUIT ASSEMBLED ON EVALUATION BOARD

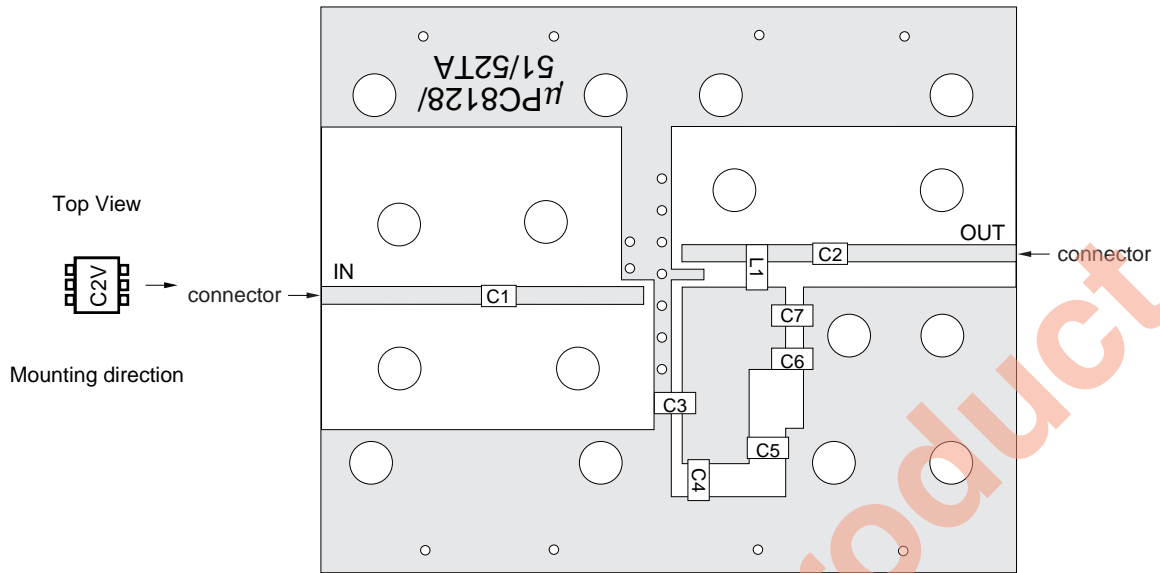
$\mu$ PC8128TA/ $\mu$ PC8151TA



COMPONENT LIST

	1.00 GHz output port matching	1.66 GHz output port matching	1.90 GHz output port matching
C1, C3 to C6	1 000 pF	1 000 pF	1 000 pF
C2	1.0 pF	0.75 pF	0.75 pF
L1	8.2 nH	3.3 nH	2.7 nH

$\mu$ PC8152TA



COMPONENT LIST

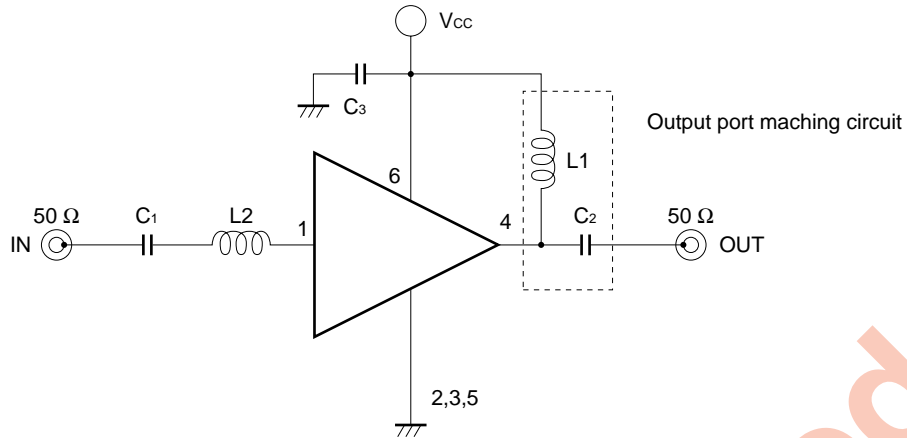
	1.00 GHz output port matching	1.66 GHz output port matching	1.90 GHz output port matching
C1, C3 to C7	1 000 pF	1 000 pF	1 000 pF
C2	1.5 pF	1.0 pF	1.5 pF
L1	8.2 nH	2.7 nH	1.8 nH

NOTES ( $\mu$ PC8128TA,  $\mu$ PC8151TA,  $\mu$ PC8152TA in common)

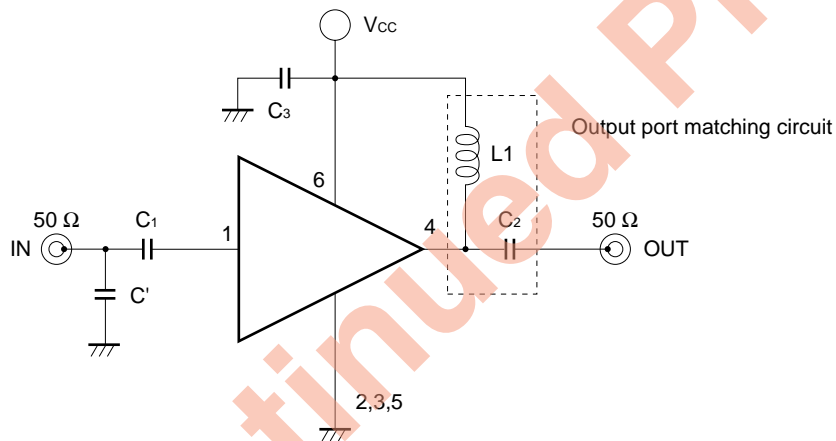
1. 42 × 35 × 0.4 mm double sided copper clad polyimide board.
2. Back side: GND pattern
3. Solder plated on pattern
4. ○ ○ ○ : Through holes

**EXAMPLE OF APPLICATION CIRCUIT ( $\mu$ PC8128TA,  $\mu$ PC8151TA)**

In improving  $R_{Lin}$  of  $\mu$ PC8128TA and  $\mu$ PC8151TA at 1.00 GHz, L2 should be attached.



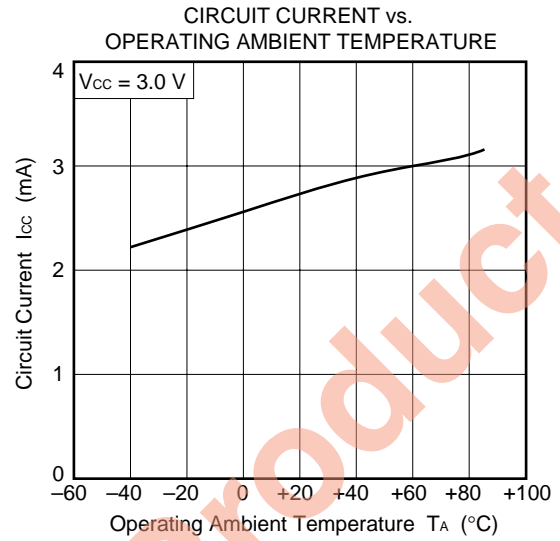
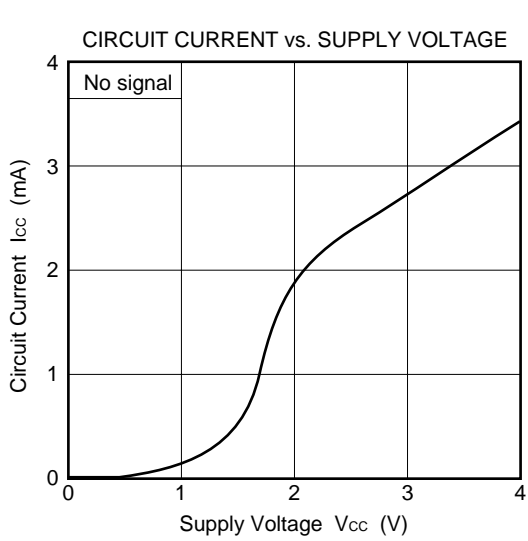
In improving  $R_{Lin}$  of  $\mu$ PC8128TA and  $\mu$ PC8151TA at 1.66 to 1.90 GHz,  $C'$  should be attached.



Discontinued Product

★ TYPICAL CHARACTERISTICS (Unless otherwise specified,  $T_A = +25^\circ\text{C}$ )

–  $\mu$ PC8128TA –



Discontinued Product

-  $\mu$ PC8128TA -

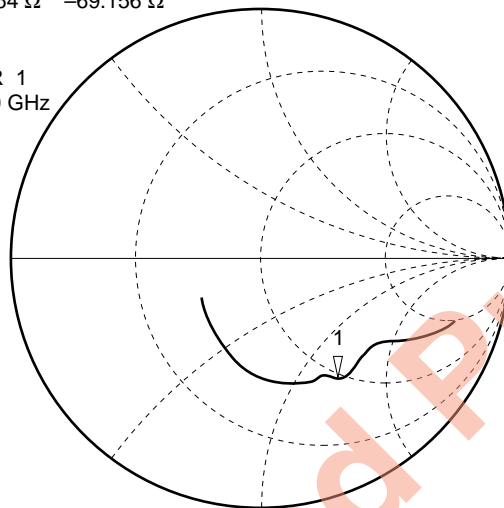
1.00 GHz OUTPUT PORT MATCHING

S-PARAMETERS (monitored at connector on board)

$T_A = +25^\circ\text{C}$ ,  $V_{CC} = V_{out} = 3.0\text{ V}$

S<sub>11</sub>  
 REF 1.0 Units  
 1 200.0 mUnits/  
 ▽ 45.664  $\Omega$  -69.156  $\Omega$

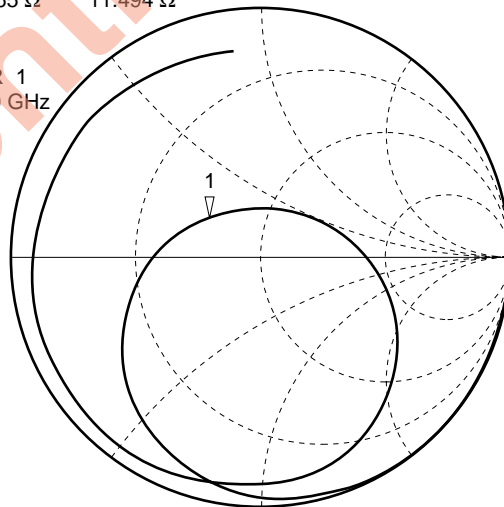
MARKER 1  
 1.0 GHz



START 0.10000000 GHz  
 STOP 3.10000000 GHz

S<sub>22</sub>  
 REF 1.0 Units  
 1 200.0 mUnits/  
 ▽ 30.865  $\Omega$  11.494  $\Omega$

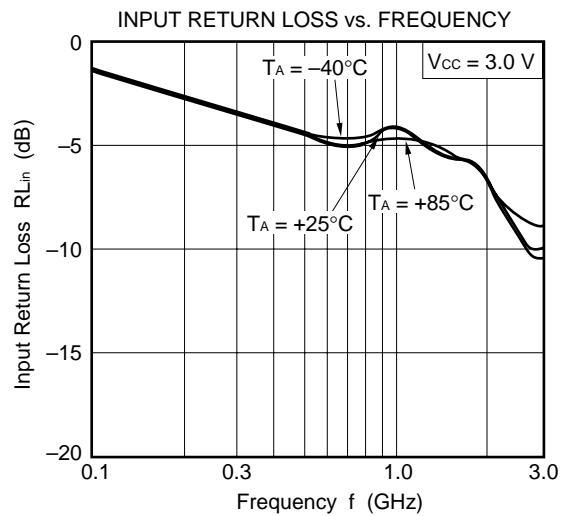
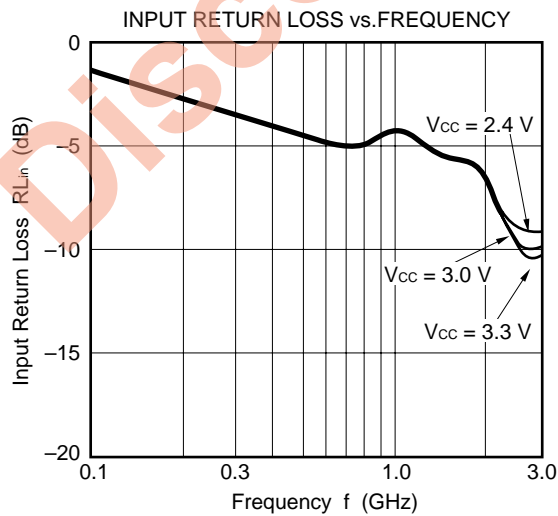
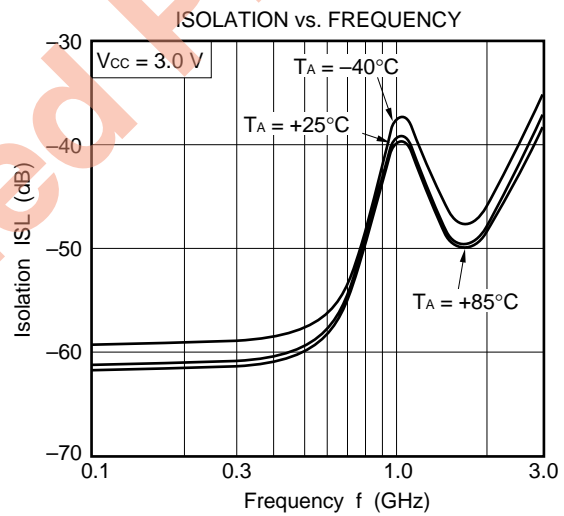
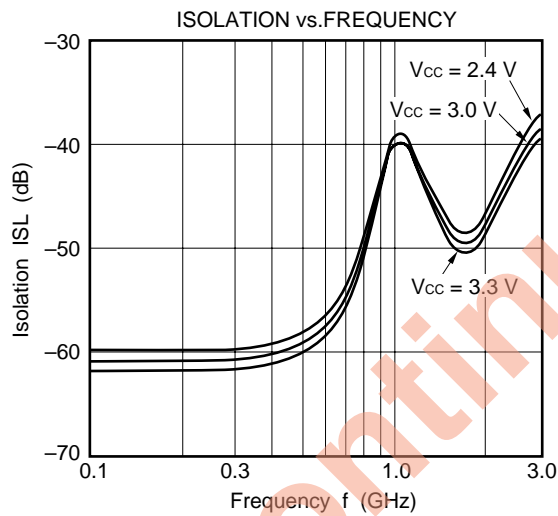
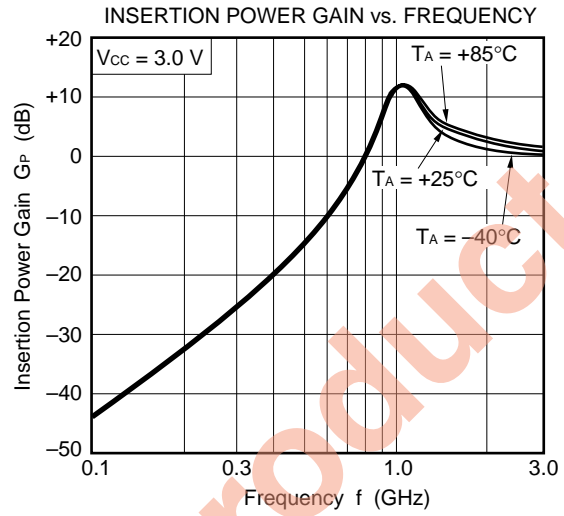
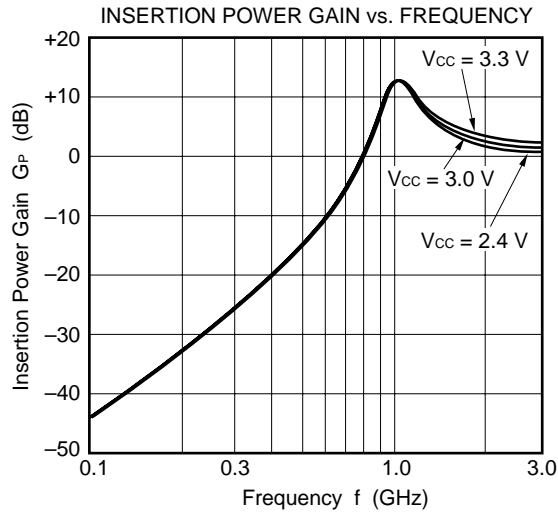
MARKER 1  
 1.0 GHz



START 0.10000000 GHz  
 STOP 3.10000000 GHz

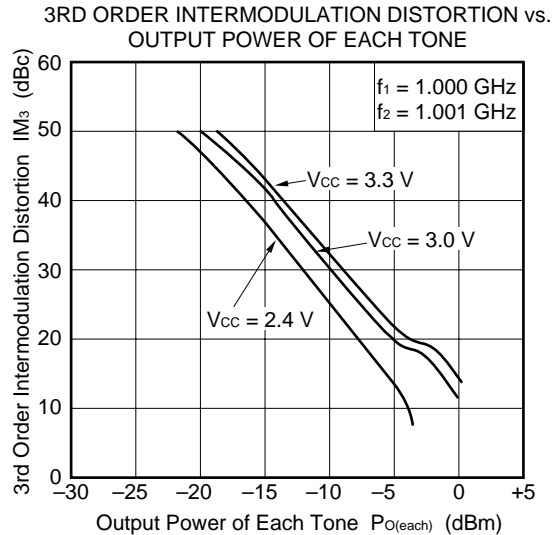
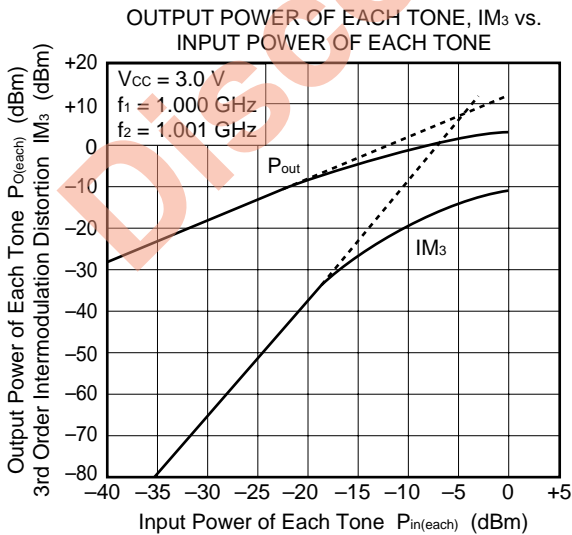
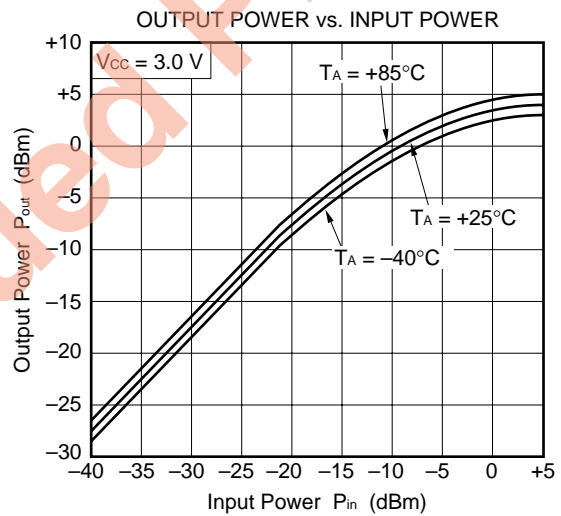
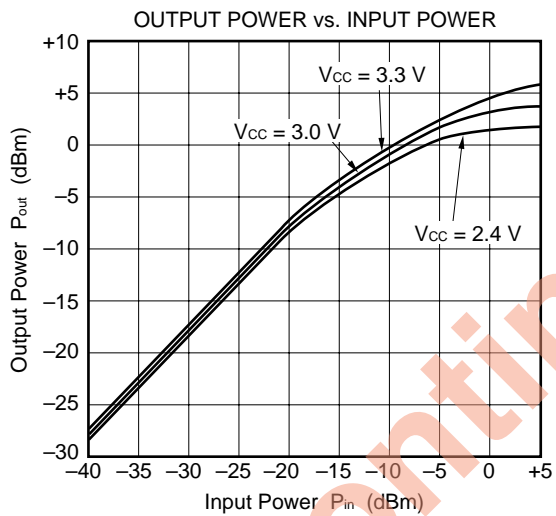
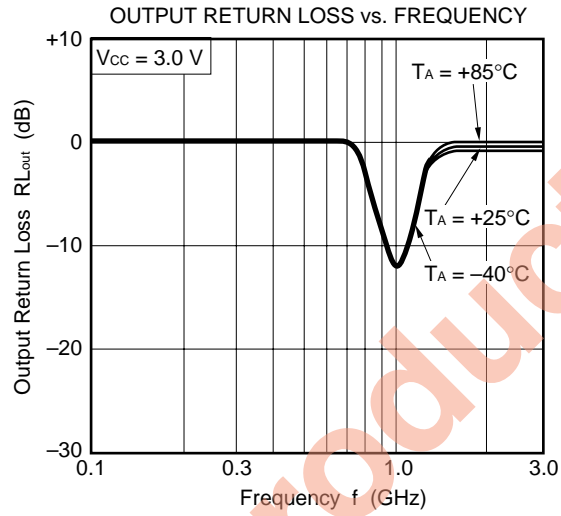
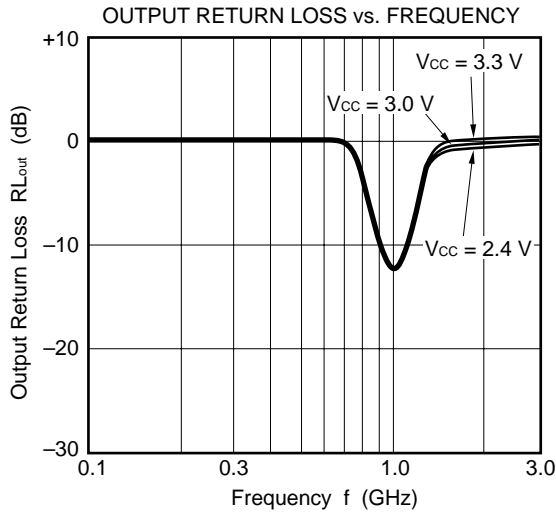
-  $\mu$ PC8128TA -

1.00 GHz OUTPUT PORT MATCHING



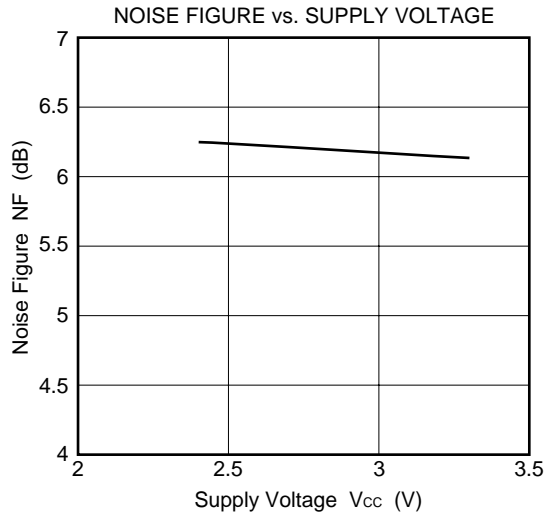
-  $\mu$ PC8128TA -

1.00 GHz OUTPUT PORT MATCHING



-  $\mu$ PC8128TA -

1.00 GHz OUTPUT PORT MATCHING



Discontinued Product

–  $\mu$ PC8128TA –

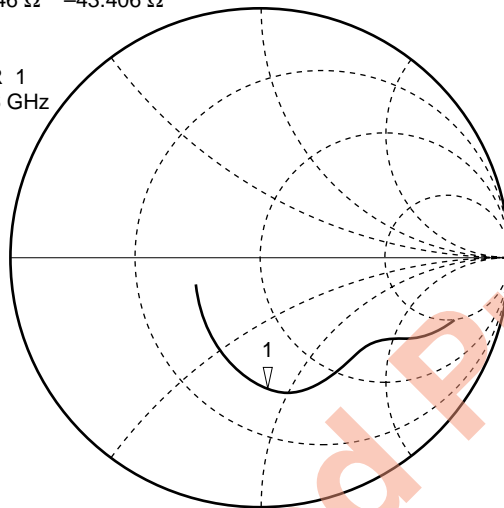
1.66 GHz OUTPUT PORT MATCHING

S-PARAMETERS (monitored at connector on board)

$T_A = +25^\circ\text{C}$ ,  $V_{CC} = V_{out} = 3.0\text{ V}$

S<sub>11</sub>  
 REF 1.0 Units  
 1 200.0 mUnits/  
 ▽ 27.846  $\Omega$  -43.406  $\Omega$

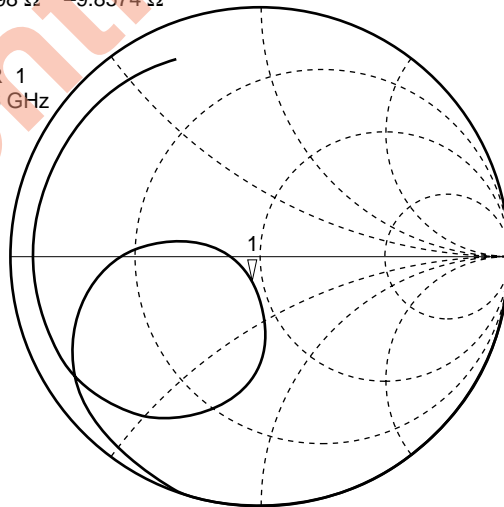
MARKER 1  
 1.66 GHz



START 0.10000000 GHz  
 STOP 3.10000000 GHz

S<sub>22</sub>  
 REF 1.0 Units  
 1 200.0 mUnits/  
 ▽ 46.598  $\Omega$  -9.8574  $\Omega$

MARKER 1  
 1.66 GHz

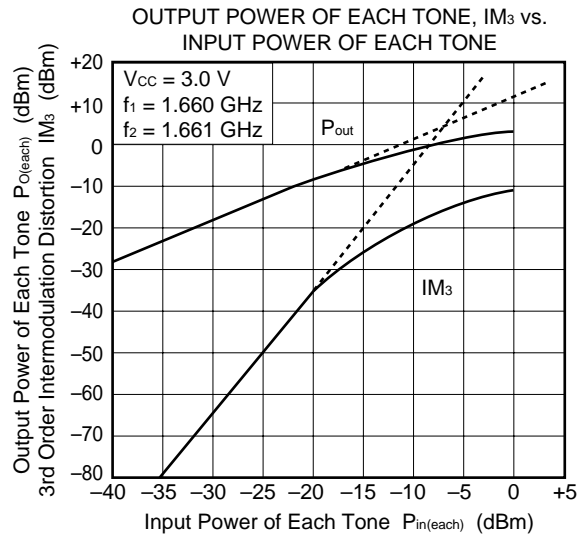
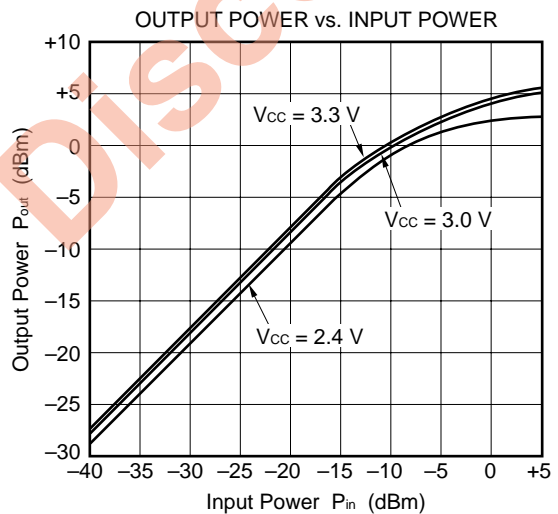
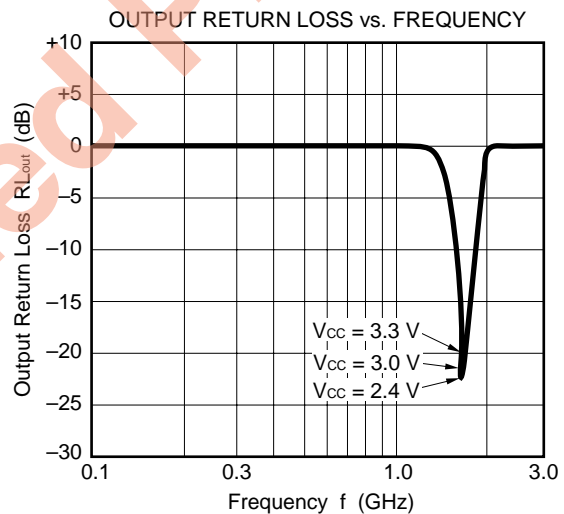
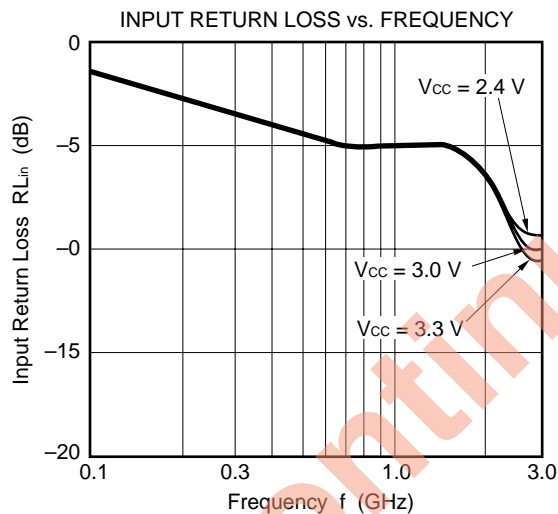
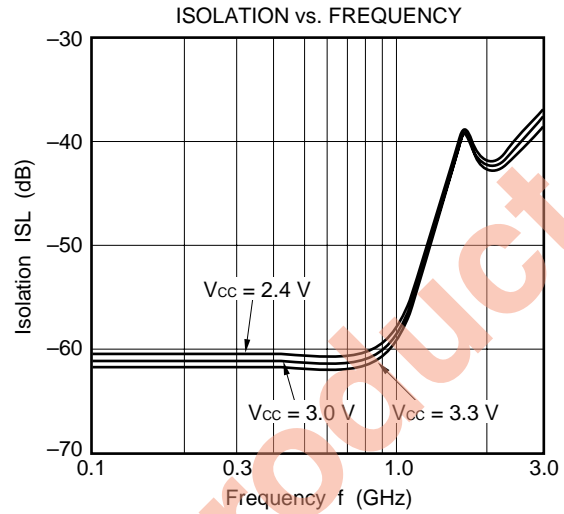
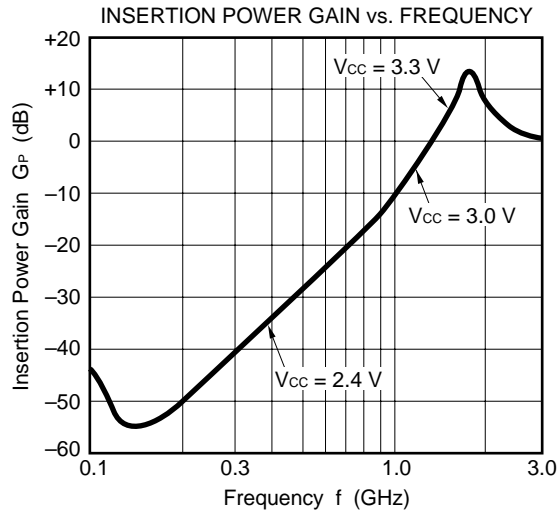


START 0.10000000 GHz  
 STOP 3.10000000 GHz

Discontinued Product

-  $\mu$ PC8128TA -

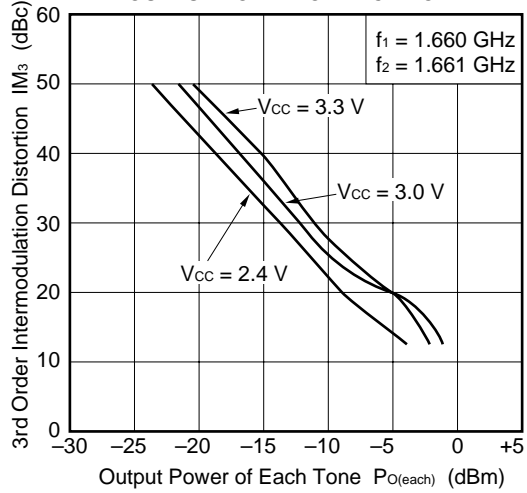
1.66 GHz OUTPUT PORT MATCHING



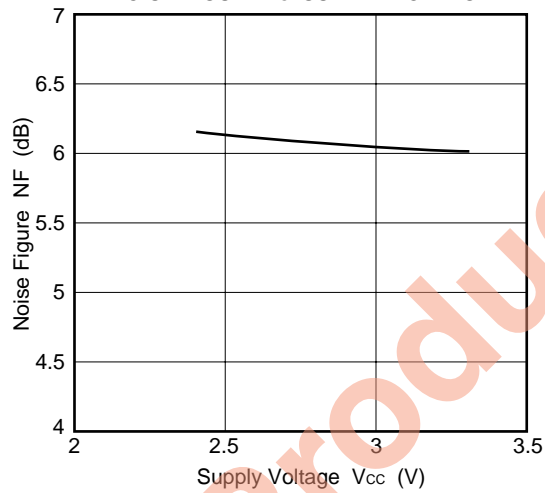
-  $\mu$ PC8128TA -

1.66 GHz OUTPUT PORT MATCHING

3RD ORDER INTERMODULATION DISTORTION vs. OUTPUT POWER OF EACH TONE



NOISE FIGURE vs. SUPPLY VOLTAGE



Discontinued Product

-  $\mu$ PC8128TA -

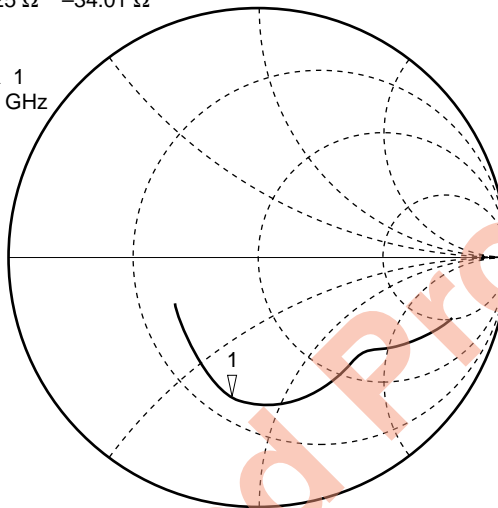
1.90 GHz OUTPUT PORT MATCHING

S-PARAMETERS (monitored at connector on board)

$T_A = +25^\circ\text{C}$ ,  $V_{CC} = V_{out} = 3.0\text{ V}$

S<sub>11</sub>  
 REF 1.0 Units  
 1 200.0 mUnits/  
 $\nabla$  24.725  $\Omega$  -34.01  $\Omega$

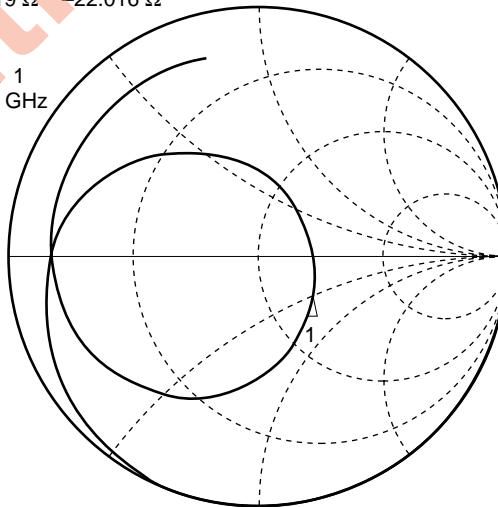
MARKER 1  
 1.9 GHz



START 0.10000000 GHz  
 STOP 3.10000000 GHz

S<sub>22</sub>  
 REF 1.0 Units  
 1 200.0 mUnits/  
 $\nabla$  74.719  $\Omega$  -22.016  $\Omega$

MARKER 1  
 1.9 GHz

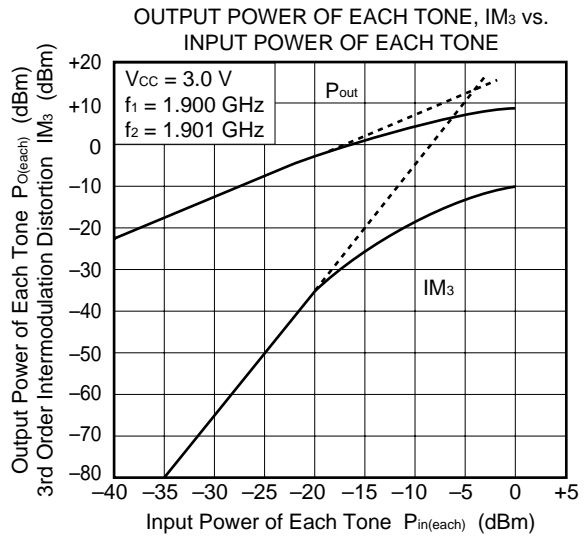
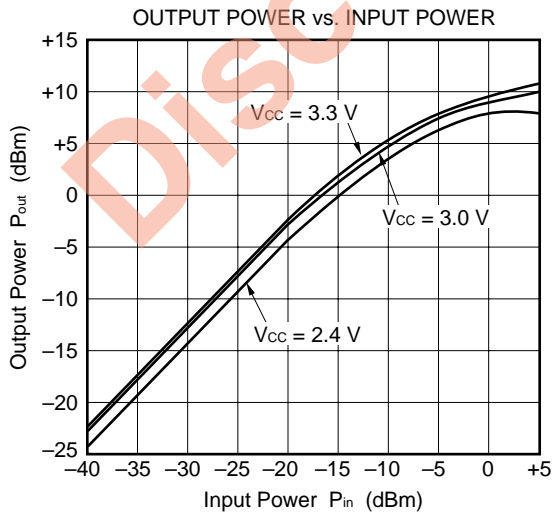
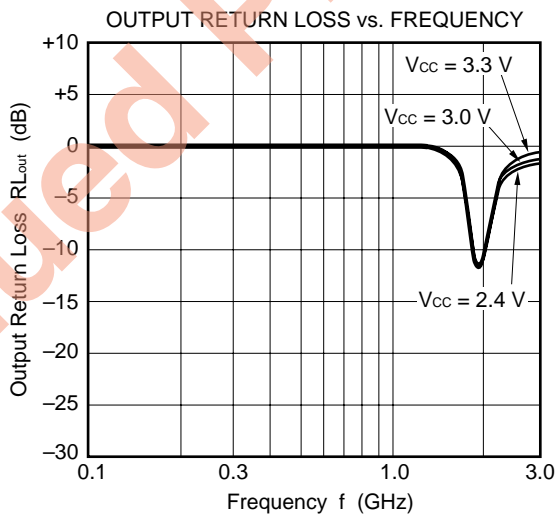
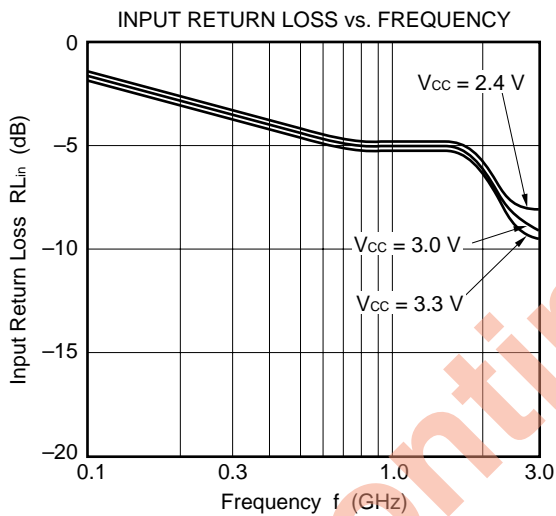
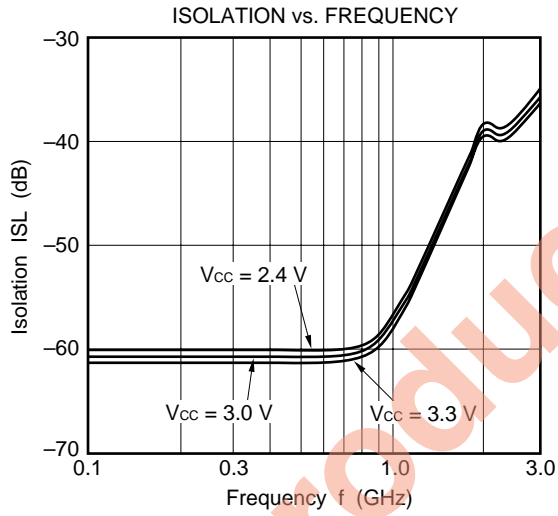
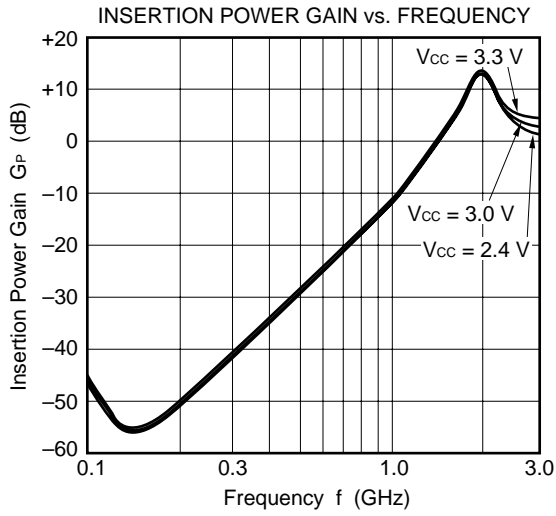


START 0.10000000 GHz  
 STOP 3.10000000 GHz

Discontinued Product

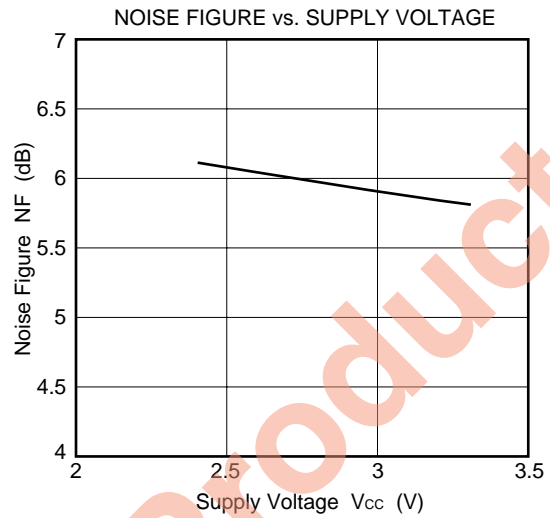
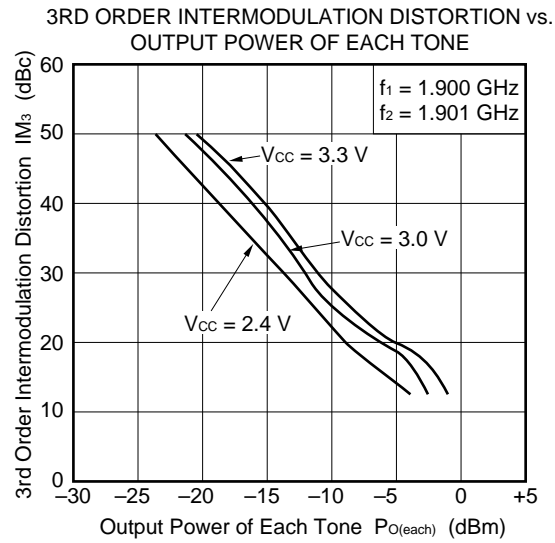
-  $\mu$ PC8128TA -

1.90 GHz OUTPUT PORT MATCHING



-  $\mu$ PC8128TA -

1.90 GHz OUTPUT PORT MATCHING

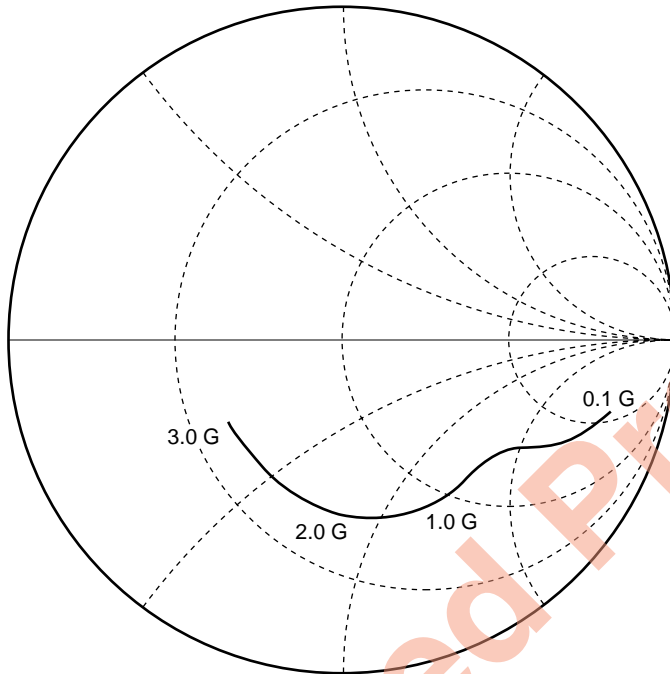


Discontinued Product

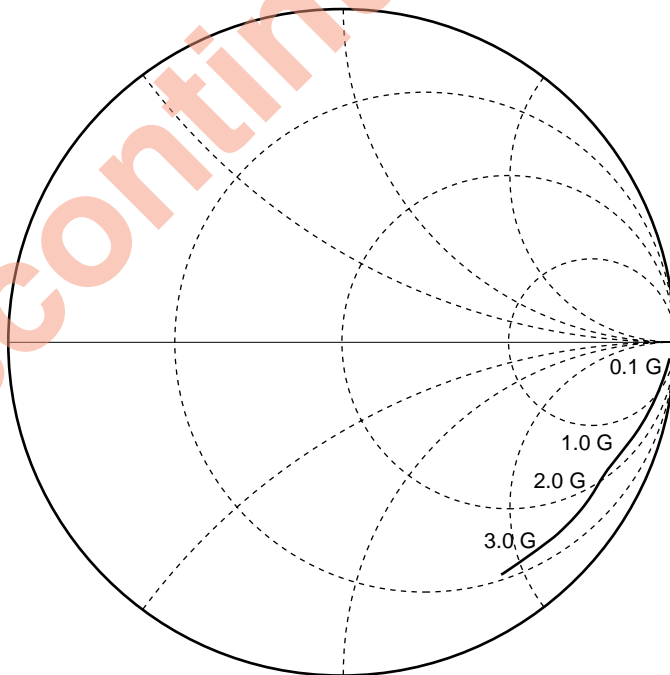
S-PARAMETERS ( $V_{CC} = V_{out} = 3.0\text{ V}$ )

–  $\mu$ PC8128TA –

S<sub>11</sub>-FREQUENCY



S<sub>22</sub>-FREQUENCY



Discontinued Product

TYPICAL S-PARAMETER VALUES (T<sub>A</sub> = +25°C)

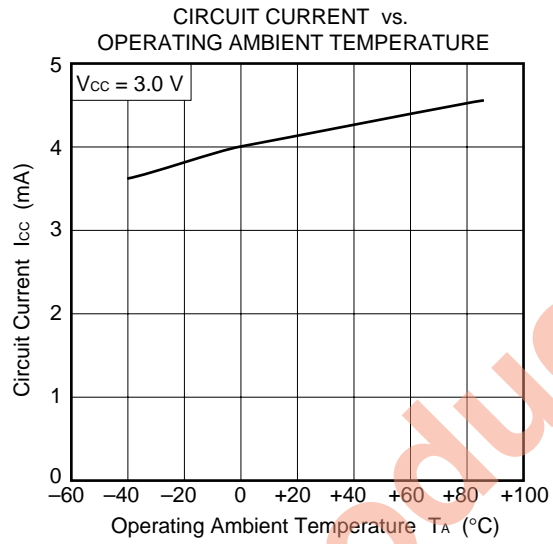
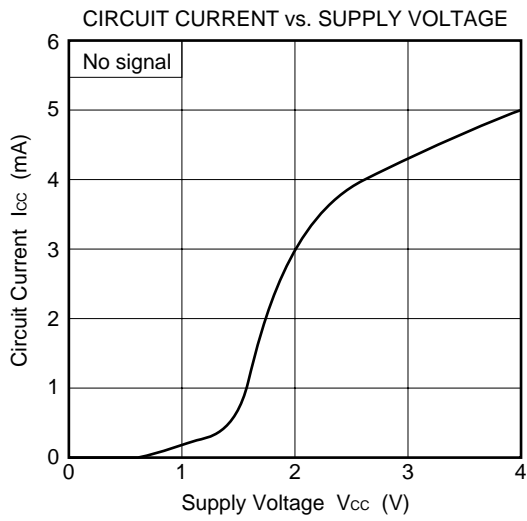
$\mu$ PC8128TA

V<sub>CC</sub> = V<sub>out</sub> = 3.0 V, I<sub>CC</sub> = 2.8 mA

FREQUENCY MHz	S <sub>11</sub>		S <sub>21</sub>		S <sub>12</sub>		S <sub>22</sub>	
	MAG.	ANG.	MAG.	ANG.	MAG.	ANG.	MAG.	ANG.
100.0000	0.844	-15.1	1.057	-177.8	0.000	121.5	0.991	-2.3
200.0000	0.743	-24.5	1.100	-175.2	0.002	125.8	0.993	-4.9
300.0000	0.663	-29.4	1.170	-173.5	0.003	116.7	0.978	-7.4
400.0000	0.614	-32.8	1.283	-173.4	0.005	91.7	0.975	-9.7
500.0000	0.584	-35.7	1.416	-174.9	0.005	76.0	0.965	-11.8
600.0000	0.571	-38.6	1.551	-178.1	0.005	60.6	0.958	-13.8
700.0000	0.563	-41.8	1.712	177.2	0.005	61.5	0.946	-15.8
800.0000	0.561	-45.8	1.838	171.9	0.006	59.2	0.937	-17.7
900.0000	0.561	-49.6	1.975	165.8	0.006	56.7	0.927	-19.5
1000.0000	0.560	-54.3	2.095	158.8	0.006	62.0	0.917	-20.9
1100.0000	0.562	-59.3	2.194	151.8	0.006	64.4	0.913	-22.6
1200.0000	0.556	-64.3	2.248	145.0	0.005	64.2	0.904	-23.9
1300.0000	0.552	-69.6	2.319	137.1	0.005	58.9	0.898	-25.2
1400.0000	0.549	-74.9	2.366	130.1	0.004	67.4	0.893	-26.5
1500.0000	0.541	-80.3	2.338	122.3	0.005	83.7	0.888	-27.4
1600.0000	0.532	-85.6	2.381	115.8	0.003	99.8	0.887	-28.4
1700.0000	0.523	-90.6	2.297	108.6	0.005	111.2	0.884	-29.4
1800.0000	0.511	-95.6	2.267	101.9	0.005	114.8	0.885	-30.3
1900.0000	0.501	-100.5	2.191	96.5	0.006	128.6	0.886	-31.8
2000.0000	0.491	-105.0	2.142	90.8	0.007	135.8	0.883	-32.9
2100.0000	0.480	-109.6	2.100	85.9	0.009	140.4	0.884	-34.3
2200.0000	0.473	-113.9	2.032	80.8	0.011	136.3	0.884	-35.8
2300.0000	0.463	-118.1	2.030	76.6	0.013	141.9	0.882	-37.5
2400.0000	0.454	-122.2	1.996	72.2	0.015	138.9	0.880	-39.5
2500.0000	0.446	-126.1	1.948	67.6	0.017	139.2	0.878	-41.4
2600.0000	0.439	-129.7	1.921	63.2	0.018	142.2	0.877	-43.5
2700.0000	0.433	-133.5	1.916	59.8	0.022	136.6	0.871	-45.7
2800.0000	0.428	-136.8	1.858	54.8	0.023	134.1	0.863	-48.2
2900.0000	0.424	-140.0	1.931	50.3	0.025	135.3	0.868	-50.3
3000.0000	0.422	-143.5	1.895	46.6	0.028	134.2	0.845	-53.2
3100.0000	0.420	-146.8	1.928	39.4	0.030	131.5	0.834	-55.9

Discontinued Product

–  $\mu$ PC8151TA –



Discontinued Product

–  $\mu$ PC8151TA –

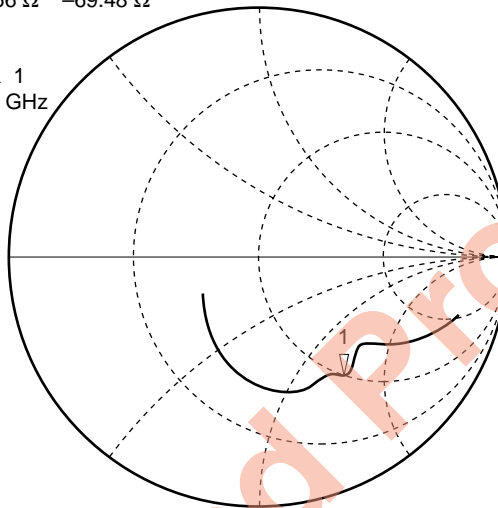
1.00 GHz OUTPUT PORT MATCHING

S-PARAMETERS (monitored at connector on board)

$T_A = +25^\circ\text{C}$ ,  $V_{CC} = V_{out} = 3.0\text{ V}$

S<sub>11</sub>  
 REF 1.0 Units  
 1 200.0 mUnits/  
 ▽ 52.156  $\Omega$  -69.48  $\Omega$

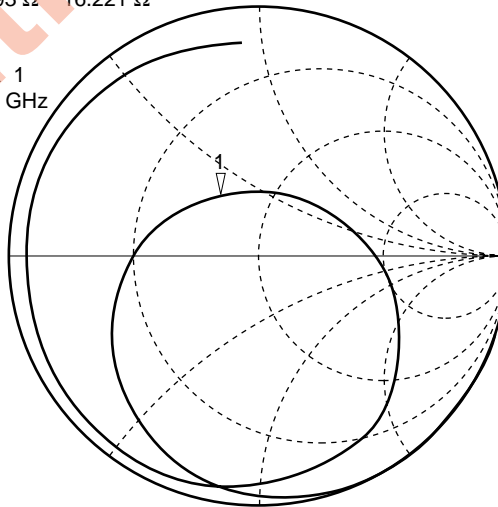
MARKER 1  
 1.0 GHz



START 0.10000000 GHz  
 STOP 3.10000000 GHz

S<sub>22</sub>  
 REF 1.0 Units  
 1 200.0 mUnits/  
 ▽ 32.893  $\Omega$  16.221  $\Omega$

MARKER 1  
 1.0 GHz

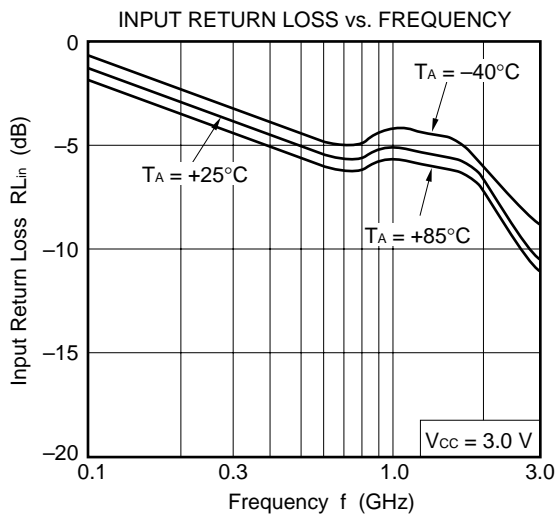
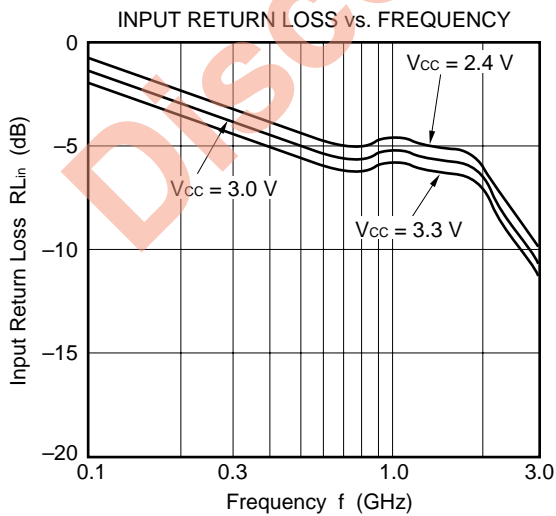
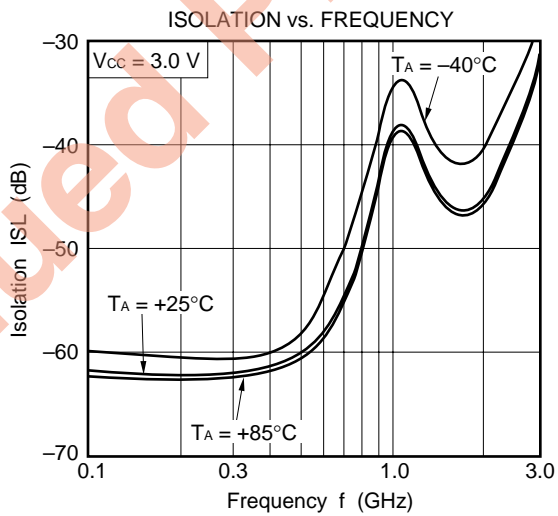
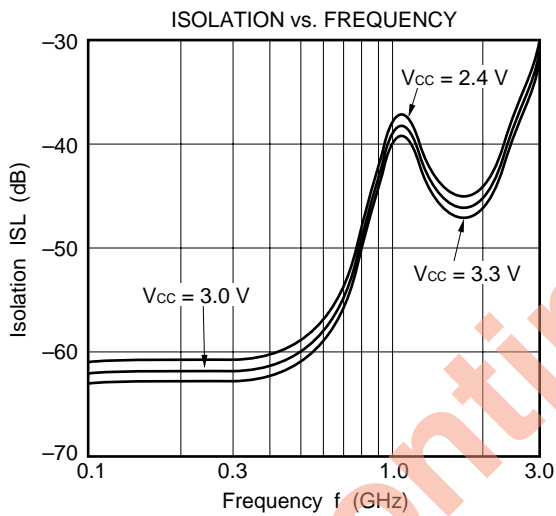
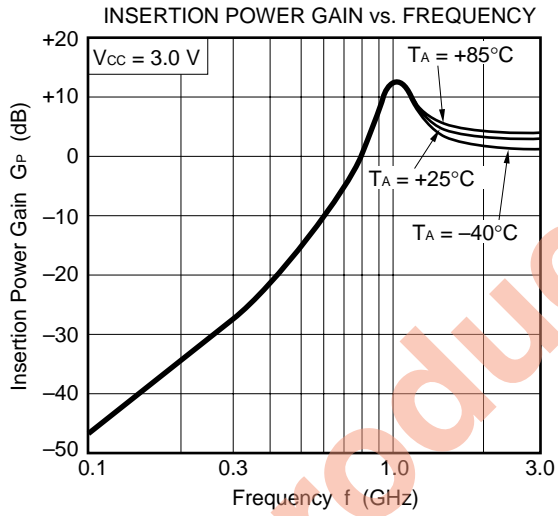
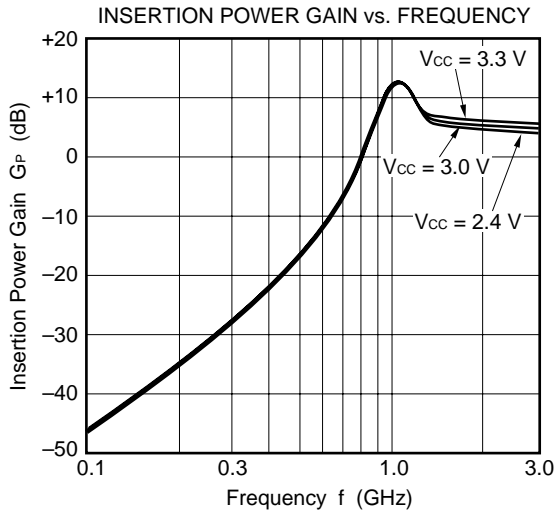


START 0.10000000 GHz  
 STOP 3.10000000 GHz

Discontinued Product

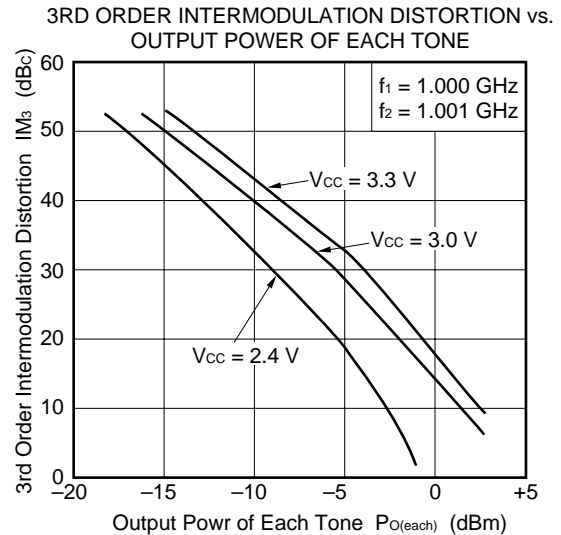
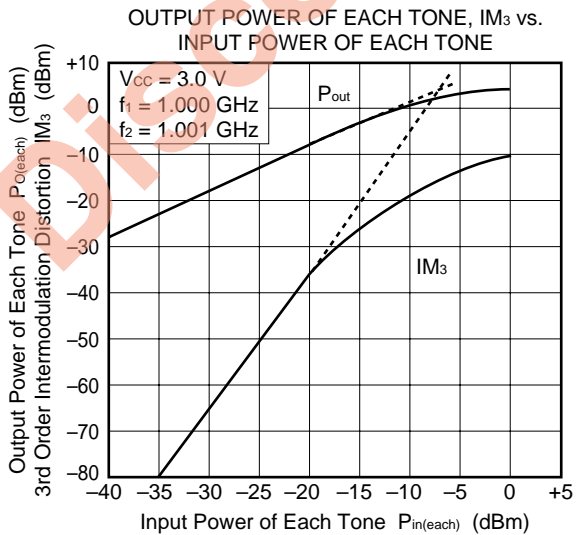
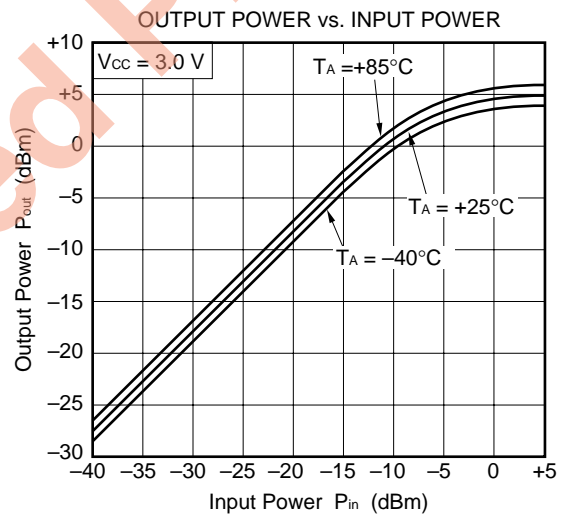
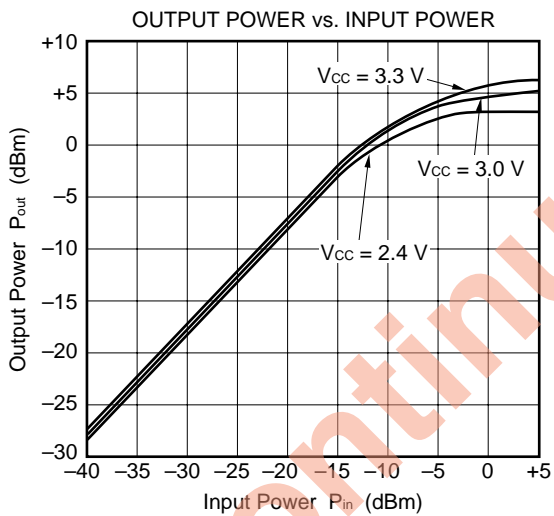
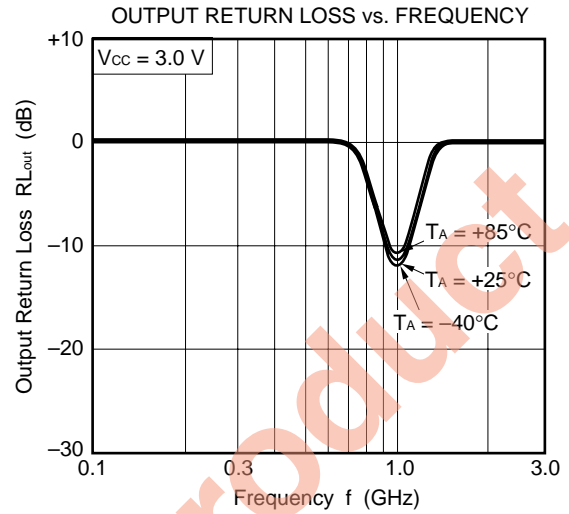
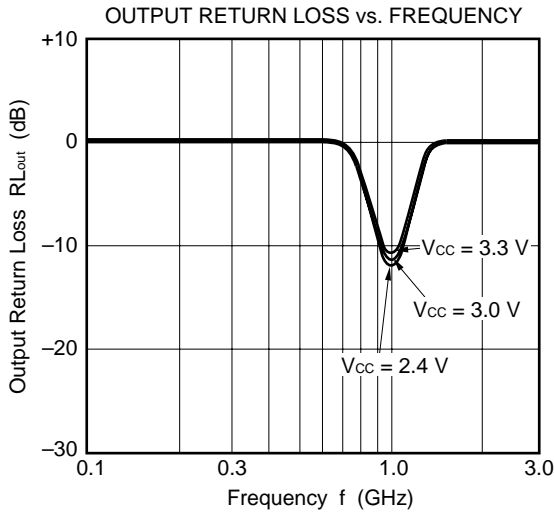
-  $\mu$ PC8151TA -

1.00 GHz OUTPUT PORT MATCHING



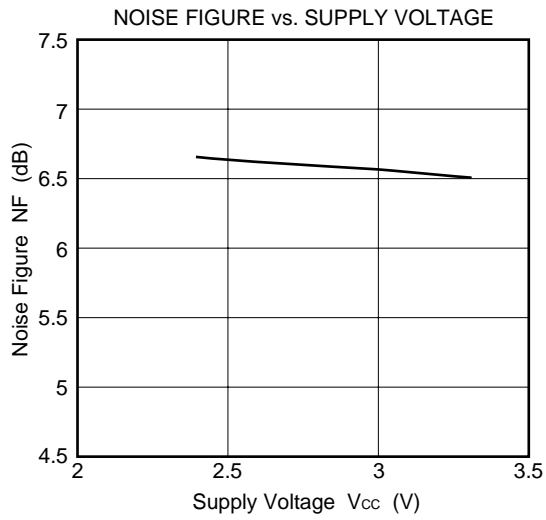
-  $\mu$ PC8151TA -

1.00 GHz OUTPUT PORT MATCHING



–  $\mu$ PC8151TA –

1.00 GHz OUTPUT PORT MATCHING



Discontinued Product

–  $\mu$ PC8151TA –

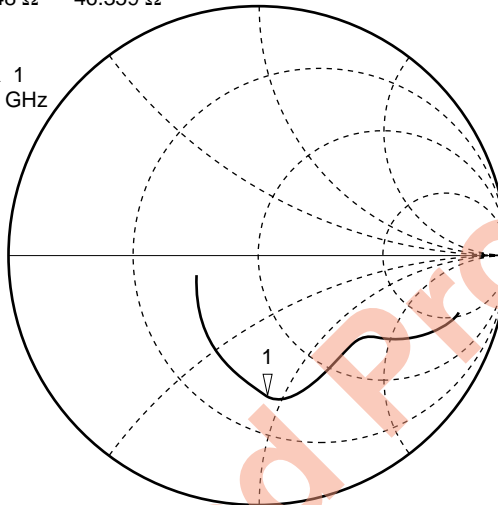
1.66 GHz OUTPUT PORT MATCHING

S-PARAMETERS (monitored at connector on board)

$T_A = +25^\circ\text{C}$ ,  $V_{CC} = V_{out} = 3.0\text{ V}$

S<sub>11</sub>  
 REF 1.0 Units  
 1 200.0 mUnits/  
 $\nabla$  26.748  $\Omega$  -46.359  $\Omega$

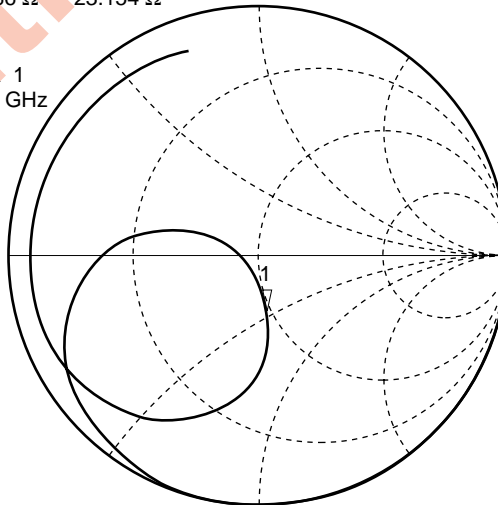
MARKER 1  
 1.66 GHz



START 0.10000000 GHz  
 STOP 3.10000000 GHz

S<sub>22</sub>  
 REF 1.0 Units  
 1 200.0 mUnits/  
 $\nabla$  49.086  $\Omega$  -23.154  $\Omega$

MARKER 1  
 1.66 GHz

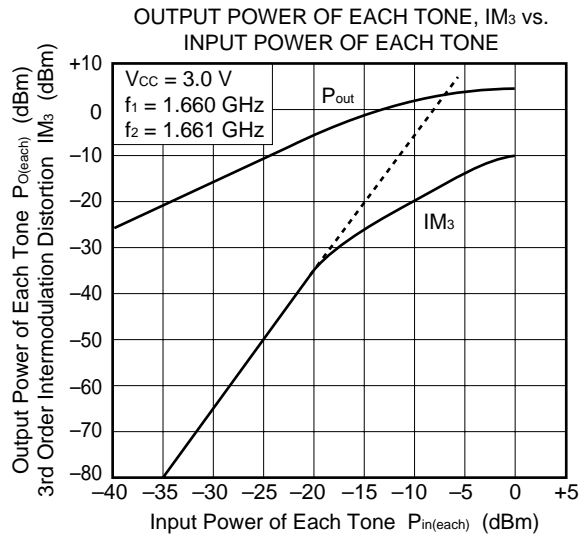
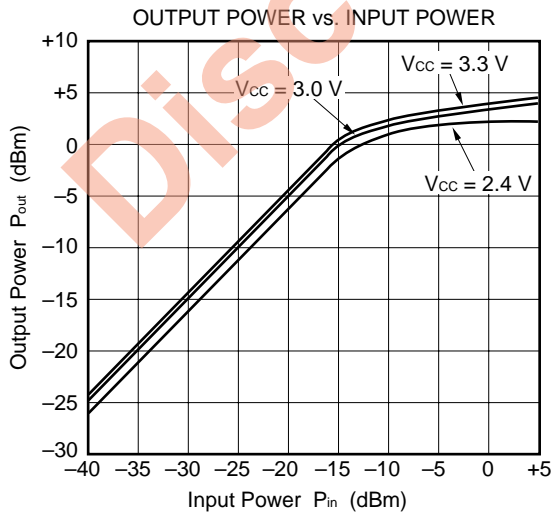
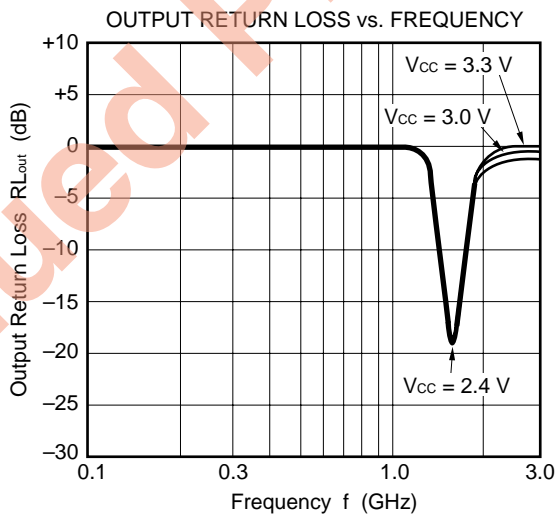
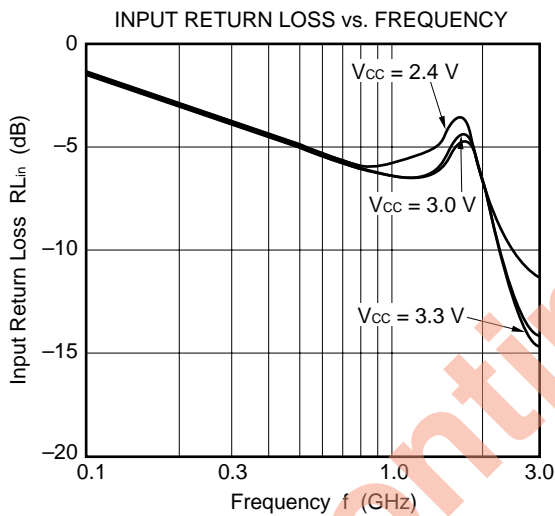
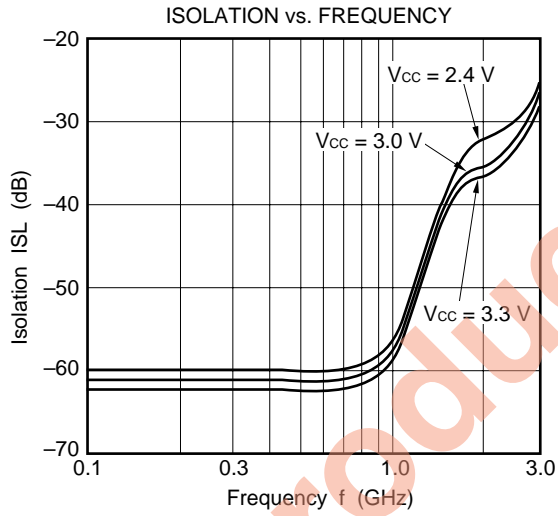
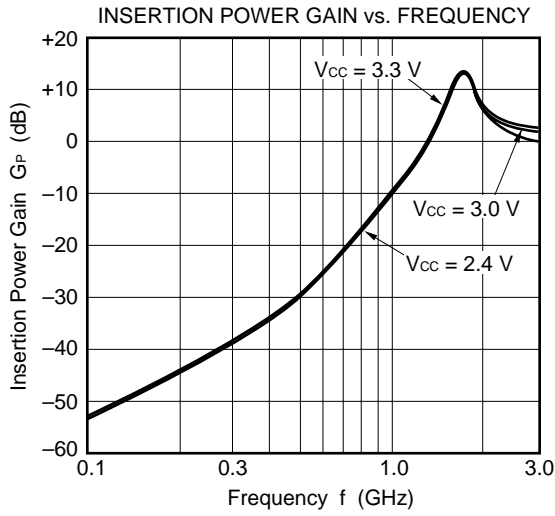


START 0.10000000 GHz  
 STOP 3.10000000 GHz

Discontinued Product

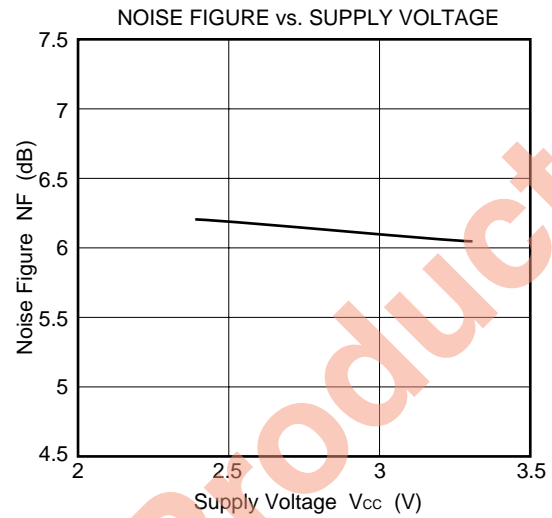
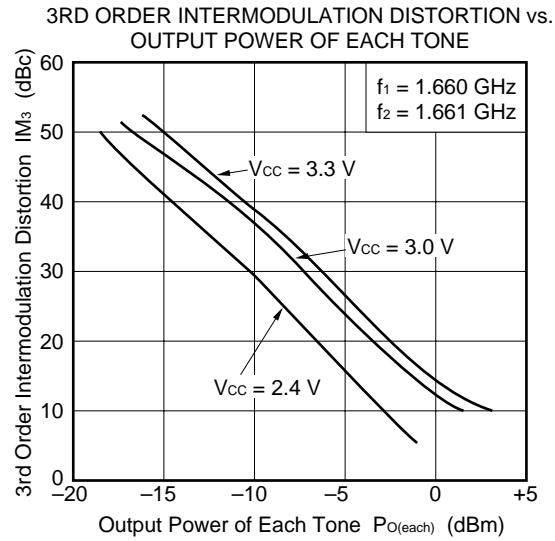
-  $\mu$ PC8151TA -

1.66 GHz OUTPUT PORT MATCHING



–  $\mu$ PC8151TA –

1.66 GHz OUTPUT PORT MATCHING



Discontinued Product

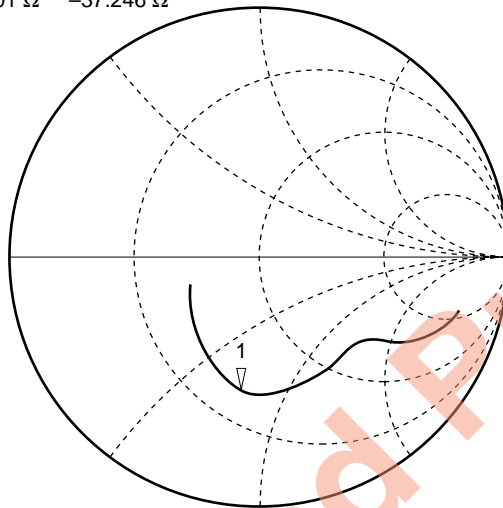
–  $\mu$ PC8151TA –

1.90 GHz OUTPUT PORT MATCHING

S-PARAMETERS (monitored at connector on board)

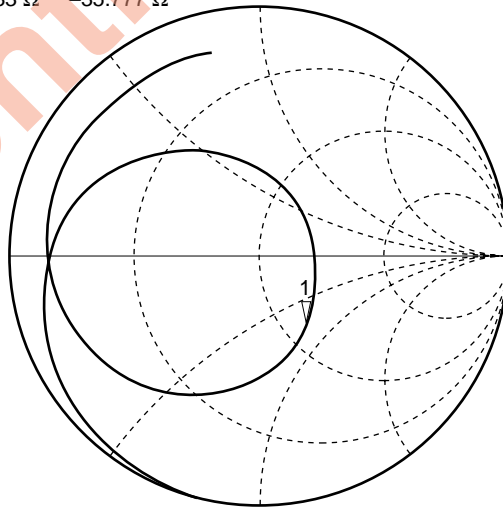
$T_A = +25^\circ\text{C}$ ,  $V_{CC} = V_{out} = 3.0\text{ V}$

S<sub>11</sub>  
 REF 1.0 Units  
 1 200.0 mUnits/  
 ▽ 24.301  $\Omega$  -37.246  $\Omega$



START 0.10000000 GHz  
 STOP 3.10000000 GHz

S<sub>22</sub>  
 REF 1.0 Units  
 1 200.0 mUnits/  
 ▽ 64.633  $\Omega$  -35.777  $\Omega$

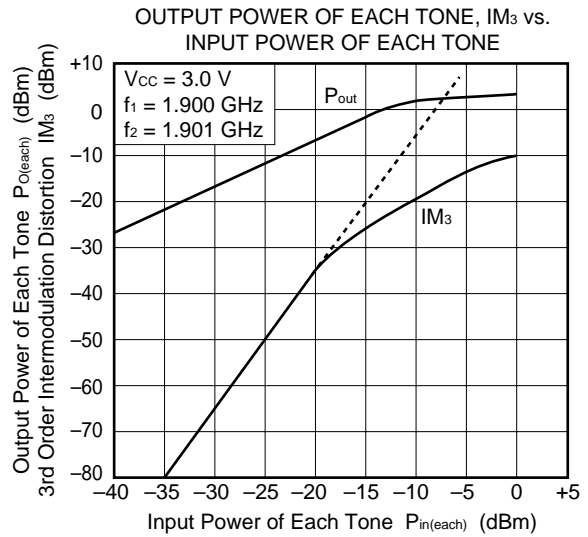
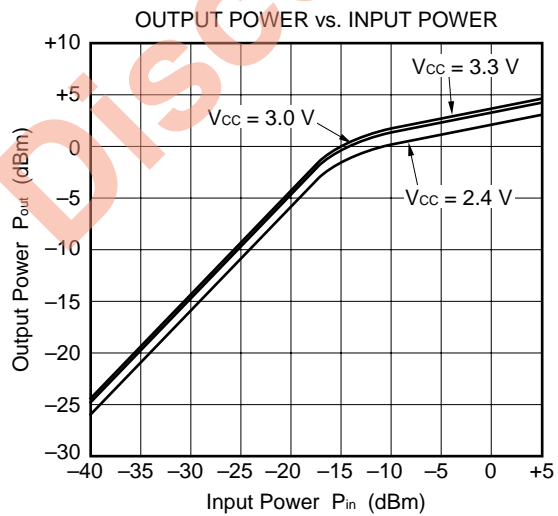
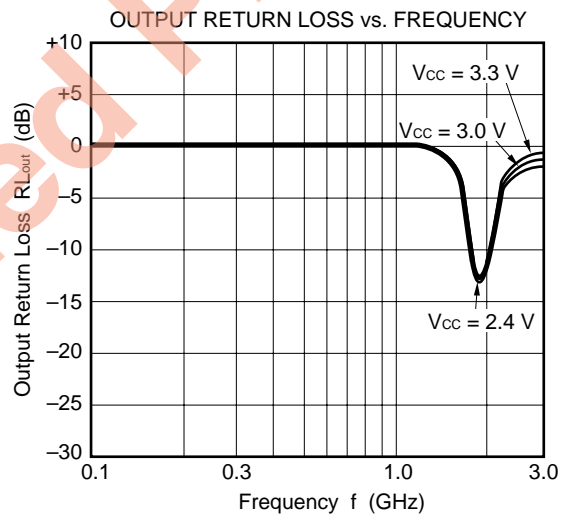
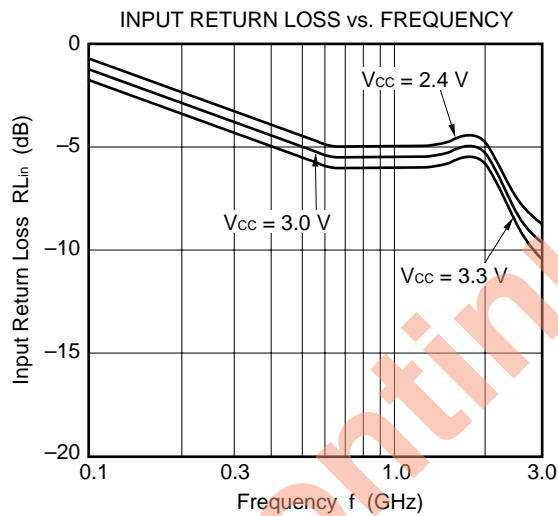
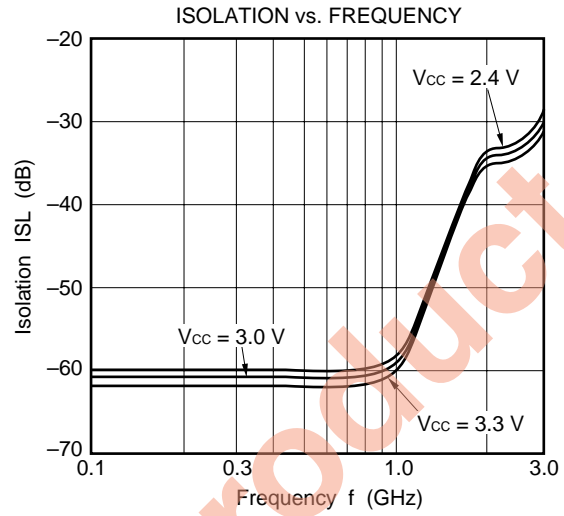
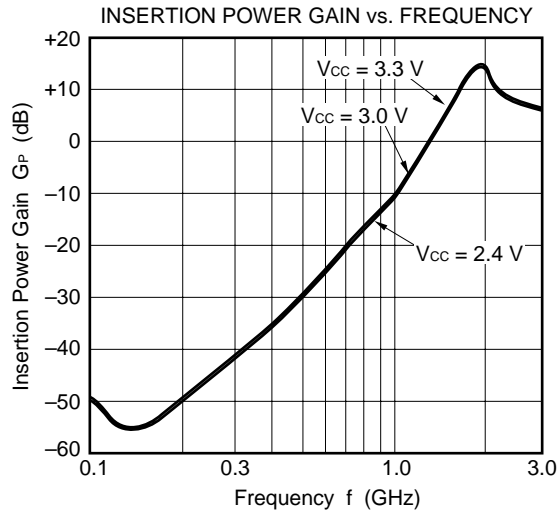


START 0.10000000 GHz  
 STOP 3.10000000 GHz

Discontinued Product

-  $\mu$ PC8151TA -

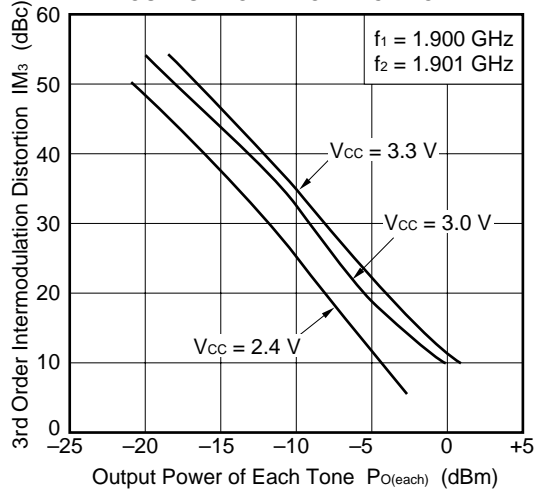
1.90 GHz OUTPUT PORT MATCHING



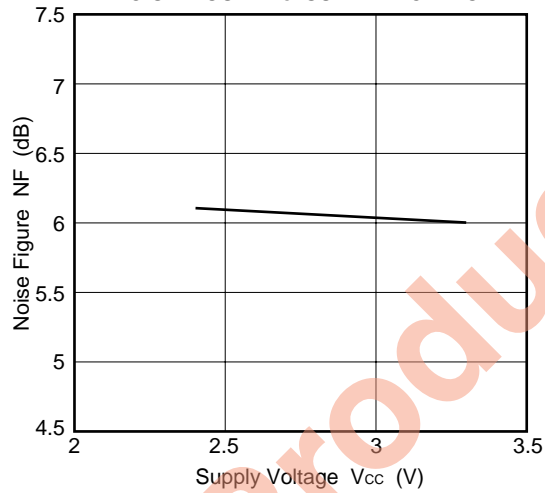
–  $\mu$ PC8151TA –

1.90 GHz OUTPUT PORT MATCHING

3RD ORDER INTERMODULATION DISTORTION vs. OUTPUT POWER OF EACH TONE



NOISE FIGURE vs. SUPPLY VOLTAGE

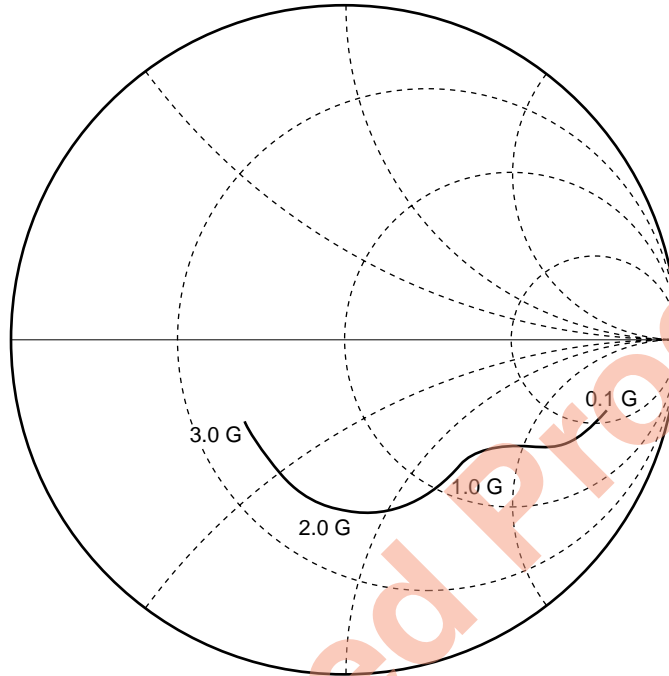


Discontinued Product

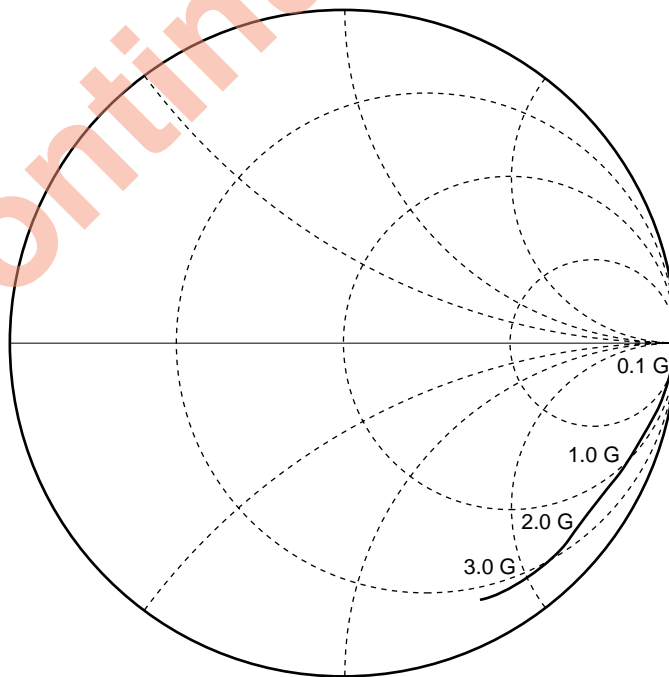
**S-PARAMETERS** ( $V_{CC} = V_{out} = 3.0\text{ V}$ )

–  $\mu$ PC8151TA –

S<sub>11</sub>-FREQUENCY



S<sub>22</sub>-FREQUENCY

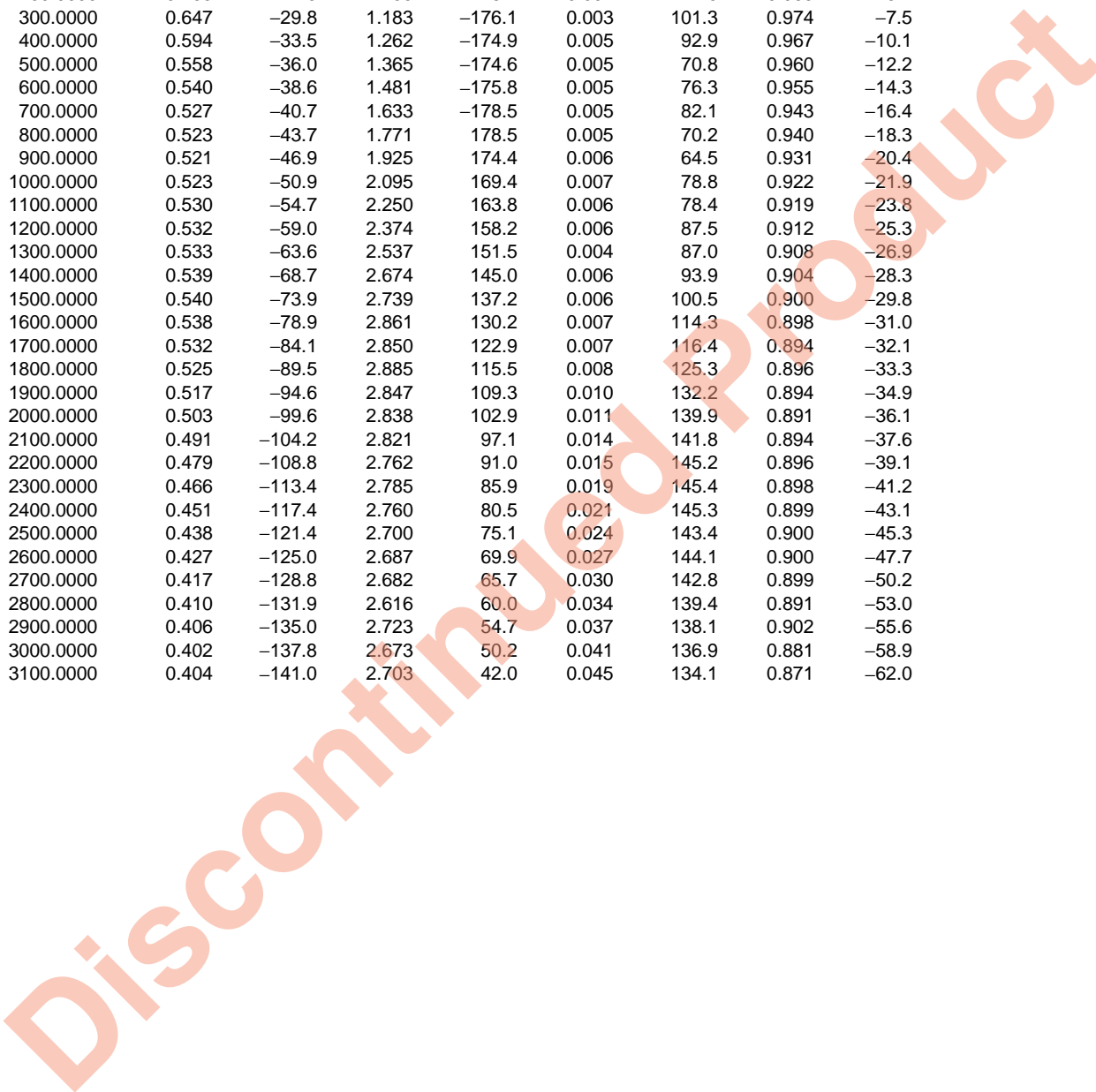


TYPICAL S-PARAMETER VALUES (T<sub>A</sub> = +25°C)

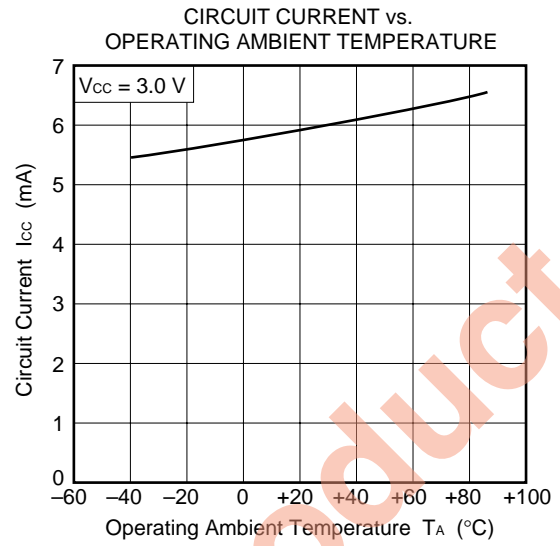
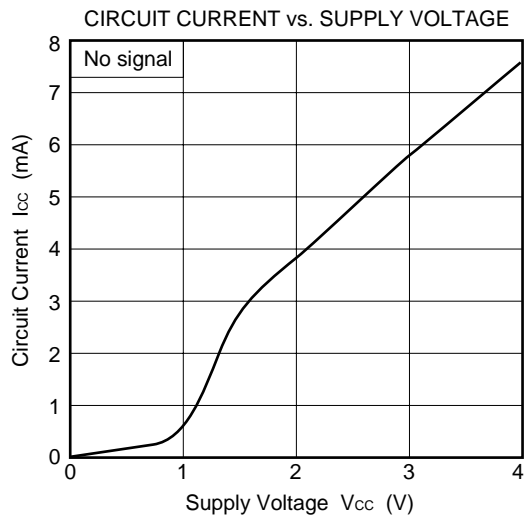
$\mu$ PC8151TA

V<sub>CC</sub> = V<sub>out</sub> = 3.0 V, I<sub>CC</sub> = 4.2 mA

FREQUENCY MHz	S <sub>11</sub>		S <sub>21</sub>		S <sub>12</sub>		S <sub>22</sub>	
	MAG.	ANG.	MAG.	ANG.	MAG.	ANG.	MAG.	ANG.
100.0000	0.835	-15.3	1.153	-179.7	0.001	136.7	0.989	-2.5
200.0000	0.735	-24.9	1.155	-178.2	0.002	127.6	0.989	-5.2
300.0000	0.647	-29.8	1.183	-176.1	0.003	101.3	0.974	-7.5
400.0000	0.594	-33.5	1.262	-174.9	0.005	92.9	0.967	-10.1
500.0000	0.558	-36.0	1.365	-174.6	0.005	70.8	0.960	-12.2
600.0000	0.540	-38.6	1.481	-175.8	0.005	76.3	0.955	-14.3
700.0000	0.527	-40.7	1.633	-178.5	0.005	82.1	0.943	-16.4
800.0000	0.523	-43.7	1.771	178.5	0.005	70.2	0.940	-18.3
900.0000	0.521	-46.9	1.925	174.4	0.006	64.5	0.931	-20.4
1000.0000	0.523	-50.9	2.095	169.4	0.007	78.8	0.922	-21.9
1100.0000	0.530	-54.7	2.250	163.8	0.006	78.4	0.919	-23.8
1200.0000	0.532	-59.0	2.374	158.2	0.006	87.5	0.912	-25.3
1300.0000	0.533	-63.6	2.537	151.5	0.004	87.0	0.908	-26.9
1400.0000	0.539	-68.7	2.674	145.0	0.006	93.9	0.904	-28.3
1500.0000	0.540	-73.9	2.739	137.2	0.006	100.5	0.900	-29.8
1600.0000	0.538	-78.9	2.861	130.2	0.007	114.3	0.898	-31.0
1700.0000	0.532	-84.1	2.850	122.9	0.007	116.4	0.894	-32.1
1800.0000	0.525	-89.5	2.885	115.5	0.008	125.3	0.896	-33.3
1900.0000	0.517	-94.6	2.847	109.3	0.010	132.2	0.894	-34.9
2000.0000	0.503	-99.6	2.838	102.9	0.011	139.9	0.891	-36.1
2100.0000	0.491	-104.2	2.821	97.1	0.014	141.8	0.894	-37.6
2200.0000	0.479	-108.8	2.762	91.0	0.015	145.2	0.896	-39.1
2300.0000	0.466	-113.4	2.785	85.9	0.019	145.4	0.898	-41.2
2400.0000	0.451	-117.4	2.760	80.5	0.021	145.3	0.899	-43.1
2500.0000	0.438	-121.4	2.700	75.1	0.024	143.4	0.900	-45.3
2600.0000	0.427	-125.0	2.687	69.9	0.027	144.1	0.900	-47.7
2700.0000	0.417	-128.8	2.682	65.7	0.030	142.8	0.899	-50.2
2800.0000	0.410	-131.9	2.616	60.0	0.034	139.4	0.891	-53.0
2900.0000	0.406	-135.0	2.723	54.7	0.037	138.1	0.902	-55.6
3000.0000	0.402	-137.8	2.673	50.2	0.041	136.9	0.881	-58.9
3100.0000	0.404	-141.0	2.703	42.0	0.045	134.1	0.871	-62.0



–  $\mu$ PC8152TA –



Discontinued Product

–  $\mu$ PC8152TA –

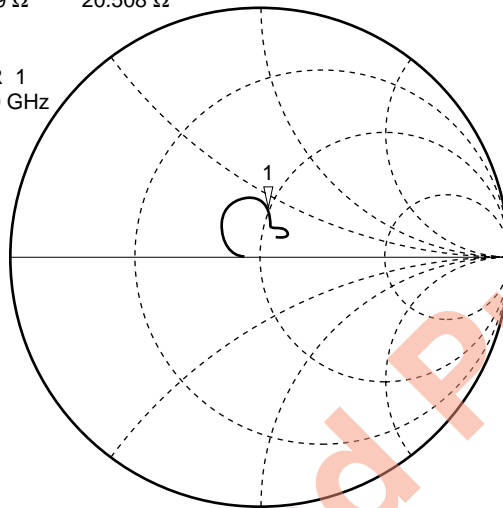
1.00 GHz OUTPUT PORT MATCHING

S-PARAMETERS (monitored at connector on board)

$T_A = +25^\circ\text{C}$ ,  $V_{CC} = V_{out} = 3.0\text{ V}$

S<sub>11</sub>  
 REF 1.0 Units  
 1 200.0 mUnits/  
 ▽ 51.59  $\Omega$  20.508  $\Omega$

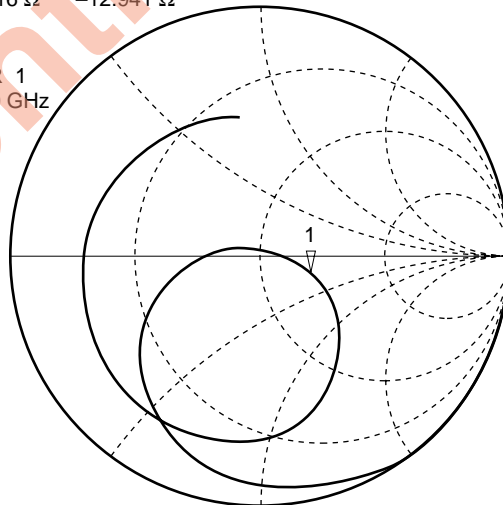
MARKER 1  
 1.0 GHz



START 0.10000000 GHz  
 STOP 3.10000000 GHz

S<sub>22</sub>  
 REF 1.0 Units  
 1 200.0 mUnits/  
 ▽ 75.816  $\Omega$  -12.941  $\Omega$

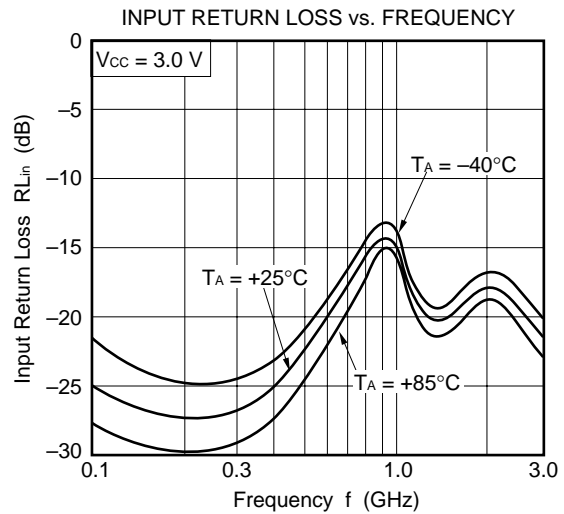
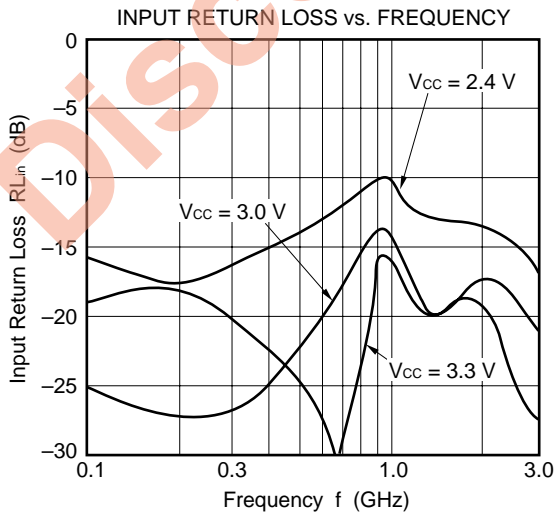
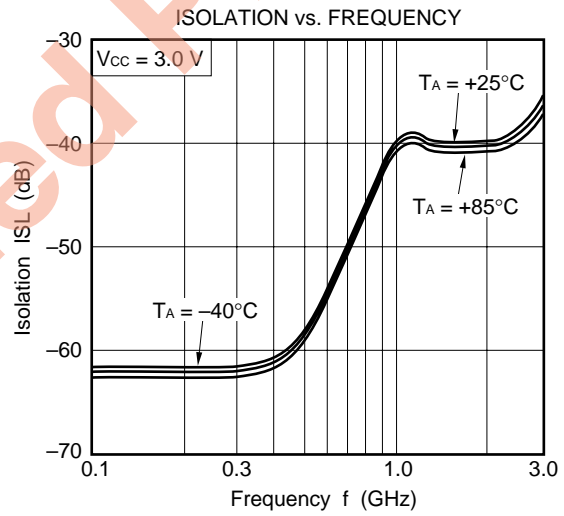
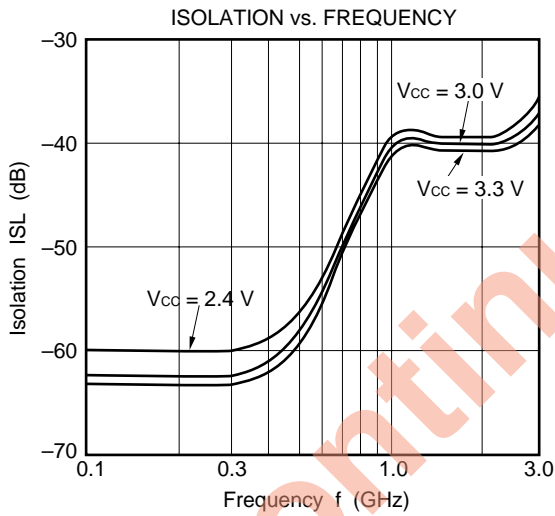
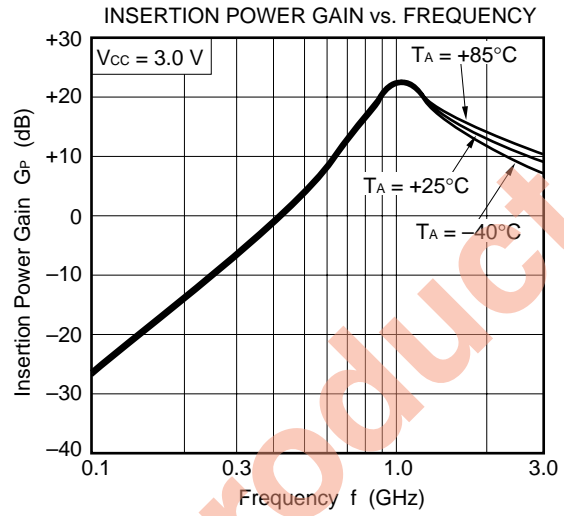
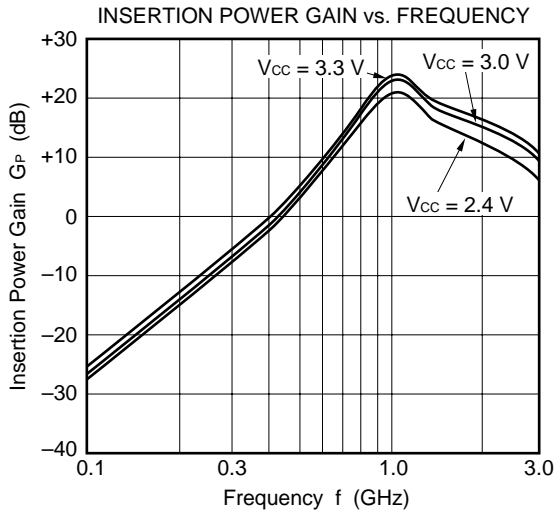
MARKER 1  
 1.0 GHz



START 0.10000000 GHz  
 STOP 3.10000000 GHz

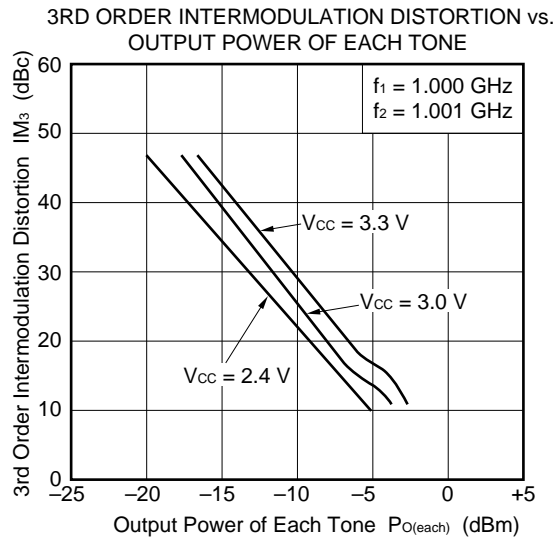
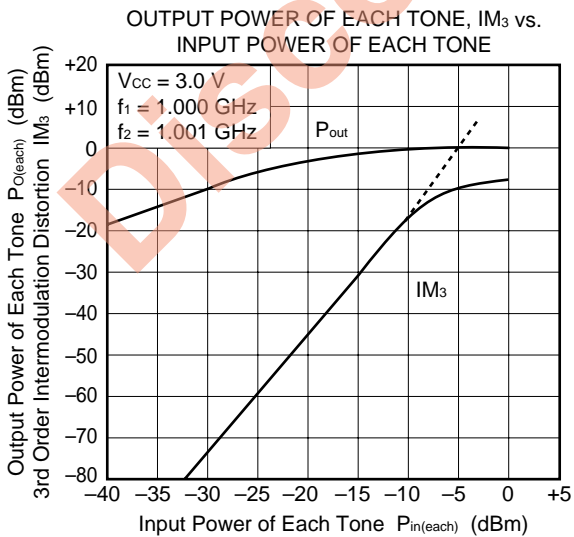
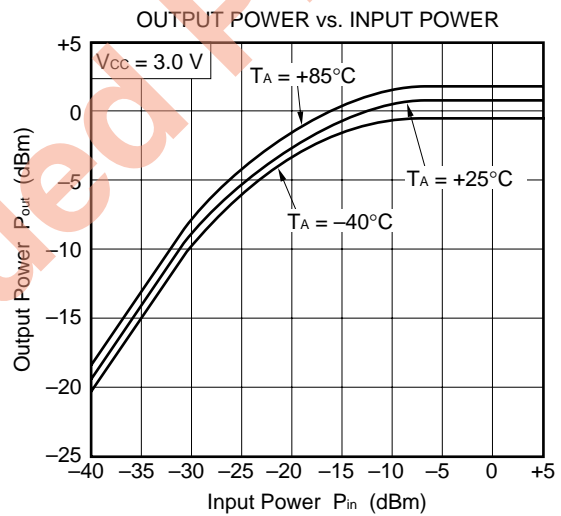
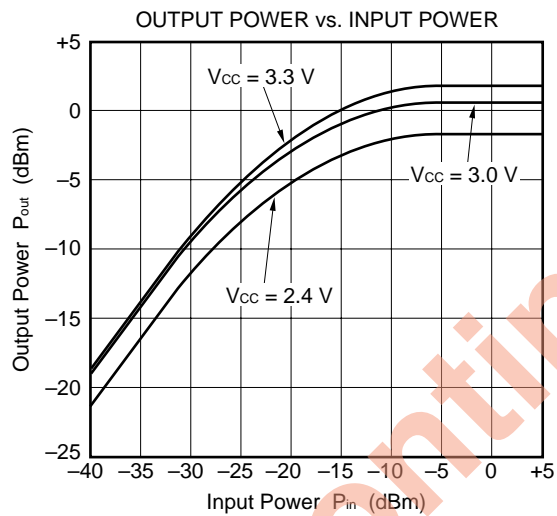
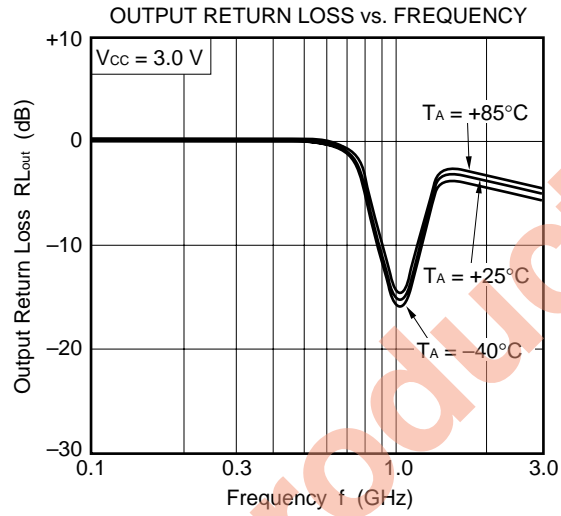
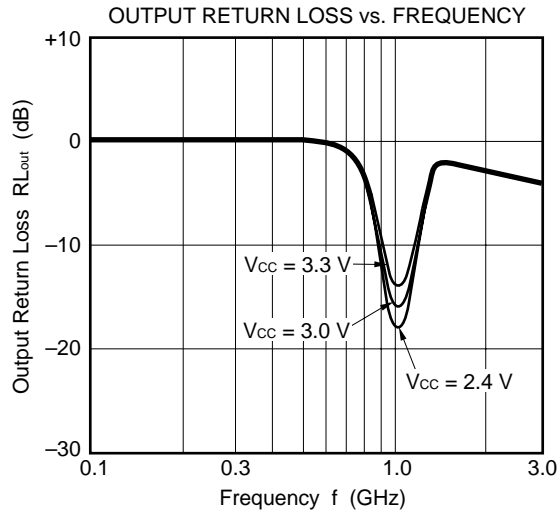
-  $\mu$ PC8152TA -

1.00 GHz OUTPUT PORT MATCHING



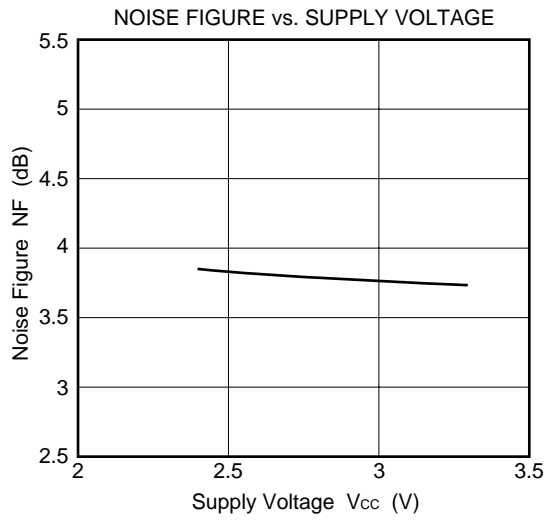
-  $\mu$ PC8152TA -

1.00 GHz OUTPUT PORT MATCHING



-  $\mu$ PC8152TA -

1.00 GHz OUTPUT PORT MATCHING



Discontinued Product

-  $\mu$ PC8152TA -

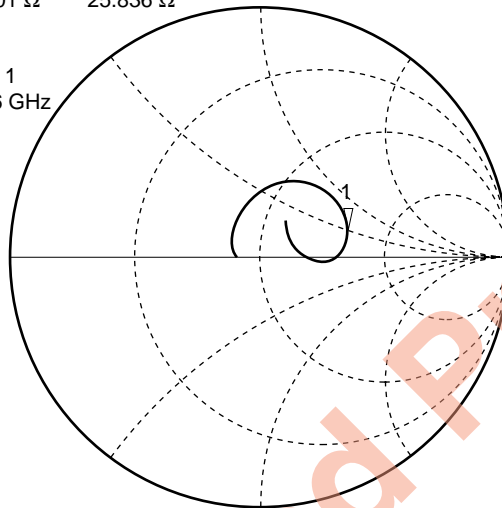
1.66 GHz OUTPUT PORT MATCHING

S-PARAMETERS (monitored at connector on board)

$T_A = +25^\circ\text{C}$ ,  $V_{CC} = V_{out} = 3.0\text{ V}$

S<sub>11</sub>  
 REF 1.0 Units  
 1 200.0 mUnits/  
 ▽ 98.301  $\Omega$  25.836  $\Omega$

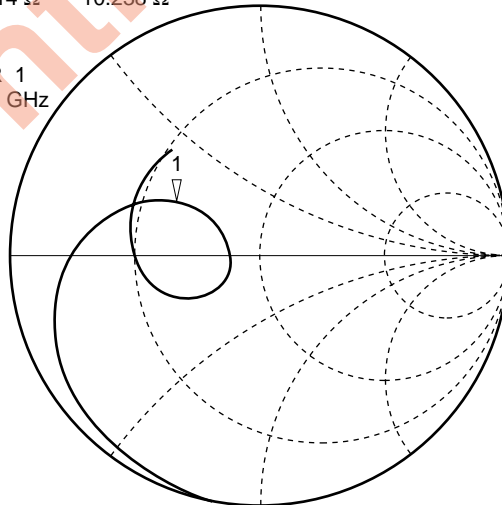
MARKER 1  
 1.66 GHz



START 0.10000000 GHz  
 STOP 3.10000000 GHz

S<sub>22</sub>  
 REF 1.0 Units  
 1 200.0 mUnits/  
 ▽ 22.714  $\Omega$  10.238  $\Omega$

MARKER 1  
 1.66 GHz

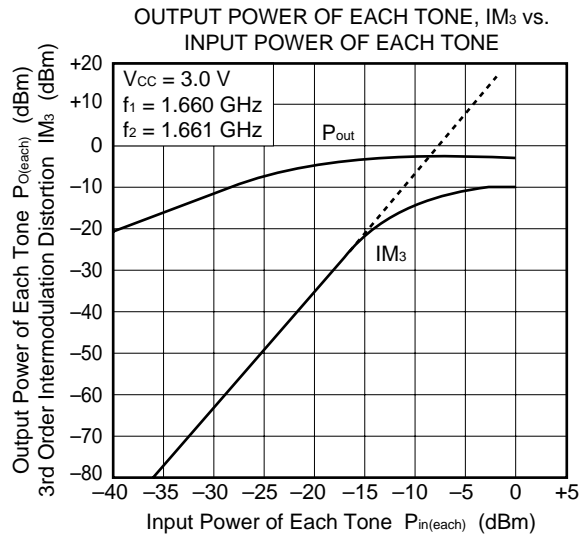
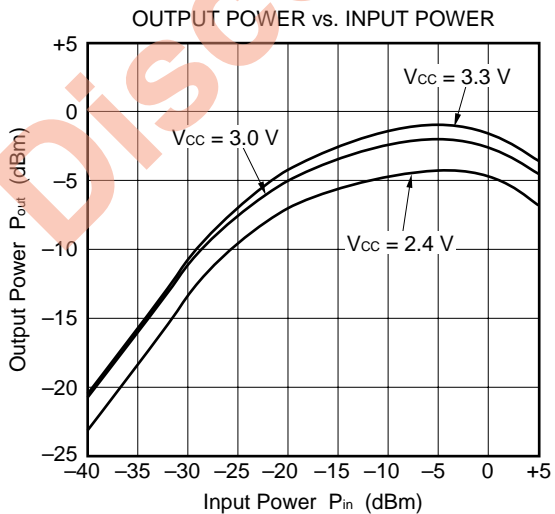
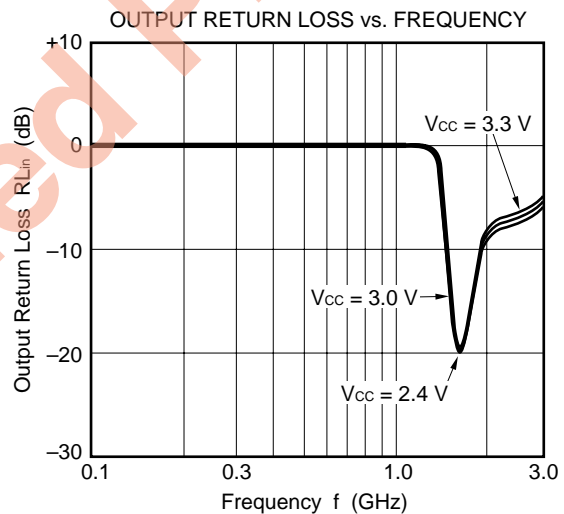
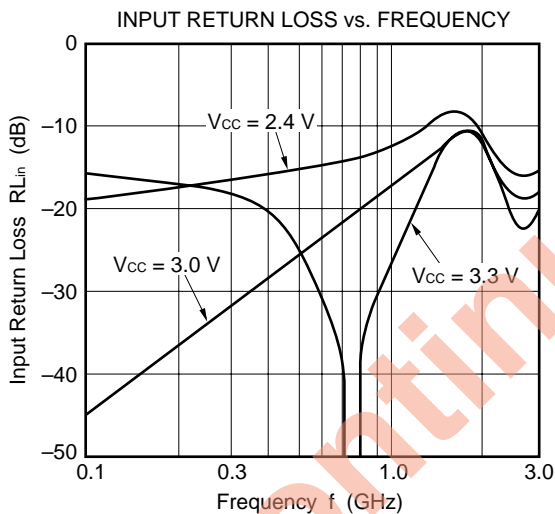
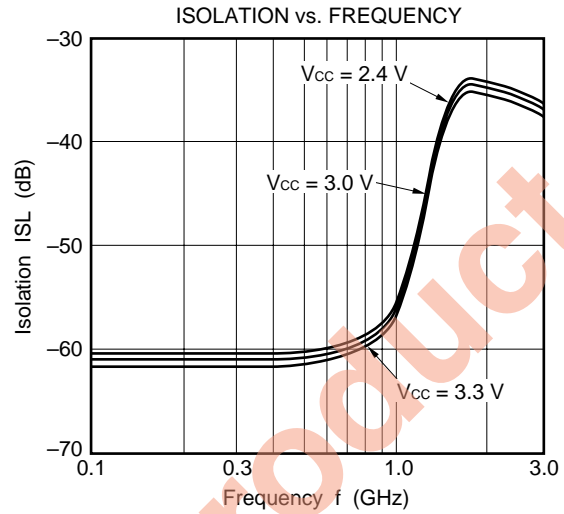
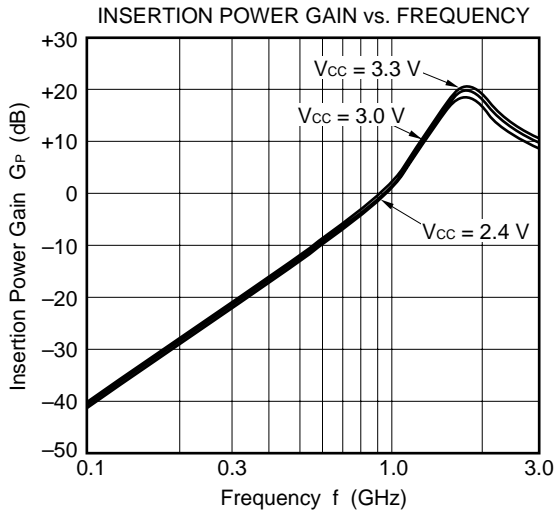


START 0.10000000 GHz  
 STOP 3.10000000 GHz

Discontinued Product

-  $\mu$ PC8152TA -

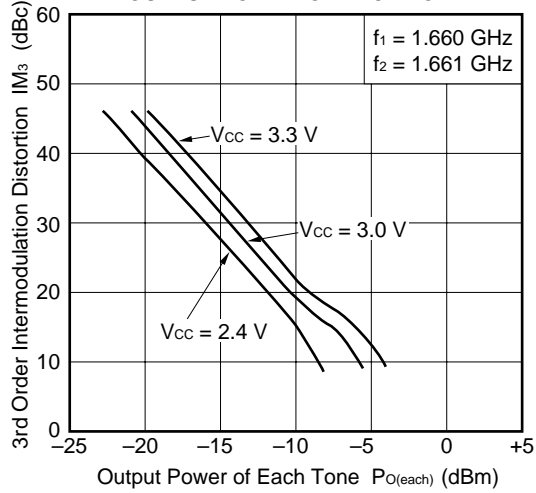
1.66 GHz OUTPUT PORT MATCHING



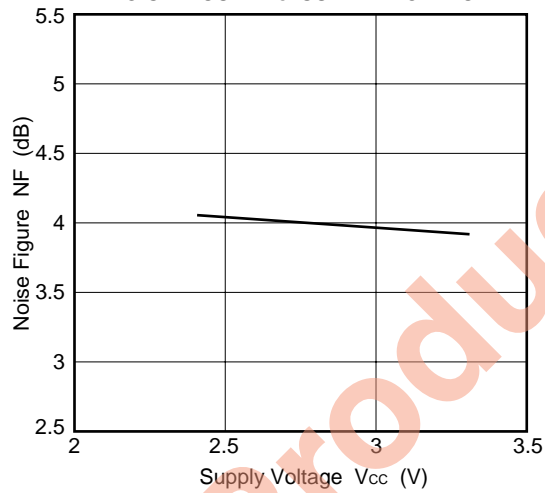
–  $\mu$ PC8152TA –

1.66 GHz OUTPUT PORT MATCHING

3RD ORDER INTERMODULATION DISTORTION vs. OUTPUT POWER OF EACH TONE



NOISE FIGURE vs. SUPPLY VOLTAGE



Discontinued Product

–  $\mu$ PC8152TA –

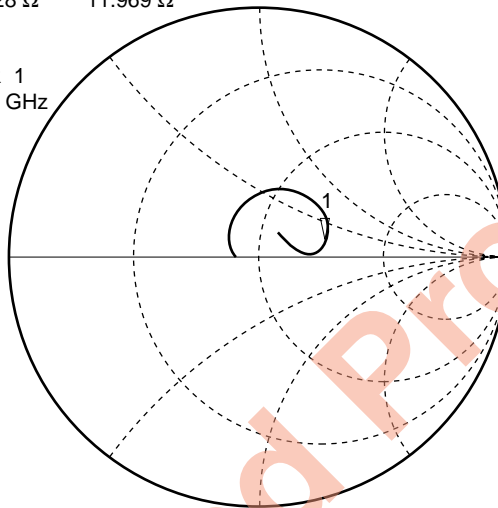
1.90 GHz OUTPUT PORT MATCHING

S-PARAMETERS (monitored at connector on board)

$T_A = +25^\circ\text{C}$ ,  $V_{CC} = V_{out} = 3.0\text{ V}$

S<sub>11</sub>  
 REF 1.0 Units  
 1 200.0 mUnits/  
 ▽ 85.828  $\Omega$  11.969  $\Omega$

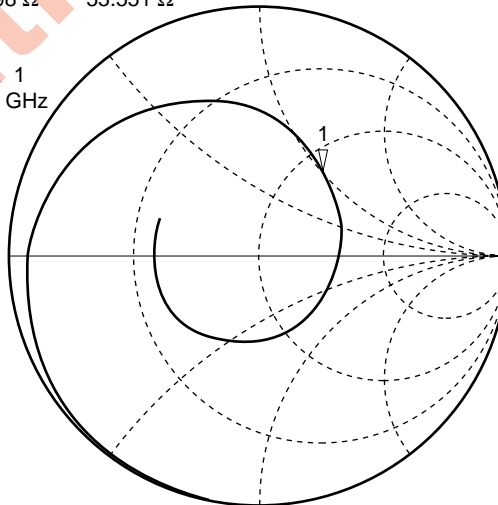
MARKER 1  
 1.9 GHz



START 0.10000000 GHz  
 STOP 3.10000000 GHz

S<sub>22</sub>  
 REF 1.0 Units  
 1 200.0 mUnits/  
 ▽ 62.398  $\Omega$  55.551  $\Omega$

MARKER 1  
 1.9 GHz

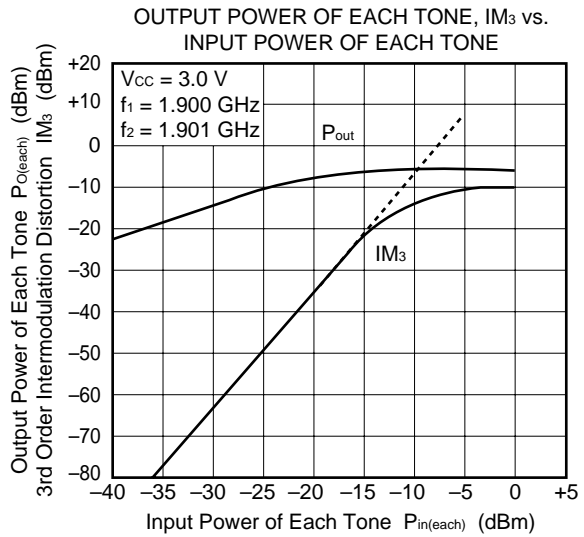
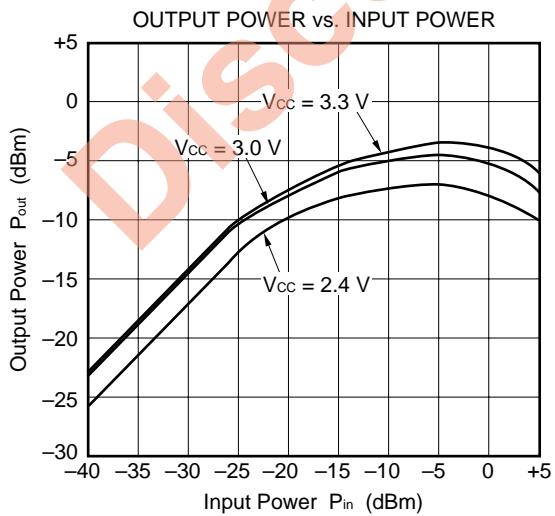
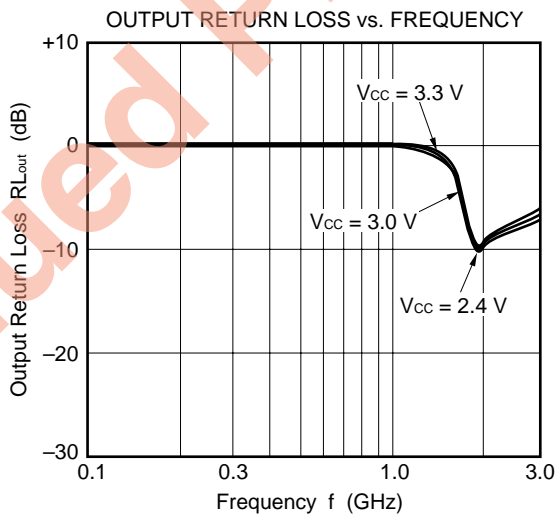
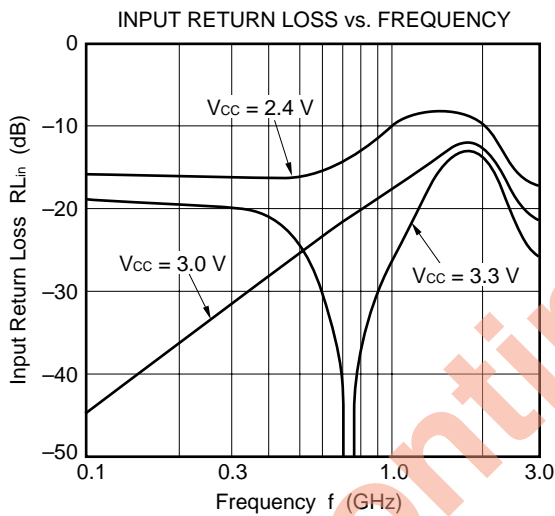
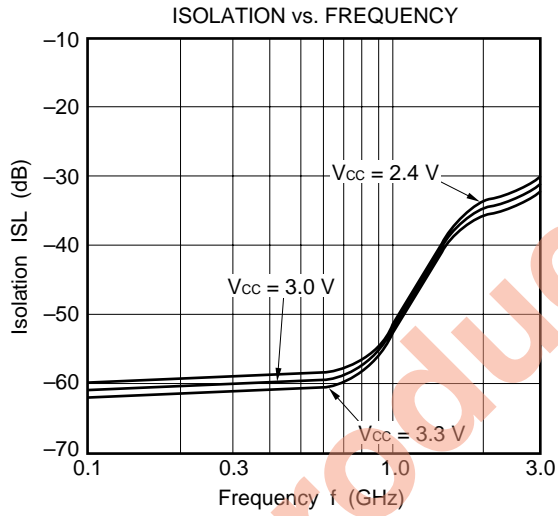
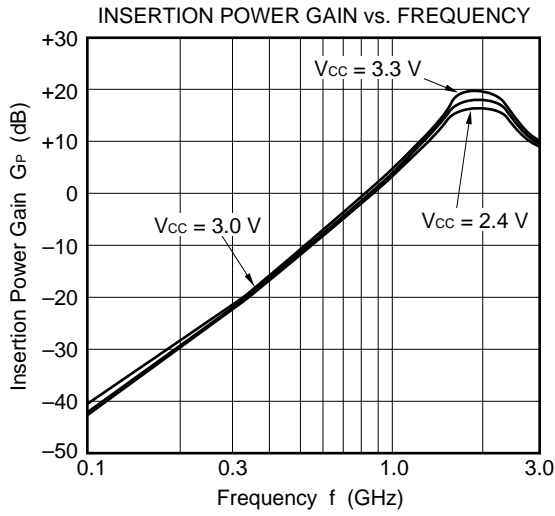


START 0.10000000 GHz  
 STOP 3.10000000 GHz

Discontinued Product

-  $\mu$ PC8152TA -

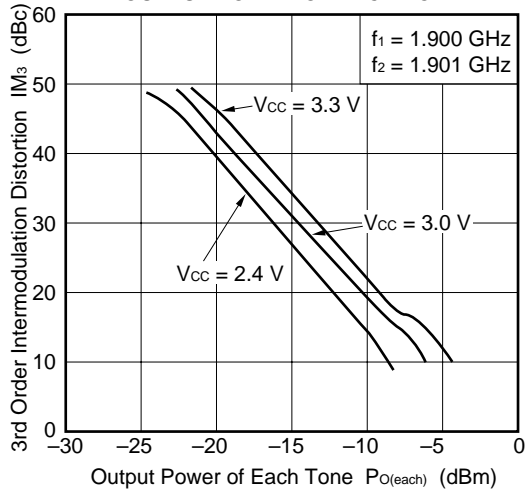
1.90 GHz OUTPUT PORT MATCHING



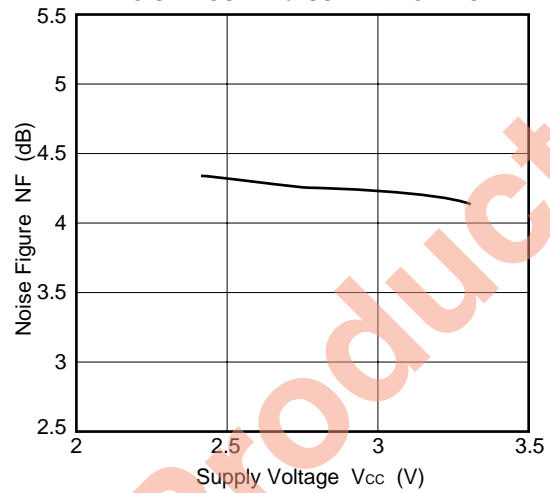
-  $\mu$ PC8152TA -

1.90 GHz OUTPUT PORT MATCHING

3RD ORDER INTERMODULATION DISTORTION vs. OUTPUT POWER OF EACH TONE



NOISE FIGURE vs. SUPPLY VOLTAGE



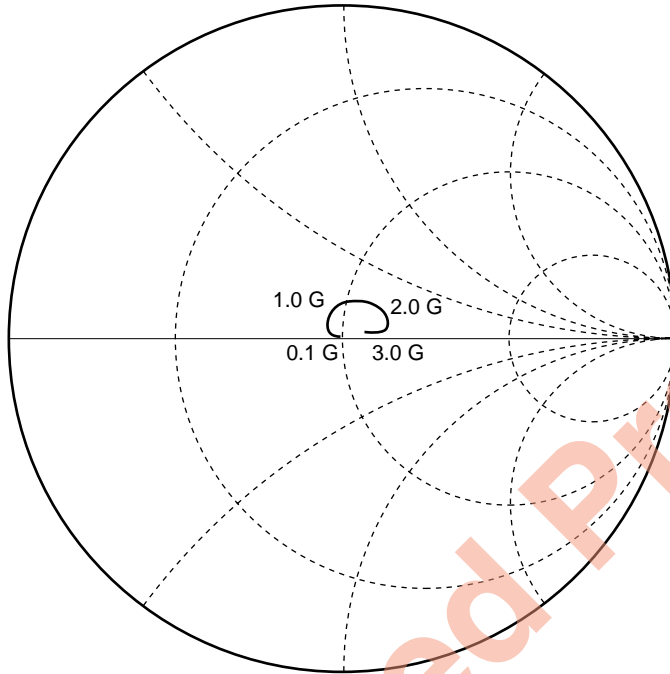
**Remark** The graphs indicate nominal characteristics.

Discontinued Product

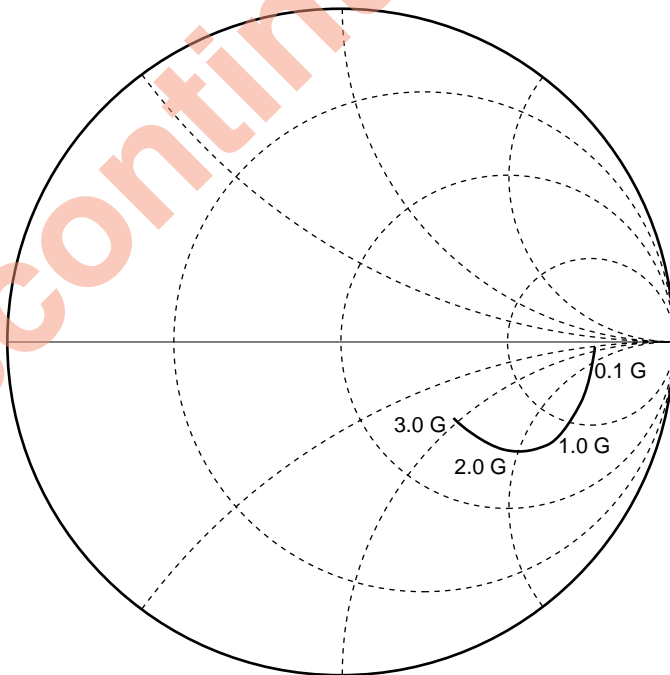
S-PARAMETERS ( $V_{CC} = V_{out} = 3.0\text{ V}$ )

–  $\mu$ PC8152TA –

S<sub>11</sub>-FREQUENCY



S<sub>22</sub>-FREQUENCY



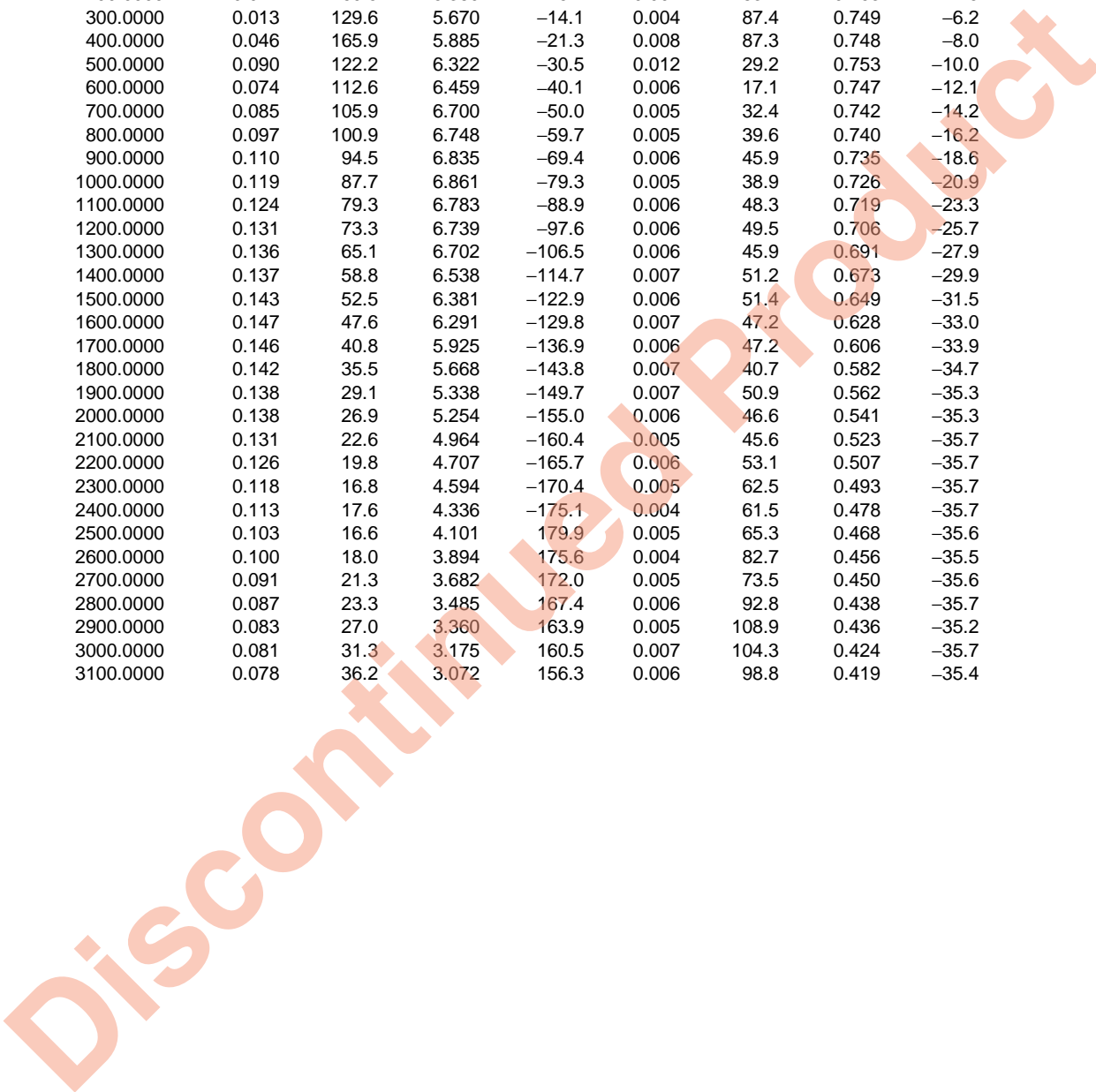
Discontinued Product

TYPICAL S-PARAMETER VALUES (T<sub>A</sub> = +25°C)

$\mu$ PC8152TA

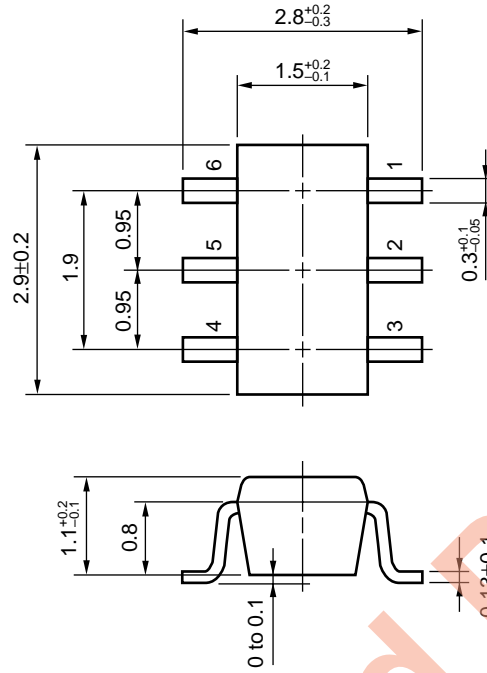
V<sub>CC</sub> = V<sub>out</sub> = 3.0 V, I<sub>CC</sub> = 5.6 mA

FREQUENCY MHz	S <sub>11</sub>		S <sub>21</sub>		S <sub>12</sub>		S <sub>22</sub>	
	MAG.	ANG.	MAG.	ANG.	MAG.	ANG.	MAG.	ANG.
100.0000	0.016	99.3	5.070	-0.3	0.001	86.5	0.763	-2.4
200.0000	0.012	60.5	5.380	-6.7	0.002	83.7	0.763	-4.5
300.0000	0.013	129.6	5.670	-14.1	0.004	87.4	0.749	-6.2
400.0000	0.046	165.9	5.885	-21.3	0.008	87.3	0.748	-8.0
500.0000	0.090	122.2	6.322	-30.5	0.012	29.2	0.753	-10.0
600.0000	0.074	112.6	6.459	-40.1	0.006	17.1	0.747	-12.1
700.0000	0.085	105.9	6.700	-50.0	0.005	32.4	0.742	-14.2
800.0000	0.097	100.9	6.748	-59.7	0.005	39.6	0.740	-16.2
900.0000	0.110	94.5	6.835	-69.4	0.006	45.9	0.735	-18.6
1000.0000	0.119	87.7	6.861	-79.3	0.005	38.9	0.726	-20.9
1100.0000	0.124	79.3	6.783	-88.9	0.006	48.3	0.719	-23.3
1200.0000	0.131	73.3	6.739	-97.6	0.006	49.5	0.706	-25.7
1300.0000	0.136	65.1	6.702	-106.5	0.006	45.9	0.691	-27.9
1400.0000	0.137	58.8	6.538	-114.7	0.007	51.2	0.673	-29.9
1500.0000	0.143	52.5	6.381	-122.9	0.006	51.4	0.649	-31.5
1600.0000	0.147	47.6	6.291	-129.8	0.007	47.2	0.628	-33.0
1700.0000	0.146	40.8	5.925	-136.9	0.006	47.2	0.606	-33.9
1800.0000	0.142	35.5	5.668	-143.8	0.007	40.7	0.582	-34.7
1900.0000	0.138	29.1	5.338	-149.7	0.007	50.9	0.562	-35.3
2000.0000	0.138	26.9	5.254	-155.0	0.006	46.6	0.541	-35.3
2100.0000	0.131	22.6	4.964	-160.4	0.005	45.6	0.523	-35.7
2200.0000	0.126	19.8	4.707	-165.7	0.006	53.1	0.507	-35.7
2300.0000	0.118	16.8	4.594	-170.4	0.005	62.5	0.493	-35.7
2400.0000	0.113	17.6	4.336	-175.1	0.004	61.5	0.478	-35.7
2500.0000	0.103	16.6	4.101	-179.9	0.005	65.3	0.468	-35.6
2600.0000	0.100	18.0	3.894	-175.6	0.004	82.7	0.456	-35.5
2700.0000	0.091	21.3	3.682	-172.0	0.005	73.5	0.450	-35.6
2800.0000	0.087	23.3	3.485	-167.4	0.006	92.8	0.438	-35.7
2900.0000	0.083	27.0	3.360	-163.9	0.005	108.9	0.436	-35.2
3000.0000	0.081	31.3	3.175	-160.5	0.007	104.3	0.424	-35.7
3100.0000	0.078	36.2	3.072	-156.3	0.006	98.8	0.419	-35.4



★ PACKAGE DIMENSIONS

6-PIN MINIMOLD (UNIT: mm)



Discontinued Product

**NOTES ON CORRECT USE**

- (1) Observe precautions for handling because of electro-static sensitive devices.
- (2) Form a ground pattern as wide as possible to minimize ground impedance (to prevent undesired oscillation). All the ground pins must be connected together with wide ground pattern to decrease impedance difference.
- (3) The bypass capacitor should be attached to Vcc line.
- (4) The inductor (L) should be attached between output and Vcc pins. The L and series capacitor (C2) values should be adjusted for applied frequency to match impedance to next stage.
- (5) The DC capacitor must be attached to input pin.

**RECOMMENDED SOLDERING CONDITIONS**

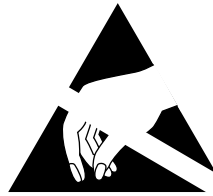
This product should be soldered under the following recommended conditions. For soldering methods and conditions other than those recommended below, contact your NEC sales representative.

Soldering Method	Soldering Conditions	Recommended Condition Symbol
Infrared Reflow	Package peak temperature: 235°C or below Time: 30 seconds or less (at 210°C) Count: 3, Exposure limit: None <sup>Note</sup>	IR35-00-3
VPS	Package peak temperature: 215°C or below Time: 40 seconds or less (at 200°C) Count: 3, Exposure limit: None <sup>Note</sup>	VP15-00-3
Wave Soldering	Soldering bath temperature: 260°C or below Time: 10 seconds or less Count: 1, Exposure limit: None <sup>Note</sup>	WS60-00-1
Partial Heating	Pin temperature: 300°C Time: 3 seconds or less (per side of device) Exposure limit: None <sup>Note</sup>	—

**Note** After opening the dry pack, keep it in a place below 25°C and 65% RH for the allowable storage period.

**Caution** Do not use different soldering methods together (except for partial heating).

For details of recommended soldering conditions for surface mounting, refer to information document **SEMICONDUCTOR DEVICE MOUNTING TECHNOLOGY MANUAL (C10535E)**.



## ATTENTION

OBSERVE PRECAUTIONS  
FOR HANDLING  
ELECTROSTATIC  
SENSITIVE  
DEVICES

NESAT (NEC Silicon Advanced Technology) is a trademark of NEC Corporation.

- The information in this document is current as of August, 2000. The information is subject to change without notice. For actual design-in, refer to the latest publications of NEC's data sheets or data books, etc., for the most up-to-date specifications of NEC semiconductor products. Not all products and/or types are available in every country. Please check with an NEC sales representative for availability and additional information.
  - No part of this document may be copied or reproduced in any form or by any means without prior written consent of NEC. NEC assumes no responsibility for any errors that may appear in this document.
  - NEC does not assume any liability for infringement of patents, copyrights or other intellectual property rights of third parties by or arising from the use of NEC semiconductor products listed in this document or any other liability arising from the use of such products. No license, express, implied or otherwise, is granted under any patents, copyrights or other intellectual property rights of NEC or others.
  - Descriptions of circuits, software and other related information in this document are provided for illustrative purposes in semiconductor product operation and application examples. The incorporation of these circuits, software and information in the design of customer's equipment shall be done under the full responsibility of customer. NEC assumes no responsibility for any losses incurred by customers or third parties arising from the use of these circuits, software and information.
  - While NEC endeavours to enhance the quality, reliability and safety of NEC semiconductor products, customers agree and acknowledge that the possibility of defects thereof cannot be eliminated entirely. To minimize risks of damage to property or injury (including death) to persons arising from defects in NEC semiconductor products, customers must incorporate sufficient safety measures in their design, such as redundancy, fire-containment, and anti-failure features.
  - NEC semiconductor products are classified into the following three quality grades: "Standard", "Special" and "Specific". The "Specific" quality grade applies only to semiconductor products developed based on a customer-designated "quality assurance program" for a specific application. The recommended applications of a semiconductor product depend on its quality grade, as indicated below. Customers must check the quality grade of each semiconductor product before using it in a particular application.
    - "Standard": Computers, office equipment, communications equipment, test and measurement equipment, audio and visual equipment, home electronic appliances, machine tools, personal electronic equipment and industrial robots
    - "Special": Transportation equipment (automobiles, trains, ships, etc.), traffic control systems, anti-disaster systems, anti-crime systems, safety equipment and medical equipment (not specifically designed for life support)
    - "Specific": Aircraft, aerospace equipment, submersible repeaters, nuclear reactor control systems, life support systems and medical equipment for life support, etc.
- The quality grade of NEC semiconductor products is "Standard" unless otherwise expressly specified in NEC's data sheets or data books, etc. If customers wish to use NEC semiconductor products in applications not intended by NEC, they must contact an NEC sales representative in advance to determine NEC's willingness to support a given application.

(Note)

- (1) "NEC" as used in this statement means NEC Corporation and also includes its majority-owned subsidiaries.
- (2) "NEC semiconductor products" means any semiconductor product developed or manufactured by or for NEC (as defined above).