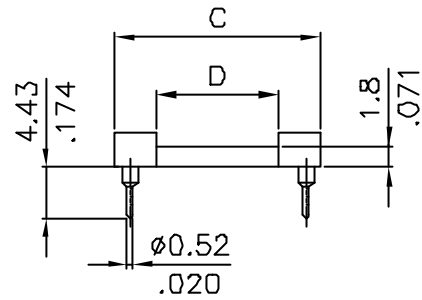
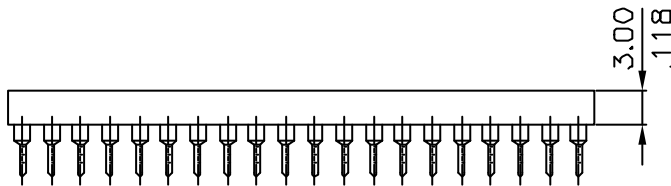
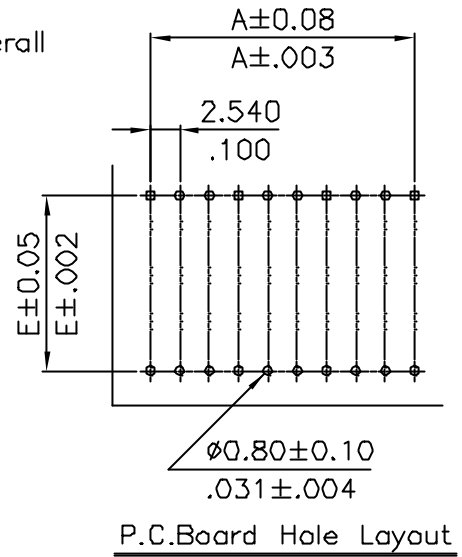
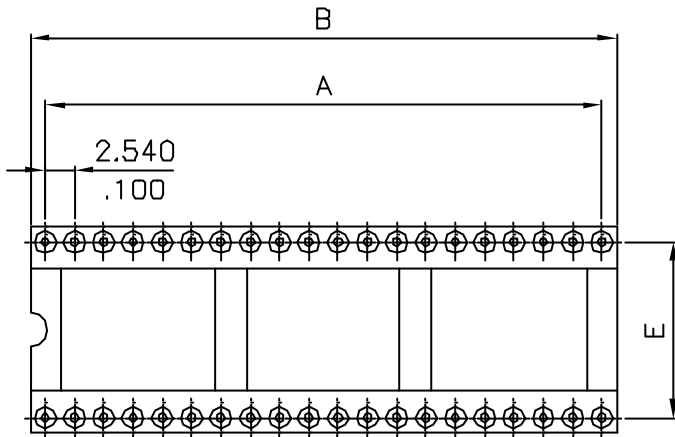


Material :
 Insulator: PBT UL94V-0, Color: Black
 Inner contact: Beryllium Copper
 Outer sleeve: Brass
 Plating:
 Inner contact: 10?" gold over 30~50?" nickel overall
 Outer sleeve: Tin Plated 120?" over 30~50?" nickel overall



Circuits	A±0.08	B±0.20	C±0.20	D±0.20	E±0.05
6	5.080(.200)	7.6(.299)	10.14(.399)	4.4(.173)	7.620(.300)
8	7.620(.300)	10.2(.402)	10.14(.399)	4.4(.173)	7.620(.300)
10	10.160(.400)	12.7(.500)	10.14(.399)	4.4(.173)	7.620(.300)
14	15.240(.600)	17.8(.701)	10.14(.399)	4.4(.173)	7.620(.300)
16	17.780(.700)	20.3(.799)	10.14(.399)	4.4(.173)	7.620(.300)
18	20.320(.800)	22.8(.898)	10.14(.399)	4.4(.173)	7.620(.300)
20	22.860(.900)	25.4(1.000)	10.14(.399)	4.4(.173)	7.620(.300)
24	27.940(1.100)	30.5(1.201)	17.76(.697)	10.5(.413)	15.240(.600)
28	33.020(1.300)	35.5(1.398)	17.76(.697)	10.5(.413)	15.240(.600)
32	38.100(1.500)	40.6(1.598)	17.76(.697)	10.5(.413)	15.240(.600)
40	48.260(1.900)	50.8(2.000)	17.76(.697)	10.5(.413)	15.240(.600)

				LECO CORPORATION	APPROVED BY:	PART NO.: 8320-**X0C0					
				GENERAL TOLERANCE	CHECKED BY:	TITLE: IC SOCKET					
				X. ±	X' ± 2'	DRAWING NO.: 832009S					
				.X ± $\frac{0.30}{.012}$.X' ±	DRAW BY: Angela 4/13/98				
A	DWG REL.			.XX ± $\frac{0.20}{.008}$.XX' ±		UNITS	SCALE	SIZE	SHEET	REV.
REV.	ECO. NO.	CHG	APPD.	.XXX ± $\frac{0.10}{.004}$.XXX' ±		mm	3/2	A4	1/1	A