

Broadband DC Block



RLC Electronics' Broadband DC Block provides excellent performance over the frequency range of .005 to 40 GHz. This unit is used to

block DC current or voltage from an RF circuit without affecting the flow of RF through the main transmission path.

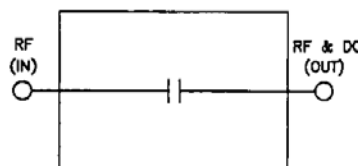
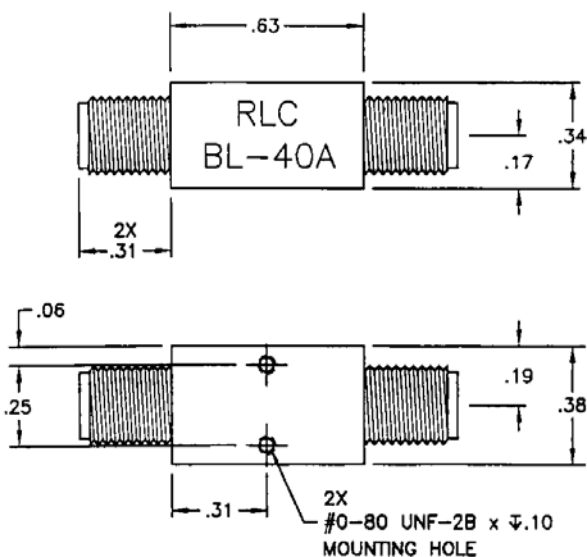
Specifications

Model No.	Frequency Range	Insertion Loss (dB) (Max.)	VSWR Max.
BL — 40A	.005-12 GHz	1.0	1.5:1
	12-40 GHz	2.0	2.0:1

Impedance: 50 ohms
RF Power: 5 watts average
RF Connector: 'K' (female)

Voltage: 16 vdc max.
Environment: MIL-E-5400, Class 1A EXCEPT operating temperature -55 C to +85 C

Outline



Schematic

Specifications subject to change without notification.

Tolerances unless otherwise specified are: .xx ±.02, .xxx ±.005

Specials requiring closer tolerances, different frequency ranges, special connectors different materials, finishes, etc. can be furnished upon request.



RLC ELECTRONICS, INC.

83 Radio Circle, Mount Kisco, New York 10549 Telephone 914-241-1334 Fax 914-241-1753
 e-mail: sales@rlcelectronics.com www.rlcelectronics.com