

# NKK® SERIES PW ROCKER SWITCHES

## MINIATURE/HEAVY DUTY/SNAP-IN MOUNT

### GENERAL SPECIFICATIONS

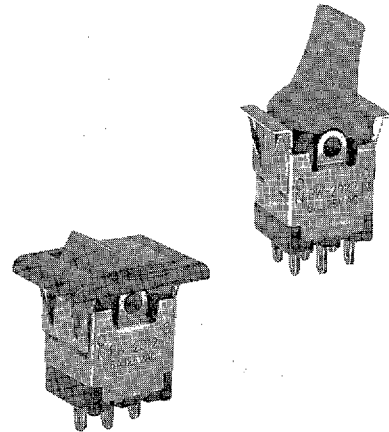
<b>Electrical Capacity: (Resistive Load)</b>	5A @ 125V AC 6A @ 125V AC for ON-NONE-ON models
<b>Contact Resistance:</b>	10 milliohms maximum
<b>Insulation Resistance:</b>	200 megohms minimum @ 500V DC
<b>Dielectric Strength:</b>	1,000V AC minimum
<b>Mechanical Life:</b>	30,000 operations minimum
<b>Electrical Life:</b>	10,000 operations minimum
<b>Ambient Temp Range:</b>	-10°C through +70°C (+14°F through +158°F)
<b>Angle of Throw:</b>	26°

### MATERIALS & FINISHES

Frame	Stainless Steel
Dust Cover	Fiberglass reinforced polyamide
Base	Phenolic resin
Movable Contactor	Phosphor bronze with silver plating or copper with silver plating
Movable Contacts	Silver alloy
Stationary Contacts	Silver alloy
Terminals	Copper with silver plating

### APPLICATIONS

Snap-in rockers and paddles have the same durable, rugged construction found in the other S series devices with the convenience of snap-in mounting. The stainless steel frame resists corrosion and provides for secure mounting over a wide range of panel thicknesses. This device carries a healthy 5 amp rating yet has a compact case with a behind panel depth of less than .850". Typical applications for these miniature rockers are found in test, aircraft and medical instruments; as well as, industrial machines and equipment.



Series PW rockers are available in single or double pole models with a variety of momentary or maintained circuit options. Securely staked solder lug terminals eliminate the need for epoxy seal, and a longer center solder lug terminal makes wiring easier. Users may select from two styles of paddles or a rocker in seven colors. To enhance front panel appearance, an optional bezel is offered or bezels with LED illumination are available.

### ACTUAL SIZE



### UL & CSA

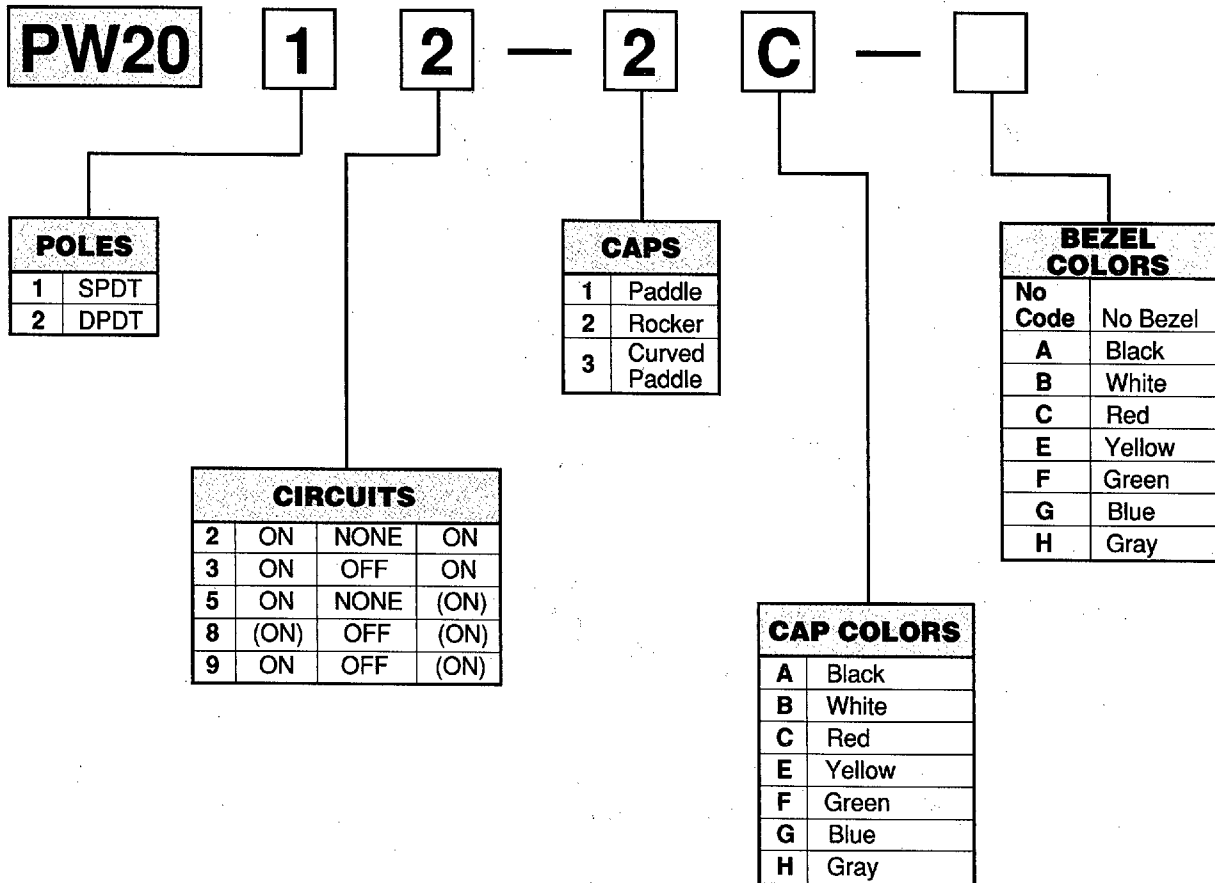
All models are recognized by Underwriters Laboratories Inc. for 5A @ 125V AC or 6A @ 125V AC for ON-NONE-ON models.  
UL File No. E44145

All single pole models and some double pole models are certified by Canadian Standards Association: single pole models & PW2025 & PW2029 for 5A @ 125V AC & PW2022 for 6A @ 125V AC.  
CSA File Nos. LR23535 and LR56017.

# NKK® SERIES PW ROCKER SWITCHES

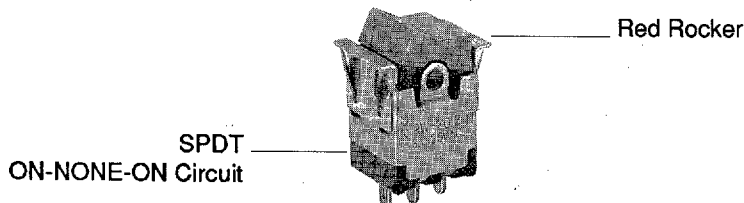
MINIATURE/HEAVY DUTY/SNAP-IN MOUNT

## TYPICAL SWITCH ORDERING EXAMPLE



### DESCRIPTION FOR TYPICAL ORDERING EXAMPLE (PW2012-2C):

SERIES PW ROCKER




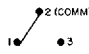
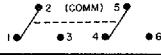


**IMPORTANT:** Switches are supplied without UL & CSA marking unless specified. See Supplement for instructions.

# NHK® SERIES PW ROCKER SWITCHES

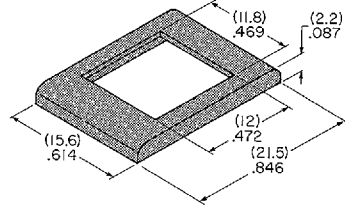
## MINIATURE/HEAVY DUTY/SNAP-IN MOUNT

Rockers

POLES & CIRCUITS				
POLE & THROW	MODEL	ROCKER POSITION & TERMINAL NUMBERS		
		Down 	Center 	Up 
SPDT	PW2012	ON	NONE	ON
	PW2013	ON	OFF	ON
	PW2015	ON	NONE	(ON)
	PW2018 PW2019	(ON) ON	OFF OFF	(ON) (ON)
CONNECTED TERMINALS		2-3	OPEN	2-1
SCHEMATIC 				
DPDT	PW2022	ON	NONE	ON
	PW2023	ON	OFF	ON
	PW2025	ON	NONE	(ON)
	PW2028	(ON)	OFF	(ON)
	PW2029	ON	OFF	(ON)
CONNECTED TERMINALS		2-3 5-6	OPEN	2-1 5-4
SCHEMATIC 				
Terminal numbers are not actually on the switch.				

### OPTIONAL BEZEL & BEZEL COLORS

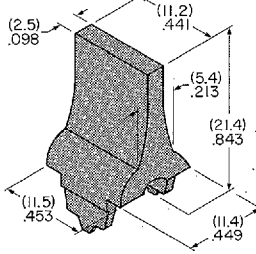
<b>A</b> Black	AT207 Bezel
<b>B</b> White	Polycarbonate
<b>C</b> Red	
<b>E</b> Yellow	
<b>F</b> Green	
<b>G</b> Blue	
<b>H</b> Gray	



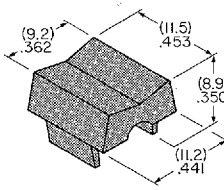
Standard finish is glossy.  
For matte finish, contact factory.

### CAP & CAP COLORS

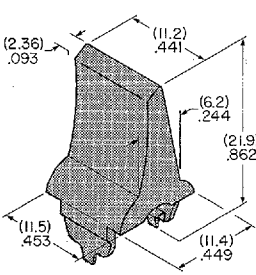
**1 AT436 Paddle**  
Polycarbonate



**2 AT437 Rocker**  
Polycarbonate

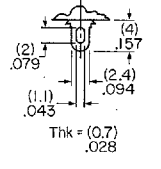


**3 AT458 Curved Paddle**  
Polycarbonate



Colors Available:  
**A** Black   **B** White   **C** Red  
**E** Yellow   **F** Green   **G** Blue   **H** Gray  
 Standard finish is glossy.  
 For matte finish, contact factory.

### TERMINALS

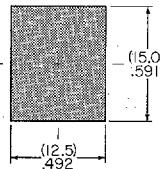


### SOLDERING & WIRING

**Soldering Limits:**  
 3 seconds @ 350°C  
 5 seconds @ 270°C

**Wiring:**  
 Solder lug terminals have .043" X .079" oblong holes which accommodate 1 solid 18-gauge wire or 2 solid or stranded 20-gauge wires.

### PANEL CUTOUT & PANEL THICKNESS

PANEL CUTOUT	PANEL THICKNESS
Single & Double Pole 	Without Bezel: 1mm ~ 3.2mm (.039" ~ .126")
	With Bezel: 1mm ~ 2.5mm (.039" ~ .098")

### OPTIONAL BEZELS WITH LEDs

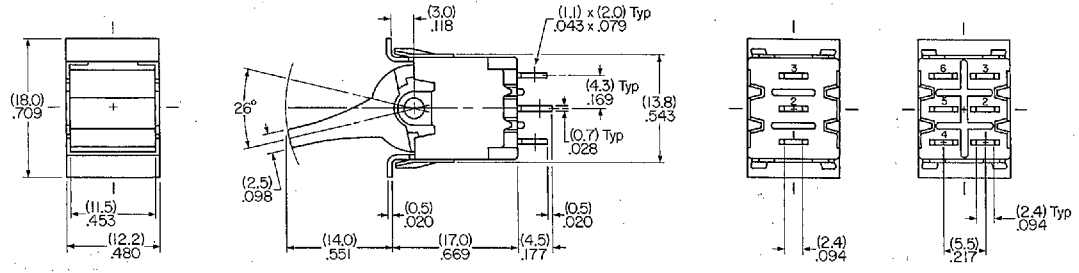
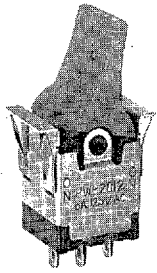
Several bezels with LEDs, AT208, AT212 and AT213 are available for use with PW rockers. Dimension drawings, panel cutouts, LED color codes and LED lamp specifications appear in Series E Snap-in Pushbutton Section (EB). Bezel assembly instructions may be found in Series M Snap-in Rocker Section. When ordering, specify both the bezel AT number and the LED color code.

# NKK® SERIES PW ROCKER SWITCHES

## MINIATURE/HEAVY DUTY/SNAP-IN MOUNT

ROCKERS

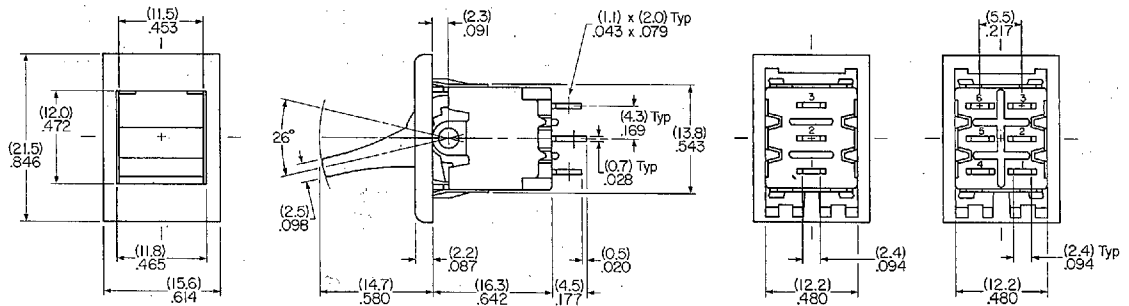
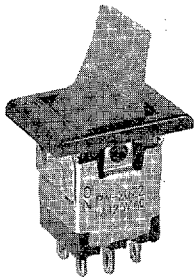
### Paddle without Bezel/Solder Lug/1 & 2 Pole



PW2012-1C Model Shown

Actuator in DOWN position.

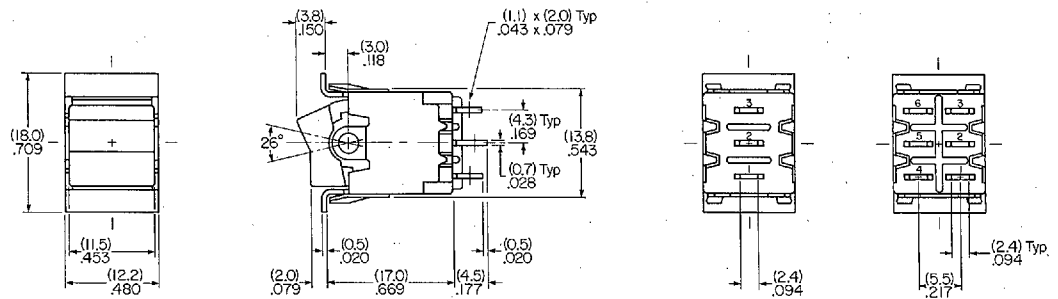
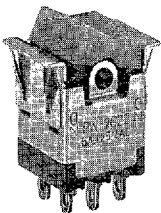
### Paddle with Bezel/Solder Lug/1 & 2 Pole



PW2022-1C-A Model Shown

Actuator in DOWN position.

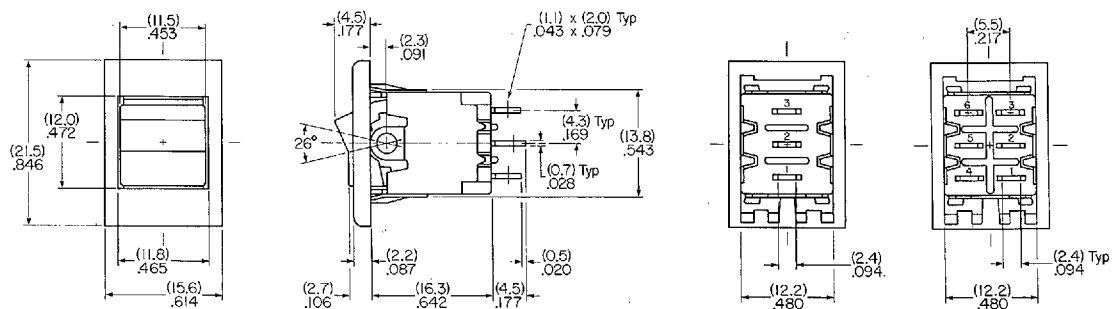
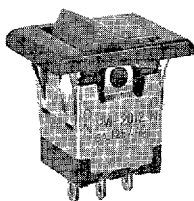
### Rocker without Bezel/Solder Lug/1 & 2 Pole



PW2022-2C Model Shown

Actuator in DOWN position.

### Rocker with Bezel/Solder Lug/1 & 2 Pole



PW2012-2C-A Model Shown

Actuator in DOWN position.