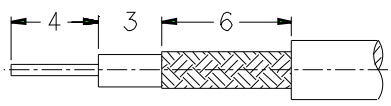


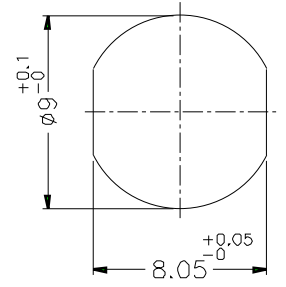
1 2 3 4 5 6 7 8

REVISIONS			
ISS	ZONE	DESCRIPTION\PER REQUEST\DATE	

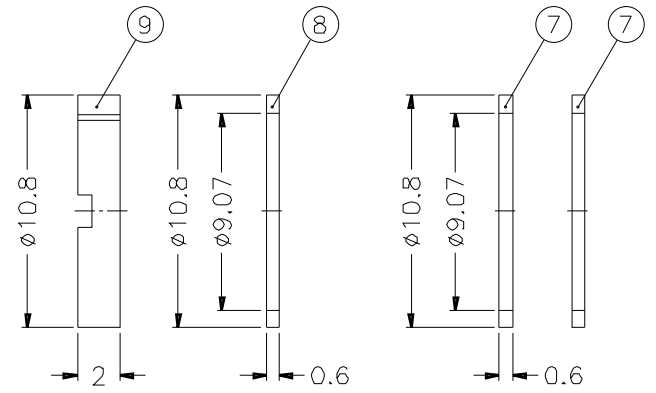
- FERRULE CRIMPING TOOLS P/N  
227-944 (M22520/5.01)  
227-1221-03A (M22520/5.03) HEX: 3.25 L=8.25
- INNER CONTACT CRIMPING TOOL P/N  
413 SP 00 ADJUST TO 5
- CONNECTOR ACCORDING TO NF C 93-570, DIN 47-295, CEI 169-13
- PACKAGING IN BAG WITH COMMERCIAL PART NUMBER AND DATE CODE



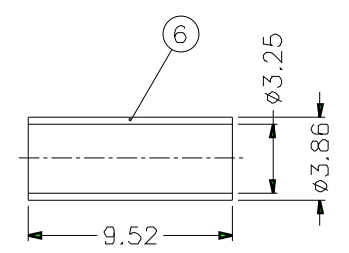
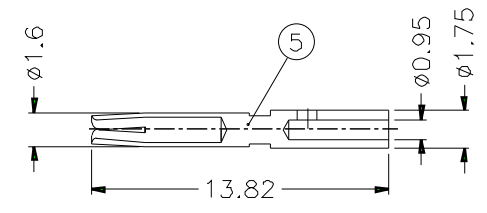
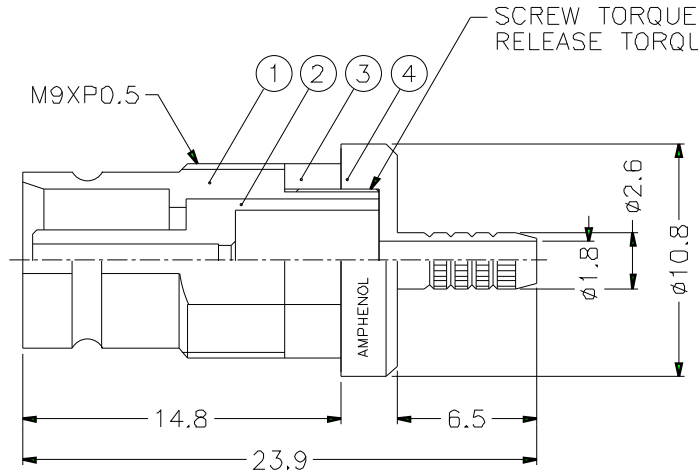
RECOMMENDED  
CABLE STRIPPING DIM'S



RECOMMENDED  
MOUNTING HOLE



- PANEL THICKNESS:
- 1.2mm(GROUNDED OR ISOLATED)
  - 3mm(ONLY GROUNDED, WITHOUT WASHERS  
⑦ AND ⑧ )



- CABLES: - RG 179 B/U  
- RG 187  
- KX 22  
- KX 3  
- L910/22

NO.	DESCRIPTION	MATERIAL	FINISH	Q'TY	DRAWING NO.
9	NUT	BRASS	NICKEL	1	
8	WASHER	BRASS	NICKEL	1	
7	ISOLATING WASHER	EPOXY GLASS -FR4 TYPE	NATURAL	2	
6	FERRULE	COPPER	NICKEL	1	
5	CONTACT PIN	BEUC	GOLD	1	
4	BARREL	BRASS	NICKEL	1	
3	RING	PSU,20% G.F.	GREEN	1	
2	INSULATOR	TEFLON	NATURAL	1	
1	BODY	BRASS	GOLD	1	

DIMENSIONS ARE IN MILLIMETERS				PART NO. 156 931 06	
APPROVED		DATE		10-11-01'	
CHECKED		DATE		10-11-01'	
DRAWN		DATE		10-11-01'	
NO.	DESCRIPTION	MATERIAL	FINISH	Q'TY	DRAWING NO.

<b>Amphenol</b>	
TITLE 1.6/5.6 75Ω BULKHEAD MOUNT JACK	
DRAWING NO.	
ITEM NO.	

1 2 3 4 5 6 7 8